

## Sonata Settima à 4

Johann Rosenmüller (1619-1684)

*Largo*

4



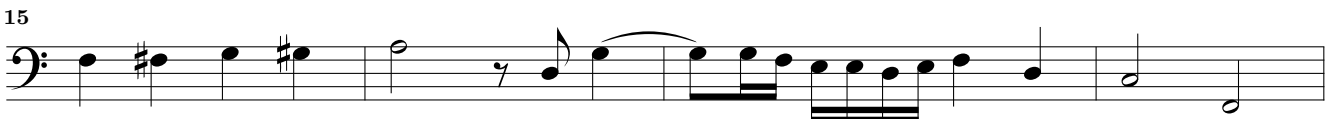
8



11



15



19

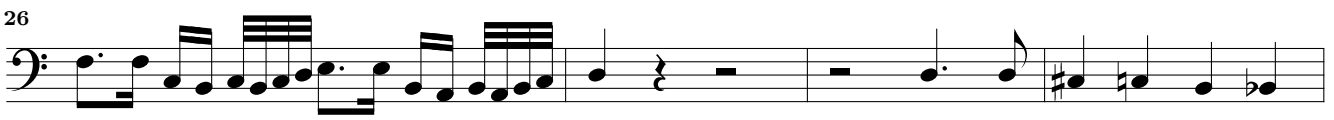
2



23



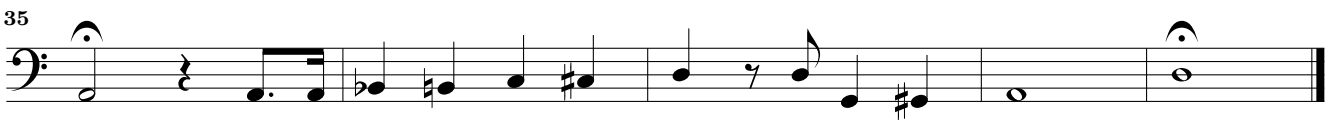
26



30



35

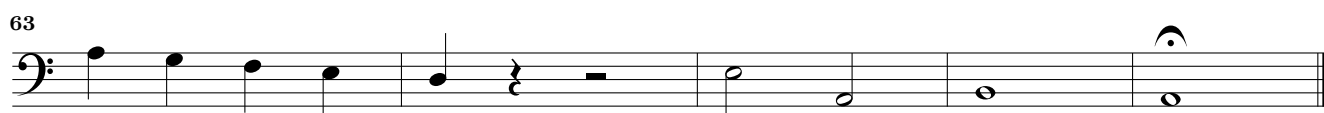
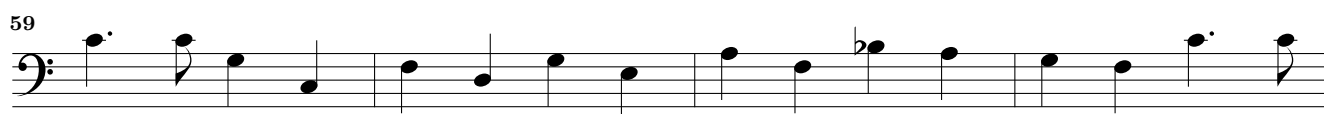
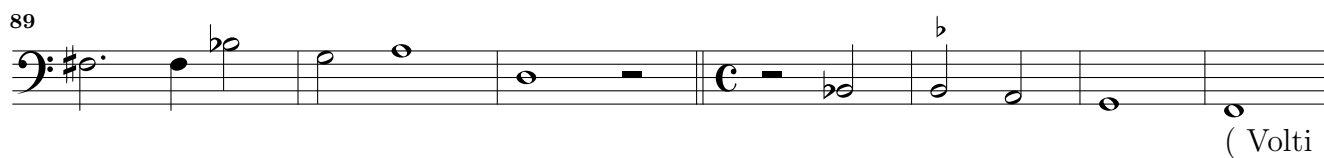
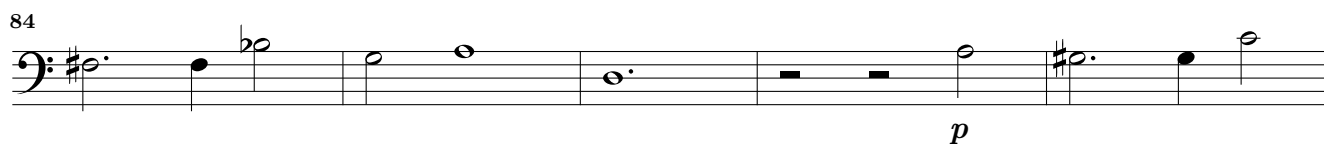
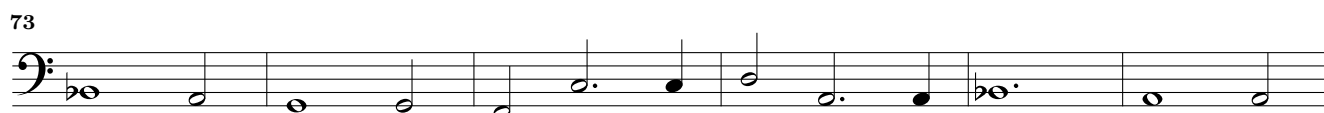
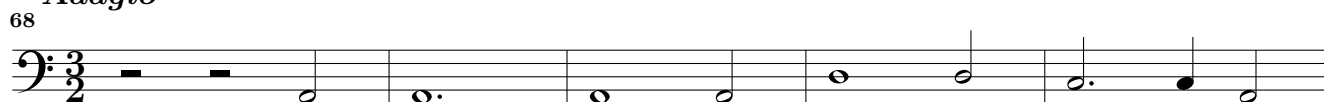
*Adagio*

40



44



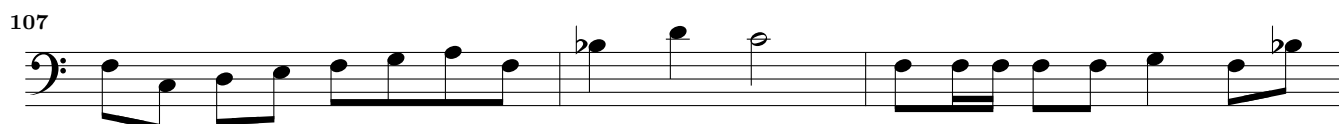
*Prestissimo**Adagio*

*Allegro*

96 

101 

104 

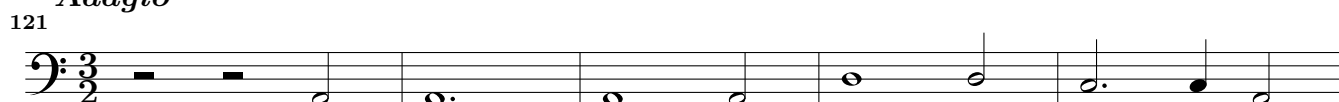
107 

110 

113 

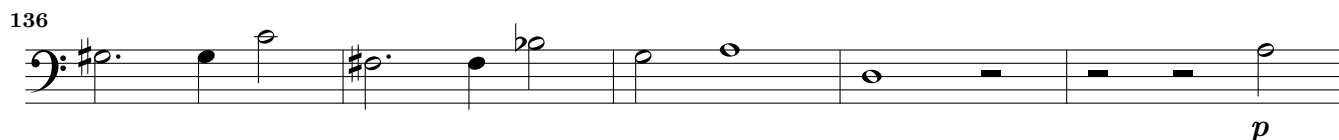
116 

*Adagio*

121 

126 

131 

136 

141 