

Pieces en Trio

Pour les Flutes, Violon, & Dessus de Viole

Paris 1692

Marin Marais

1656 – 1728

Published by Johan Tufvesson.

Non-commercial copying welcome

Revision : 1.11

2^{me} Dessus

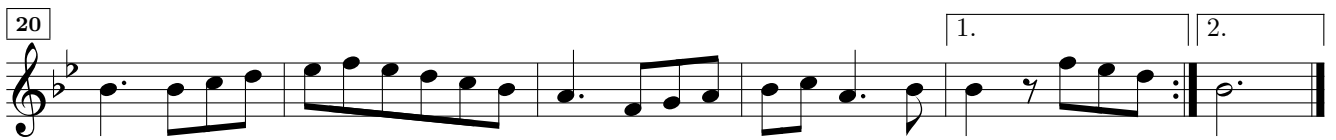
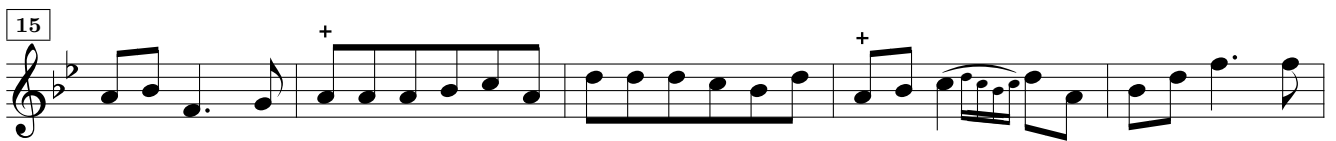
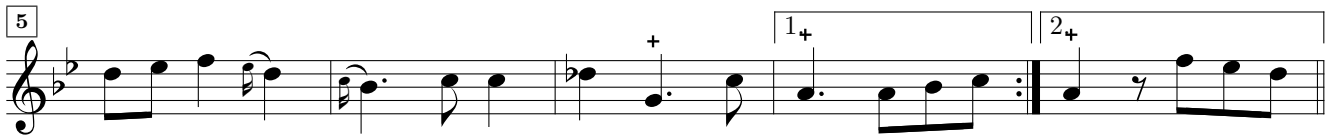
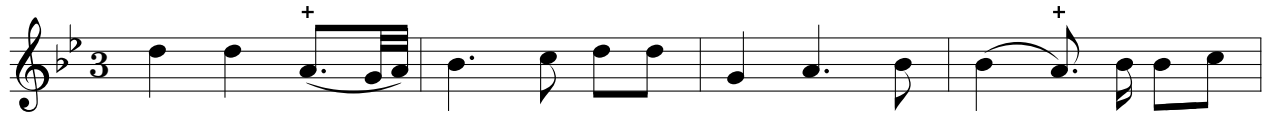
Suite IV

Marin Marais (1656-1728)

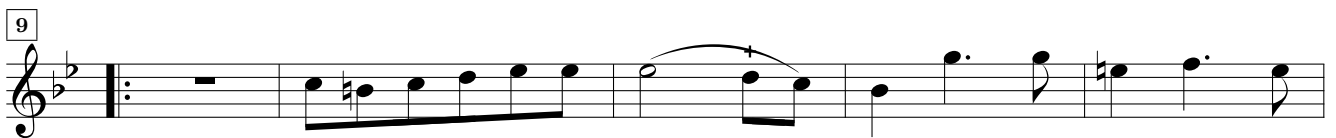
Prelude

The image displays a musical score for the 2nd part of the Prelude from Suite IV by Marin Marais. The score is written in G minor (one flat) and 2/4 time. It consists of nine staves of music, each beginning with a measure number in a box: 5, 9, 14, 18, 22, 26, 29, and 33. The notation includes various rhythmic values such as quarter, eighth, and sixteenth notes, as well as rests and accidentals. Some notes are marked with a '+' sign, likely indicating fingerings. The piece concludes with a double bar line and repeat dots at the end of the 33rd measure.

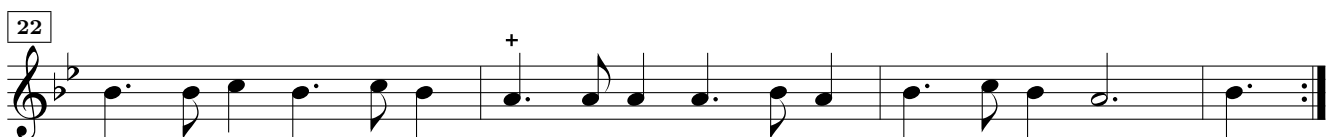
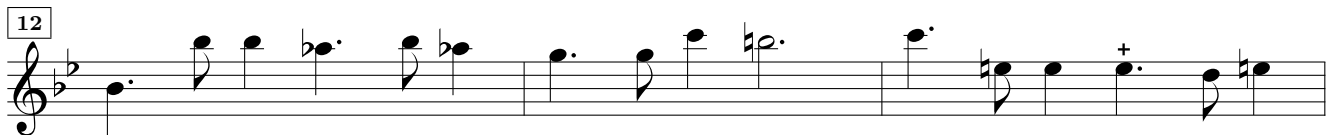
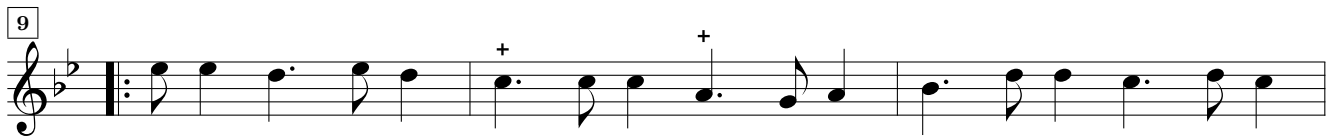
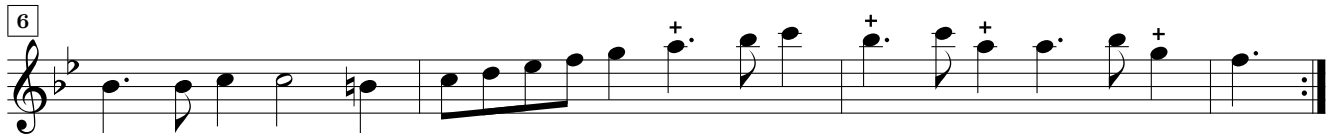
Sarab.^{de}



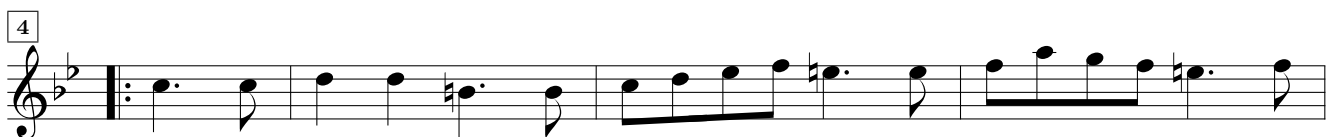
Air



Gigue



Gavotte



Caprice

Musical score for Caprice, measures 1-19. The piece is in 3/8 time and B-flat major. It features a melodic line with various rhythmic patterns, including eighth and sixteenth notes, and rests. Measure 19 ends with a double bar line and repeat dots.

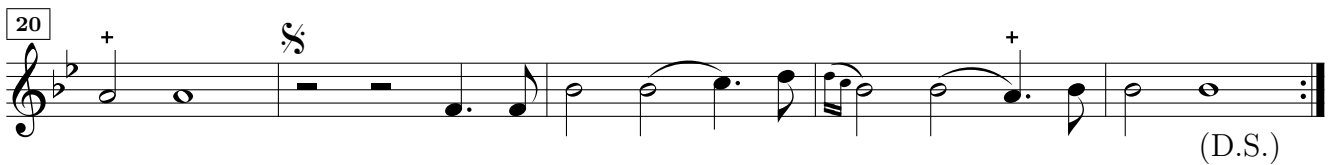
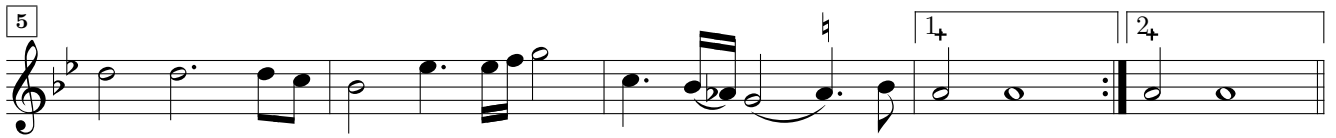
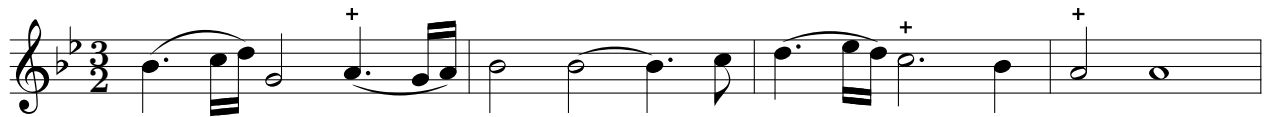
Menuet

Musical score for Menuet, measures 1-14. The piece is in 3/4 time and B-flat major. It features a melodic line with various rhythmic patterns, including quarter and eighth notes, and rests. Measure 14 ends with a double bar line and repeat dots.

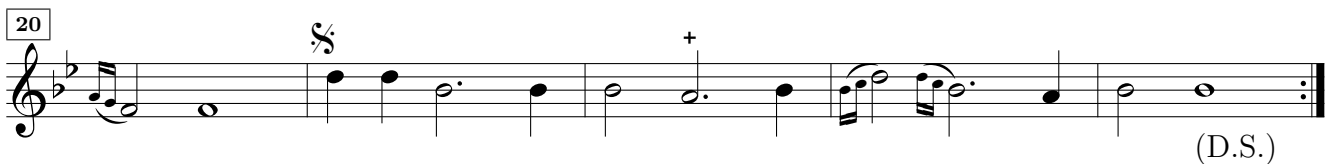
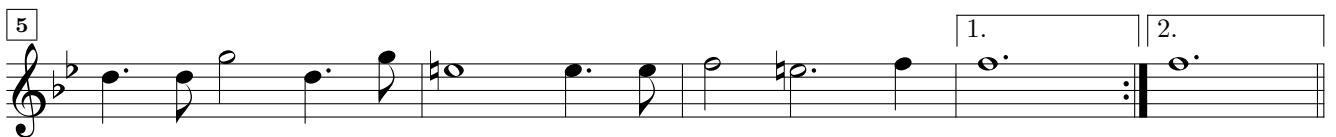
Menuet

Musical score for Menuet, measures 1-13. The piece is in 3/4 time and B-flat major. It features a melodic line with various rhythmic patterns, including quarter and eighth notes, and rests. Measure 13 ends with a double bar line and repeat dots.

La marianne



Autre



Plainte

Pieces en trio — Suite IV

7

