

Musicalische Frühlings-Früchte

In drei- vier- und fünff-stimmiger
Instrumental-Harmonia
mit Basso Continuo

Hamburg 1668

Dietrich Becker
1623 – 1679

Published by Johan Tufvesson.

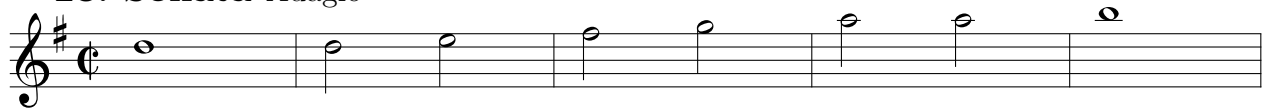
Non-commercial copying welcome

Revision : 1.4

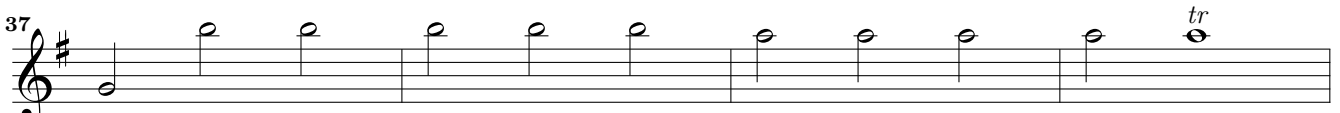
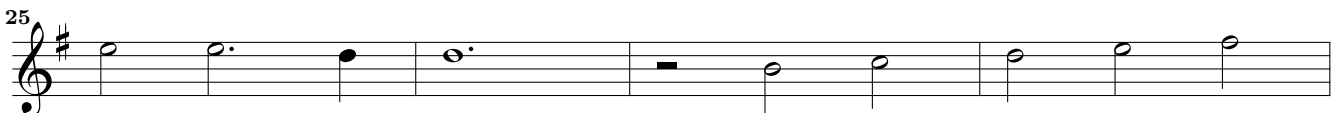
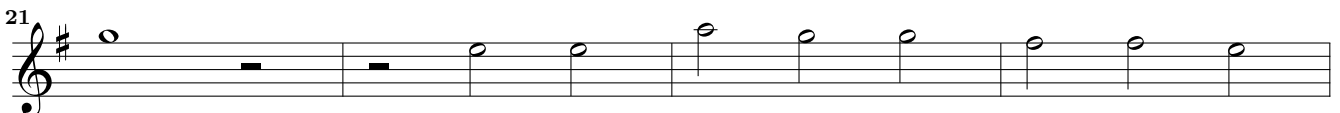
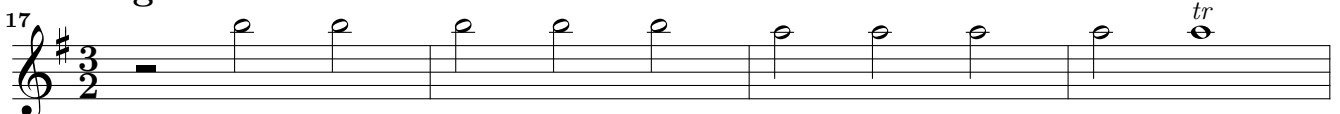
Sonata – Suite à 5

Dietrich Becker (1623?-1679)

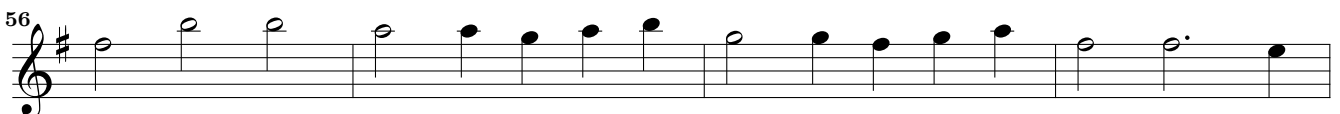
23. Sonata Adagio



Allegro



Adagio



64

68

72 *p*

76

81

86

89

92

95

98

101

105

107

110

113

The image shows a single-staff musical score for Violino I, measures 64 to 113. The key signature is one sharp (F#) and the time signature is common time (C). The score consists of 15 staves of music. Measure 72 is marked with a piano (*p*) dynamic. Measure 81 features a change in time signature to 6/4. Measure 86 features a repeat sign. Measure 113 ends with a double bar line and repeat dots. The notation includes various note values, rests, and slurs.

24. Allmand

4

7

11

14

25. Courant

5

9

15

21

26. Sarband

Musical score for Sarband, measures 1-10. The piece is in 3/4 time and G major. The notation consists of a single melodic line on a treble clef staff. Measure 1 starts with a quarter note G4, followed by quarter notes A4, B4, and C5. Measure 2 has quarter notes D5, C5, B4, and A4. Measure 3 has quarter notes G4, F4, E4, and D4. Measure 4 has quarter notes C4, B3, A3, and G3. Measure 5 has quarter notes F3, E3, D3, and C3. Measure 6 has quarter notes B2, A2, G2, and F2. Measure 7 has quarter notes E2, D2, C2, and B1. Measure 8 has quarter notes A1, G1, F1, and E1. Measure 9 has quarter notes D1, C1, B0, and A0. Measure 10 ends with a quarter note G0 and a double bar line with repeat dots.

27. Gique

Musical score for Gique, measures 1-18. The piece is in 6/4 time and G major. The notation consists of a single melodic line on a treble clef staff. Measure 1 starts with a half note G4, followed by half notes A4, B4, and C5. Measure 2 has half notes D5, C5, B4, and A4. Measure 3 has half notes G4, F4, E4, and D4. Measure 4 has half notes C4, B3, A3, and G3. Measure 5 has half notes F3, E3, D3, and C3. Measure 6 has half notes B2, A2, G2, and F2. Measure 7 has half notes E2, D2, C2, and B1. Measure 8 has half notes A1, G1, F1, and E1. Measure 9 has half notes D1, C1, B0, and A0. Measure 10 has half notes G0, F0, E0, and D0. Measure 11 has half notes C0, B0, A0, and G0. Measure 12 has half notes F0, E0, D0, and C0. Measure 13 has half notes B0, A0, G0, and F0. Measure 14 has half notes E0, D0, C0, and B0. Measure 15 has half notes A0, G0, F0, and E0. Measure 16 has half notes D0, C0, B0, and A0. Measure 17 has half notes G0, F0, E0, and D0. Measure 18 ends with a half note C0 and a double bar line with repeat dots.