

PADUANEN,
Alemanden, Couranten,
Balletten, Sarabanden

Mit drei Stimmen und Basso pro Organo

Leipzig 1645

Johann Rosenmüller
1619 – 1684

Published by Johan Tufvesson.

Non-commercial copying welcome

Revision : 1.1

Paduanen, Alemanden, Couranten, Balletten, Sarabanden

Johann Rosenmüller (1619–1684)

1. Paduana

5

9

13

17

20

23

26

29

32

35

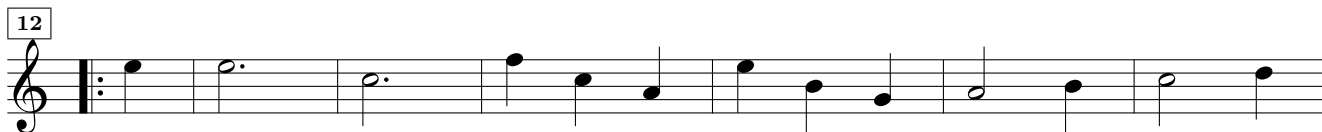
38

41

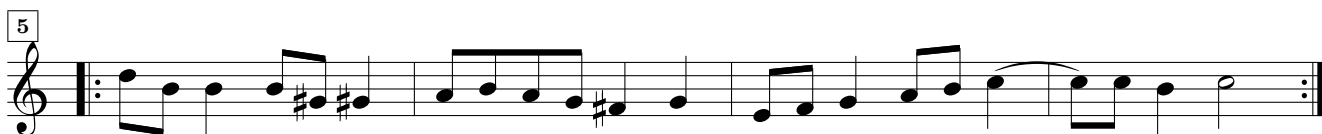
2. Alemanda



3. Courant



4. Ballet



5. Sarabanda



6. Paduana

The musical score for '6. Paduana' is presented in a single staff with a treble clef and a common time signature (C). The piece consists of 45 measures, divided into 11 systems of five measures each. The notation includes various rhythmic values such as quarter, eighth, and sixteenth notes, as well as rests and accidentals. The key signature is one sharp (F#), and the time signature is common time. The score begins with a repeat sign at measure 13 and ends with a double bar line and repeat sign at measure 45.

10. Sarabanda

Musical score for Sarabanda, 3/4 time signature. The score consists of three staves of music. The first staff starts with a treble clef and a 3/4 time signature. The second staff has a measure number '6' in a box at the beginning. The third staff has a measure number '11' in a box at the beginning. The piece ends with a double bar line and repeat dots.

11. Paduana

Musical score for Paduana, common time signature. The score consists of ten staves of music. The first staff starts with a treble clef and a common time signature. The second staff has a measure number '5' in a box at the beginning. The third staff has a measure number '9' in a box at the beginning. The fourth staff has a measure number '13' in a box at the beginning. The fifth staff has a measure number '17' in a box at the beginning. The sixth staff has a measure number '21' in a box at the beginning. The seventh staff has a measure number '27' in a box at the beginning. The eighth staff has a measure number '31' in a box at the beginning. The ninth staff has a measure number '34' in a box at the beginning. The tenth staff has a measure number '37' in a box at the beginning. The eleventh staff has a measure number '41' in a box at the beginning. The twelfth staff has a measure number '43' in a box at the beginning. The piece ends with a double bar line and repeat dots.

12. Alemanda

Musical score for 12. Alemanda, consisting of three staves of music in G major and common time. The first staff contains the initial melody. The second staff begins at measure 4 and includes a repeat sign. The third staff begins at measure 13 and also includes a repeat sign.

13. Courant

Musical score for 13. Courant, consisting of three staves of music in G major and 3/4 time. The first staff contains the initial melody. The second staff begins at measure 4 and includes a repeat sign. The third staff begins at measure 14 and also includes a repeat sign.

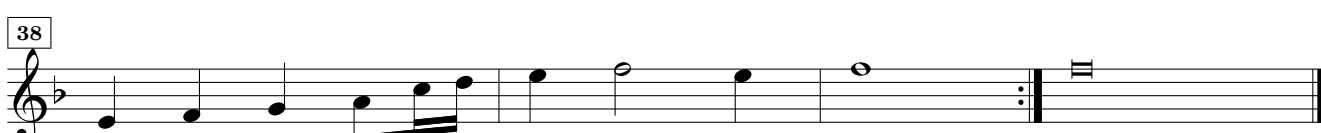
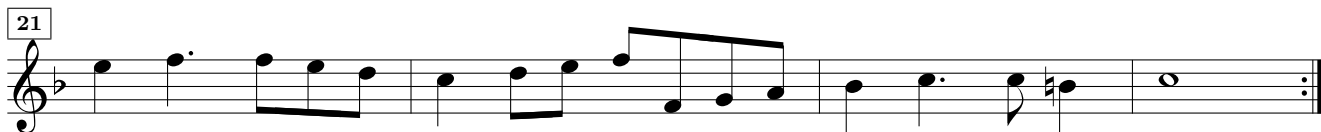
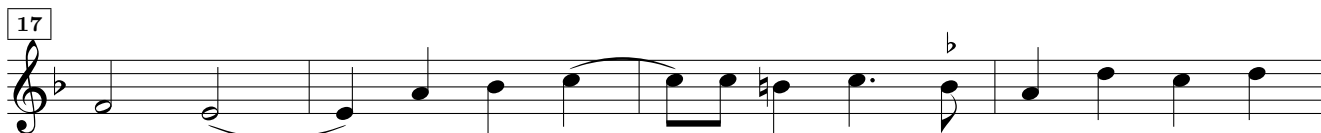
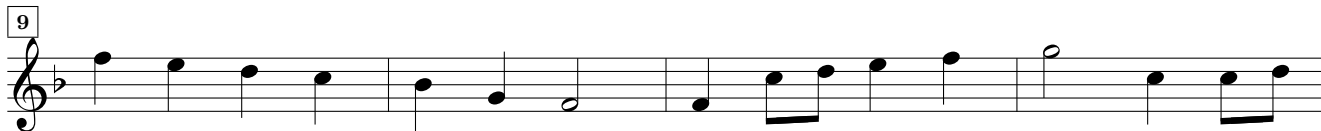
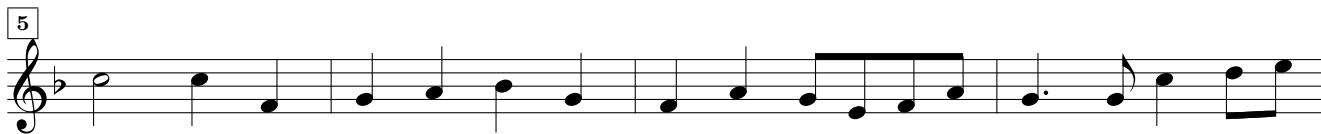
14. Ballet

Musical score for 14. Ballet, consisting of two staves of music in G major and common time. The first staff contains the initial melody. The second staff begins at measure 5 and includes a repeat sign.

15. Sarabanda

Musical score for 15. Sarabanda, consisting of three staves of music in G major and common time. The first staff contains the initial melody. The second staff begins at measure 6 and includes a repeat sign. The third staff begins at measure 12 and also includes a repeat sign.

16. Paduana



17. Alemanda

Musical score for 17. Alemanda, consisting of four staves of music in G minor and common time. The first staff begins with a treble clef, a key signature of one flat, and a common time signature. The melody consists of quarter and eighth notes. The second staff starts at measure 4, the third at measure 7, and the fourth at measure 11. Each staff concludes with a double bar line and repeat dots.

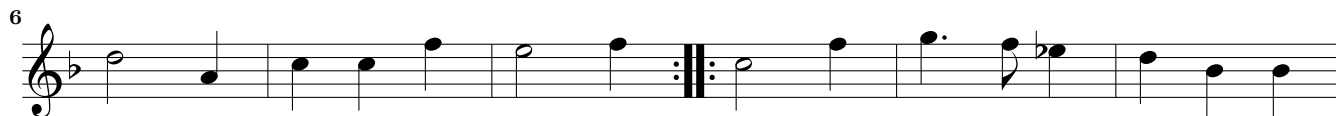
18. Courant

Musical score for 18. Courant, consisting of four staves of music in G minor and 3/4 time. The first staff begins with a treble clef, a key signature of one flat, and a 3/4 time signature. The melody features a mix of quarter, eighth, and sixteenth notes. The second staff starts at measure 7, the third at measure 14, and the fourth at measure 19. Each staff concludes with a double bar line and repeat dots.

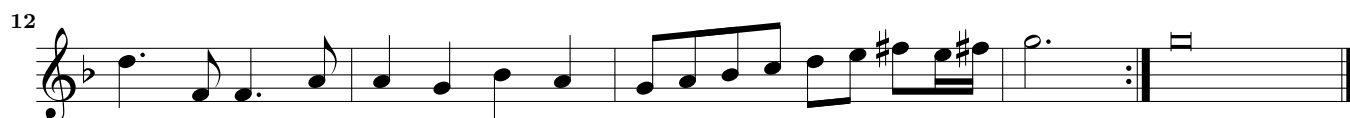
19. Ballet

Musical score for 19. Ballet, consisting of four staves of music in G minor and common time. The first staff begins with a treble clef, a key signature of one flat, and a common time signature. The melody consists of quarter and eighth notes. The second staff starts at measure 4, the third at measure 6, and the fourth at measure 10. Each staff concludes with a double bar line and repeat dots.

20. Sarabanda



21. Alemanda



22. Alemanda



23. Alemanda

4

7

11

24. Alemanda

4

7

11

14

25. Alemanda

4

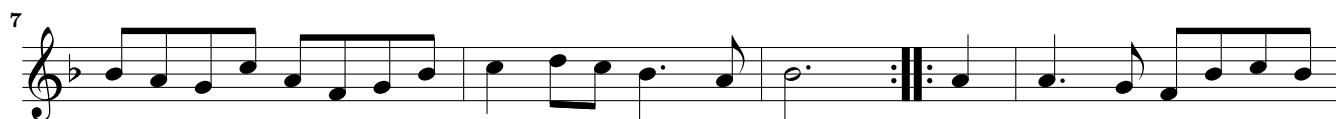
8

11

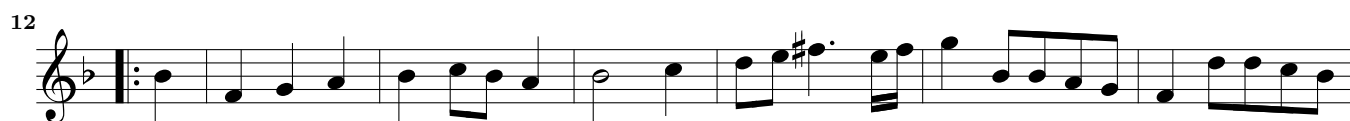
26. Courant



27. Alemanda



28. Courant



29. Alemanda

4

8

12

30. Courant

6

13

19

31. Alemanda

5

10

14

32. Alemanda

Musical score for 32. Alemanda, consisting of four staves of music in treble clef and common time. The first staff starts at measure 1. The second staff starts at measure 5. The third staff starts at measure 8. The fourth staff starts at measure 13. The piece concludes with a double bar line and repeat sign.

33. Alemanda

Musical score for 33. Alemanda, consisting of four staves of music in treble clef and common time. The first staff starts at measure 1. The second staff starts at measure 4. The third staff starts at measure 8. The fourth staff starts at measure 11. The piece concludes with a double bar line and repeat sign.

34. Courant

Musical score for 34. Courant, consisting of four staves of music in treble clef and 3/4 time. The first staff starts at measure 1. The second staff starts at measure 5. The third staff starts at measure 11. The fourth staff starts at measure 16. The piece concludes with a double bar line and repeat sign.

35. Alemanda

5

8

13

36. Alemanda

4

8

12

16

37. Alemanda

4

6

10

38. Ballet

Musical score for '38. Ballet' in G major, common time. The score consists of four staves. The first staff starts at measure 1. The second staff starts at measure 5. The third staff starts at measure 8. The fourth staff starts at measure 13 and ends with a double bar line and repeat sign.

39. Courant

Musical score for '39. Courant' in G major, 3/4 time. The score consists of four staves. The first staff starts at measure 1. The second staff starts at measure 6. The third staff starts at measure 12. The fourth staff starts at measure 17 and ends with a double bar line and repeat sign.

40. Ballet

Musical score for '40. Ballet' in G major, common time. The score consists of four staves. The first staff starts at measure 1. The second staff starts at measure 5. The third staff starts at measure 8. The fourth staff starts at measure 13 and ends with a double bar line and repeat sign.

41. Courant

Musical score for 41. Courant, measures 1-16. The piece is in G major (one sharp) and 3/4 time. It consists of four staves of music. The first staff (measures 1-4) begins with a treble clef, a key signature of one sharp, and a 3/4 time signature. The melody starts on G4. The second staff (measures 5-8) continues the melody. The third staff (measures 9-12) features a repeat sign at the beginning. The fourth staff (measures 13-16) concludes with a double bar line and repeat dots.

42. Ballet

Musical score for 42. Ballet, measures 1-20. The piece is in G major (one sharp) and common time (C). It consists of six staves of music. The first staff (measures 1-4) begins with a treble clef, a key signature of one sharp, and a common time signature. The melody starts on G4. The second staff (measures 5-8) continues the melody. The third staff (measures 9-12) features a repeat sign at the beginning. The fourth staff (measures 13-16) continues the melody. The fifth staff (measures 17-20) concludes with a double bar line and repeat dots.

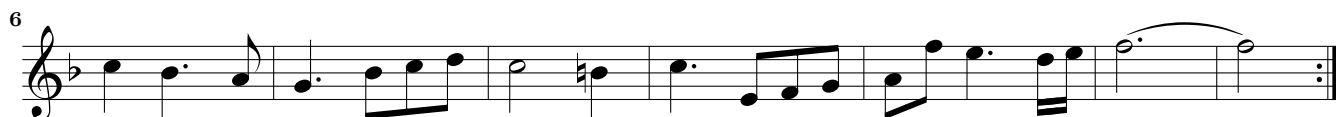
43. Alemanda

Musical score for 43. Alemanda, measures 1-11. The piece is in G minor (two flats) and common time (C). It consists of four staves of music. The first staff (measures 1-4) begins with a treble clef, a key signature of two flats, and a common time signature. The melody starts on G3. The second staff (measures 5-8) continues the melody. The third staff (measures 9-10) features a repeat sign at the beginning. The fourth staff (measures 11) concludes with a double bar line and repeat dots.

44. Alemanda



45. Courant



46. Alemanda



47. Alemanda

4

8

13

48. Alemanda

5

9

14

49. Ballet

5

9

50. Courant

8

16