

PADUANEN,
Alemanden, Couranten,
Balletten, Sarabanden

Mit drei Stimmen und Basso pro Organo

Leipzig 1645

Johann Rosenmüller
1619 – 1684

Published by Johan Tufvesson.

Non-commercial copying welcome

Revision : 1.1

Paduanen, Alemanden, Couranten, Balletten, Sarabanden

Johann Rosenmüller (1619–1684)

1. Paduana

4

7

11

15

18

21

25

29

33

36

39

41

2. Alemanda



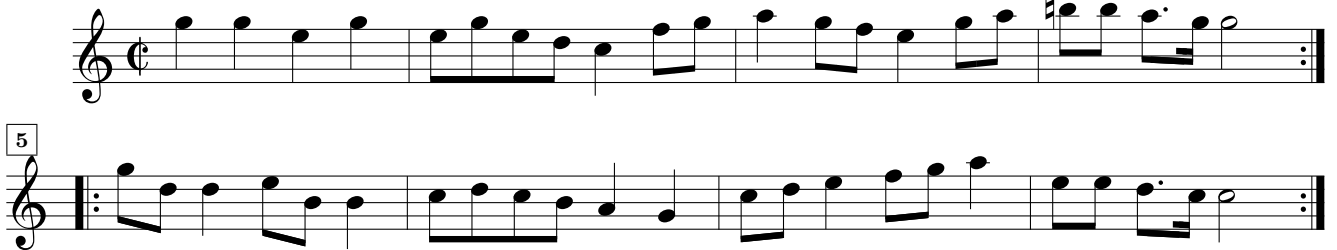
Musical score for Alemanda, consisting of three staves of music in treble clef and common time. The first staff contains the first six measures. The second staff, starting at measure 4, contains measures 4 through 7. The third staff, starting at measure 8, contains measures 8 through 12. The piece concludes with a double bar line and repeat dots.

3. Courant



Musical score for Courant, consisting of three staves of music in treble clef and 3/4 time. The first staff contains the first six measures. The second staff, starting at measure 6, contains measures 6 through 11. The third staff, starting at measure 12, contains measures 12 through 18. The piece concludes with a double bar line and repeat dots.

4. Ballet



Musical score for Ballet, consisting of two staves of music in treble clef and common time. The first staff contains the first five measures. The second staff, starting at measure 5, contains measures 5 through 10. The piece concludes with a double bar line and repeat dots.

5. Sarabanda

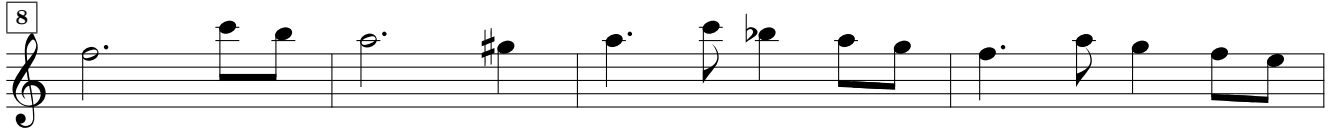


Musical score for Sarabanda, consisting of three staves of music in treble clef and 3/4 time. The first staff contains the first six measures. The second staff, starting at measure 6, contains measures 6 through 10. The third staff, starting at measure 11, contains measures 11 through 15. The piece concludes with a double bar line and repeat dots.

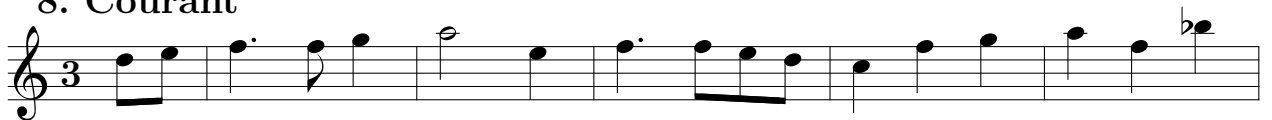
6. Paduana

The image displays a musical score for a piece titled "6. Paduana" from "Cantus I". The score is written in a single system on a grand staff (treble clef) and consists of 45 measures. The key signature is one flat (B-flat), and the time signature is common time (C). The score is divided into measures, with measure numbers 5, 8, 13, 17, 21, 25, 29, 33, 36, 39, and 42 marked in boxes at the beginning of their respective lines. The music features a mix of eighth and sixteenth notes, often beamed together, and includes various rests and accidentals (sharps, flats, and naturals). The piece concludes with a double bar line and repeat dots at the end of the 45th measure.

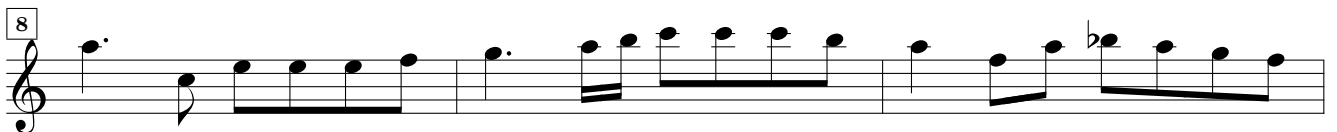
7. Alemanda



8. Courant



9. Ballet



10. Sarabanda

Cantus I

Musical score for Sarabanda Cantus I, measures 1-12. The piece is in 3/4 time and D minor. The notation includes a treble clef, a key signature of one flat, and a time signature of 3/4. The melody consists of eighth and quarter notes, with a repeat sign at measure 6.

11. Paduana

Musical score for Paduana, measures 1-43. The piece is in 3/4 time and D major. The notation includes a treble clef, a key signature of two sharps, and a time signature of 3/4. The melody features a mix of eighth, quarter, and half notes, with several repeat signs and a final double bar line at measure 43.

12. Alemanda

Musical score for 12. Alemanda, consisting of three staves of music in G major and common time. The first staff shows the beginning of the piece. The second staff starts at measure 4 and ends with a repeat sign. The third staff starts at measure 8 and ends with a repeat sign.

13. Courant

Musical score for 13. Courant, consisting of three staves of music in G major and 3/4 time. The first staff shows the beginning of the piece. The second staff starts at measure 5 and ends with a repeat sign. The third staff starts at measure 10 and ends with a repeat sign.

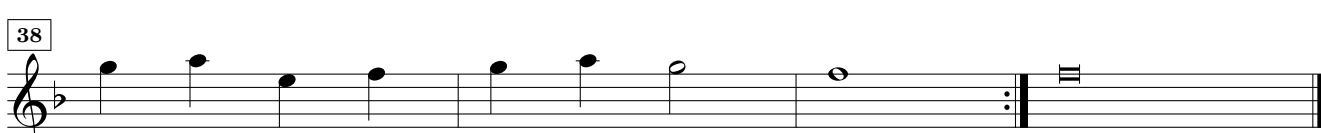
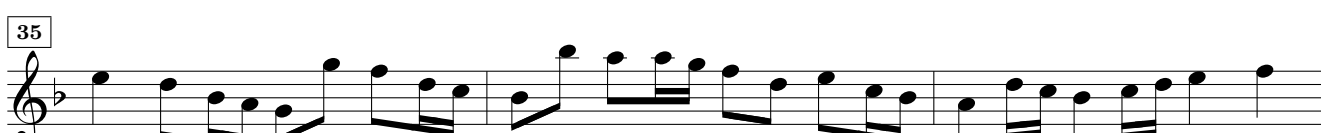
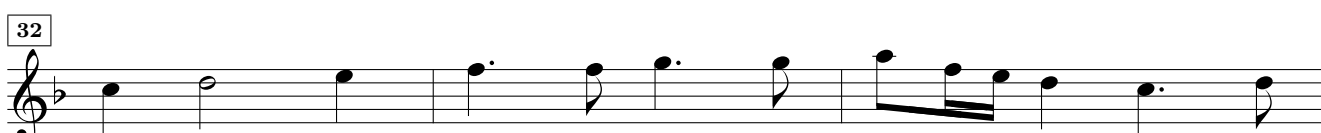
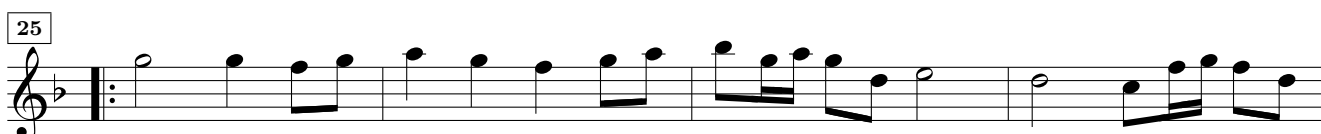
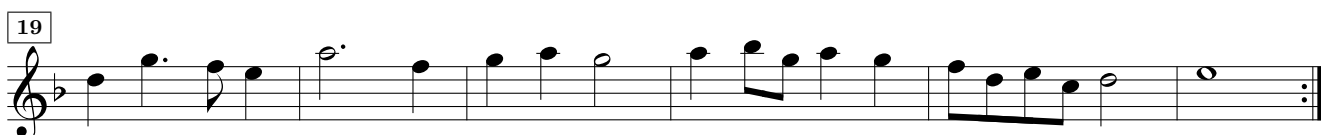
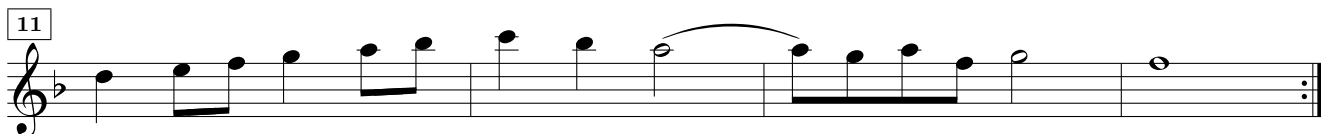
14. Ballet

Musical score for 14. Ballet, consisting of two staves of music in G major and common time. The first staff shows the beginning of the piece. The second staff starts at measure 5 and ends with a repeat sign.

15. Sarabanda

Musical score for 15. Sarabanda, consisting of three staves of music in G major and common time. The first staff shows the beginning of the piece. The second staff starts at measure 6 and ends with a repeat sign. The third staff starts at measure 12 and ends with a repeat sign.

16. Paduana



17. Alemanda

Musical score for 17. Alemanda, consisting of four staves of music in G minor (one flat) and common time. The first staff begins with a treble clef and a common time signature. The second staff is marked with a '4' at the beginning. The third staff is marked with a '7' at the beginning. The fourth staff is marked with an '11' at the beginning. The piece concludes with a double bar line and repeat dots.

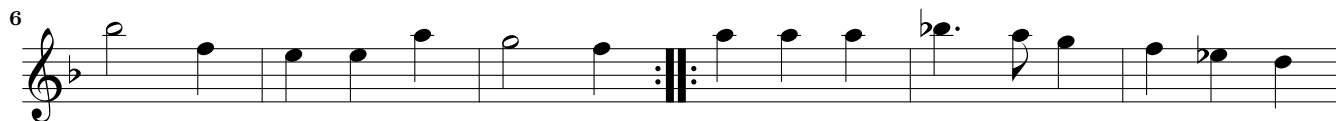
18. Courant

Musical score for 18. Courant, consisting of four staves of music in G minor (one flat) and 3/4 time. The first staff begins with a treble clef and a 3/4 time signature. The second staff is marked with a '6' at the beginning. The third staff is marked with a '12' at the beginning. The fourth staff is marked with a '19' at the beginning. The piece concludes with a double bar line and repeat dots.

19. Ballet

Musical score for 19. Ballet, consisting of four staves of music in G minor (one flat) and common time. The first staff begins with a treble clef and a common time signature. The second staff is marked with a '3' at the beginning. The third staff is marked with a '6' at the beginning. The fourth staff is marked with a '10' at the beginning. The piece concludes with a double bar line and repeat dots.

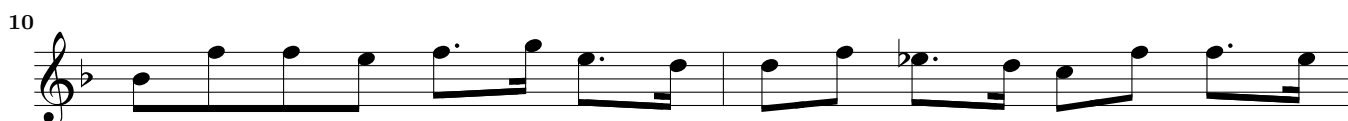
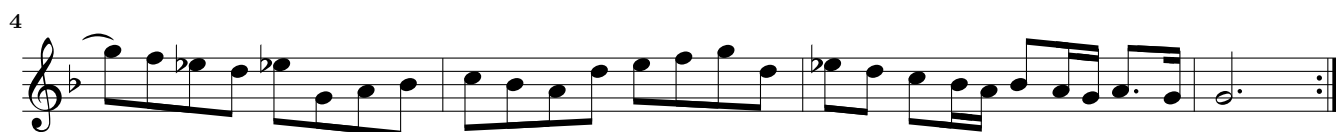
20. Sarabanda



21. Alemanda



22. Alemanda



23. Alemanda

4

7

11

24. Alemanda

4

7

11

14

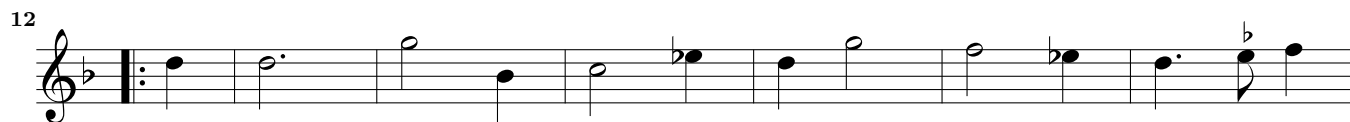
25. Alemanda

4

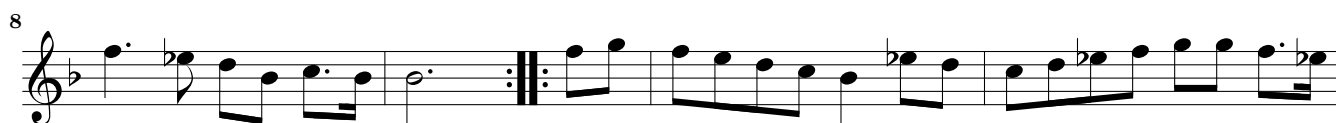
8

11

26. Courant



27. Alemanda



28. Courant



29. Alemanda

5

8

12

30. Courant

6

13

19

31. Alemanda

4

8

12

15

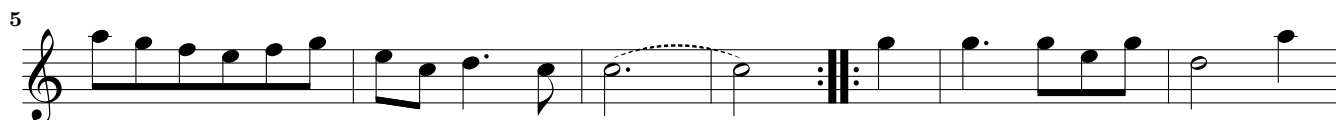
32. Alemanda



33. Alemanda



34. Courant



35. Alemanda

Musical score for piece 35, Alemanda. The score is written in G major (one sharp) and 3/4 time. It consists of four staves of music. The first staff starts with a treble clef and a common time signature. The second staff begins with a measure rest and a measure number '5'. The third staff begins with a measure rest and a measure number '8'. The fourth staff begins with a measure rest and a measure number '13'. The piece concludes with a double bar line and repeat dots.

36. Alemanda

Musical score for piece 36, Alemanda. The score is written in G major (one sharp) and 3/4 time. It consists of four staves of music. The first staff starts with a treble clef and a common time signature. The second staff begins with a measure rest and a measure number '5'. The third staff begins with a measure rest and a measure number '9'. The fourth staff begins with a measure rest and a measure number '12'. The piece concludes with a double bar line and repeat dots.

37. Alemanda

Musical score for piece 37, Alemanda. The score is written in G major (one sharp) and 3/4 time. It consists of three staves of music. The first staff starts with a treble clef and a common time signature. The second staff begins with a measure rest and a measure number '4'. The third staff begins with a measure rest and a measure number '6'. The piece concludes with a double bar line and repeat dots.

38. Ballet

5

8

13

39. Courant

6

12

18

40. Ballet

4

8

13

41. Courant

Musical score for 41. Courant, measures 1-16. The piece is in G major (one sharp) and 3/4 time. It consists of four staves of music. The first staff (measures 1-4) begins with a treble clef, a key signature of one sharp, and a 3/4 time signature. The melody features eighth and sixteenth notes. The second staff (measures 5-8) continues the melody. The third staff (measures 9-12) includes a repeat sign at the beginning. The fourth staff (measures 13-16) concludes with a double bar line and repeat sign.

42. Ballet

Musical score for 42. Ballet, measures 1-20. The piece is in G major (one sharp) and common time (C). It consists of six staves of music. The first staff (measures 1-4) begins with a treble clef, a key signature of one sharp, and a common time signature. The melody is primarily eighth notes. The second staff (measures 5-8) continues the melody. The third staff (measures 9-12) includes a repeat sign at the beginning. The fourth staff (measures 13-16) continues the melody. The fifth staff (measures 17-20) concludes with a double bar line and repeat sign.

43. Alemanda

Musical score for 43. Alemanda, measures 1-11. The piece is in G minor (two flats) and common time (C). It consists of three staves of music. The first staff (measures 1-4) begins with a treble clef, a key signature of two flats, and a common time signature. The melody features eighth and sixteenth notes. The second staff (measures 5-8) includes a repeat sign at the beginning. The third staff (measures 9-11) concludes with a double bar line and repeat sign.

44. Alemanda

4

7

11

14

45. Courant

6

13

20

46. Alemanda

4

8

12

47. Alemanda

Musical score for piece 47, Alemanda. The score is written in G minor (one flat) and 3/4 time. It consists of three staves of music. The first staff begins with a treble clef and a common time signature. The second staff starts at measure 5. The third staff starts at measure 8 and ends with a double bar line and repeat sign.

48. Alemanda

Musical score for piece 48, Alemanda. The score is written in G minor (one flat) and 3/4 time. It consists of three staves of music. The first staff begins with a treble clef and a common time signature. The second staff starts at measure 5. The third staff starts at measure 9 and ends with a double bar line and repeat sign.

49. Ballet

Musical score for piece 49, Ballet. The score is written in G minor (one flat) and 3/4 time. It consists of three staves of music. The first staff begins with a treble clef and a common time signature. The second staff starts at measure 5. The third staff starts at measure 9 and ends with a double bar line and repeat sign.

50. Courant

Musical score for piece 50, Courant. The score is written in G minor (one flat) and 3/4 time. It consists of four staves of music. The first staff begins with a treble clef and a common time signature. The second staff starts at measure 6. The third staff starts at measure 12. The fourth staff starts at measure 18 and ends with a double bar line and repeat sign.