

SONATE

à 3. 4. e 5.

Con alcune Allemand, Correnti e Balletti

à 3

Innsbruck 1653

William Young

?? – 1662

Published by Johan Tufvesson.

Non-commercial copying welcome

Revision : 1.2

Name	Instr.	Page
Sonata Prima	2vl, viol, bc	4
Sonata Secunda	2vl, viol, bc	5
Sonata Terza	2vl, viol, bc	6
Sonata Quarta	3vl, viol, bc	8
Sonata Quinta	3vl, viol, bc	10
Sonata Sesta	3vl, viol, bc	12
Sonata Settima	3vl, viol, bc	14
Sonata Ottava	3vl, viol, bc	16
Sonata Nona	3vl, viol, bc	18
Sonata Decima	3vl, viol, bc	19
Sonata Undecima	4vl, viol, bc	20
Allemand 1	2vl, viol, bc	22
Allemand 2	2vl, viol, bc	22
Corrente 1	2vl, viol, bc	23
Allemand 3	2vl, viol, bc	23
Corrente 2	2vl, viol, bc	23
Allemand 4	2vl, viol, bc	24
Allemand 5	2vl, viol, bc	24
Corrente 3	2vl, viol, bc	25
Corrente 4	2vl, viol, bc	25
Saraband 1	2vl, viol, bc	25
Corrente 5	2vl, viol, bc	26
Allemand 6	2vl, viol, bc	26
Corrente 6	2vl, viol, bc	27
Saraband 2	2vl, viol, bc	27
Allemand 7	2vl, viol, bc	27
Corrente 7	2vl, viol, bc	28
Balletto	2vl, viol, bc	28
Corrente 8	2vl, viol, bc	28
Corrente 9	2vl, viol, bc	29

Sonata Prima. à 3

William Young
(??-1662)

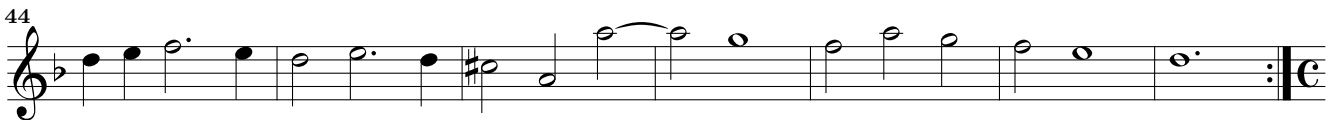
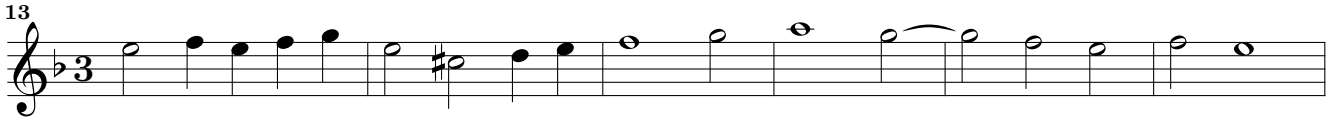
Canzona

5
10
15
21
27
33
43
49
54
59
64
69
74

p
p

Da Capo

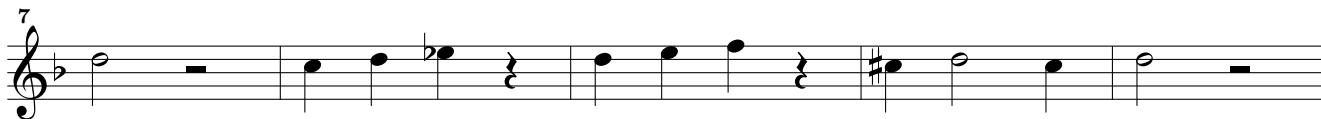
Sonata Secunda. à 3



Canzona

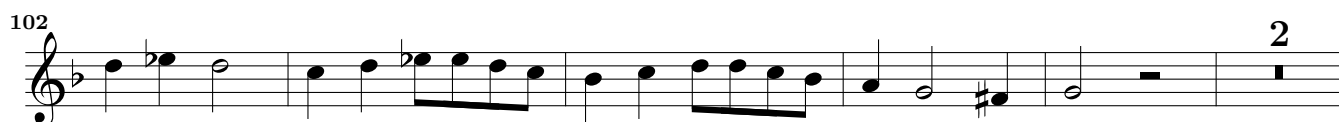
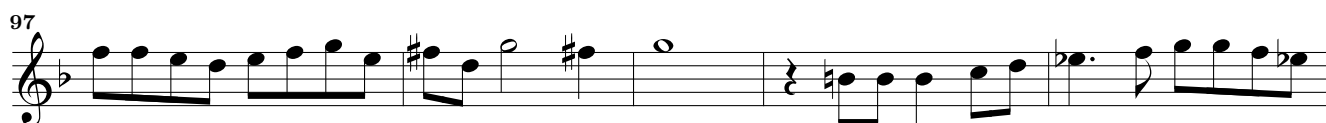


Sonata Terza. à 3

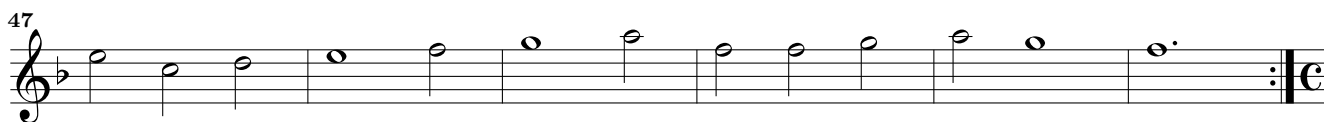
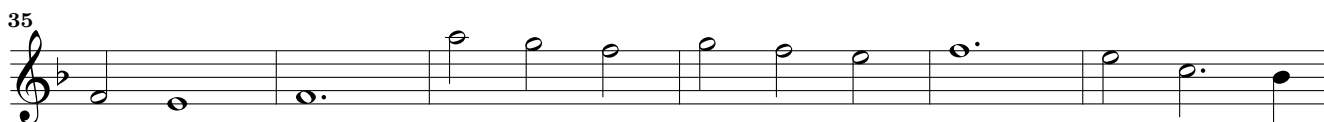
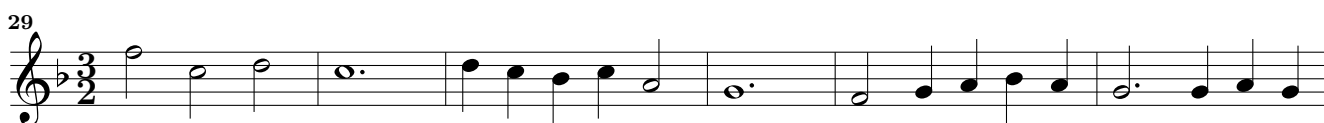
*Allegro*

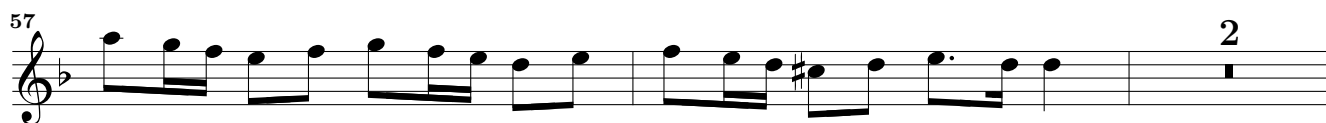
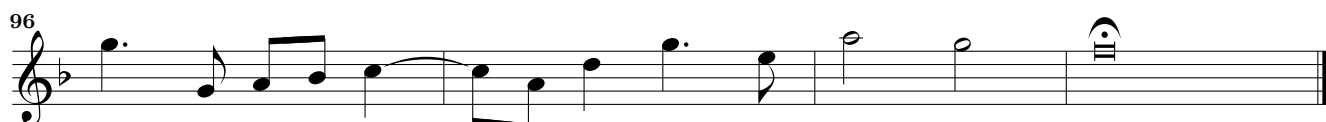
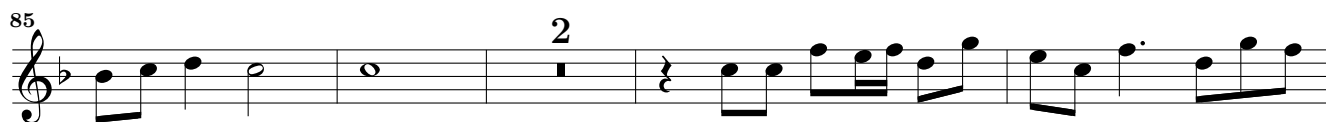


Canzona



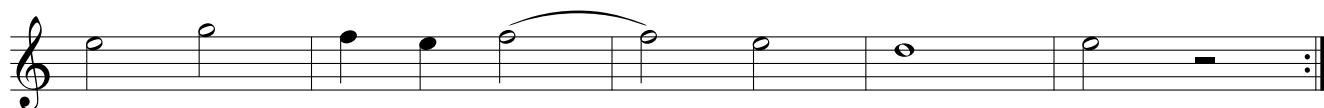
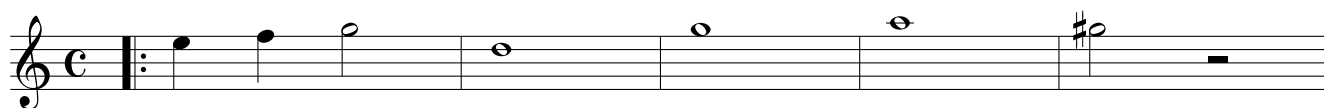
Sonata Quarta. à 4

Adagio*Allegro**Adagio**Allegro*

Allegro*Canzona*

Sonata Quinta. à 4

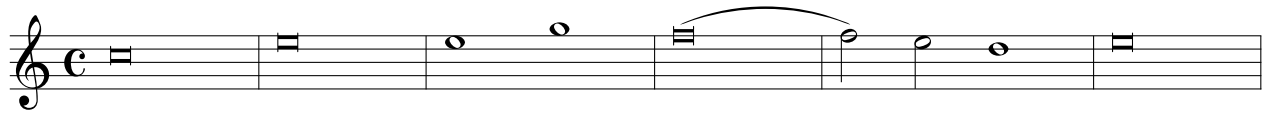
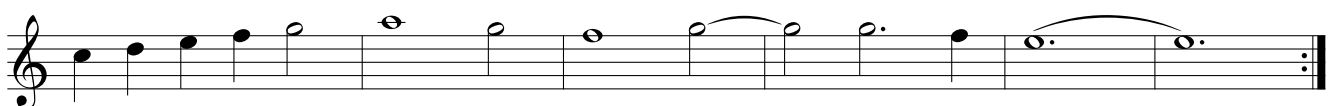
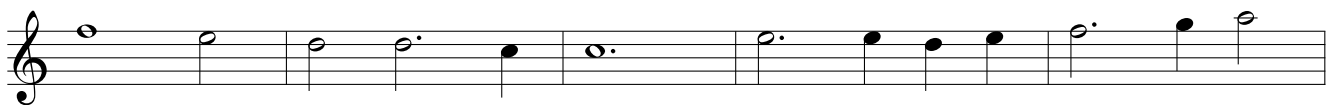
Musical score for Sonata Quinta. à 4, page 10. The score consists of ten staves of music in treble clef, common time (C). The first three staves are in 3/4 time, and the last seven staves are in 6/4 time. The music features various rhythmic patterns, including eighth and sixteenth notes, and rests. A dynamic marking *p* (piano) is present in the eighth staff. The piece concludes with a double bar line and a common time signature.



Canzona



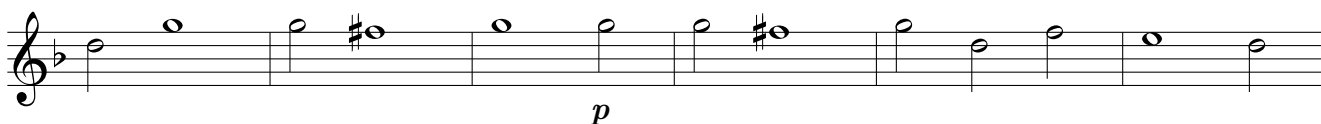
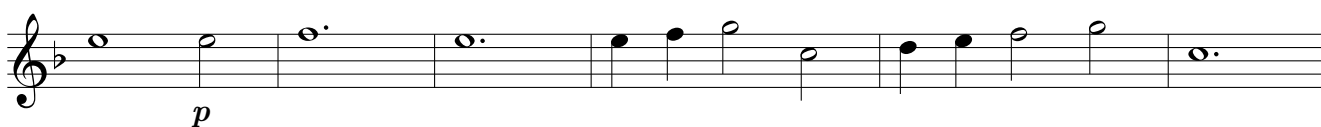
Sonata Sesta. à 4

*Allegro*

p

Canzona

Sonata Settima. à 4

*Allegro*

p

p

p

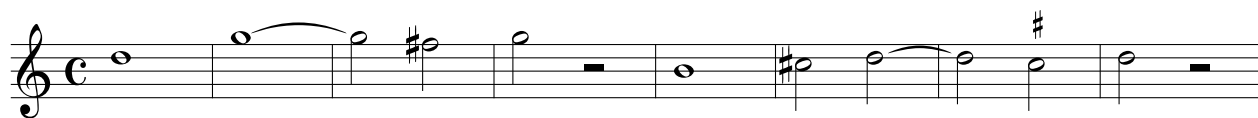
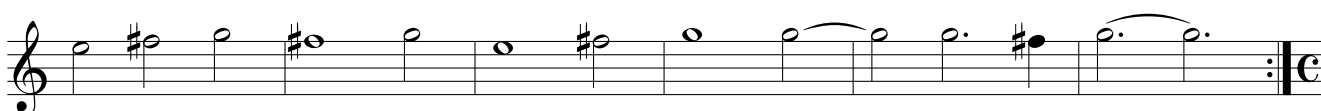
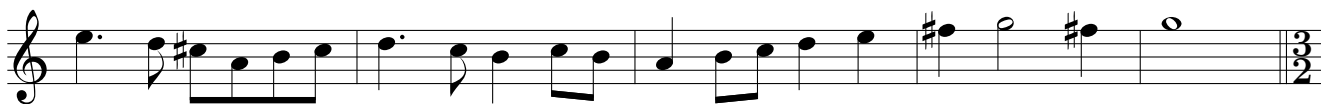
p

p

Canzona

p

Sonata Ottava. à 4

*Allegro*

Allegro

Musical score for the *Allegro* section, consisting of four staves of music in treble clef with a common time signature (C). The piece begins with a repeat sign and a key signature of one sharp (F#). The music features a mix of eighth and sixteenth notes, with some rests and a final double bar line with repeat dots.

Canzona

Musical score for the *Canzona* section, consisting of seven staves of music in treble clef with a common time signature (C). The piece begins with a repeat sign and a key signature of one sharp (F#). The music features a mix of eighth and sixteenth notes, with some rests and a final double bar line with repeat dots. A second ending bracket is present on the third staff.

Sonata Nona. à 4

Musical score for the first part of Sonata Nona. à 4, consisting of eight staves of music in common time (C). The score features various melodic lines with slurs and rests, ending with a double bar line and repeat sign.

Canzona

Musical score for the second part of Sonata Nona. à 4, titled "Canzona", consisting of seven staves of music in common time (C). The score is characterized by rhythmic patterns, slurs, and dynamic markings such as "p" (piano).

Sonata Decima. à 4

Musical score for the first section of Sonata Decima. à 4, measures 1-12. The score is written for four staves in 3/2 time. The key signature has one flat (B-flat). The first staff begins with a treble clef and a 3/2 time signature. The music consists of a series of eighth and quarter notes, with a key signature change to two sharps (F# and C#) in the final measure of the section.

Allegro

Musical score for the second section of Sonata Decima. à 4, measures 13-24. The section is marked *Allegro* and is in common time (C). It features a more rhythmic and melodic style with eighth and sixteenth notes. The key signature changes to two sharps (F# and C#) in the final measure of the section.

Canzona

Musical score for the third section of Sonata Decima. à 4, measures 25-36. The section is marked *Canzona* and is in common time (C). It features a more melodic and lyrical style with eighth and quarter notes. A second ending bracket is present over measures 30-32, with a '2' above it. The key signature changes to two sharps (F# and C#) in the final measure of the section.

Sonata Undecima. à 5

Allegro

Resposte

Musical score for the *Resposte* section, consisting of seven staves of music in treble clef. The first staff begins with a repeat sign and a common time signature 'C'. The piece features various rhythmic patterns, including eighth and sixteenth notes, and rests. Fingerings are indicated by numbers 1-4 above notes. The section concludes with a double bar line and repeat dots.

Canzona

Musical score for the *Canzona* section, consisting of seven staves of music in treble clef. The piece is characterized by a slower, more melodic style with many half and whole notes. It includes several measures with rests. Fingerings are indicated by numbers 3 and 4 above notes. The section ends with a double bar line and repeat dots.

Allemand 1.

Musical score for Allemand 1, Violino Primo. The score is written in treble clef, common time (C), and one flat (B-flat). It consists of six staves of music. The first staff begins with a 7-measure rest. The piece features a mix of eighth and sixteenth notes, with some triplet markings. The key signature changes from one flat to two flats (B-flat and E-flat) in the final section of the piece.

Allemand 2.

Musical score for Allemand 2, Violino Primo. The score is written in treble clef, common time (C), and one flat (B-flat). It consists of eight staves of music. The first staff begins with a 7-measure rest. The piece features a mix of eighth and sixteenth notes, with some triplet markings. The key signature changes from one flat to two flats (B-flat and E-flat) in the final section of the piece.

Corrente 1.

Musical score for *Corrente 1.* in G minor, 6/4 time, 2/2 meter. The score consists of five staves of music. The first staff begins with a treble clef, a key signature of one flat (B-flat), and a 6/4 time signature. The music features a mix of eighth and sixteenth notes, with some rests and a repeat sign at the end of the first line. The second staff continues the melody with similar rhythmic patterns. The third staff includes a repeat sign and a fermata over a half note. The fourth staff has a 7-measure rest followed by eighth notes. The fifth staff concludes with a repeat sign and a fermata over a half note.

Allemand 3.

Musical score for *Allemand 3.* in G minor, common time (C). The score consists of three staves of music. The first staff begins with a treble clef, a key signature of one flat (B-flat), and a common time signature. The music is characterized by eighth and sixteenth notes. The second staff features a repeat sign and a fermata over a half note. The third staff concludes with a repeat sign and a fermata over a half note.

Corrente 2.

Musical score for *Corrente 2.* in G minor, 6/4 time. The score consists of four staves of music. The first staff begins with a treble clef, a key signature of one flat (B-flat), and a 6/4 time signature. The music features a mix of eighth and sixteenth notes. The second staff continues the melody with similar rhythmic patterns. The third staff includes a repeat sign and a fermata over a half note. The fourth staff concludes with a repeat sign and a fermata over a half note.

Allemand 4.

Musical score for Allemand 4, measures 1-16. The piece is in 3/4 time and B-flat major. It begins with a treble clef and a common time signature. The melody starts with a quarter rest, followed by a quarter note B-flat, a quarter note A, and a quarter note G. The piece concludes with a double bar line and repeat dots.

Allemand 5.

Musical score for Allemand 5, measures 1-16. The piece is in 3/4 time and B-flat major. It begins with a treble clef and a common time signature. The melody starts with a quarter rest, followed by a quarter note B-flat, a quarter note A, and a quarter note G. The piece concludes with a double bar line and repeat dots.

Corrente 3.
Corrente 4.
Saraband 1.

Corrente 5.

2

b?

Allemand 6.

b?

Corrente 6.

Musical score for Corrente 6, measures 1-16. The piece is in 6/4 time and B-flat major. It consists of four staves of music. The first staff contains measures 1-4, the second staff measures 5-8, the third staff measures 9-12, and the fourth staff measures 13-16. The piece concludes with a double bar line and repeat dots.

Saraband 2.

Musical score for Saraband 2, measures 1-16. The piece is in 6/4 time and B-flat major. It consists of four staves of music. The first staff contains measures 1-4, the second staff measures 5-8, the third staff measures 9-12, and the fourth staff measures 13-16. The piece concludes with a double bar line and repeat dots.

Allemand 7.

Musical score for Allemand 7, measures 1-16. The piece is in common time (C) and B-flat major. It consists of five staves of music. The first staff contains measures 1-4, the second staff measures 5-8, the third staff measures 9-12, the fourth staff measures 13-16, and the fifth staff measures 17-20. The piece concludes with a double bar line and repeat dots.

Corrente 7.

Musical score for Corrente 7, Violino Primo. The piece is in 6/4 time and B-flat major. It consists of four staves of music. The first staff begins with a treble clef, a key signature of one flat, and a 6/4 time signature. The melody is written in a single line. The second staff continues the melody. The third staff features a repeat sign at the beginning. The fourth staff concludes the piece with a double bar line and repeat dots.

Balletto

Musical score for Balletto, Violino Primo. The piece is in 6/4 time and B-flat major. It consists of seven staves of music. The first staff begins with a treble clef, a key signature of one flat, and a 6/4 time signature. The melody is written in a single line. The second staff continues the melody. The third staff features a repeat sign at the beginning. The fourth staff continues the melody. The fifth staff continues the melody. The sixth staff continues the melody. The seventh staff concludes the piece with a double bar line and repeat dots.

Corrente 8.

Musical score for Corrente 8, Violino Primo. The piece is in 6/4 time and B-flat major. It consists of two staves of music. The first staff begins with a treble clef, a key signature of one flat, and a 6/4 time signature. The melody is written in a single line. The second staff features a repeat sign at the beginning and concludes the piece with a double bar line and repeat dots.

