

# HORTULUS CHELICUS

## Violino Solo

Mainz 1688

Johann Jakob Walther  
c. 1650 – 1717

Published by Johan Tufvesson.

Non-commercial copying welcome

*Revision : 1.9*

# XIII. Aria

Johann Jacob Walther  
(ca.1650-1717)

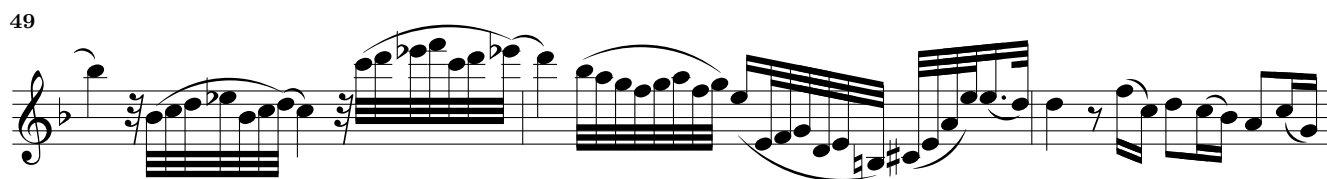
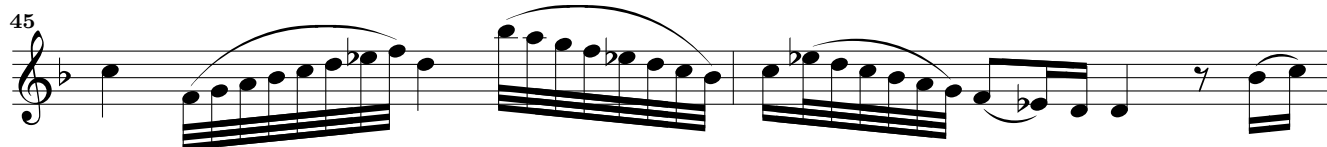
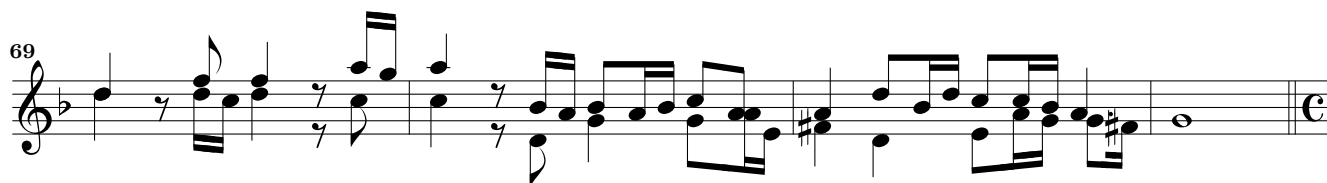
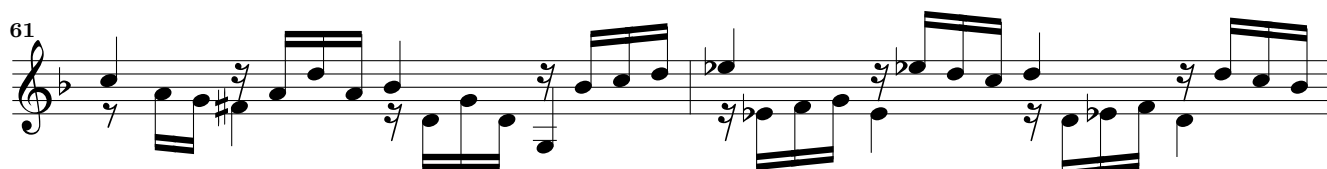
The first part of the score consists of six staves of music in G minor, common time. It begins with a treble clef and a key signature of one flat. The melody is characterized by eighth and sixteenth notes, often with grace notes. The accompaniment features a steady eighth-note pattern. Measure numbers 4, 8, 11, and 15 are indicated at the start of their respective staves.

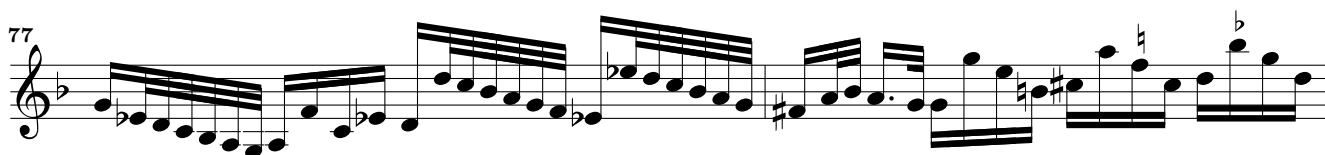
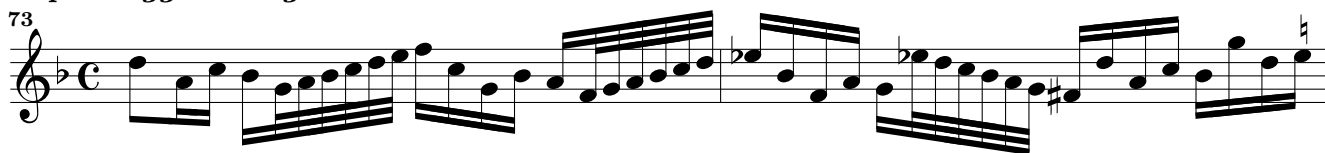
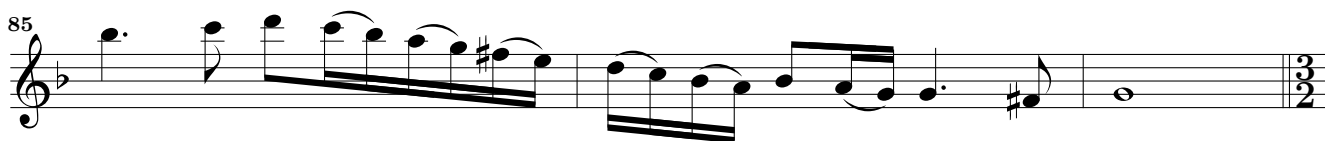
*Var.*

The first variation, marked *Var.*, spans measures 19 to 36. It is written in a homophonic style with block chords and simple melodic lines. Measure numbers 19, 23, 28, and 32 are indicated at the start of their respective staves.

*Var.*

The second variation, also marked *Var.*, spans measures 37 to 43. It is divided into two sections: measures 37-39 are marked *presto.* and feature a rapid sixteenth-note triplet pattern; measures 40-43 are marked *adag.* and feature a slower eighth-note triplet pattern. Measure numbers 37 and 40 are indicated at the start of their respective staves.

*Variat.*

*passaggio allegro.**Adagio**Aria Lento*