

SONATÆ
UNARUM FIDIUM
Violino Solo

Norimbergæ 1664

Johann Heinrich Schmelzer
c. 1620 – 1680

Published by Johan Tufvesson.

Non-commercial copying welcome

Revision : 1.1

Sonata Prima

J. H. Schmelzer (c. 1620–1680)

6

11

13

15

17

26

30

34

37

40

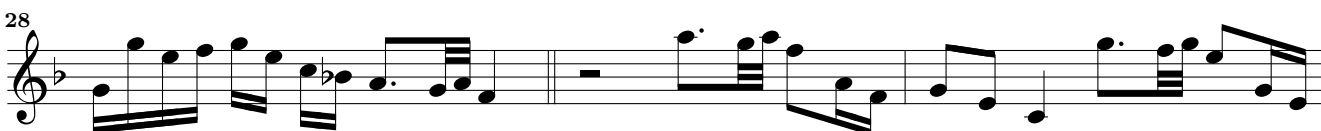
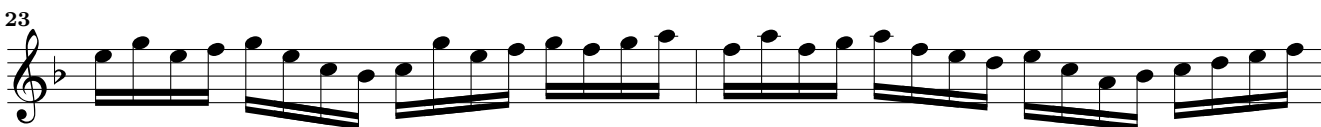
43

Musical score for Violino, Sonata Prima, measures 45-71. The score is written in treble clef and common time (C). It consists of ten staves of music. Measure 45 starts with a treble clef and a key signature of one sharp (F#). Measure 47 has a key signature change to one flat (Bb). Measure 53 has a time signature change to 12/8. Measure 56 has a key signature change to two flats (Bb, Eb). Measure 58 has a key signature change to one flat (Bb). Measure 61 has a key signature change to two flats (Bb, Eb). Measure 65 has a key signature change to one sharp (F#). Measure 67 has a key signature change to one flat (Bb). Measure 69 has a key signature change to one sharp (F#). Measure 71 ends with a double bar line and a common time signature (C).

Musical score for Violino, Sonata Prima, measures 73-106. The score is written in treble clef with a common time signature (C). The key signature is one flat (B-flat). The score consists of 12 staves of music. The first staff (73) begins with a treble clef and a common time signature. The second staff (76) has a B-flat key signature. The third staff (79) has a 7/8 time signature. The fourth staff (81) has a common time signature. The fifth staff (83) has a common time signature. The sixth staff (86) has a B-flat key signature. The seventh staff (88) has a B-flat key signature and the instruction "grozzo." below it. The eighth staff (91) has a B-flat key signature. The ninth staff (93) has a B-flat key signature. The tenth staff (95) has a B-flat key signature and a triplet of eighth notes marked with a "3". The eleventh staff (100) has a 3/2 time signature. The twelfth staff (106) has a common time signature.

Musical score for Violino, Sonata Prima, measures 112-154. The score is written in treble clef and consists of 13 staves of music. The key signature is one sharp (F#). The time signature is common time (C). The music features a variety of rhythmic patterns, including eighth and sixteenth notes, and rests. The piece concludes with a final cadence in measure 154.

Sonata Secunda



Musical score for Violino, Sonata Secunda, measures 37-62. The score is written in treble clef with a key signature of one flat (B-flat). The time signature is 12/8, indicated by a '12' over an '8' in measure 41. The music consists of ten staves of notation, each starting with a measure number. The notation includes various rhythmic values, including eighth and sixteenth notes, and rests. The piece concludes with a double bar line and a 12/8 time signature in the final measure.

Musical score for Violino, Sonata Secunda, measures 64-103. The score is written in treble clef with a key signature of one flat (B-flat). The time signature is 12/8, which changes to 3/2 at measure 71. The music consists of ten staves of notation, each starting with a measure number. The notation includes various rhythmic values, accidentals, and phrasing slurs. The piece concludes with a double bar line at the end of measure 103.

Musical score for Violino, Sonata Secunda, measures 105-135. The score is written in treble clef with a key signature of one flat (B-flat). The music consists of 11 staves of notation. Measures 105-110 show a melodic line with eighth and sixteenth notes. Measures 111-130 feature a complex texture with many triplets (indicated by a '3' above the notes) and some sixteenth-note runs. Measure 131 has a repeat sign. Measures 132-135 conclude the section with a final cadence, including a fermata over the final note.

Sonata Tertia

6

11

14

17

20

22

24

26

28

31

35

f *p* *f* *p*

f *p* *f* *p*

Musical score for Violino, measures 39-58. The score is written in treble clef with a key signature of one flat (B-flat). The tempo is not explicitly marked for this section. The music features a variety of rhythmic patterns, including eighth and sixteenth notes, and rests. A time signature change to 12/8 is indicated at measure 42. The score concludes with a double bar line and a fermata at measure 58.

adagio

Musical score for Violino, measures 61-67. The tempo is marked **adagio**. The score is written in treble clef with a key signature of one flat (B-flat). The music features a variety of rhythmic patterns, including eighth and sixteenth notes, and rests. The score concludes with a double bar line and a fermata at measure 67.

Musical score for Violino, Sonata Tertia, measures 71-105. The score is written in treble clef with a key signature of one flat (B-flat). The music features a complex rhythmic pattern of eighth and sixteenth notes, often beamed together. Dynamics include *f* (forte) and *p* (piano). Trills (*tr*) are present in measures 75, 79, and 89. A triplet of eighth notes appears in measure 89. The score concludes with a final measure in measure 105.

Allegro

111

118

Adagio

125

131

136

140

145

150

154

157

161

165

Sonata Quarta

8

15

21

28

37

43

49

54

58

62

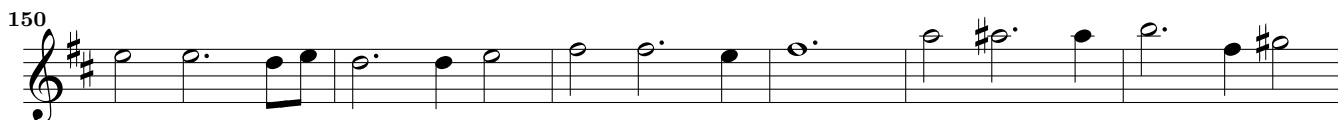
66

70

75

3

Musical score for Violino, Sonata Quarta, measures 81-129. The score is written in treble clef with a key signature of one sharp (F#). The music consists of 12 staves of notation. Measure 81 features a melodic line with a slur over the first two notes. Measure 86 shows a sequence of eighth notes. Measure 91 includes a measure rest followed by a 4-measure rest, then a melodic line. Measure 99 continues the melodic line. Measure 102 shows a sequence of eighth notes. Measure 105 continues the melodic line. Measure 108 shows a sequence of eighth notes. Measure 111 continues the melodic line. Measure 114 shows a sequence of eighth notes. Measure 117 continues the melodic line. Measure 121 shows a sequence of eighth notes. Measure 125 continues the melodic line. Measure 129 ends with a 4-measure rest.

Sarabanda**Gigue**

192

196

199

203

209

213

217

220

222

224

226

p

tr

3

tr

Detailed description: This page contains ten staves of musical notation for a violin part. The key signature is one sharp (F#) and the time signature is common time (C). The music begins at measure 192 and ends at measure 226. The notation includes various note values, rests, and articulation marks. A piano (*p*) dynamic marking appears at measure 199. Trills (*tr*) are indicated at measures 213 and 226. A triplet of eighth notes is shown at measure 203. The piece concludes with a double bar line and a repeat sign at the end of measure 226.

Allegro

Musical score for the Allegro section, measures 230 to 246. The music is written in treble clef with a key signature of one sharp (F#). The tempo is marked Allegro. The score consists of eight staves of music. Measure 236 includes a time signature change to 12/8. The piece concludes with a double bar line and a common time signature (C) at the end of measure 246.

Presto

Musical score for the Presto section, measures 248 to 259. The music is written in treble clef with a key signature of one sharp (F#). The tempo is marked Presto. The score consists of six staves of music. Measure 248 begins with a common time signature (C). The piece concludes with a double bar line and a fermata over the final note in measure 259.

Sonata Quinta

5

9

13

16

Allegro

20

24

27

30

33

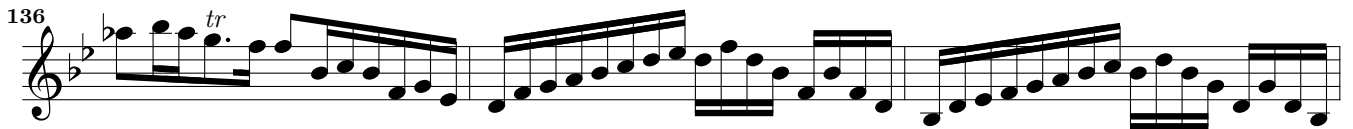
35

38

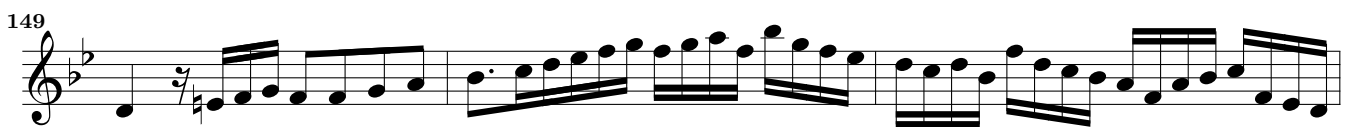
42

Musical score for Violino, Sonata Quinta, measures 47-92. The score is written in G minor (one flat) and 3/4 time. It consists of 12 staves of music. The key signature is G minor (one flat). The time signature is 3/4. The score includes various musical notations such as eighth notes, sixteenth notes, and slurs. Measure 47 starts with a treble clef and a key signature of one flat. The piece concludes at measure 92 with a double bar line and a 12/8 time signature.

Musical score for Sonata Quinta, Violino, measures 90-125. The score is written in treble clef with a key signature of two flats (B-flat and E-flat). The time signature is 12/8, which changes to 6/4 at measure 94 and back to 12/8 at measure 96. The music features a complex rhythmic pattern with many sixteenth and thirty-second notes, often beamed together. There are several trills and grace notes throughout the piece. The score ends with a double bar line at measure 125.



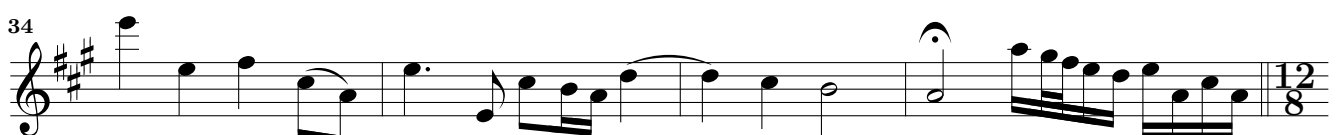
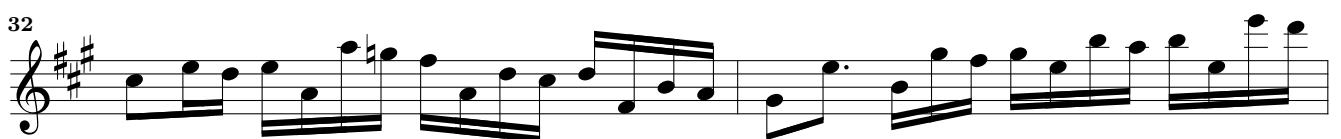
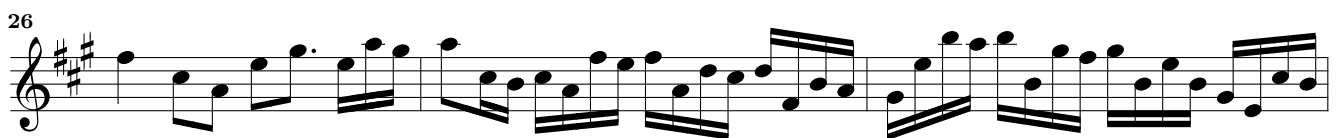
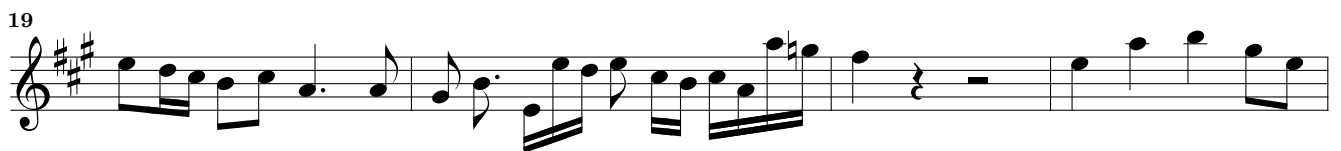
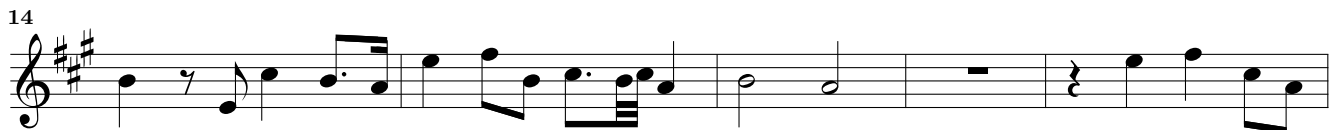
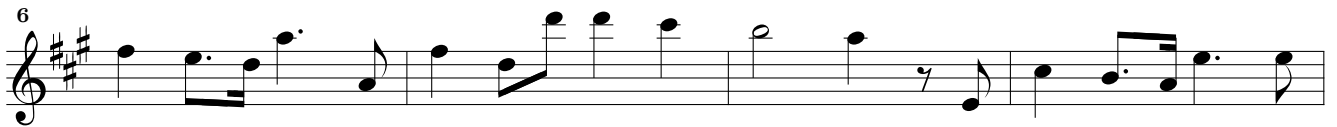
piu allegro



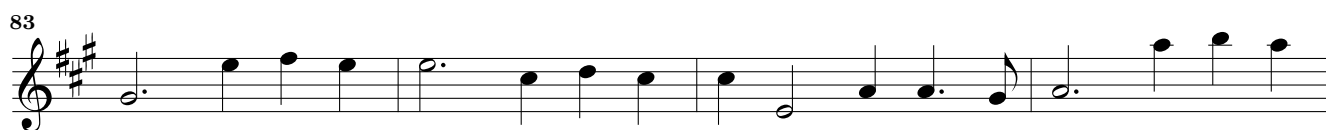
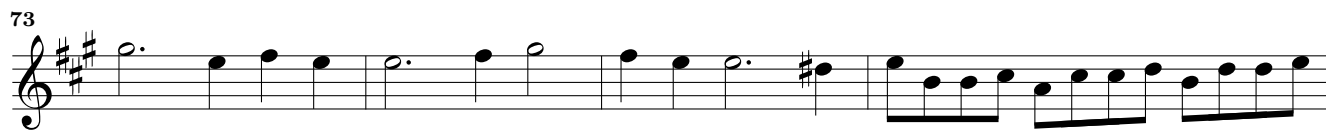
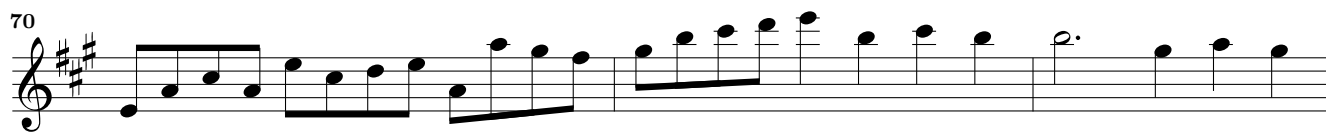
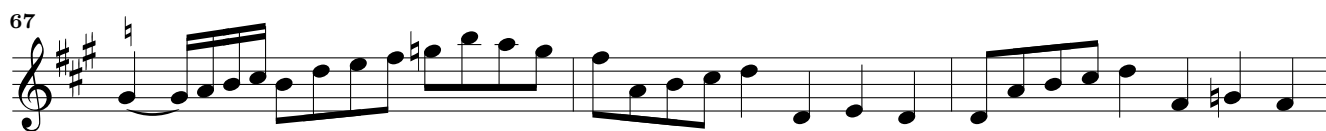
Adagio



Sonata Sexta



Musical score for Violino, Sonata Sexta, measures 38-65. The score is written in treble clef with a key signature of three sharps (F#, C#, G#). The time signature is 12/8. The music features a variety of rhythmic patterns, including eighth and sixteenth notes, and rests. Measure 46 includes a common time signature (C). Measure 53 includes a triplet of eighth notes. Measure 59 includes a sharp sign (#) above a note. Measure 65 includes a sharp sign (#) above a note.



Adagio

96

99

103

105

108

111

113

115

118

121

125

Adagio

tr.

128

131

134

136

138

141

144

146

149

152

154

The image shows a page of musical notation for a violin sonata. It consists of ten staves of music, each starting with a measure number. The key signature is three sharps (F#, C#, G#). The notation includes various rhythmic values, slurs, and dynamic markings. The final measure (154) ends with a double bar line and a fermata over a whole note.