

SONATÆ
UNARUM FIDIUM
Violino Solo

Norimbergæ 1664

Johann Heinrich Schmelzer
c. 1620 – 1680

Published by Johan Tufvesson.

Non-commercial copying welcome

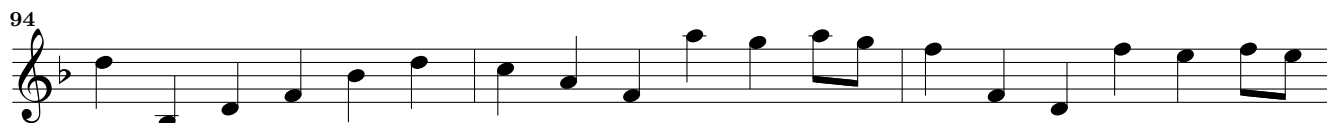
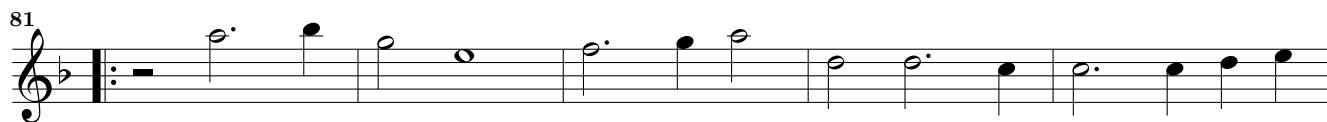
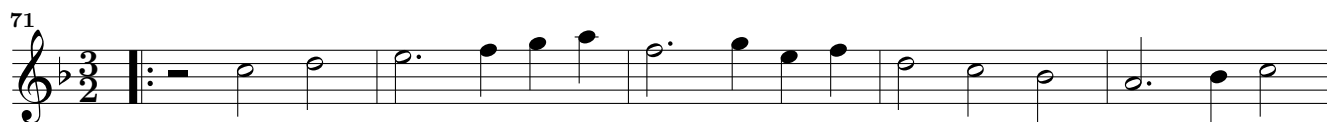
Revision : 1.11

Sonata Secunda

J. H. Schmelzer (c. 1620–1680)

The image displays a musical score for a piece titled "Sonata Secunda" by J. H. Schmelzer, composed around 1620–1680. The score is written in a single system on a grand staff (treble clef) in common time (C). The key signature is one flat (B-flat). The score is divided into measures, with measure numbers 6, 10, 13, 17, 20, 23, 25, 28, 31, and 34 indicated at the beginning of their respective lines. The music features a variety of rhythmic patterns, including eighth and sixteenth notes, and rests. There are several repeat signs (double bar lines with dots) and fermatas throughout the piece. The notation includes slurs, ties, and dynamic markings such as *mf* and *f*.

Musical score for Violino, Sonata Secunda, measures 37-62. The score is written in treble clef with a key signature of one flat (B-flat). The piece features a complex rhythmic structure with frequent sixteenth and thirty-second notes. Measure 41 includes a time signature change to 12/8. Measure 55 includes a fermata. Measure 62 ends with a double bar line and a 12/8 time signature.



Musical score for Sonata Secunda, Violino, measures 105-135. The score is written in treble clef with a key signature of one flat (B-flat). The music features a variety of rhythmic patterns, including eighth and sixteenth notes, and is characterized by frequent triplet markings (indicated by a '3' above or below the notes). The piece concludes with a fermata over the final note in measure 135.