

Studenten-Music

Leipzig 1654

Johann Rosenmüller

c.1619 – 1684

Published by Johan Tufvesson.

Non-commercial copying welcome

Revision : 1.2

Tenor, G clef

Studenten-Music

Leipzig 1654

Johann Rosenmüller

(c.1619–1684)

1-7 Paduan à 3

Tacet

8. Paduan à 5

6
11
16
21
25
29
32
37
42
46
50

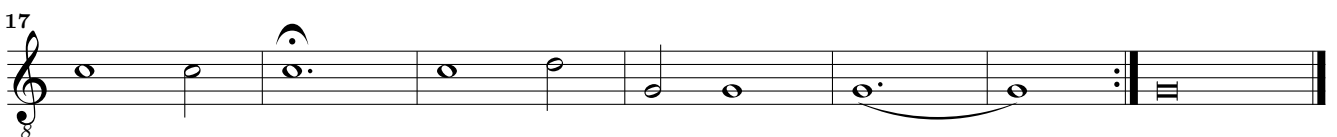
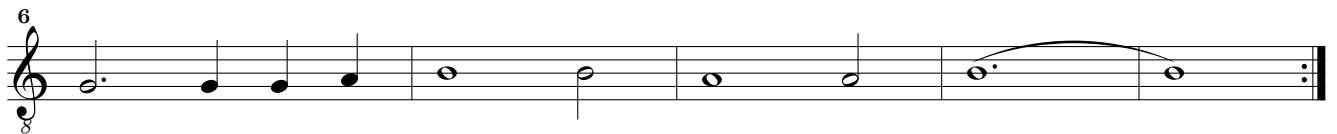
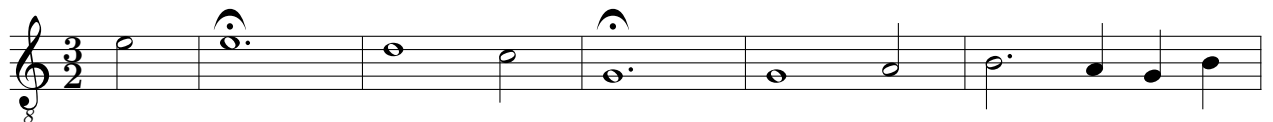
9. Alemanda

Studenten-Music – 11. Courant – Tenor, G clef

3



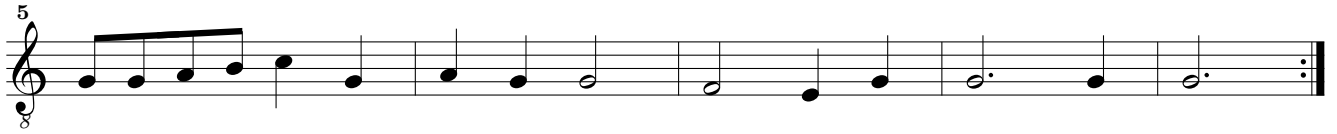
10. Courant Adagio



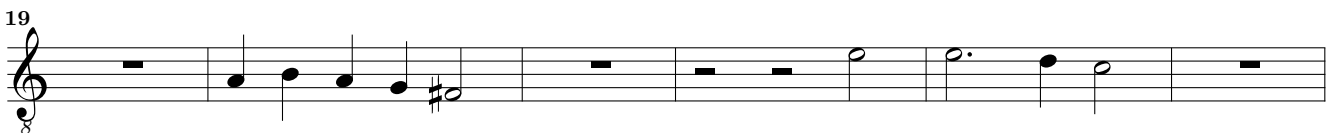
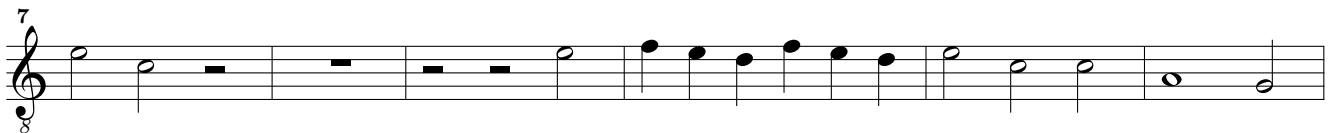
11. Courant Allegro



12. Alemanda

Studenten-Music – 13. Courant – Tenor, G clef

13. Courant



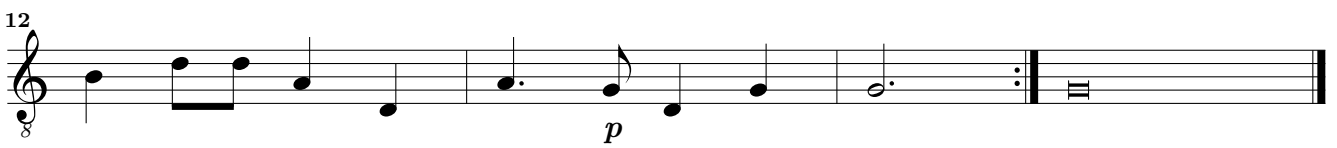
14. Ballo



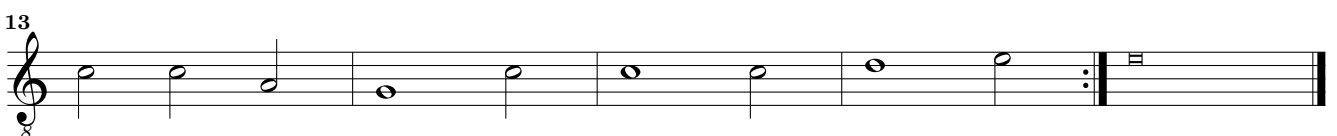
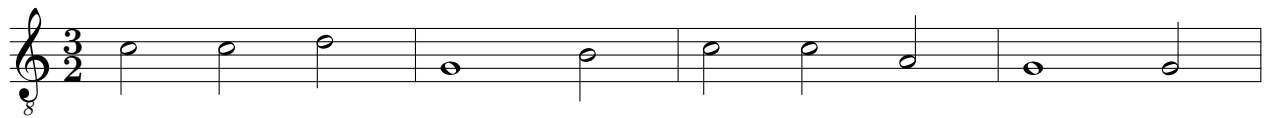
Adagio



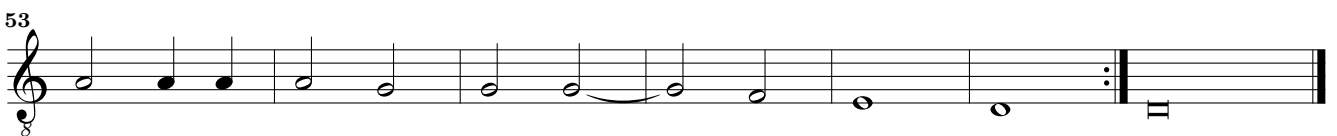
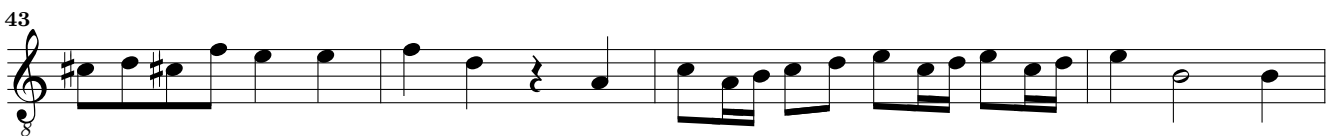
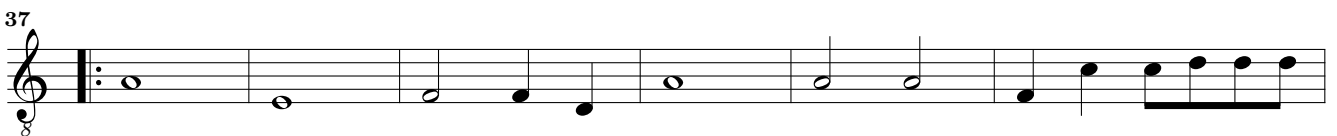
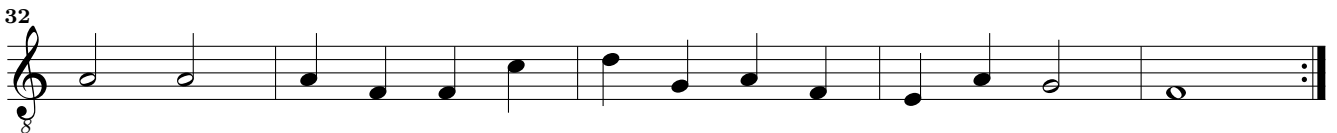
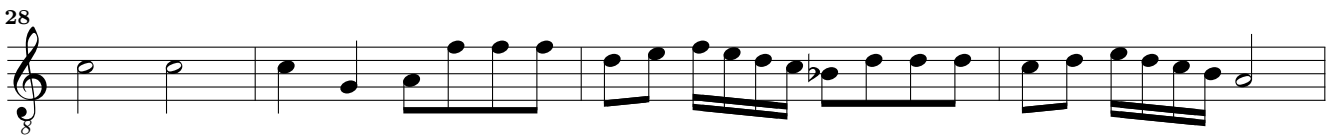
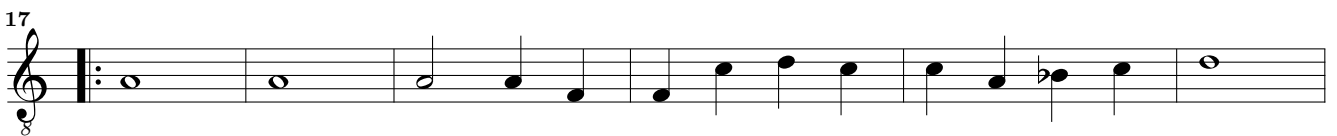
Allegro



15. Sarabanda



16. Paduan



Musical score for 17. Alemanda, Tenor, G clef. The piece is in common time (C). It consists of four staves of music. The first staff begins with a treble clef and a common time signature. The second staff starts at measure 6. The third staff starts at measure 10 and includes a repeat sign. The fourth staff starts at measure 16 and includes a sharp sign (#) at the end.

18. Courant

Musical score for 18. Courant, Tenor, G clef. The piece is in 3/2 time. It consists of three staves of music. The first staff begins with a treble clef and a 3/2 time signature. The second staff starts at measure 6 and includes a fermata over the final two notes. The third staff starts at measure 12 and includes a sharp sign (#) at the end. The fourth staff starts at measure 19 and includes a fermata over the final two notes.

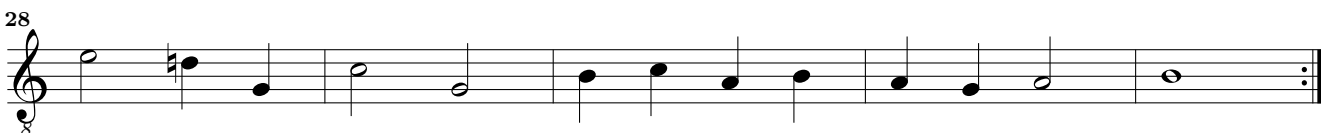
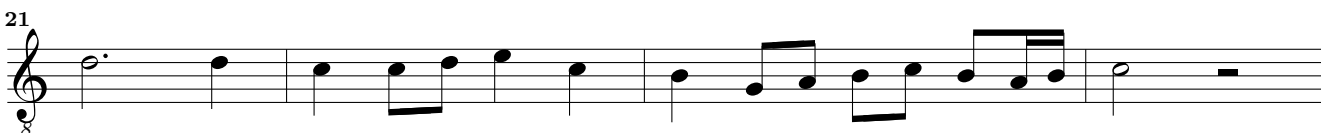
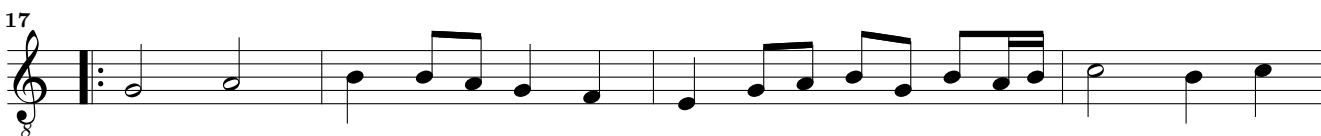
19. Ballo Adagio

Musical score for 19. Ballo Adagio, Tenor, G clef. The piece is in common time (C). It consists of two staves of music. The first staff begins with a treble clef and a common time signature. The second staff starts at measure 5 and includes the tempo marking *Allegro*. The piece ends with a double bar line and repeat dots.

20. Sarabanda

Musical score for 20. Sarabanda, Tenor, G clef. The piece is in 3/2 time. It consists of three staves of music. The first staff begins with a treble clef and a 3/2 time signature. The second staff starts at measure 7 and includes a double bar line with repeat dots. The third staff starts at measure 12 and includes a sharp sign (#) at the end.

21. Paduan



24. Paduan

6

10

14

19

24

29

33

38

42

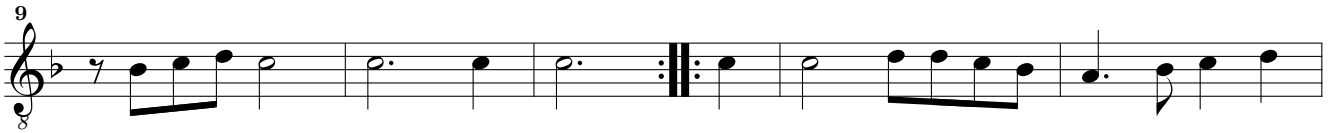
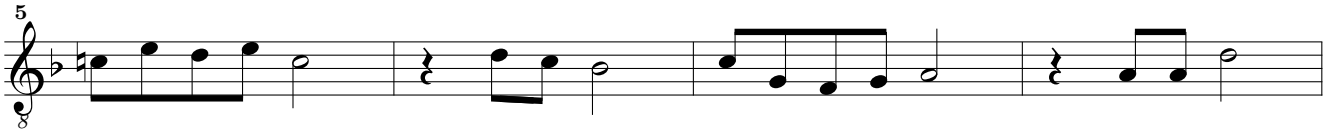
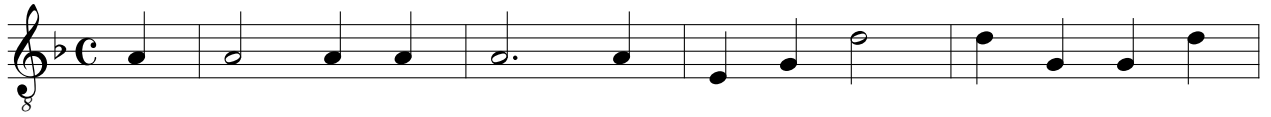
46

51

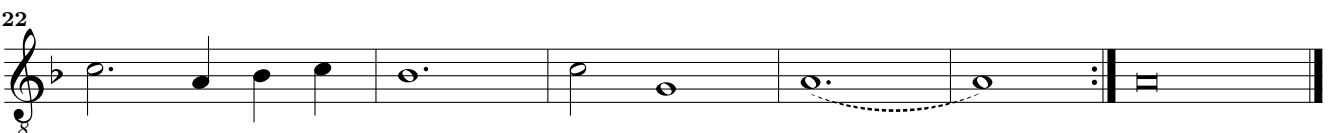
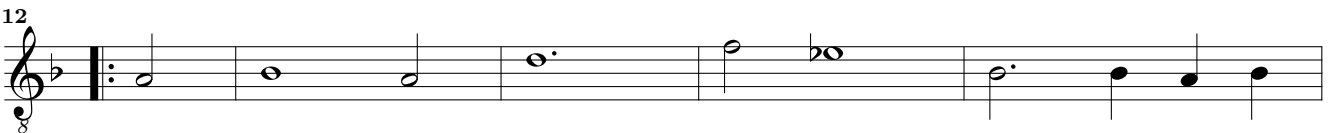
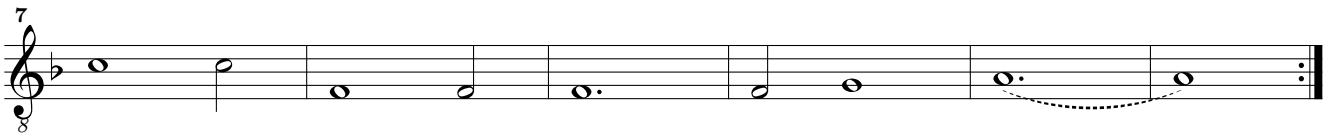
25. Alemanda

Studenten-Music – 26. Courant – Tenor, G clef

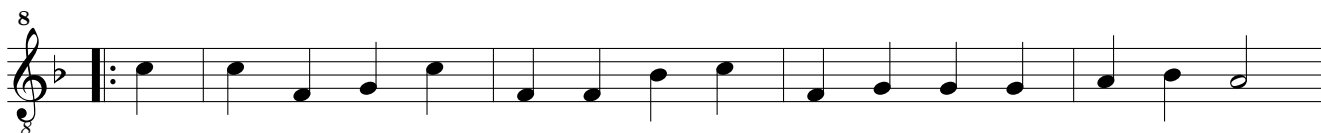
11



26. Courant



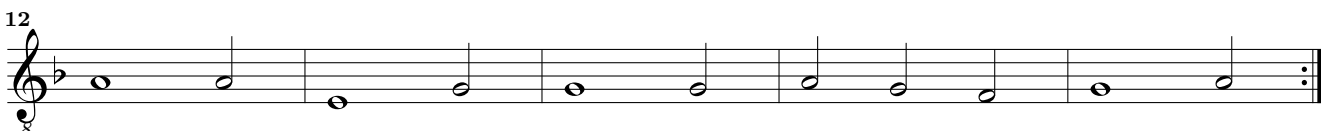
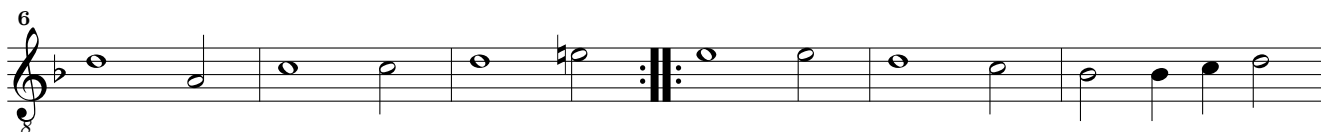
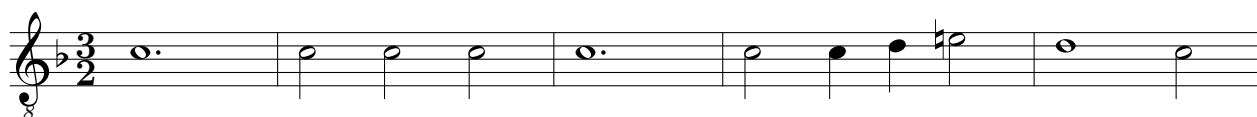
27. Alemanda *Studenten-Music – 29. Sarabanda – Tenor, G clef*



28. Ballo



29. Sarabanda



This page intentionally left blank.

30. Paduan

5

9

12

17

22

25

29

33

37

40

45

31. Alemanda

Musical score for 31. Alemanda, Tenor, G clef. The piece is in common time (C) and consists of three staves of music. The first staff contains the first six measures. The second staff contains measures 4 through 7. The third staff contains measures 8 through 12, ending with a double bar line and repeat sign. The key signature has one sharp (F#).

32. Courant

Musical score for 32. Courant, Tenor, G clef. The piece is in 3/2 time and consists of three staves of music. The first staff contains the first six measures. The second staff contains measures 5 through 9, ending with a double bar line and repeat sign. The third staff contains measures 10 through 16, ending with a double bar line and repeat sign. The key signature has one sharp (F#).

33. Ballo Allegro

Musical score for 33. Ballo Allegro, Tenor, G clef. The piece is in common time (C) and consists of two staves of music. The first staff contains the first six measures. The second staff contains measures 5 through 10, ending with a double bar line and repeat sign.

34. Sarabanda

Musical score for 34. Sarabanda, Tenor, G clef. The piece is in 3/2 time and consists of three staves of music. The first staff contains the first six measures. The second staff contains measures 6 through 11, ending with a double bar line and repeat sign. The third staff contains measures 12 through 17, ending with a double bar line and repeat sign. The key signature has one sharp (F#).

35. Paduan

The musical score for '35. Paduan' is written in G major (one sharp) and 4/4 time. It consists of 11 staves of music, with measure numbers 6, 11, 15, 20, 25, 29, 33, 37, 41, and 46 marked at the beginning of their respective staves. The piece begins with a treble clef, a common time signature (C), and a key signature of one sharp (F#). The melody is primarily composed of quarter and eighth notes, with some rests and ties. There are several repeat signs (double bar lines with dots) and a double bar line with repeat dots at the end of the piece. The final measure of the piece is marked with a double bar line and a repeat sign.

36. Alemanda

Musical score for 36. Alemanda, Tenor, G clef. The piece is in common time (C) and B-flat major. It consists of four staves. The first staff is the melody. The second staff is a counter-melody. The third and fourth staves are the bass line. The piece ends with a double bar line and repeat signs.

37. Courant

Musical score for 37. Courant, Tenor, G clef. The piece is in 3/2 time and B-flat major. It consists of four staves. The first staff is the melody. The second staff is a counter-melody. The third and fourth staves are the bass line. The piece ends with a double bar line and repeat signs.

38. Ballo Adagio

Musical score for 38. Ballo Adagio, Tenor, G clef. The piece is in common time (C) and B-flat major. It consists of four staves. The first staff is the melody. The second staff is a counter-melody. The third and fourth staves are the bass line. The piece ends with a double bar line and repeat signs.

39. Sarabanda

Musical score for 39. Sarabanda, Tenor, G clef. The piece is in 3/2 time and B-flat major. It consists of four staves. The first staff is the melody. The second staff is a counter-melody. The third and fourth staves are the bass line. The piece ends with a double bar line and repeat signs.

40. Paduan

7
12
17
22
26
29
34
38
42
46

41. Alemanda

Musical score for '41. Alemanda' in G major, common time (C). The piece consists of four staves of music. The first staff begins with a treble clef and a common time signature. The second staff starts at measure 4. The third staff starts at measure 7 and includes a repeat sign. The fourth staff starts at measure 12 and ends with a double bar line and repeat sign.

42. Courant

Musical score for '42. Courant' in G major, 3/2 time. The piece consists of three staves of music. The first staff begins with a treble clef and a 3/2 time signature. The second staff starts at measure 7. The third staff starts at measure 12 and includes a repeat sign. The fourth staff starts at measure 20 and ends with a double bar line and repeat sign.

43. Ballo

Musical score for '43. Ballo' in G major, common time (C). The piece consists of two staves of music. The first staff begins with a treble clef and a common time signature. The second staff starts at measure 5 and includes a repeat sign.

44. Sarabanda

Musical score for '44. Sarabanda' in G major, 3/2 time. The piece consists of three staves of music. The first staff begins with a treble clef and a 3/2 time signature. The second staff starts at measure 6 and includes a repeat sign. The third staff starts at measure 11 and ends with a double bar line and repeat sign.

45. Paduan

6

10

14

19

23

26

30

35

40

44

48

Musical score for 46. Alemanda, Tenor, G clef. The piece is in common time (C) and B-flat major. It consists of four staves. The first staff is the melody. The second staff is the accompaniment. The third and fourth staves are the continuation of the accompaniment. The piece ends with a double bar line and repeat signs.

47. Courant

Musical score for 47. Courant, Tenor, G clef. The piece is in 3/2 time and B-flat major. It consists of four staves. The first staff is the melody. The second staff is the accompaniment. The third and fourth staves are the continuation of the accompaniment. The piece ends with a double bar line and repeat signs.

48. Ballo *Adagio*

Musical score for 48. Ballo *Adagio*, Tenor, G clef. The piece is in common time (C) and B-flat major. It consists of four staves. The first staff is the melody. The second staff is the accompaniment. The third and fourth staves are the continuation of the accompaniment. The piece ends with a double bar line and repeat signs.

49. Sarabanda

Musical score for 49. Sarabanda, Tenor, G clef. The piece is in 3/2 time and B-flat major. It consists of four staves. The first staff is the melody. The second staff is the accompaniment. The third and fourth staves are the continuation of the accompaniment. The piece ends with a double bar line and repeat signs.

50. Paduan

6

11

17

22

26

30

35

39

43

46

49

Musical score for 51. Alemanda, Tenor, G clef. The piece is in 3/4 time and B-flat major. It consists of four staves of music. The first staff begins with a treble clef and a common time signature 'C'. The second staff starts at measure 4. The third staff starts at measure 7. The fourth staff starts at measure 11 and ends with a double bar line and repeat sign.

52. Courant

Musical score for 52. Courant, Tenor, G clef. The piece is in 3/2 time and B-flat major. It consists of four staves of music. The first staff begins with a treble clef and a 3/2 time signature. The second staff starts at measure 6. The third staff starts at measure 12. The fourth staff starts at measure 18 and ends with a double bar line and repeat sign.

53. Ballo *Adagio Adagio*

Musical score for 53. Ballo *Adagio Adagio*, Tenor, G clef. The piece is in 3/4 time and B-flat major. It consists of two staves of music. The first staff begins with a treble clef and a common time signature 'C'. The second staff starts at measure 5 and is marked *Allegro*. Both staves end with a double bar line and repeat sign.

54. Sarabanda

Musical score for 54. Sarabanda, Tenor, G clef. The piece is in 3/2 time and B-flat major. It consists of three staves of music. The first staff begins with a treble clef and a 3/2 time signature. The second staff starts at measure 6. The third staff starts at measure 11 and ends with a double bar line and repeat sign.

55. Paduan

The musical score for '55. Paduan' is written in G major (one sharp) and common time (C). It consists of 11 staves of music. The first staff begins with a treble clef, a key signature of one sharp (F#), and a common time signature (C). The melody is composed of quarter and eighth notes, with some rests. The piece features several repeat signs (double bar lines with dots) and a final double bar line with a repeat sign. The notation includes various rhythmic values and accidentals, such as sharps and naturals.

56. Alemanda

Studenten-Music – 57. Courant – Tenor, G clef

Musical score for '56. Alemanda' in G major, common time (C). The score consists of four staves of music. The first staff begins with a treble clef, a key signature of one sharp (F#), and a common time signature (C). The melody is written in a simple, rhythmic style. The second staff contains a repeat sign and a first ending. The third staff contains a second ending. The fourth staff concludes the piece with a final double bar line.

57. Courant

Musical score for '57. Courant' in G major, 3/2 time. The score consists of eight staves of music. The first staff begins with a treble clef, a key signature of one sharp (F#), and a 3/2 time signature. The melody is written in a simple, rhythmic style. The second staff contains a repeat sign and a first ending. The third staff contains a second ending. The fourth staff contains a third ending. The fifth staff contains a fourth ending. The sixth staff contains a fifth ending. The seventh staff contains a sixth ending. The eighth staff concludes the piece with a final double bar line.

58. Ballo

Studenten-Music – 60. Sarabanda – Tenor, G clef

Musical score for '58. Ballo' in G major, common time (C). The piece consists of four staves of music. The first staff begins with a treble clef, a key signature of one sharp (F#), and a common time signature (C). The melody is written in a simple, rhythmic style with quarter and eighth notes. The second staff ends with a repeat sign and a double bar line. The third staff begins with a repeat sign and a double bar line. The fourth staff ends with a repeat sign and a double bar line.

59. Courant

Musical score for '59. Courant' in G major, 3/2 time. The piece consists of five staves of music. The first staff begins with a treble clef, a key signature of one sharp (F#), and a 3/2 time signature. The melody is written in a simple, rhythmic style with quarter and eighth notes. The second staff ends with a repeat sign and a double bar line. The third staff begins with a repeat sign and a double bar line. The fourth staff ends with a repeat sign and a double bar line. The fifth staff ends with a repeat sign and a double bar line.

60. Sarabanda

Musical score for '60. Sarabanda' in G major, 3/2 time. The piece consists of four staves of music. The first staff begins with a treble clef, a key signature of one sharp (F#), and a 3/2 time signature. The melody is written in a simple, rhythmic style with quarter and eighth notes. The second staff ends with a repeat sign and a double bar line. The third staff begins with a repeat sign and a double bar line. The fourth staff ends with a repeat sign and a double bar line.