

Studenten-Music

Leipzig 1654

Johann Rosenmüller

c.1619 – 1684

Published by Johan Tufvesson.

Non-commercial copying welcome

Revision : 1.1

Studenten-Music

Leipzig 1654

Johann Rosenmüller

(c.1619–1684)

1. Paduan à 3

6

10

15

20

24

28

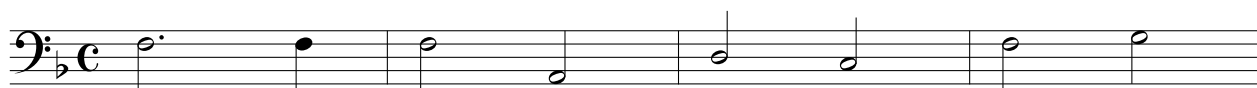
33

37

40

43

3. Paduan à 3



5



9



12



17



21



25



29



33



37



41



4. Paduan à 3

5

9

12

17

21

25

29

33

37

41

45

5. Paduan à 3



6



10



14



19



23



26



29



33



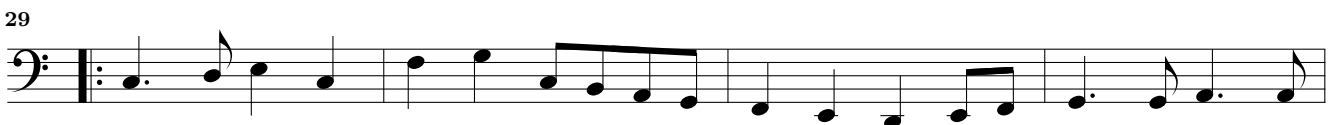
37



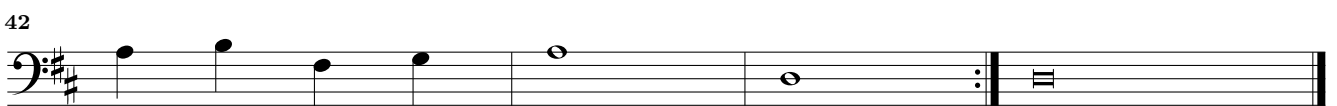
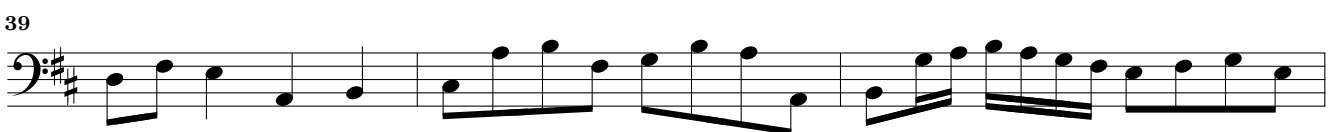
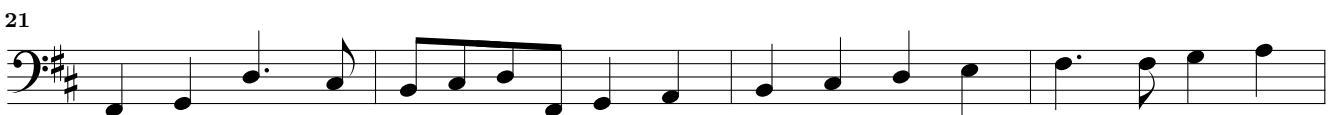
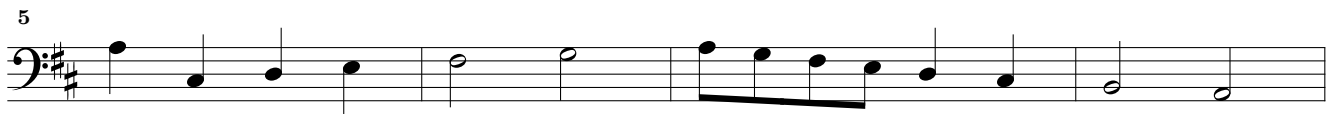
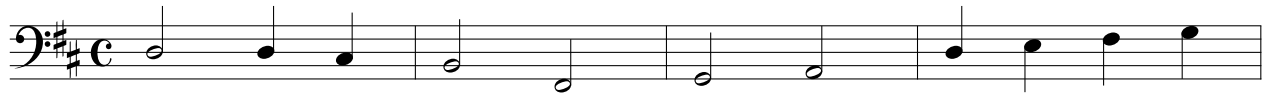
41



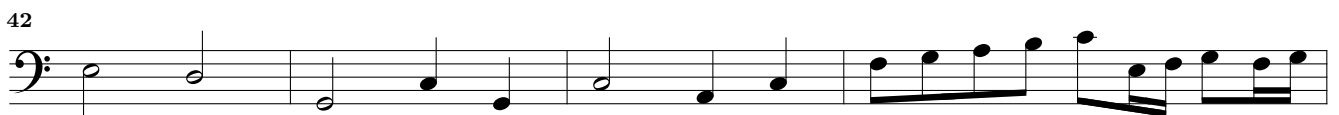
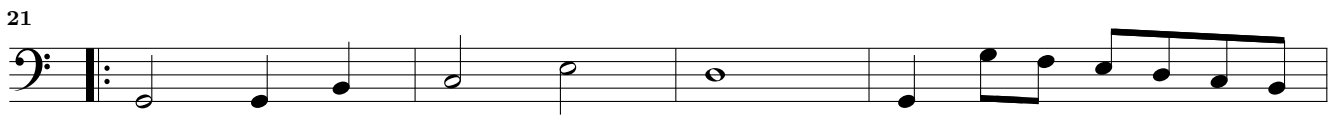
6. Paduan à 3



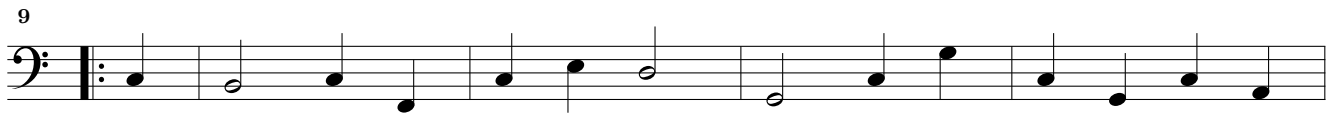
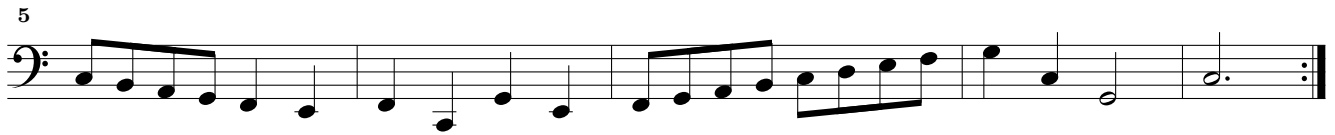
7. Paduan à 3



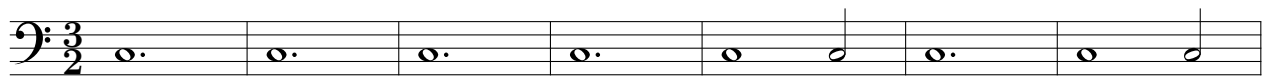
8. Paduan à 5



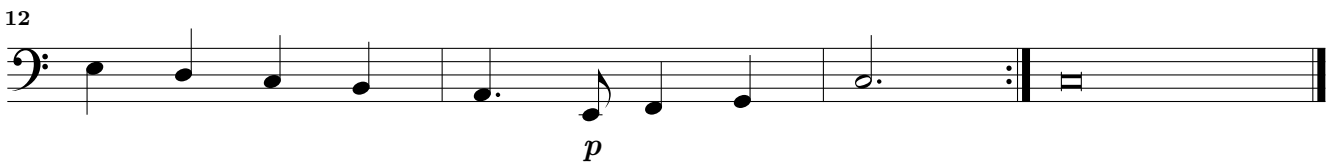
12. Alemanda



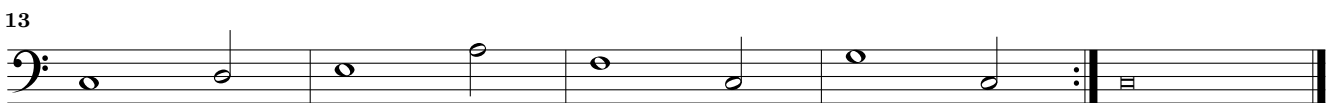
13. Courant



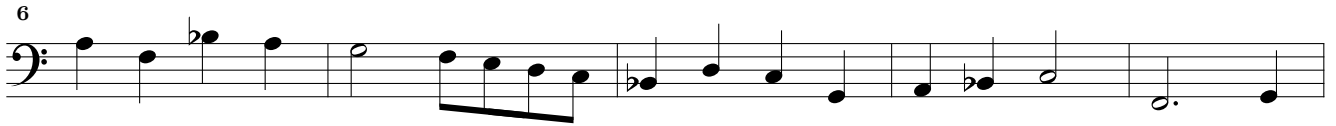
14. Ballo

*Adagio**Allegro*

15. Sarabanda



16. Paduan



17. Alemanda



5



8



12



16



18. Courant



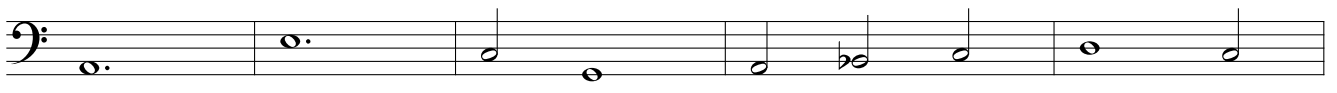
5



10

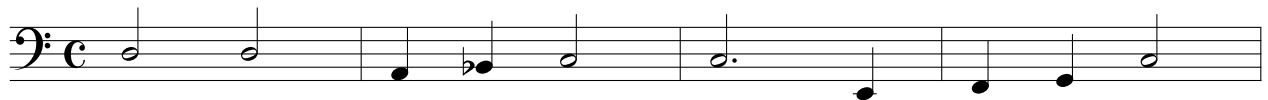


15

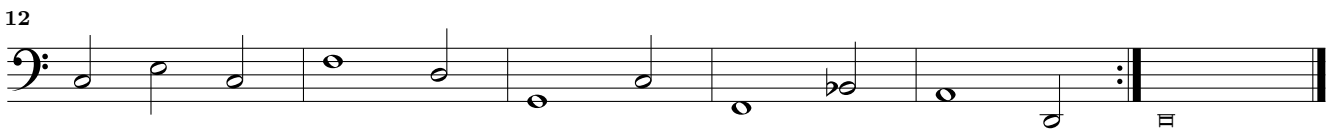
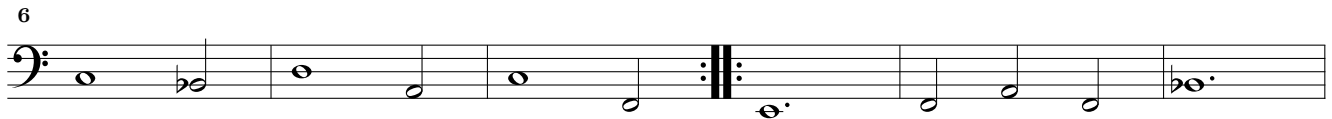


20





20. Sarabanda



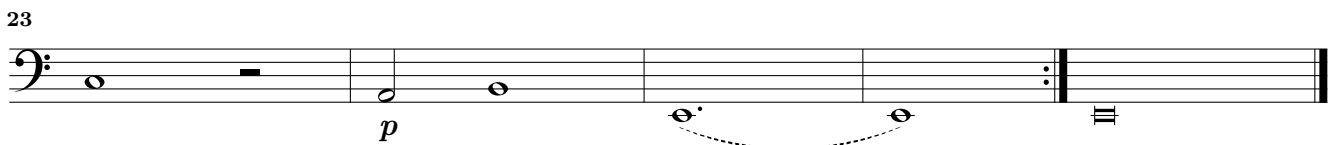
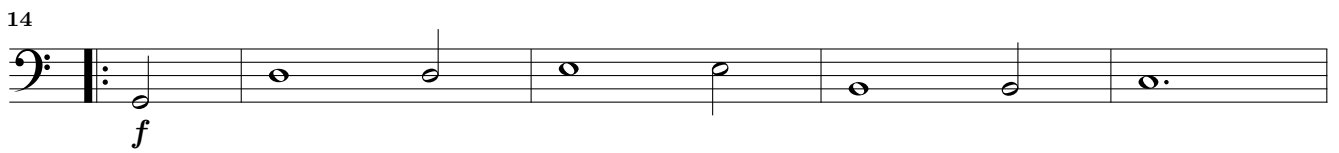
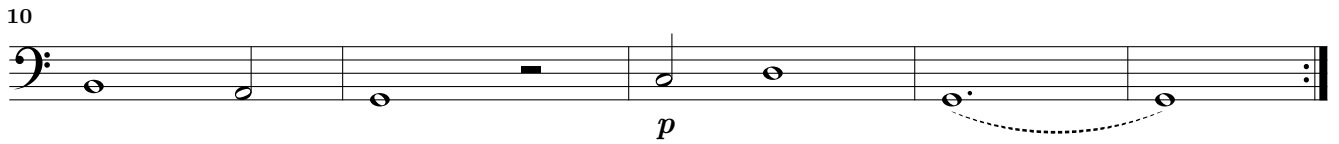
21. Paduan



22. Ballo



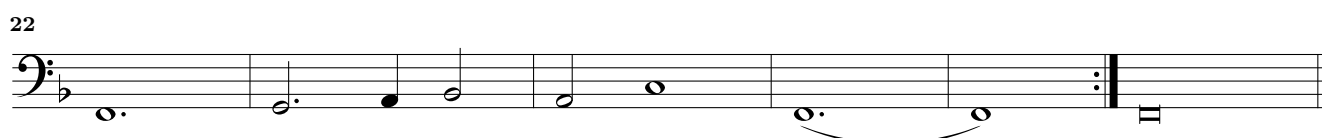
23. Courant



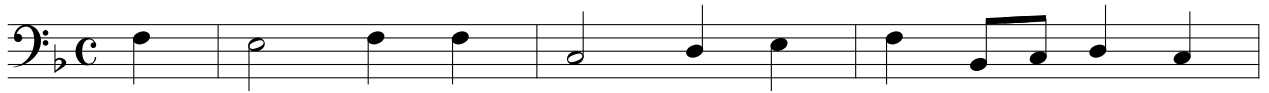
25. Alemanda



26. Courant



27. Alemanda

Studenten-Music – 29. Sarabanda – Bassus

4



8



13



28. Ballo



5



29. Sarabanda



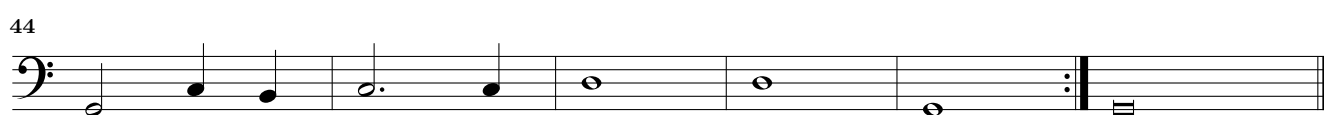
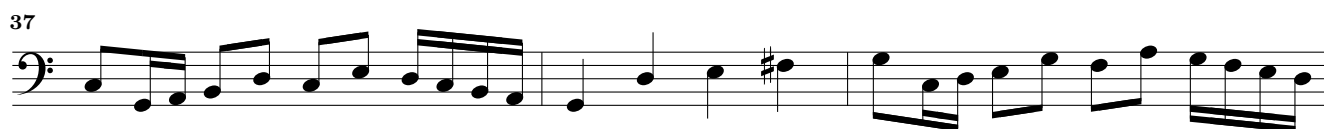
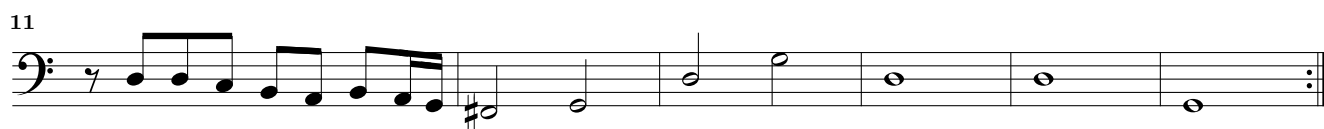
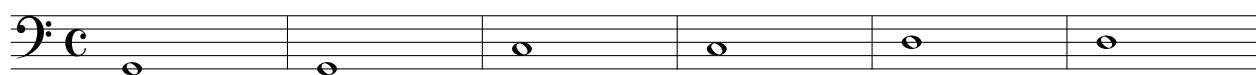
6



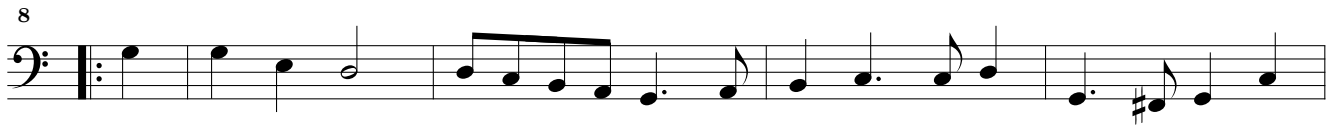
12



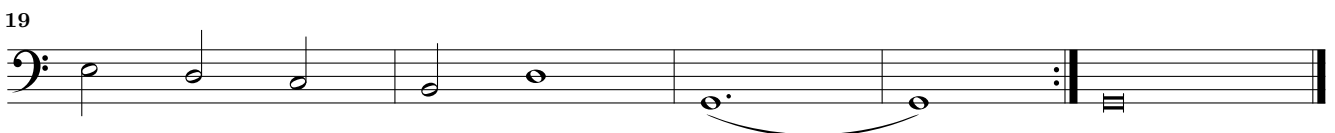
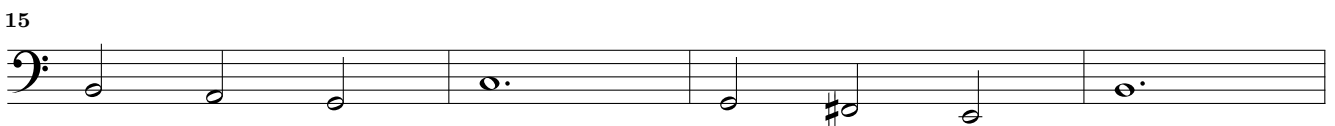
30. Paduan



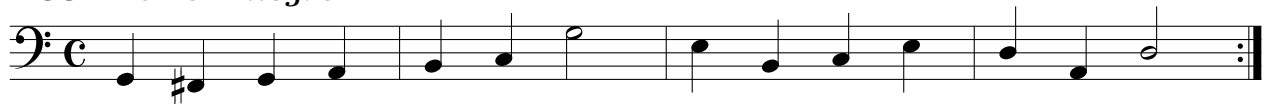
31. Alemanda



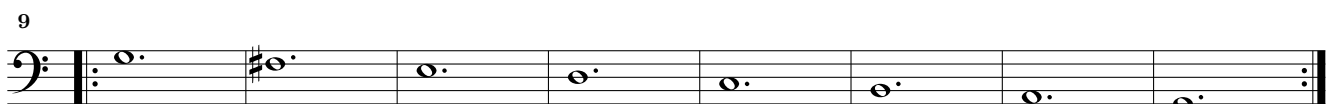
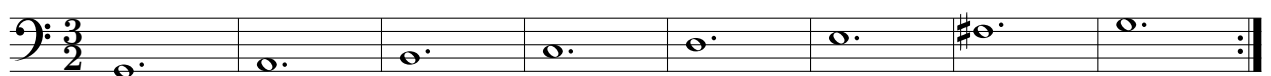
32. Courant



33. Ballo Allegro



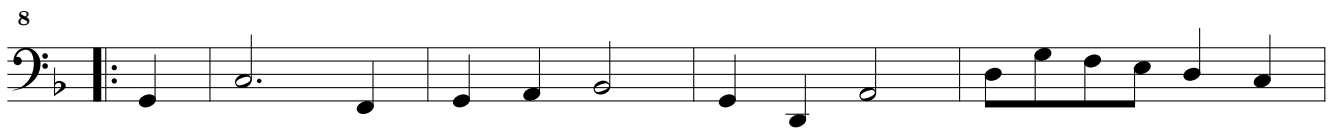
34. Sarabanda



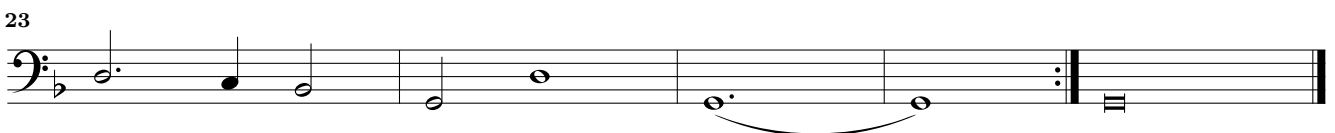
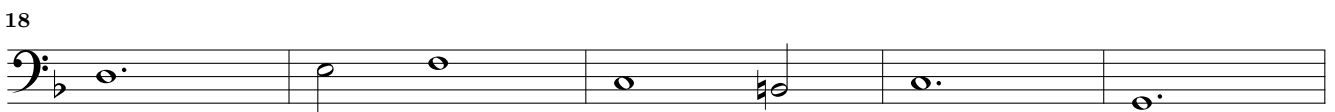
35. Paduan

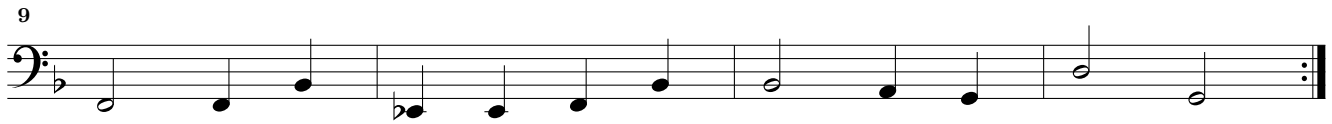
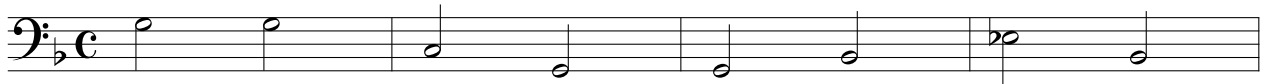


36. Alemanda

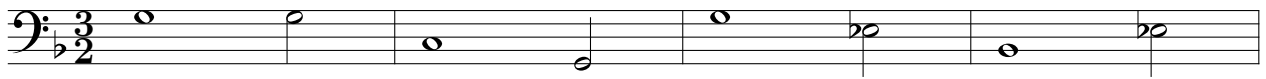


37. Courant

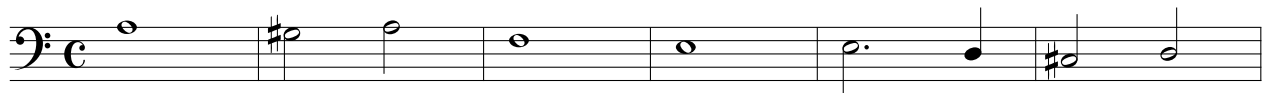




39. Sarabanda



40. Paduan



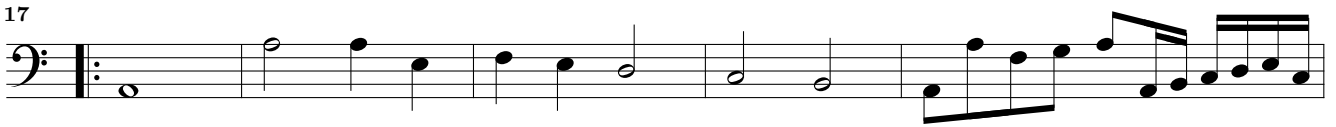
7



12



17



22



27



32



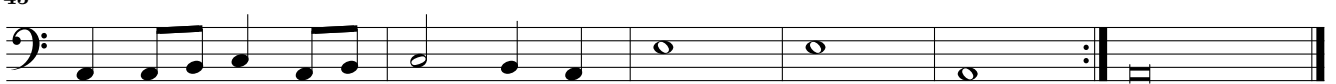
37



41



45



41. Alemanda



4



7

11

42. Courant

7

12

18

23

43. Ballo

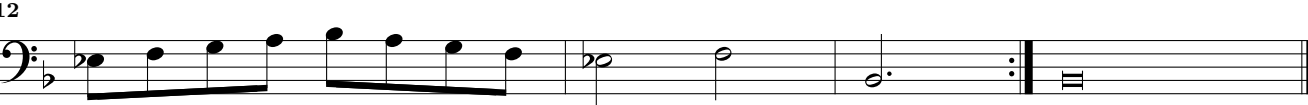
5

44. Sarabanda

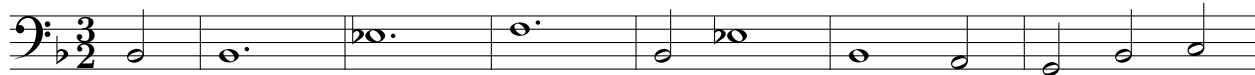
6

11

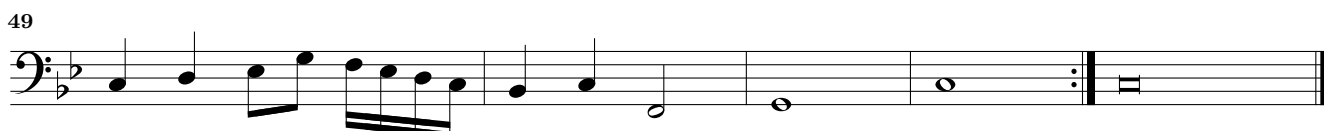
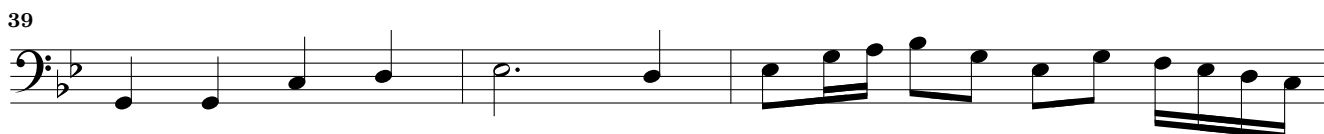
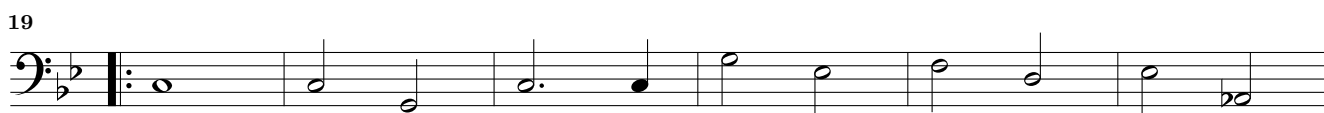
46. Alemanda



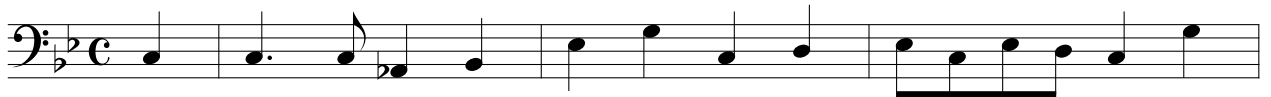
47. Courant



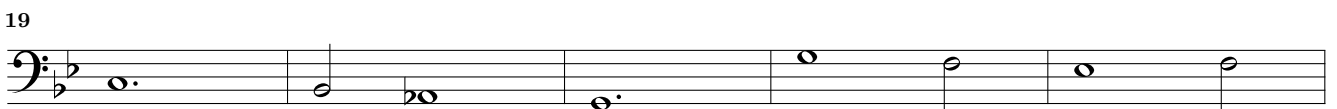
50. Paduan

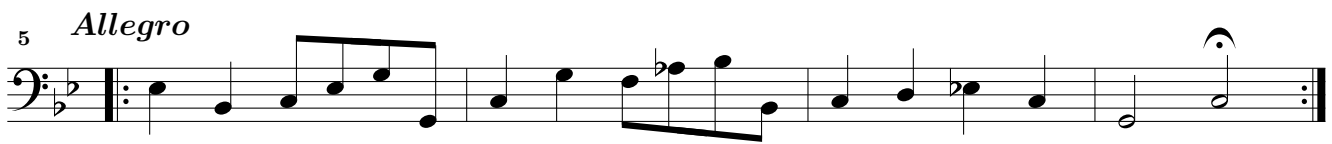
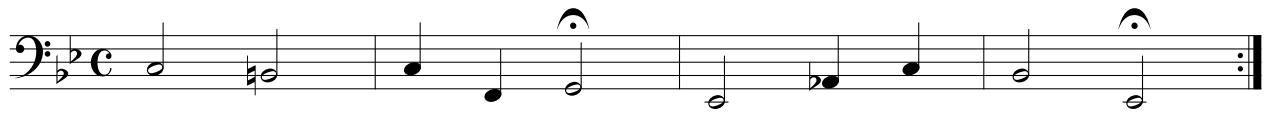


51. Alemanda

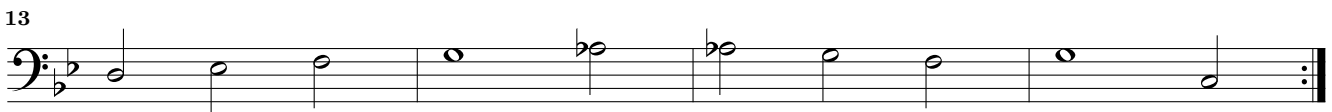
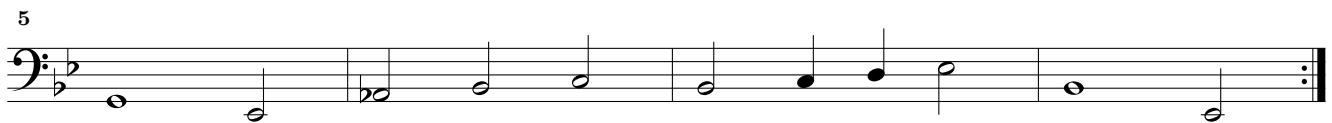
Studenten-Music - 52. Courant - Bassus

52. Courant





54. Sarabanda



55. Paduan

The musical score for '55. Paduan' is written in bass clef, 2/4 time, and the key of D major (two sharps). The piece consists of ten staves of music. The first staff begins with a common time signature 'C' which is quickly changed to 2/4. The melody is characterized by eighth and sixteenth notes, with some triplet patterns. There are several repeat signs throughout the piece, including a double bar line with repeat dots at the end of the fourth staff and another at the end of the tenth staff. The music concludes with a final double bar line and repeat dots.

56. Alemanda

Musical score for 56. Alemanda, Bassus. The score is written in bass clef with a key signature of one sharp (F#) and a common time signature (C). It consists of four staves of music. The first staff begins with a treble clef and a common time signature, followed by a bass clef. The music features a series of eighth and quarter notes, with some beamed eighth notes. The second staff continues the melody with a repeat sign at the end. The third staff starts with a repeat sign and includes a trill-like figure. The fourth staff concludes the piece with a repeat sign and a double bar line.

57. Courant

Musical score for 57. Courant, Bassus. The score is written in bass clef with a key signature of one sharp (F#) and a 3/2 time signature. It consists of seven staves of music. The first staff begins with a treble clef and a 3/2 time signature, followed by a bass clef. The music features a series of half notes. The second staff continues the melody with a repeat sign at the end. The third staff starts with a repeat sign and includes a trill-like figure. The fourth staff continues the melody with a repeat sign at the end. The fifth staff continues the melody with a repeat sign at the end. The sixth staff continues the melody with a repeat sign at the end. The seventh staff concludes the piece with a repeat sign and a double bar line.

58. Ballo

Musical score for '58. Ballo' in bass clef, 2/4 time, key of D major. It consists of four staves of music. The first staff starts with a treble clef and a common time signature 'C', then changes to a bass clef. The second staff ends with a repeat sign. The third staff starts with a repeat sign. The fourth staff ends with a repeat sign and a double bar line.

59. Courant

Musical score for '59. Courant' in bass clef, 3/2 time, key of D major. It consists of six staves of music. The first staff starts with a treble clef and a 3/2 time signature, then changes to a bass clef. The second staff ends with a repeat sign. The third staff starts with a repeat sign. The fourth staff ends with a repeat sign. The fifth staff ends with a repeat sign. The sixth staff ends with a repeat sign and a double bar line.

60. Sarabanda

Musical score for '60. Sarabanda' in bass clef, 3/2 time, key of D major. It consists of four staves of music. The first staff starts with a treble clef and a 3/2 time signature, then changes to a bass clef. The second staff ends with a repeat sign. The third staff starts with a repeat sign. The fourth staff ends with a repeat sign and a double bar line.