

Studenten-Music

Leipzig 1654

Johann Rosenmüller

c.1619 – 1684

Published by Johan Tufvesson.

Non-commercial copying welcome

Revision : 1.2

Altus, G clef

Studenten-Music

Leipzig 1654

Johann Rosenmüller

(c.1619–1684)

1-7 Paduan à 3

Tacet

8. Paduan à 5

The musical score for '8. Paduan à 5' is written in G-clef and common time (C). It consists of ten staves of music. The first staff begins with a treble clef and a common time signature. The music is characterized by a mix of eighth and sixteenth notes, often beamed together in groups. There are several repeat signs (double bar lines with dots) throughout the piece, indicating repeated rhythmic patterns. The key signature is one sharp (F#), and the time signature is common time (C). The score is divided into measures, with measure numbers 6, 11, 16, 21, 26, 29, 33, 37, 42, 47, and 51 marked at the beginning of their respective staves. The piece concludes with a final double bar line and a repeat sign.

9. Alemanda

Studenten-Music – 11. Courant – Altus, G clef

3

Musical score for '9. Alemanda' in G-clef, common time (C). The score consists of four staves. The first staff begins with a treble clef and a common time signature. The music is written in a single line. The second staff starts at measure 6. The third staff starts at measure 10. The fourth staff starts at measure 16. The piece concludes with a double bar line and repeat dots.

10. Courant *Adagio*

Musical score for '10. Courant Adagio' in G-clef, 3/2 time. The score consists of four staves. The first staff begins with a treble clef and a 3/2 time signature. The music is written in a single line. The second staff starts at measure 6. The third staff starts at measure 10. The fourth staff starts at measure 17. The piece concludes with a double bar line and repeat dots.

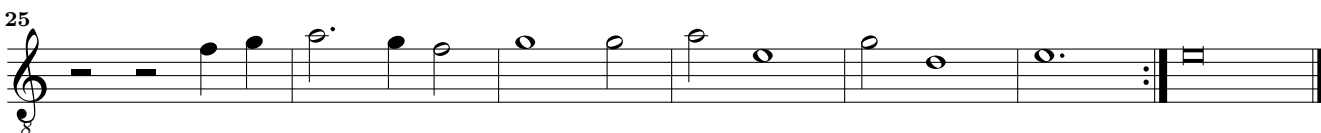
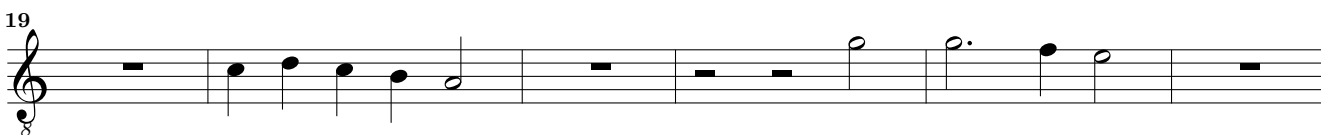
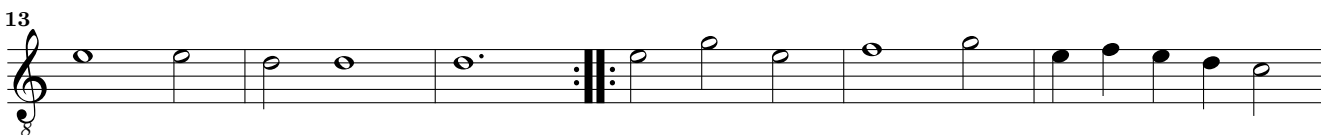
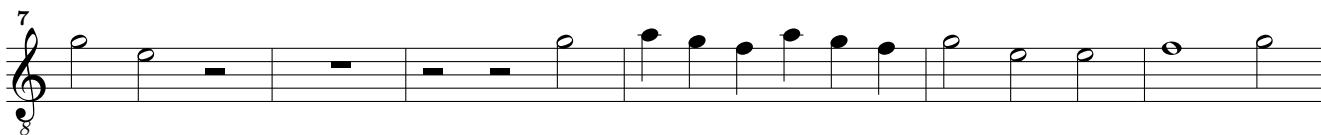
11. Courant *Allegro*

Musical score for '11. Courant Allegro' in G-clef, 3/2 time. The score consists of three staves. The first staff begins with a treble clef and a 3/2 time signature. The music is written in a single line. The second staff starts at measure 5. The third staff starts at measure 11. The piece concludes with a double bar line and repeat dots.

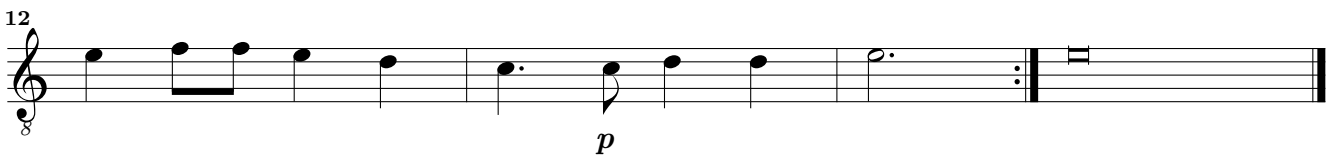
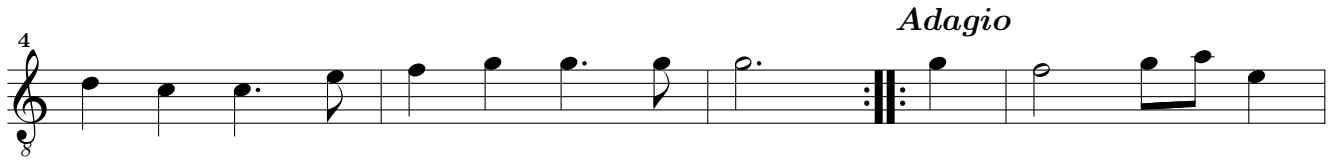
12. Alemanda

Studenten-Music – 13. Courant – Altus, G clef

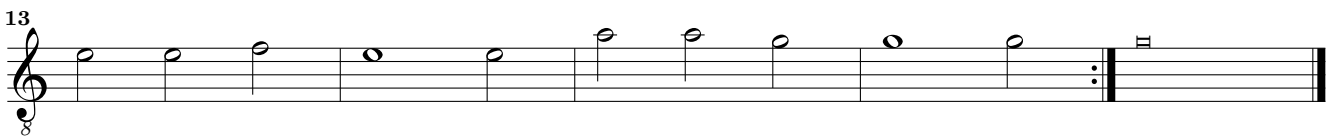
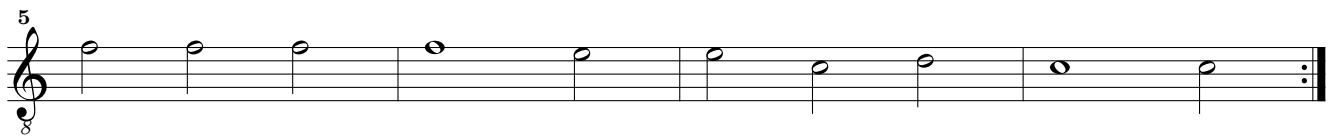
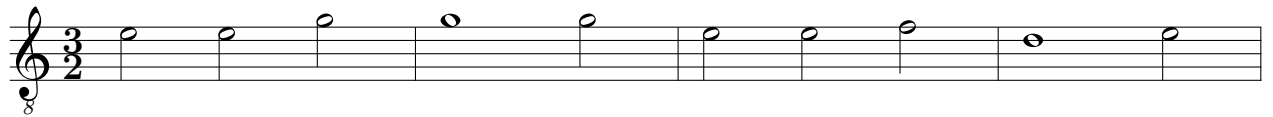
13. Courant



14. Ballo



15. Sarabanda



16. Paduan

The musical score for '16. Paduan' is written in treble clef with a common time signature (C). The piece consists of ten staves of music, each starting with a measure number. The notation includes various note values (quarter, eighth, and sixteenth notes), rests, and dynamic markings such as '8' (piano) and '7' (deciso). The score concludes with a double bar line and repeat dots.

6
12
17
23
27
32
37
43
48
53

17. Alemanda

Studenten-Music – 20. Sarabanda – Altus, G clef

7

Musical score for 17. Alemanda, featuring four staves of music in common time (C). The first staff is the treble clef. The second staff is the alto clef (6). The third and fourth staves are the bass clef (16). The piece concludes with a double bar line and a repeat sign.

18. Courant

Musical score for 18. Courant, featuring four staves of music in 3/2 time. The first staff is the treble clef. The second staff is the alto clef (6). The third and fourth staves are the bass clef (12 and 19). The piece concludes with a double bar line and a repeat sign.

19. Ballo Adagio

Musical score for 19. Ballo Adagio, featuring three staves of music in common time (C). The first staff is the treble clef. The second and third staves are the alto clef (5). The tempo marking *Allegro* is present above the second staff. The piece concludes with a double bar line and a repeat sign.

20. Sarabanda

Musical score for 20. Sarabanda, featuring three staves of music in 3/2 time. The first staff is the treble clef. The second and third staves are the alto clef (7 and 13). The piece concludes with a double bar line and a repeat sign.

21. Paduan

The musical score for '21. Paduan' is written in treble clef with a common time signature (C). The piece consists of ten staves of music, each starting with a measure number. The key signature is one sharp (F#). The notation includes various note values (quarter, eighth, and sixteenth notes), rests, and dynamic markings. The score concludes with a double bar line and repeat dots.

7
12
17
21
25
28
33
39
44

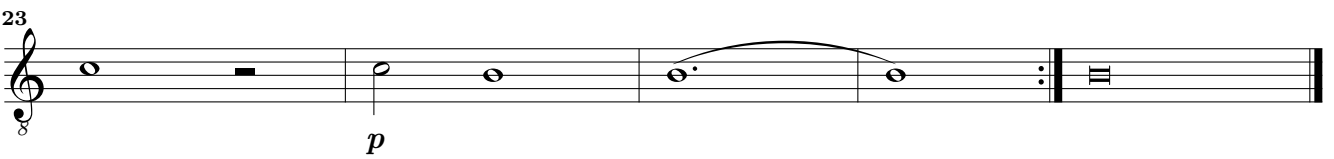
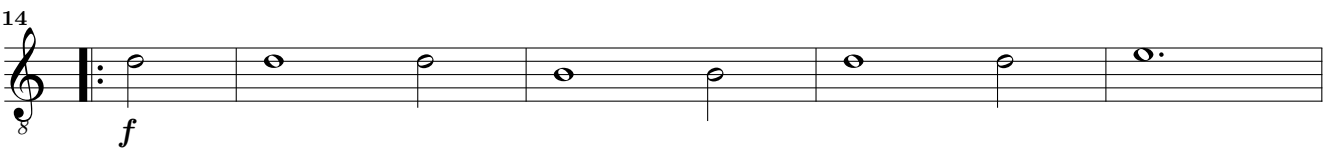
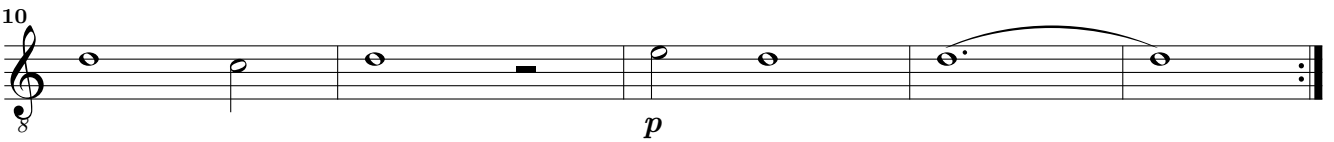
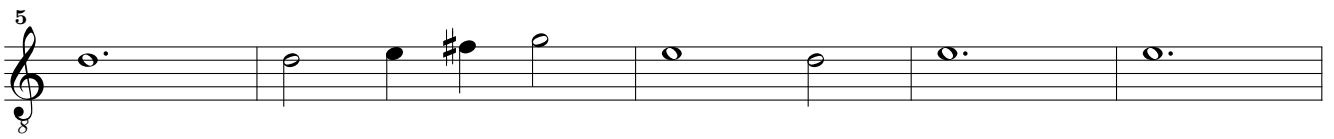
22. Ballo

Studenten-Music – 23. Courant – Altus, G clef

9



23. Courant



24. Paduan

6

10

14

19

24

28

32

37

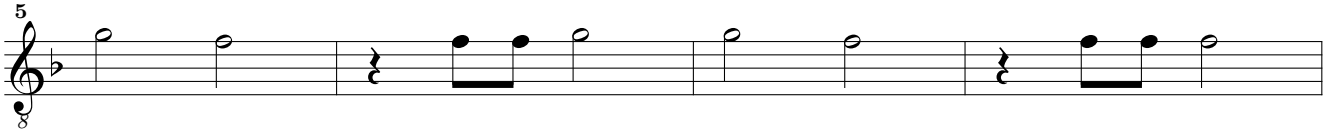
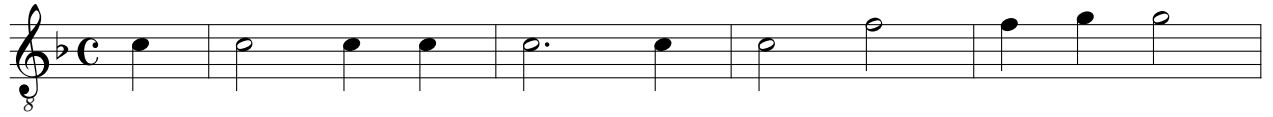
42

47

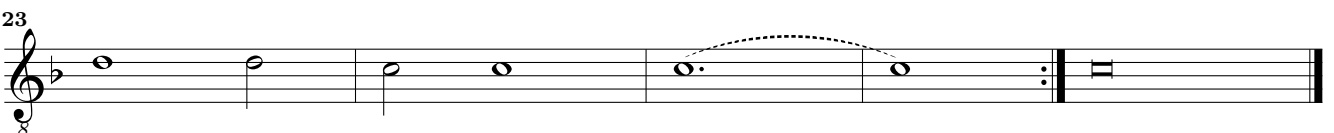
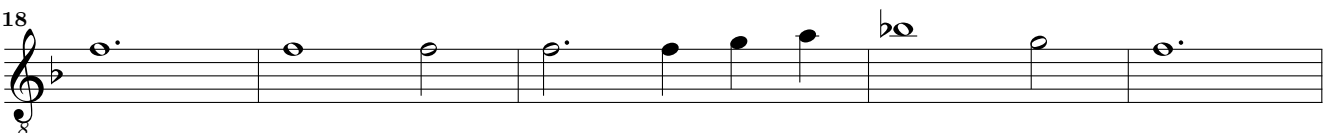
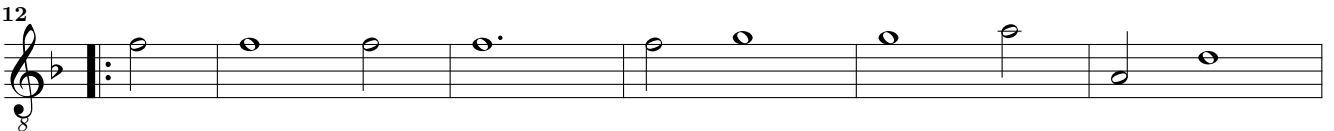
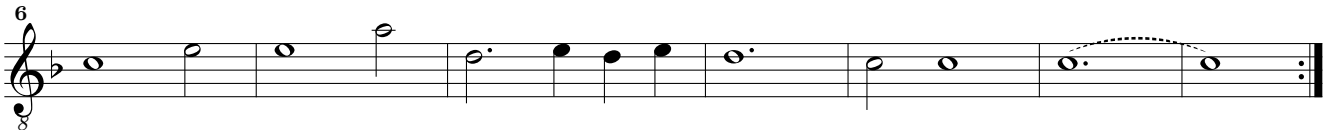
52

25. Alemanda

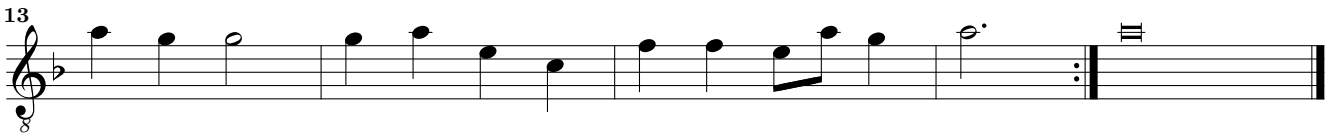
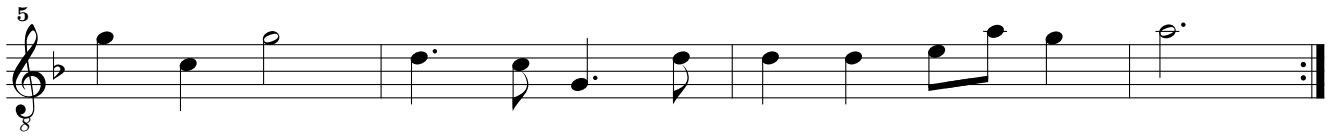
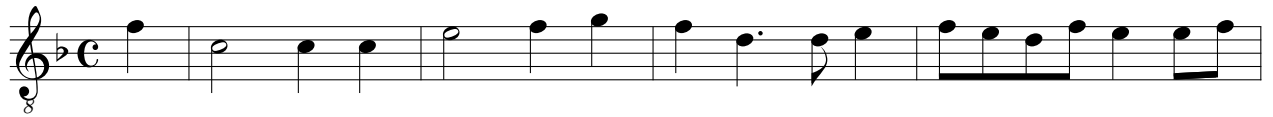
Studenten-Music – 26. Courant – Altus, G clef



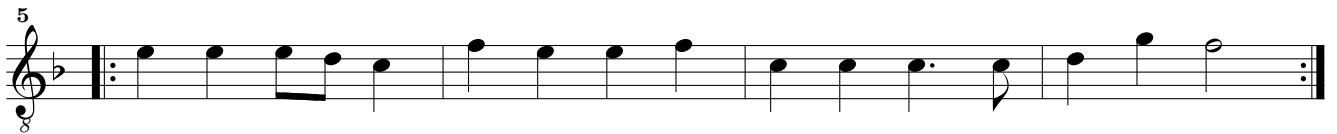
26. Courant



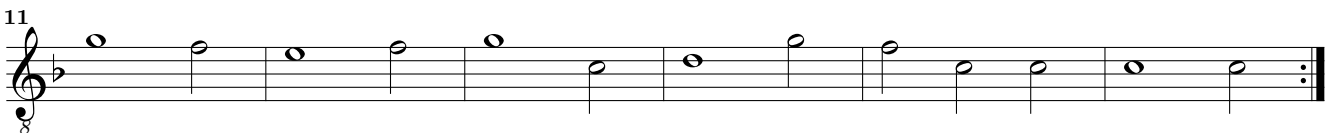
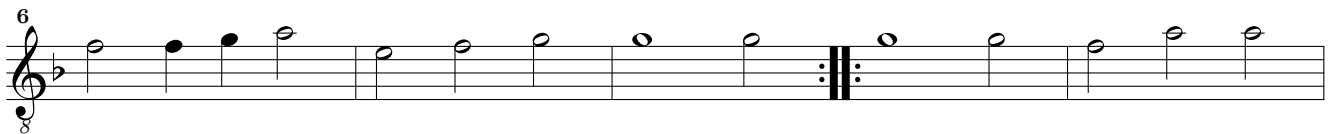
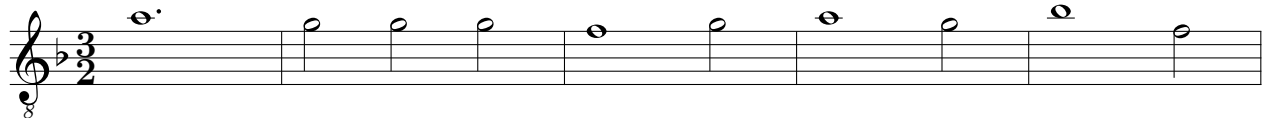
27. Alemanda

Studenten-Music – 29. Sarabanda – Altus, G clef

28. Ballo



29. Sarabanda



This page intentionally left blank.

30. Paduan

The image displays a musical score for a piece titled "30. Paduan". The score is written in a single staff using a treble clef and a common time signature (C). The key signature is one sharp (F#), indicating the key of D major. The score is divided into measures, with measure numbers 5, 9, 13, 17, 21, 25, 29, 33, 38, 42, and 45 marked at the beginning of their respective lines. The music consists of a series of notes, including quarter, eighth, and sixteenth notes, with some measures containing rests. The piece concludes with a double bar line and repeat dots at the end of the final measure.

31. Alemanda

Musical score for 31. Alemanda, Altus, G clef, common time (C). The score consists of four staves. The first staff begins with a treble clef and a common time signature. The second staff starts at measure 4. The third staff starts at measure 8 and includes a repeat sign. The fourth staff starts at measure 13 and ends with a double bar line and repeat sign.

32. Courant

Musical score for 32. Courant, Altus, G clef, 3/2 time. The score consists of four staves. The first staff begins with a treble clef and a 3/2 time signature. The second staff starts at measure 5. The third staff starts at measure 10 and includes a repeat sign. The fourth staff starts at measure 17 and ends with a double bar line and repeat sign.

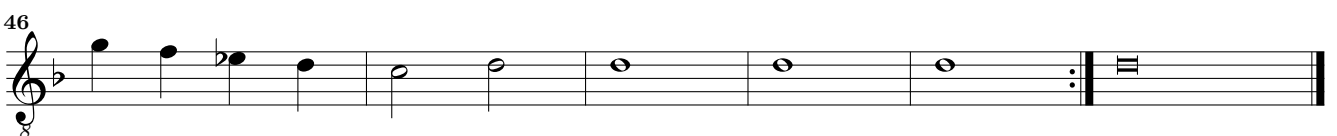
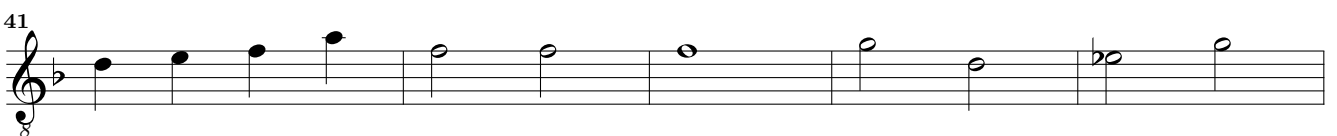
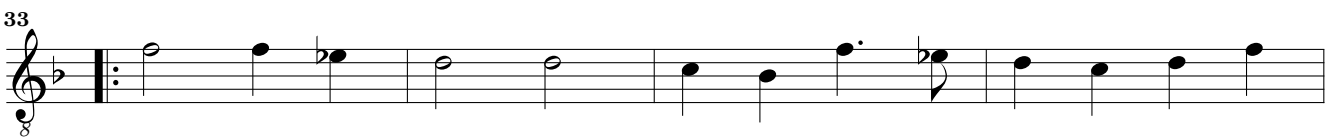
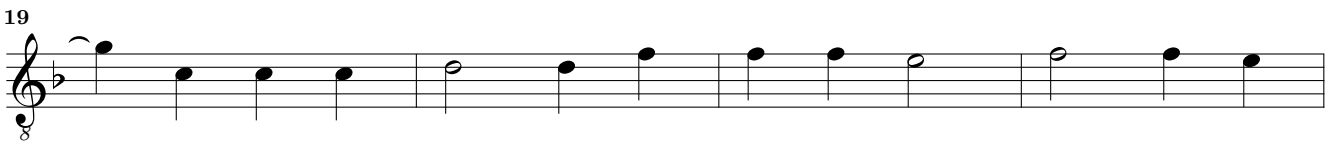
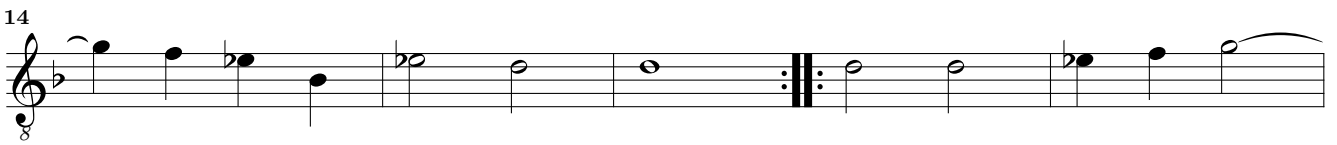
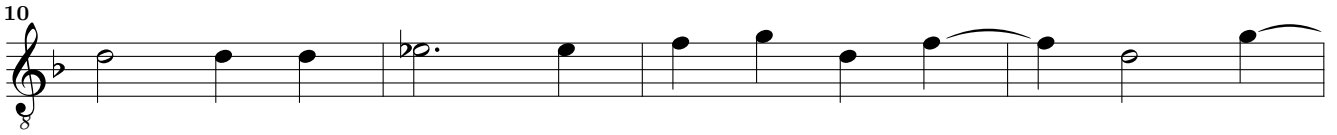
33. Ballo Allegro

Musical score for 33. Ballo Allegro, Altus, G clef, common time (C). The score consists of two staves. The first staff begins with a treble clef and a common time signature. The second staff starts at measure 5 and includes a repeat sign.

34. Sarabanda

Musical score for 34. Sarabanda, Altus, G clef, 3/2 time. The score consists of three staves. The first staff begins with a treble clef and a 3/2 time signature. The second staff starts at measure 6 and includes a repeat sign. The third staff starts at measure 11 and ends with a double bar line and repeat sign.

35. Paduan



Musical score for 36. Alemanda, Altus, G clef, common time (C). The score consists of four staves. The first staff is the melody. The second staff is a four-measure rest. The third staff is a bass line. The fourth staff is a bass line with a double bar line and repeat sign at the end.

37. Courant

Musical score for 37. Courant, Altus, G clef, 3/2 time. The score consists of three staves. The first staff is the melody. The second staff is a six-measure rest. The third staff is a bass line with a double bar line and repeat sign at the end.

38. Ballo *Adagio*

Musical score for 38. Ballo *Adagio*, Altus, G clef, common time (C). The score consists of three staves. The first staff is the melody. The second staff is a five-measure rest. The third staff is a bass line with a double bar line and repeat sign at the end.

39. Sarabanda

Musical score for 39. Sarabanda, Altus, G clef, 3/2 time. The score consists of three staves. The first staff is the melody. The second staff is a six-measure rest. The third staff is a bass line with a double bar line and repeat sign at the end.

40. Paduan

8

12

17

21

25

29

34

38

42

45

Musical score for 41. Alemanda, Altus, G clef. The piece is in common time (C) and consists of four staves of music. The first staff begins with a treble clef and a common time signature. The second staff starts at measure 4, the third at measure 7, and the fourth at measure 11. The piece concludes with a double bar line and repeat dots.

42. Courant

Musical score for 42. Courant, Altus, G clef. The piece is in 3/2 time and consists of three staves of music. The first staff begins with a treble clef and a 3/2 time signature. The second staff starts at measure 7, and the third at measure 12. The piece concludes with a double bar line and repeat dots.

43. Ballo

Musical score for 43. Ballo, Altus, G clef. The piece is in common time (C) and consists of two staves of music. The first staff begins with a treble clef and a common time signature. The second staff starts at measure 5. The piece concludes with a double bar line and repeat dots.

44. Sarabanda

Musical score for 44. Sarabanda, Altus, G clef. The piece is in 3/2 time and consists of three staves of music. The first staff begins with a treble clef and a 3/2 time signature. The second staff starts at measure 6, and the third at measure 11. The piece concludes with a double bar line and repeat dots.

45. Paduan

The image displays a musical score for a piece titled "45. Paduan". The score is written in a single system on a grand staff (treble clef), with a key signature of one flat (B-flat) and a common time signature (C). The piece consists of 48 measures, organized into 12 staves of 4 measures each. The notation includes various rhythmic values such as quarter, eighth, and sixteenth notes, as well as rests and accidentals. The score begins with a treble clef, a key signature of one flat, and a common time signature. The first measure starts with a quarter rest, followed by a quarter note G4, a quarter note A4, and a quarter note B4. The piece concludes with a double bar line and repeat dots at the end of the 48th measure.

Musical score for 46. Alemanda, Altus, G clef. The piece is in common time (C) and G minor. It consists of four staves of music. The first staff begins with a treble clef and a common time signature. The second staff starts with a measure rest and a measure number '4'. The third staff starts with a measure rest and a measure number '7'. The fourth staff starts with a measure rest and a measure number '11'. The piece concludes with a double bar line and repeat dots.

47. Courant

Musical score for 47. Courant, Altus, G clef. The piece is in 3/2 time and G minor. It consists of three staves of music. The first staff begins with a treble clef and a 3/2 time signature. The second staff starts with a measure rest and a measure number '7'. The third staff starts with a measure rest and a measure number '12'. The piece concludes with a double bar line and repeat dots.

48. Ballo Adagio

Musical score for 48. Ballo Adagio, Altus, G clef. The piece is in common time (C) and G minor. It consists of three staves of music. The first staff begins with a treble clef and a common time signature. The second staff starts with a measure rest and a measure number '5'. The tempo marking *Allegro* is placed above the second staff. The third staff starts with a measure rest and a measure number '9'. The piece concludes with a double bar line and repeat dots.

49. Sarabanda

Musical score for 49. Sarabanda, Altus, G clef. The piece is in 3/2 time and G minor. It consists of three staves of music. The first staff begins with a treble clef and a 3/2 time signature. The second staff starts with a measure rest and a measure number '6'. The third staff starts with a measure rest and a measure number '12'. The piece concludes with a double bar line and repeat dots.

50. Paduan

6

11

16

21

25

30

35

39

43

46

49

Musical score for 51. Alemanda, featuring four staves of music in G major (one flat) and common time (C). The first staff contains the main melody. The second staff has a measure rest of 4 measures. The third staff has a measure rest of 7 measures. The fourth staff has a measure rest of 11 measures. The piece concludes with a double bar line and repeat dots.

52. Courant

Musical score for 52. Courant, featuring four staves of music in G major (one flat) and 3/2 time. The first staff contains the main melody. The second staff has a measure rest of 5 measures. The third staff has a measure rest of 11 measures. The fourth staff has a measure rest of 17 measures. The piece concludes with a double bar line and repeat dots.

53. Ballo *Adagio Adagio*

Musical score for 53. Ballo, featuring two staves of music in G major (one flat) and common time (C). The first staff contains the main melody. The second staff is marked *Allegro* and contains a more rhythmic melody. The piece concludes with a double bar line and repeat dots.

54. Sarabanda

Musical score for 54. Sarabanda, featuring two staves of music in G major (one flat) and 3/2 time. The first staff contains the main melody. The second staff has a measure rest of 6 measures. The piece concludes with a double bar line and repeat dots.

55. Paduan

The musical score for "55. Paduan" is written in G major (one sharp) and common time (C). It consists of ten staves of music in treble clef. The notation includes various note values such as quarter, eighth, and sixteenth notes, as well as rests and repeat signs. The piece concludes with a double bar line and repeat dots.

56. Alemanda

Studenten-Music – 57. Courant – Altus, G clef

Musical score for '56. Alemanda' in G major, common time (C). The score consists of four staves of music. The first staff begins with a treble clef, a key signature of one sharp (F#), and a common time signature (C). The melody is written in a single line. The second staff contains a first ending with a repeat sign and a double bar line. The third staff contains a second ending with a repeat sign and a double bar line. The fourth staff concludes the piece with a repeat sign and a double bar line.

57. Courant

Musical score for '57. Courant' in G major, 3/2 time. The score consists of seven staves of music. The first staff begins with a treble clef, a key signature of one sharp (F#), and a 3/2 time signature. The melody is written in a single line. The second staff contains a first ending with a repeat sign and a double bar line. The third staff contains a second ending with a repeat sign and a double bar line. The fourth staff contains a third ending with a repeat sign and a double bar line. The fifth staff contains a fourth ending with a repeat sign and a double bar line. The sixth staff contains a fifth ending with a repeat sign and a double bar line. The seventh staff concludes the piece with a repeat sign and a double bar line.

58. Ballo

Studenten-Music – 60. Sarabanda – Altus, G clef

Musical score for '58. Ballo' in G major, common time (C). The piece consists of four staves of music. The first staff begins with a treble clef, a key signature of one sharp (F#), and a common time signature (C). The melody is written in a simple, rhythmic style with quarter and eighth notes. The second staff continues the melody with a repeat sign at the end. The third staff starts with a repeat sign and continues the melody. The fourth staff concludes the piece with a final cadence and a repeat sign.

59. Courant

Musical score for '59. Courant' in G major, 3/2 time. The piece consists of five staves of music. The first staff begins with a treble clef, a key signature of one sharp (F#), and a 3/2 time signature. The melody is written in a simple, rhythmic style with quarter notes. The second staff continues the melody with a repeat sign at the end. The third staff starts with a repeat sign and continues the melody. The fourth staff continues the melody with a repeat sign at the end. The fifth staff concludes the piece with a final cadence and a repeat sign.

60. Sarabanda

Musical score for '60. Sarabanda' in G major, 3/2 time. The piece consists of four staves of music. The first staff begins with a treble clef, a key signature of one sharp (F#), and a 3/2 time signature. The melody is written in a simple, rhythmic style with quarter notes. The second staff continues the melody with a repeat sign at the end. The third staff starts with a repeat sign and continues the melody. The fourth staff concludes the piece with a final cadence and a repeat sign.