

PADUANEN,
Alemanden, Couranten,
Balletten, Sarabanden

Mit drei Stimmen und Basso pro Organo

Leipzig 1645

Johann Rosenmüller
1619 – 1684

Published by Johan Tufvesson.

Non-commercial copying welcome

Revision : 1.1

Paduanen, Alemanden, Couranten, Balletten, Sarabanden

Johann Rosenmüller (1619–1684)

1. Paduana

4

7

11

15

18

21

25

29

33

36

39

41

2. Alemanda

Musical score for 2. Alemanda, consisting of three staves of music in treble clef and common time. The first staff contains the initial melody. The second staff begins at measure 4 and ends with a repeat sign. The third staff begins at measure 8 and ends with a repeat sign.

3. Courant

Musical score for 3. Courant, consisting of three staves of music in treble clef and 3/4 time. The first staff contains the initial melody. The second staff begins at measure 6 and ends with a repeat sign. The third staff begins at measure 12 and ends with a repeat sign.

4. Ballet

Musical score for 4. Ballet, consisting of two staves of music in treble clef and common time. The first staff contains the initial melody. The second staff begins at measure 5 and ends with a repeat sign.

5. Sarabanda

Musical score for 5. Sarabanda, consisting of three staves of music in treble clef and 3/4 time. The first staff contains the initial melody. The second staff begins at measure 6 and ends with a repeat sign. The third staff begins at measure 11 and ends with a repeat sign.

6. Paduana

The image displays a musical score for a piece titled "6. Paduana" from "Cantus I". The score is written in a single system on a grand staff (treble clef) and consists of 45 measures. The key signature is one flat (B-flat), and the time signature is common time (C). The notation includes various rhythmic values such as eighth, sixteenth, and quarter notes, as well as rests and accidentals. The score is divided into measures, with measure numbers 5, 8, 13, 17, 21, 25, 29, 33, 36, 39, and 42 marked at the beginning of their respective lines. The piece concludes with a double bar line and repeat signs.

7. Alemanda

Musical score for '7. Alemanda' in C major, 4/4 time. The score consists of three staves. The first staff contains the first four measures. The second staff starts at measure 4 and includes a first ending bracket. The third staff starts at measure 8 and includes a second ending bracket.

8. Courant

Musical score for '8. Courant' in C major, 3/4 time. The score consists of three staves. The first staff contains the first six measures. The second staff starts at measure 6 and includes a first ending bracket. The third staff starts at measure 12 and includes a second ending bracket.

9. Ballet

Musical score for '9. Ballet' in C major, 4/4 time. The score consists of three staves. The first staff contains the first four measures. The second staff starts at measure 4 and includes a first ending bracket. The third staff starts at measure 8 and includes a second ending bracket.

10. Sarabanda

Cantus I

Musical score for Sarabanda Cantus I, measures 1-12. The piece is in 3/4 time and D minor. The notation includes a treble clef, a key signature of one flat, and a time signature of 3/4. The melody consists of eighth and quarter notes, with a repeat sign at measure 6.

11. Paduana

Musical score for Paduana, measures 1-43. The piece is in 3/4 time and D major. The notation includes a treble clef, a key signature of two sharps, and a time signature of 3/4. The melody features a mix of eighth, quarter, and half notes, with several repeat signs and a double bar line at the end.

12. Alemanda

Musical score for 12. Alemanda, consisting of three staves of music in G major and common time. The first staff shows the beginning of the piece. The second staff starts at measure 4 and ends with a repeat sign. The third staff starts at measure 8 and ends with a repeat sign.

13. Courant

Musical score for 13. Courant, consisting of three staves of music in G major and 3/4 time. The first staff shows the beginning of the piece. The second staff starts at measure 5 and ends with a repeat sign. The third staff starts at measure 10 and ends with a repeat sign.

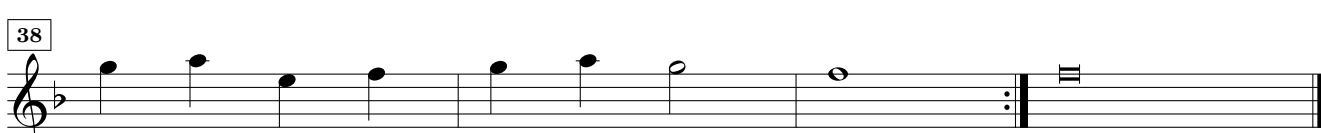
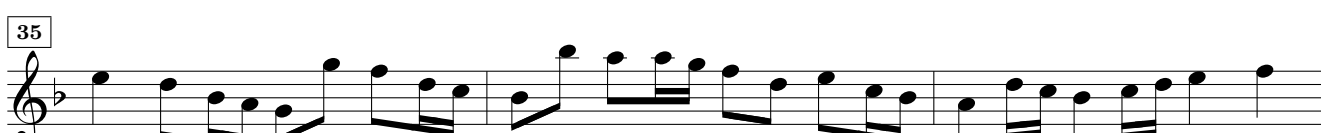
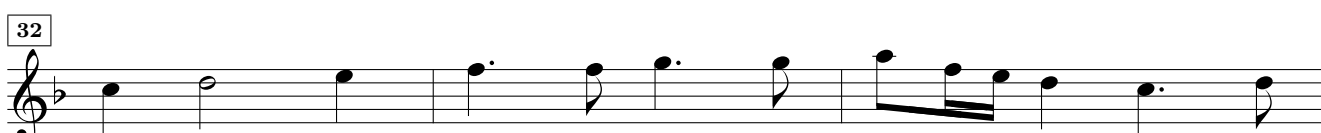
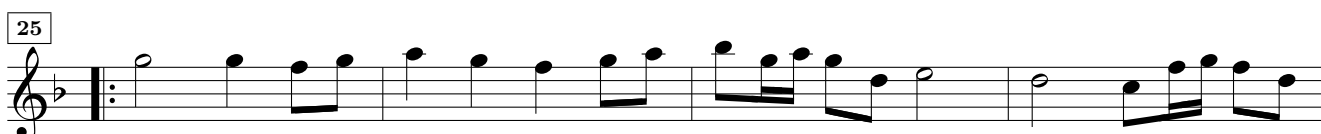
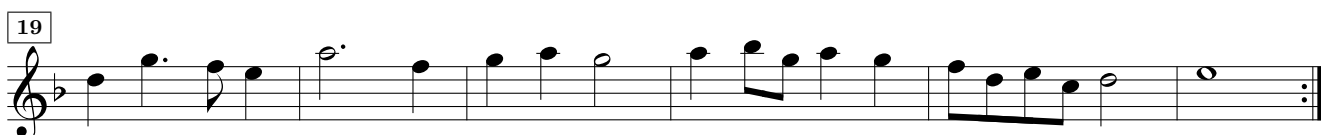
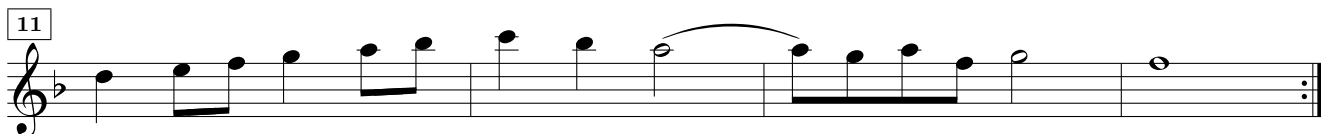
14. Ballet

Musical score for 14. Ballet, consisting of two staves of music in G major and common time. The first staff shows the beginning of the piece. The second staff starts at measure 5 and ends with a repeat sign.

15. Sarabanda

Musical score for 15. Sarabanda, consisting of three staves of music in G major and common time. The first staff shows the beginning of the piece. The second staff starts at measure 6 and ends with a repeat sign. The third staff starts at measure 12 and ends with a repeat sign.

16. Paduana



17. Alemanda

Musical score for 17. Alemanda, consisting of four staves of music in G minor (one flat) and common time. The first staff begins with a treble clef and a common time signature. The second staff is marked with a '4' at the beginning. The third staff is marked with a '7' at the beginning. The fourth staff is marked with an '11' at the beginning. The piece concludes with a double bar line and repeat dots.

18. Courant

Musical score for 18. Courant, consisting of four staves of music in G minor (one flat) and 3/4 time. The first staff begins with a treble clef and a 3/4 time signature. The second staff is marked with a '6' at the beginning. The third staff is marked with a '12' at the beginning. The fourth staff is marked with a '19' at the beginning. The piece concludes with a double bar line and repeat dots.

19. Ballet

Musical score for 19. Ballet, consisting of four staves of music in G minor (one flat) and common time. The first staff begins with a treble clef and a common time signature. The second staff is marked with a '3' at the beginning. The third staff is marked with a '6' at the beginning. The fourth staff is marked with a '10' at the beginning. The piece concludes with a double bar line and repeat dots.

20. Sarabanda

Musical score for Sarabanda, Cantus I, measures 1-12. The piece is in 3/4 time and B-flat major. The notation consists of three staves. The first staff (measures 1-6) begins with a treble clef and a 3/4 time signature. The second staff (measures 7-12) contains a repeat sign at the end of measure 6. The third staff (measures 13-18) concludes the piece with a double bar line.

21. Alemanda

Musical score for Alemanda, Cantus I, measures 1-12. The piece is in 4/4 time and B-flat major. The notation consists of three staves. The first staff (measures 1-7) begins with a treble clef and a 4/4 time signature. The second staff (measures 8-12) contains a repeat sign at the end of measure 7. The third staff (measures 13-18) concludes the piece with a double bar line.

22. Alemanda

Musical score for Alemanda, Cantus I, measures 1-12. The piece is in 4/4 time and B-flat major. The notation consists of four staves. The first staff (measures 1-7) begins with a treble clef and a 4/4 time signature. The second staff (measures 8-10) contains a repeat sign at the end of measure 7. The third staff (measures 11-12) concludes the piece with a double bar line. The fourth staff (measures 13-18) concludes the piece with a double bar line.

23. Alemanda

4

7

11

24. Alemanda

4

7

11

14

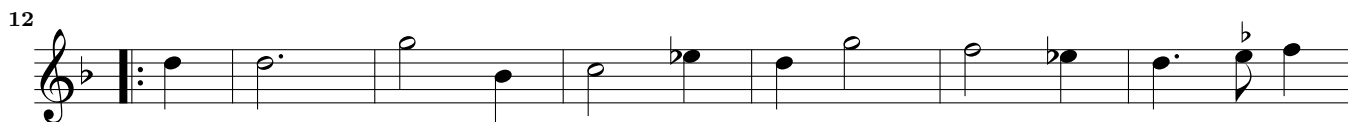
25. Alemanda

4

8

11

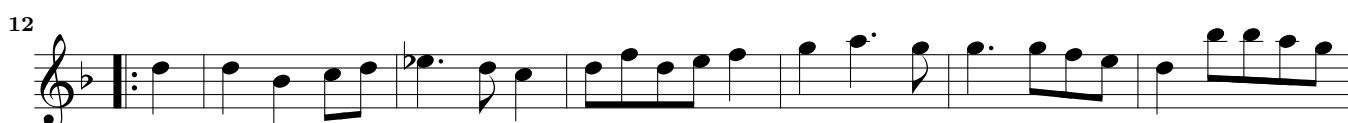
26. Courant



27. Alemanda



28. Courant



29. Alemanda

5

8

12

30. Courant

6

13

19

31. Alemanda

4

8

12

15

32. Alemanda



33. Alemanda



34. Courant



35. Alemanda

Musical score for piece 35, Alemanda, consisting of four staves of music in G major, 3/4 time. The first staff starts with a treble clef and a key signature of one sharp (F#). The second staff begins with a measure rest and a measure number '5'. The third staff begins with a measure rest and a measure number '8'. The fourth staff begins with a measure rest and a measure number '13'. The piece concludes with a double bar line and repeat dots.

36. Alemanda

Musical score for piece 36, Alemanda, consisting of four staves of music in G major, 3/4 time. The first staff starts with a treble clef and a key signature of one sharp (F#). The second staff begins with a measure rest and a measure number '5'. The third staff begins with a measure rest and a measure number '9'. The fourth staff begins with a measure rest and a measure number '12'. The piece concludes with a double bar line and repeat dots.

37. Alemanda

Musical score for piece 37, Alemanda, consisting of three staves of music in G major, 3/4 time. The first staff starts with a treble clef and a key signature of one sharp (F#). The second staff begins with a measure rest and a measure number '4'. The third staff begins with a measure rest and a measure number '6'. The fourth staff begins with a measure rest and a measure number '10'. The piece concludes with a double bar line and repeat dots.

38. Ballet

Musical score for '38. Ballet' in G major, common time. The score consists of four staves. The first staff begins with a treble clef, a key signature of one sharp (F#), and a common time signature (C). The melody starts on G4 and moves through various intervals, including eighth and sixteenth notes, with some slurs. The second staff continues the melody, ending with a repeat sign. The third staff features a more rhythmic section with many sixteenth notes. The fourth staff concludes the piece with a final cadence and a repeat sign.

39. Courant

Musical score for '39. Courant' in G major, 3/4 time. The score consists of four staves. The first staff begins with a treble clef, a key signature of one sharp (F#), and a 3/4 time signature. The melody starts on G4 and features a mix of eighth and quarter notes. The second staff continues the melody, ending with a repeat sign. The third staff features a more rhythmic section with many eighth notes. The fourth staff concludes the piece with a final cadence and a repeat sign.

40. Ballet

Musical score for '40. Ballet' in G major, common time. The score consists of four staves. The first staff begins with a treble clef, a key signature of one sharp (F#), and a common time signature (C). The melody starts on G4 and moves through various intervals, including eighth and sixteenth notes, with some slurs. The second staff continues the melody, ending with a repeat sign. The third staff features a more rhythmic section with many sixteenth notes. The fourth staff concludes the piece with a final cadence and a repeat sign.

41. Courant



Musical score for 41. Courant, 3/4 time signature, key of D major. The score consists of four staves. The first staff starts with a treble clef, a key signature of two sharps (F# and C#), and a 3/4 time signature. The melody begins with a quarter note D5, followed by a dotted quarter note E5, and then a series of eighth notes. The piece concludes with a double bar line and repeat signs.

42. Ballet



Musical score for 42. Ballet, common time signature, key of D major. The score consists of seven staves. The first staff starts with a treble clef, a key signature of two sharps (F# and C#), and a common time signature. The melody is characterized by frequent sixteenth-note patterns. The piece concludes with a double bar line and repeat signs.

43. Alemanda



Musical score for 43. Alemanda, common time signature, key of B minor. The score consists of three staves. The first staff starts with a treble clef, a key signature of two flats (Bb and Eb), and a common time signature. The melody features a mix of eighth and sixteenth notes. The piece concludes with a double bar line and repeat signs.

44. Alemanda

4

7

11

14

45. Courant

6

13

20

46. Alemanda

4

8

12

47. Alemanda

5
8
13

48. Alemanda

5
9
14

49. Ballet

5
9

50. Courant

6
12
18