

PADUANEN,
Alemanden, Couranten,
Balletten, Sarabanden

Mit drei Stimmen und Basso pro Organo

Leipzig 1645

Johann Rosenmüller
1619 – 1684

Published by Johan Tufvesson.

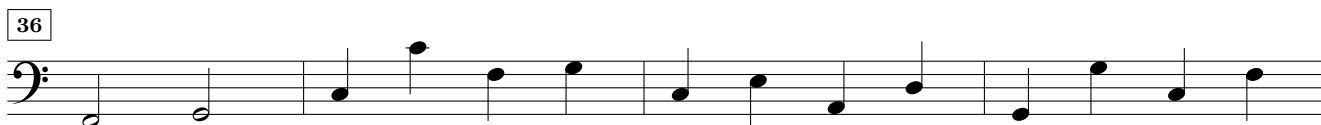
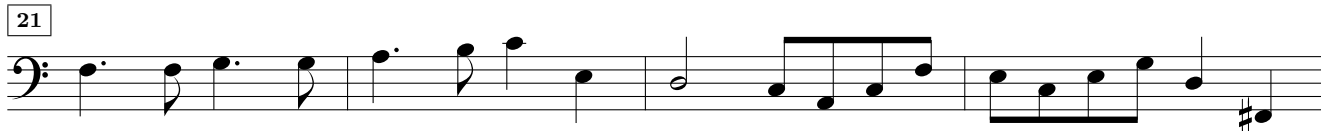
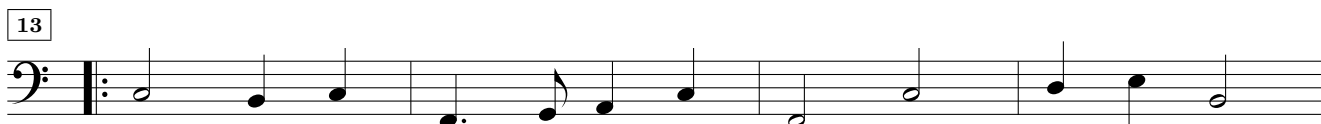
Non-commercial copying welcome

Revision : 1.2

Bassus
**Paduanen, Alemanden, Couranten,
 Balletten, Sarabanden**

Johann Rosenmüller (1619–1684)

1. Paduana



2. Alemanda



4



8



13



3. Courant



7



12



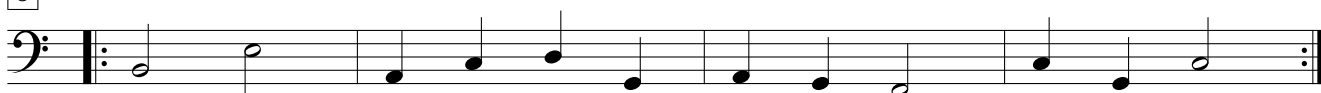
19



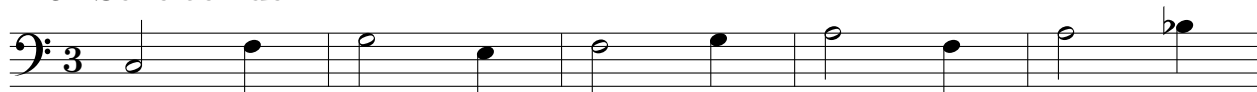
4. Ballet



5



5. Sarabanda



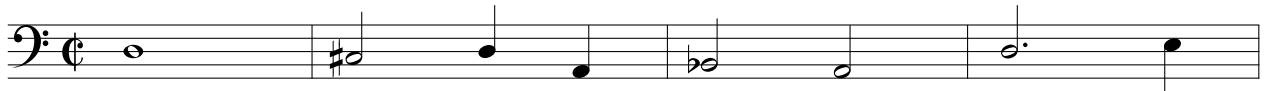
6



11



6. Paduana



5



8



13



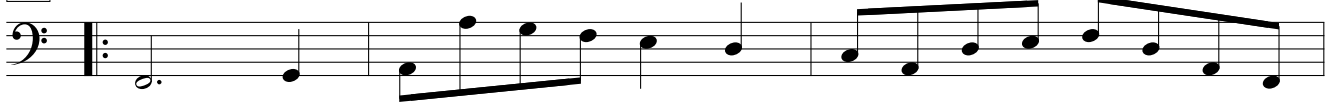
17



21



25



28



31



34



37



40



7. Alemanda



5



9



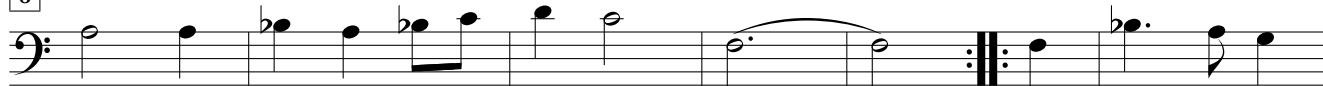
12



8. Courant



6



12



18



9. Ballet



4



8



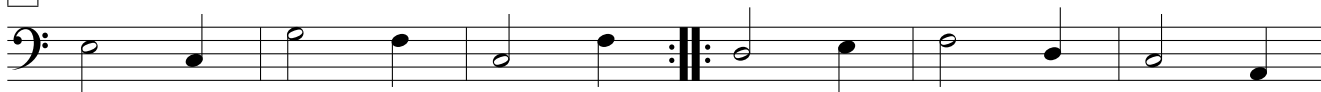
12



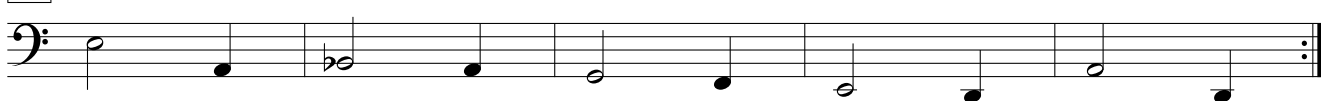
10. Sarabanda



6



12



11. Paduana



6



11



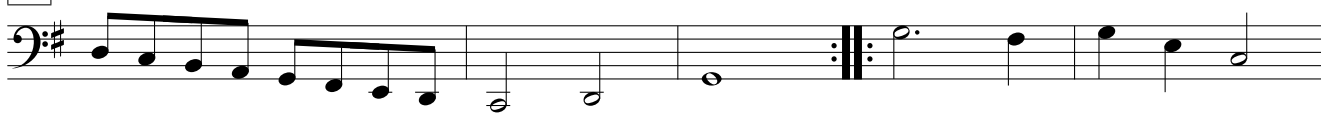
16



20



24



29



33



37



40



44



12. Alemanda



5



8



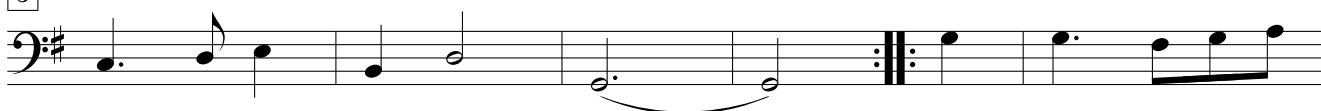
13



13. Courant



5



10



15



14. Ballet



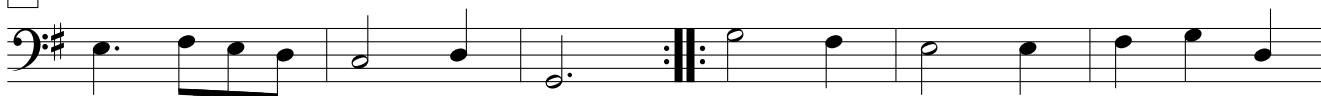
5



15. Sarabanda



6



12



16. Paduana



6



10



15



18



21



25



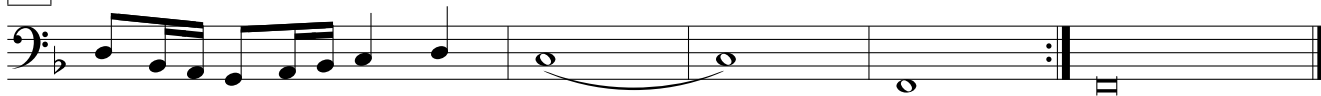
29



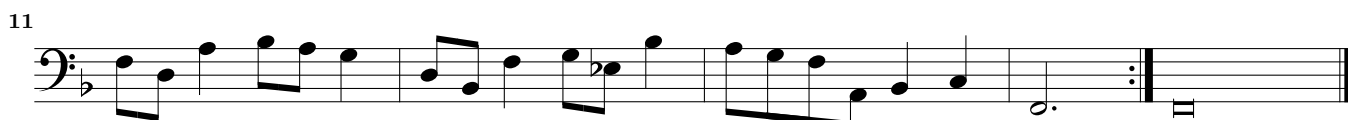
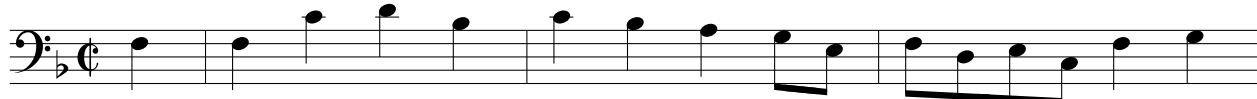
33



37



17. Alemanda



18. Courant

6

12

19

19. Ballet

5

9

20. Sarabanda

6

11

21. Alemanda

5

9

13

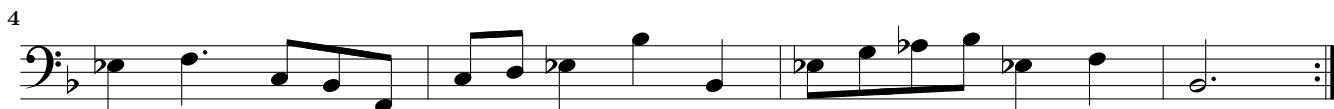
22. Alemanda



23. Alemanda



24. Alemanda



25. Alemanda

4

8

11

26. Courant

6

12

19

27. Alemanda

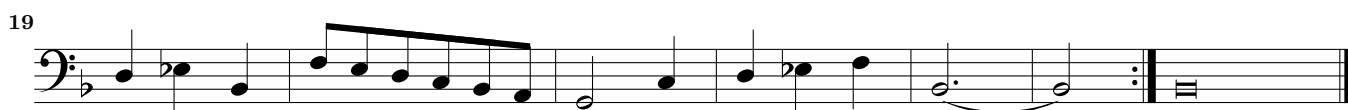
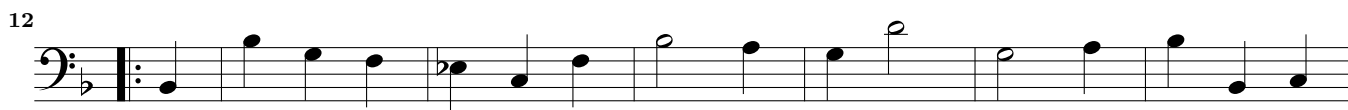
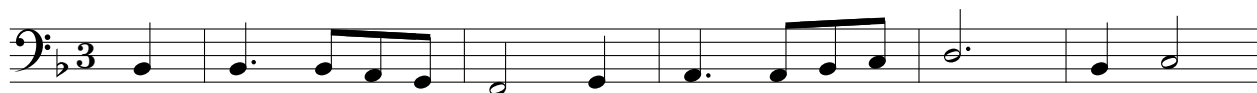
4

7

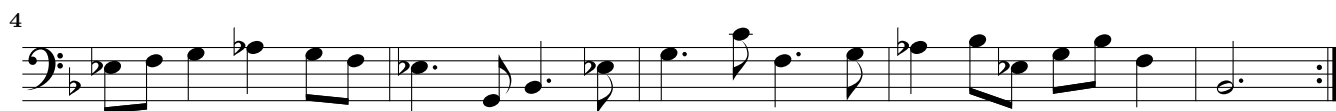
11

15

28. Courant



29. Alemanda



30. Courant



31. Alemanda

5

10

14

32. Alemanda

5

8

13

33. Alemanda

4

8

12

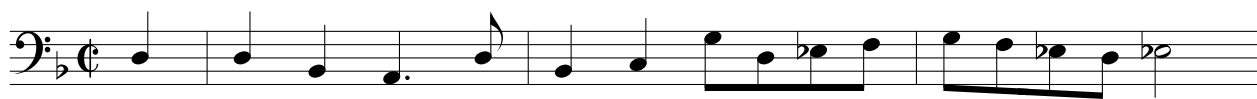
34. Courant



35. Alemanda



36. Alemanda



37. Alemanda

4

8

11

38. Ballet

5

8

13

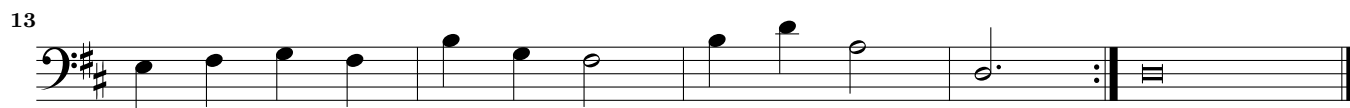
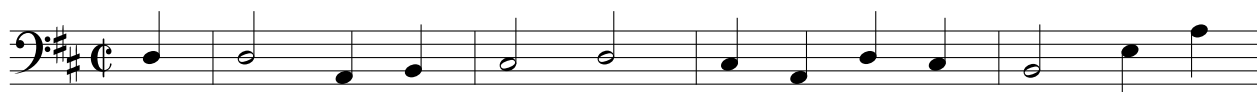
39. Courant

5

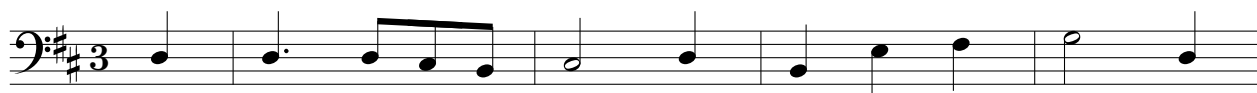
10

17

40. Ballet



41. Courant



42. Ballet



43. Alemanda

Musical score for piece 43, Alemanda, in bass clef, common time, and one flat. The score consists of four staves. The first staff begins with a treble clef and a common time signature. The second staff starts with a measure number '5'. The third staff starts with a measure number '9'. The fourth staff starts with a measure number '12'. The piece concludes with a double bar line and repeat signs.

44. Alemanda

Musical score for piece 44, Alemanda, in bass clef, common time, and one flat. The score consists of four staves. The first staff begins with a treble clef and a common time signature. The second staff starts with a measure number '4'. The third staff starts with a measure number '7'. The fourth staff starts with a measure number '11'. The piece concludes with a double bar line and repeat signs.

45. Courant

Musical score for piece 45, Courant, in bass clef, 3/4 time, and one flat. The score consists of four staves. The first staff begins with a treble clef and a 3/4 time signature. The second staff starts with a measure number '6'. The third staff starts with a measure number '13'. The fourth staff starts with a measure number '20'. The piece concludes with a double bar line and repeat signs.

46. Alemanda



47. Alemanda

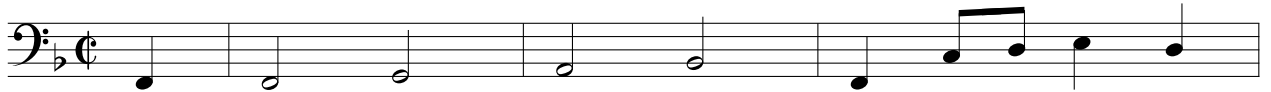


48. Alemanda





49. Ballet



50. Courant

