

PADUANEN,
Alemanden, Couranten,
Balletten, Sarabanden

Mit drei Stimmen und Basso pro Organo

Leipzig 1645

Johann Rosenmüller
1619 – 1684

Published by Johan Tufvesson.

Non-commercial copying welcome

Revision : 1.1

Basso pro Organo
**Paduanen, Alemanden, Couranten,
 Balletten, Sarabanden**

Johann Rosenmüller (1619–1684)

1. Paduana

The musical score for '1. Paduana' is written in bass clef with a common time signature. It consists of 45 measures, with measure numbers 4, 7, 10, 15, 19, 23, 26, 31, 36, and 40 marked in boxes. The score includes various ornaments (trills, mordents, grace notes) and specific fingerings indicated by numbers 1-7. A repeat sign is present at measure 10 and measure 26. The piece concludes with a double bar line and a repeat sign at the end.

2. Alemanda

4

8

13

19

3. Courant

7

12

19

24

4. Ballet

5

10

5. Sarabanda

6

11

16

6. Paduana

6
6
7 6 #

5
6 5 6
6
6 6 b

8
5 3 7 6 5 3 5 6 6 5 5 # #
4 3 4 3 4 3 4 # #

13
6 5 5 3
4

17
5 4 # 6 5

21
6 6 5 3
3 4 3

25
6 # # 6 6

28
5 6 5 3 5 6 5 6
3 4 4 3 # 4 #

31
6 6 b b6 6 9 8
7 6

34
7 6 # 6 5 6 6
9 8 # 4 #

37
5 6 5 6

41
b # # 6 5 #
4 #

7. Alemanda

6 6 6 5 4 3

5

6 5 4 # # 6 6

9

6 6 # b 6

12

6 6 5 4 # #

8. Courant

6 6 6 b

6

5 6 6 4 3 6

12

5 4 3 6 5 4 # b # #

18

b 5 4 # #

9. Ballet

4

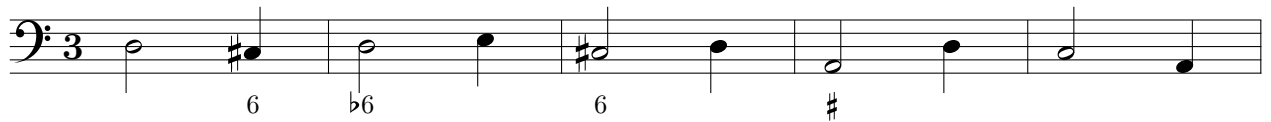
6 6 5 4 3

8

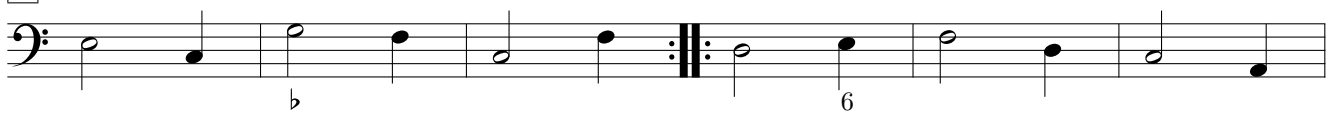
12

b 6 6 7 # #

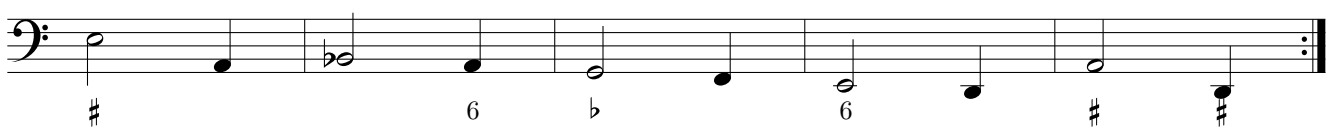
10. Sarabanda



6



12



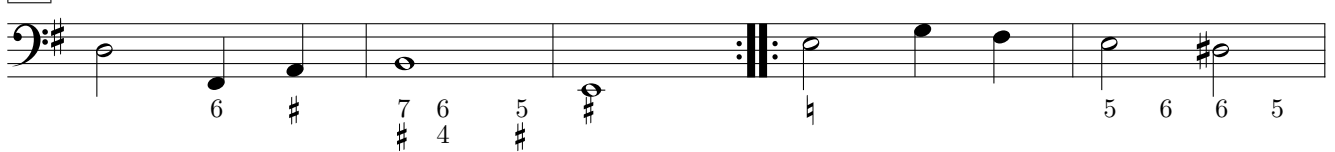
11. Paduana



5



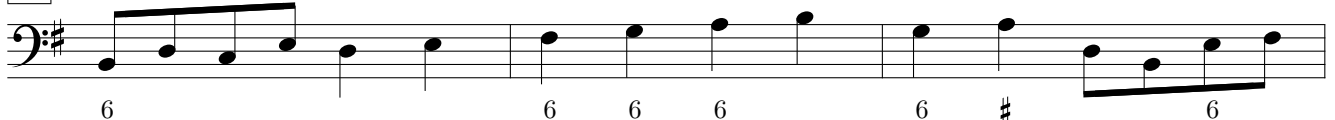
10



15



19



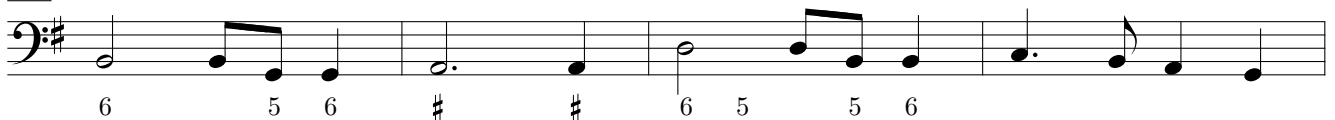
22



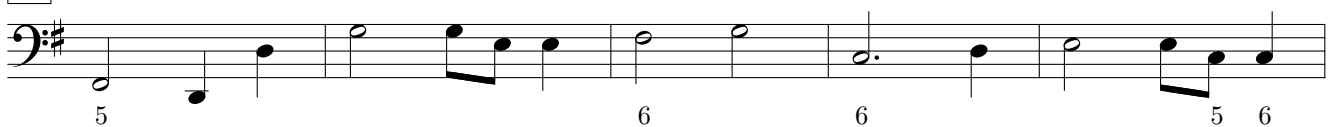
25



30



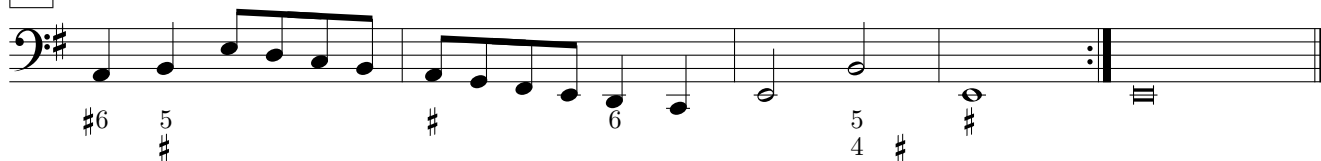
34



39



43



12. Alemanda



5



8



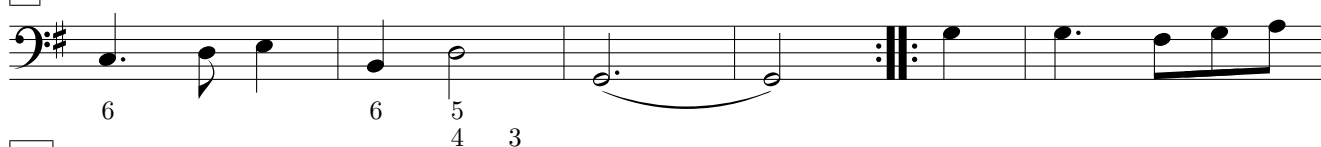
13



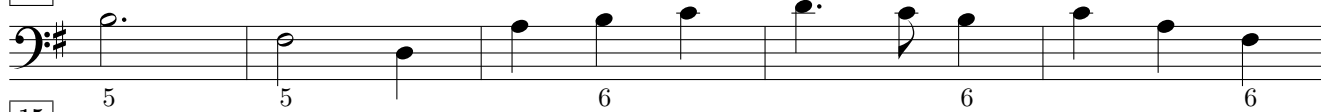
13. Courant



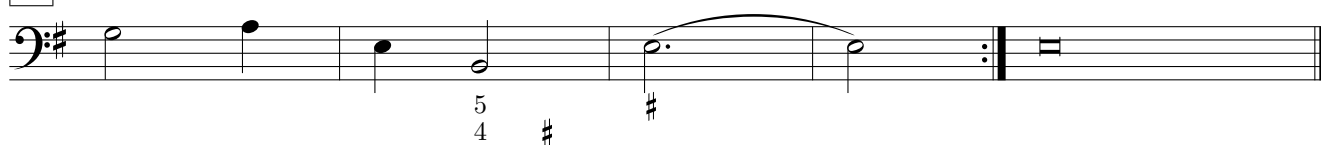
5



10



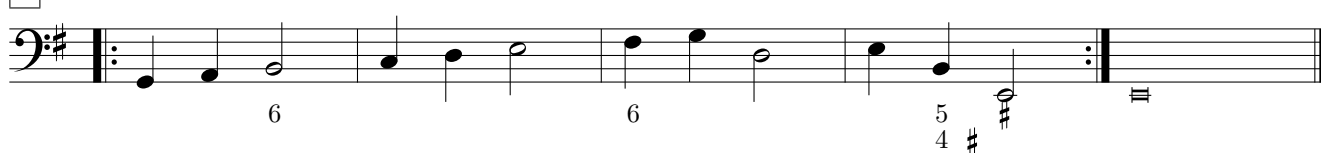
15



14. Ballet



5



15. Sarabanda

6

5 6 6 5 6

12

6 6 6

6 # 5

16. Paduana

6

6 4 3 9 8 6 5 6 6 6

10

6 6 6 6 6 6 5 3 4 3

15

6 6 6 6 6 6 6

18

6 4 6 6 6 6 6

21

6 4 3 6 4 6 4

25

6 6 5 6 5 6 6

29

6 6 6 6 6 6 6

33

6 6 6 6 6 6 6

37

5 6 5 3 4 3

17. Alemanda

Musical score for '17. Alemanda' in bass clef, common time. The score consists of four staves. The first staff starts with a treble clef and a common time signature, then changes to a bass clef. Fingerings are indicated by numbers 4, 5, 6, and 7. The second staff begins with a measure rest of 4 measures. The third staff begins with a measure rest of 7 measures. The fourth staff begins with a measure rest of 11 measures. The piece concludes with a double bar line and repeat dots.

18. Courant

Musical score for '18. Courant' in bass clef, 3/4 time. The score consists of four staves. The first staff starts with a treble clef and a 3/4 time signature, then changes to a bass clef. Fingerings are indicated by numbers 6, 5, 4, and 3. The second staff begins with a measure rest of 6 measures. The third staff begins with a measure rest of 12 measures. The fourth staff begins with a measure rest of 19 measures. The piece concludes with a double bar line and repeat dots.

19. Ballet

Musical score for '19. Ballet' in bass clef, common time. The score consists of three staves. The first staff starts with a treble clef and a common time signature, then changes to a bass clef. Fingerings are indicated by numbers 6 and 5. The second staff begins with a measure rest of 5 measures. The third staff begins with a measure rest of 9 measures. The piece concludes with a double bar line and repeat dots.

20. Sarabanda

6

11

Detailed description: This block contains the first ten measures of the Sarabanda. It is written in bass clef with a key signature of one flat (B-flat) and a 3/4 time signature. The notation includes quarter notes, eighth notes, and sixteenth notes. Fingerings are indicated by numbers 1-5 below the notes. Measure 6 has a '6' below it. Measure 11 has an '11' above it. The piece ends with a double bar line and repeat dots.

21. Alemanda

4

7

10

13

Detailed description: This block contains measures 1 through 13 of the Alemanda. It is written in bass clef with a key signature of one flat (B-flat) and a common time (C) signature. The notation includes quarter notes, eighth notes, and sixteenth notes. Fingerings are indicated by numbers 1-5 below the notes. Measure 4 has a '4' above it. Measure 7 has a '7' above it. Measure 10 has a '10' above it. Measure 13 has a '13' above it. The piece ends with a double bar line and repeat dots.

22. Alemanda

4

7

12

Detailed description: This block contains measures 1 through 12 of the second Alemanda. It is written in bass clef with a key signature of one flat (B-flat) and a common time (C) signature. The notation includes quarter notes, eighth notes, and sixteenth notes. Fingerings are indicated by numbers 1-5 below the notes. Measure 4 has a '4' above it. Measure 7 has a '7' above it. Measure 12 has a '12' above it. The piece ends with a double bar line and repeat dots.

23. Alemanda

6 6 6 b b6 6

6 b6 6 b 5 4 #

b b b6 # 6 6

#6 # 5 4 #

24. Alemanda

6 b b6 4 3

6 b b 5 4 3 6

6 6 b 6 b6

6 6 6 6 b 6

25. Alemanda

6 b b b b

b 6 b 5 4 # 6 6 b b

b6 6 b6

b 6 6 5 4 3

26. Courant

6

12

19

27. Alemanda

4

7

11

15

28. Courant

7

12

19

29. Alemanda

30. Courant

31. Alemanda

32. Alemanda

6 6 6 6 6 6 6

5 5 4 3

8 6 4 # 6

13 6 5 4 3

33. Alemanda

6 6 6 6

4 6 6 6

8 6 6 5 4 3 6

12 6 6 6 5 4 3

34. Courant

6 #6

5 6 6 6 5 4 3 6 6 6

11 6

16 6 6 5 4 3

35. Alemanda

36. Alemanda

37. Alemanda

6 6 b b

6 b 5 3 6 6 5 4 # # 6

6 6 6 5 4 3

b6 6 5 4 # #

38. Ballet

6 6 6

6 5 3 6 6 6 5 4 3

6 6 6 6 6 6

6 5 4 3

39. Courant

6 6 6 6 5 6

6 6 6 6 6 6

6 5 5 6 6 6 6 6 6

6 6 #6 5 4 3

40. Ballet

40. Ballet

4

8

13

41. Courant

41. Courant

5

10

16

42. Ballet

42. Ballet

5

10

14

19

43. Alemanda

43. Alemanda

4

7

12

44. Alemanda

44. Alemanda

5

8

13

45. Courant

45. Courant

6

13

19

46. Alemanda

6 6 6 6 6

4 6 6 5 4 3 6

8 6 b 6

12 b 5 6 5 6 b6 5 6 6 5 4 3

47. Alemanda

6 # 6 6

5 b 6 6 5 4 3

8 6 b 6 6 6 6 6 5 4 3

48. Alemanda

6 6 6 6

5 6 6 6 6 6 6 6 5 4 3

9 6 6 6 6 6 6 6

14 6 6 6 5 4 3

49. Ballet

6

6

6

5 6 5
3 4 3

6

6

6

5 6
5 4 3

50. Courant

6

6

6

6

5 6 5
3 4 3

6

#

6

6

6

