

2
Violino Secondo

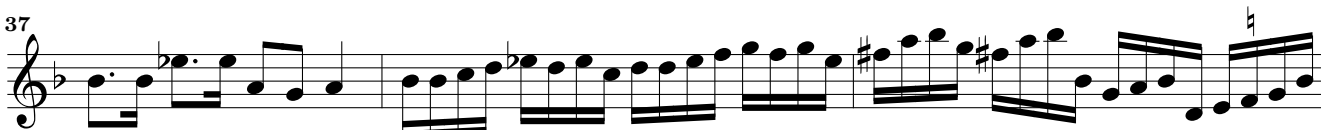
Sonata Prima à 2

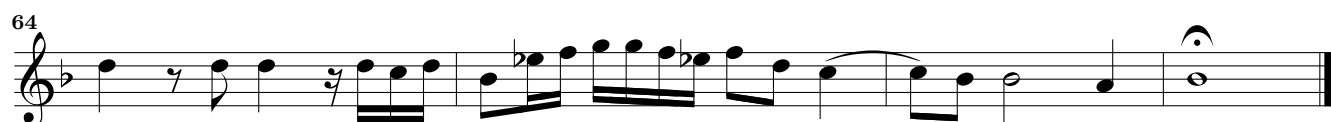
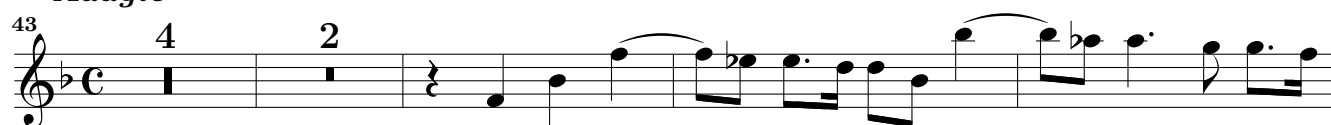
Johan Rosenmüller (1619-1684)

Adagio



Allegro



Adagio*Prestissimo**p*

4 *Adagio*

Rosenmüller 1682 – Sonata Prima à 2 – Violino Secondo

95 **6**

105

109

114

117

121

124

127

130

133

136

139

142

Detailed description: This page contains the musical notation for measures 95 through 142 of the second violin part of Rosenmüller's Sonata Prima à 2. The music is in 3/2 time and B-flat major. It begins with a treble clef, a key signature of one flat, and a 3/2 time signature. A measure rest for 6 measures is indicated at the start of measure 95. The notation includes various note values (quarter, eighth, sixteenth, and dotted notes), rests, and dynamic markings. A repeat sign with first and second endings is used at the end of measure 117. The piece concludes with a double bar line at the end of measure 142.