

# Sonate a la Maresienne

POUR LE VIOLON, LA VIOLE  
ET LE CLAVEÇIN

Paris 1723

Marin Marais

1656 – 1728

Published by Johan Tufvesson.

Non-commercial copying welcome

*Revision : 1.12*

# Sonate a la Maresienne

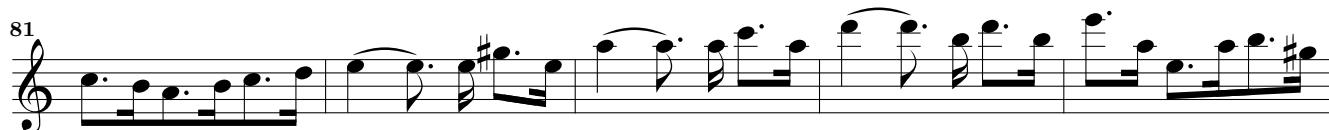
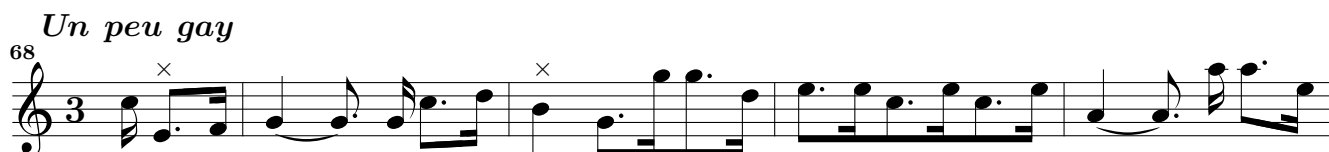
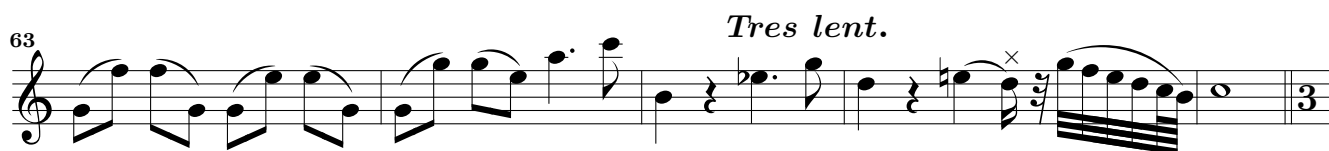
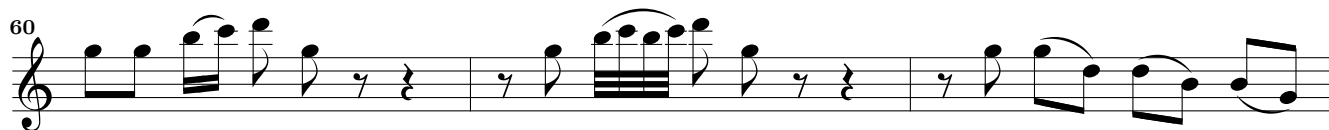
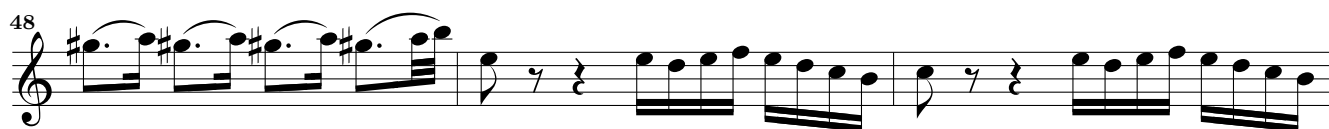
Marin Marais  
(1656-1728)

*Un peu grave*

Musical score for the first section, marked *Un peu grave*. It consists of five staves of music in C major, 3/4 time. The first staff begins with a treble clef, a common time signature (C), and a fermata. The music features a mix of quarter, eighth, and sixteenth notes, with some slurs and accents. Measure numbers 7, 12, 18, and 24 are indicated at the start of their respective staves. The section concludes with a double bar line and a common time signature (C).

*Legerement*

Musical score for the second section, marked *Legerement*. It consists of five staves of music in C major, 3/4 time. The first staff begins with a treble clef, a common time signature (C), and a fermata. The music is characterized by frequent sixteenth-note patterns and slurs. Measure numbers 29, 32, 35, 38, 42, and 45 are indicated at the start of their respective staves. The section concludes with a double bar line.



4 *Sarabande*

*Marais - Sonate a la Maresienne - Violon*

Musical score for the Sarabande section, measures 95 to 114. The music is in 3/4 time and features a variety of rhythmic patterns, including eighth and sixteenth notes, and rests. There are several accidentals (sharps and flats) and dynamic markings (x) throughout the passage. The score includes first and second endings at measures 110 and 114.

*Tres vivement*

Musical score for the *Tres vivement* section, measures 119 to 190. This section is characterized by a fast tempo and a driving eighth-note rhythm. It includes several accidentals and dynamic markings (x). The piece concludes with a final cadence at measure 190.

195

200

207

214

221

226

231

236

241

*Gravement*

246

251

256

261

265

*Doux.*

*Tres doux.*

*Un peu plus fort et toujours*

*En augmentant jusqu'a la fin*

*Gigue*

270

273

275

278

280

283

286

289

292

296

1. 2.

*Doux.* *Fort.*

1. 2.