

Sonnerie de
S.^{te} Genevieve du Mont
de Paris.

POUR LE VIOLON, LA VIOLE
ET LE CLAVEÇIN

Paris 1723

Marin Marais
1656 – 1728

Published by Johan Tufvesson.

Non-commercial copying welcome

Revision : 1.25

Violon

Sonnerie de S.^{te} Genevieve du Mont de Paris

Marin Marais (1656-1728)

Legerement

4

8

12

Grand Coup d'archet et pointé

16

20

p *f* *p*

25

f *p* *f*

30

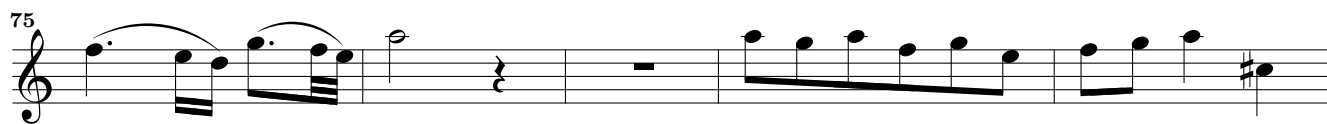
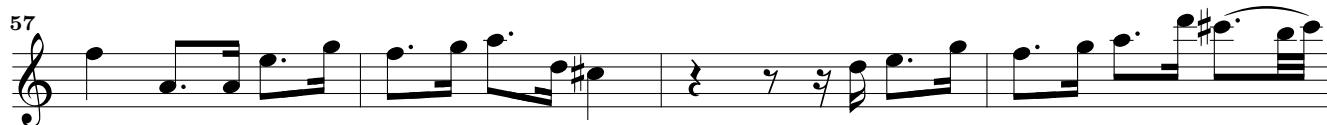
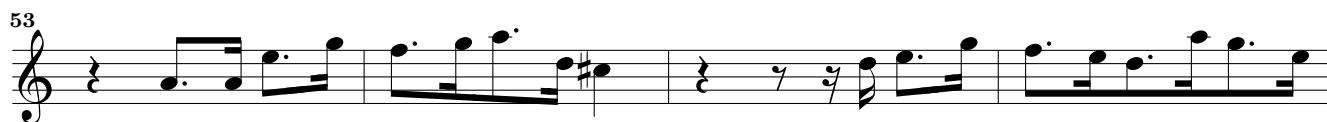
3

37

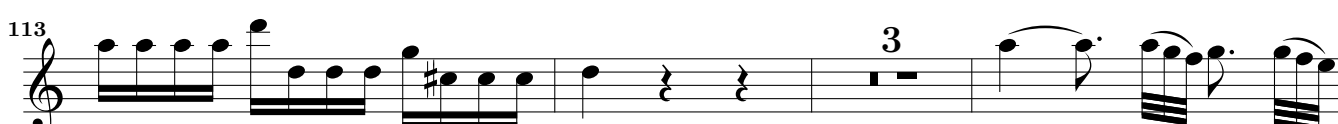
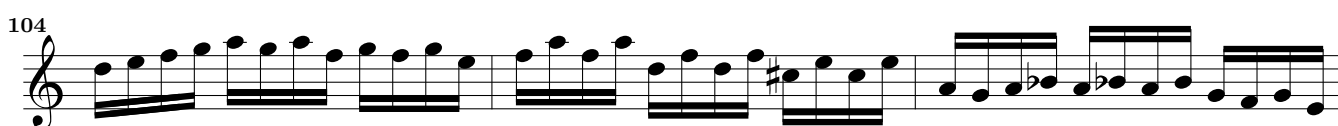
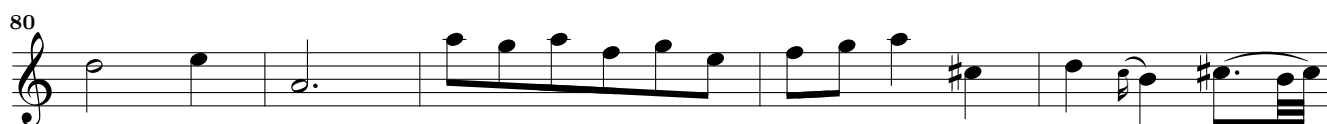
42

46

3



Pointé a grand Coup d'archet



119



123

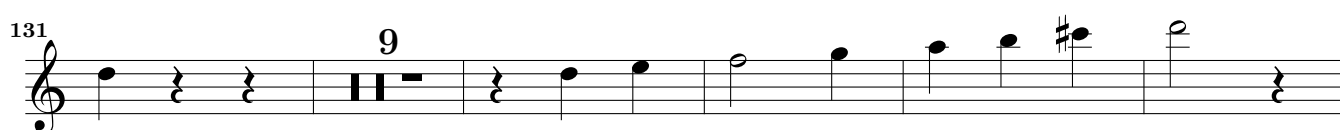


127

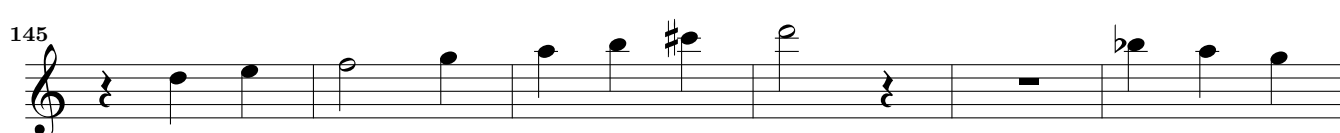


131

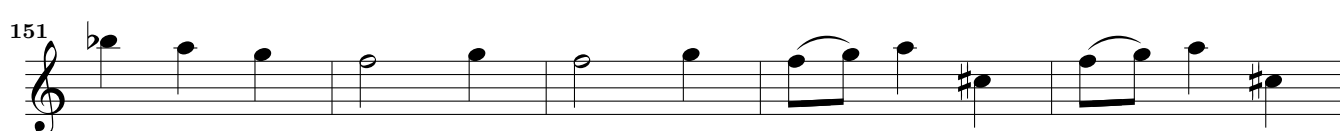
9



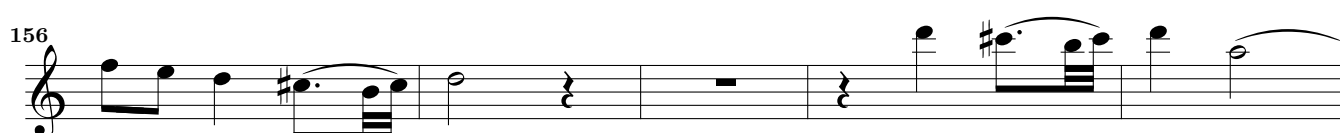
145



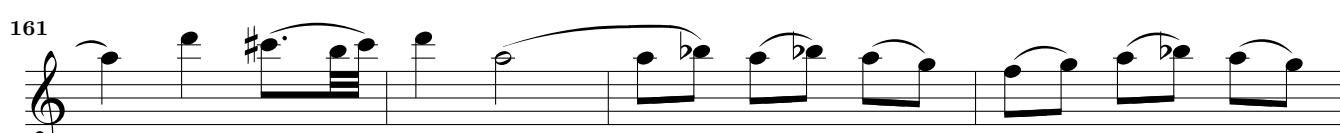
151



156



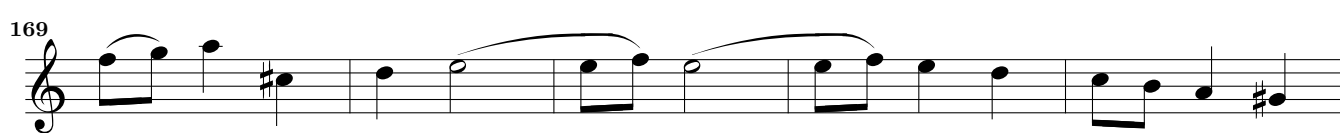
161



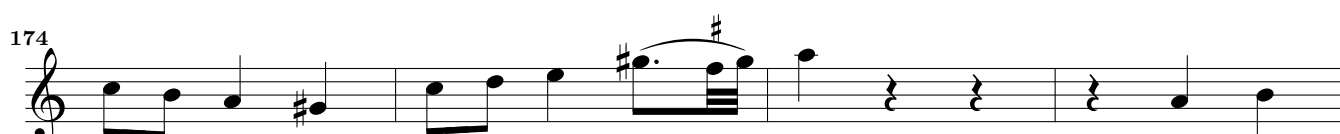
165



169

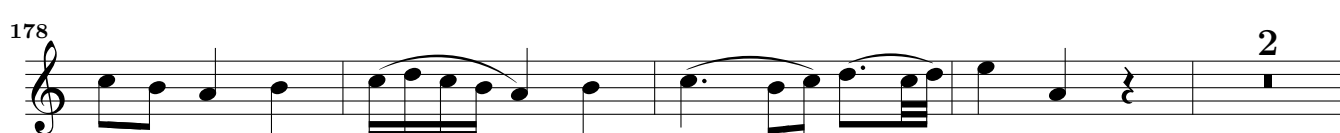


174



178

2



184

189

194

199

203

206

210

215

219

225

230

234

p *f* *p* *f* *p* *f* *p*

237 *f* *p*

240 *f* *p*

243 *f* *p* *f* *p*

247 *f* *p* *f* *p*

251 16

271

276 *p*

280 *f* *p* *f*

285 *p* *f*

289 *p* *f*

294

Pointé

299