

Pieces en Trio

Pour les Flutes, Violon, & Dessus de Viole

Paris 1692

Marin Marais

1656 – 1728

Published by Johan Tufvesson.

Non-commercial copying welcome

Revision : 1.2

1er Dessus

Suite I

Prelude

Marin Marais (1656-1728)

Sarabande

2 Sarabande

Musical score for Sarabande, measures 1-20. The piece is in 3/4 time. The notation includes various note values, rests, and articulation marks such as accents and slurs. Measure 7 contains a first and second ending. Measure 20 also contains a first and second ending.

Fantaisie

Musical score for Fantaisie, measures 1-49. The piece is in 3/4 time. The notation includes various note values, rests, and articulation marks such as accents and slurs. Measure 7 contains a first and second ending. Measure 18 contains a first and second ending. Measure 49 contains a first and second ending.

Loure

Musical score for 'Loure' in 6/4 time, consisting of 22 measures. The score is written in a single treble clef staff. It begins with a key signature of one sharp (F#) and a common time signature of 6/4. The melody features a mix of quarter, eighth, and sixteenth notes, with some measures containing rests. There are several measures with a '+' sign above the notes, indicating specific performance techniques. The piece concludes with a double bar line and repeat dots.

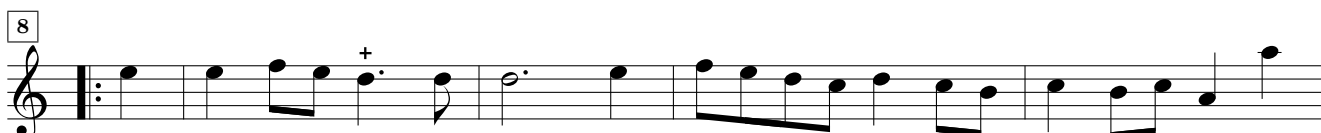
La bagatelle

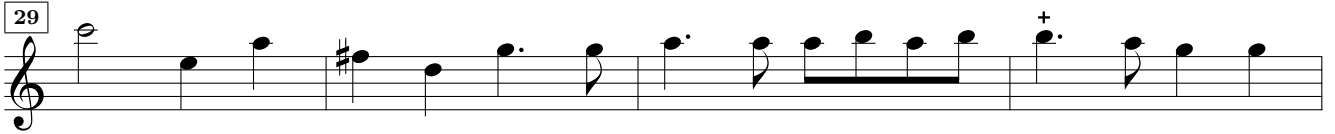
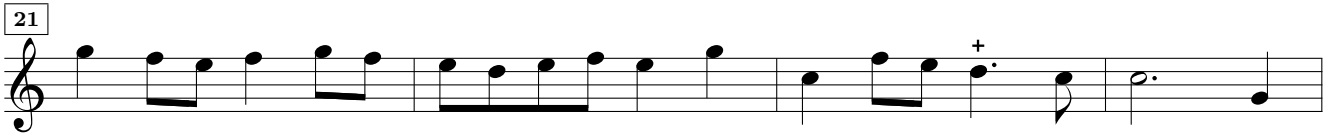
Musical score for 'La bagatelle' in 3/4 time, consisting of 31 measures. The score is written in a single treble clef staff. It begins with a key signature of one sharp (F#) and a common time signature of 3/4. The melody is characterized by a steady eighth-note pattern in the first half of each measure, with occasional rests and longer note values. There are several measures with a '+' sign above the notes. The piece concludes with a double bar line and repeat dots.

Gavotte

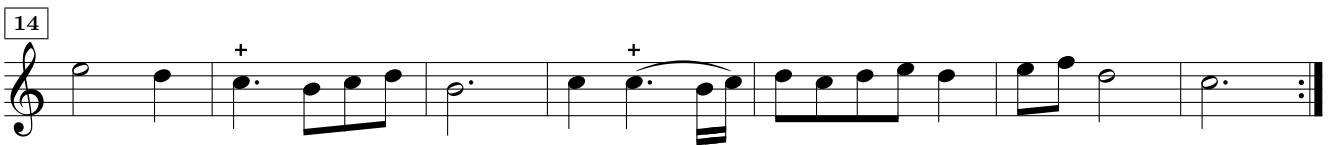


Rondeau

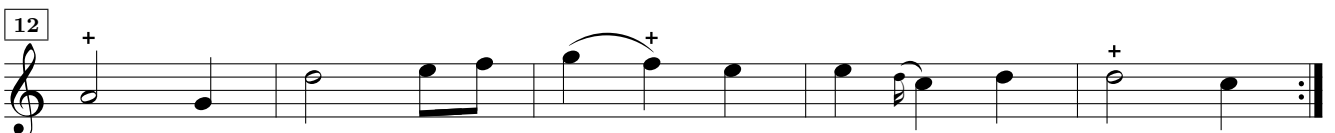
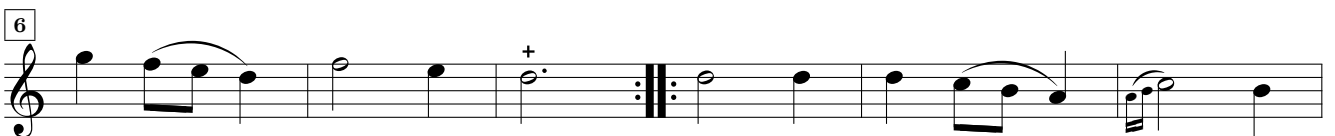




Menuet



Autre



6 Chaconne

6
12
18
24
30
36
41
53
59
66
72
77

82

89

102

108

115

121

133

138

143

148

154

160

166

172

8
185

190

195

201

207

212

217

229

235

241

