

PER OGNI SORTE D'STRUMENTO

Sonate da Chiesa e da Camera
A Due, Trè, & à quattro.

Opera XXII, Venetia 1655

Biagio Marini

1594 – 1663

Published by Johan Tufvesson.

Non-commercial copying welcome

Revision : 1.2

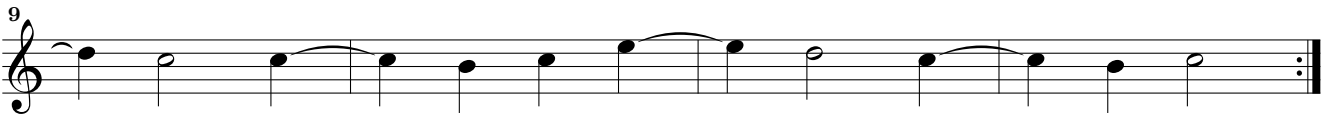
Name	Instr.	Page
Balletto Primo	2vl,b,bc	4
Balletto Secondo	2vl,(va),bc	5
Balletto Terzo	2vl,(va),bc	7
Balletto Quarto	2vl,(va),bc	7
Zarabanda Prima	2vl,va,bc	8
Zarabanda Seconda	2vl,va,bc	8
Zarabanda Terza	2vl,va,bc	9
Zarabanda Quarta	2vl,va,bc	9
Corrente Prima	2vl,va,bc	10
Corrente Seconda	2vl,va,bc	10
Corrente Terza	2vl,va,bc	11
Corrente Quarta	2vl,va,bc	11
Sinfonia Primo Tuono	2vl,va,bc	12
Sinfonia Secondo Tuono	2vl,va,bc	12
Sinfonia Terzo Tuono	2vl,va,bc	12
Sinfonia Quarto Tuono	2vl,va,bc	13
Sinfonia Quinto Tuono	2vl,va,bc	13
Sinfonia Sesto Tuono	2vl,va,bc	13
Sonata per due Violini ò Cornetti	2vl,bc	14
Sonata à Basso è Violino ò Cornetto ..	vl/c,b,bc	<i>tacet</i>
Sonata Sopra fuggi dolente	2vl,b,bc	16
Sonata Seconda	2vl,b,bc	18
Sonata Terza	3vl,bc	20
Sonata à 4	2vl,va/tb,b,bc	21
Passacalio	2vl,(va),bc	22

4
Violino Secondo

Balletto Primo à 3

Biagio Marini (1594–1663)

Prima parte



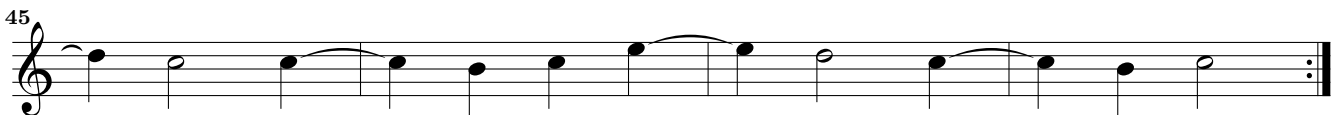
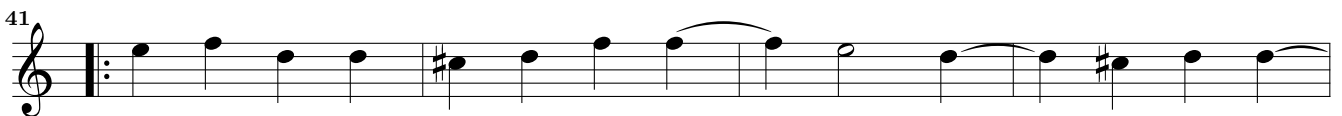
Sec. parte

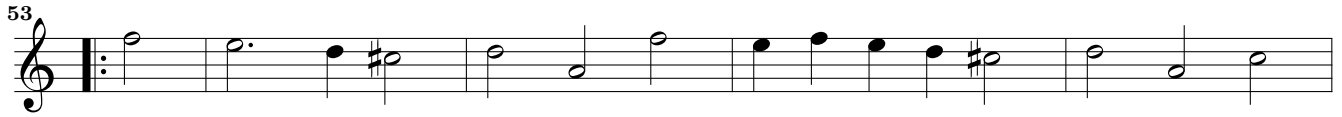
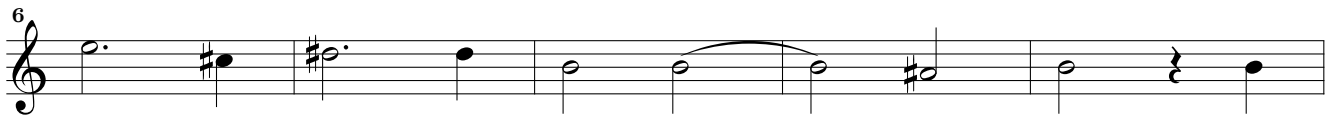
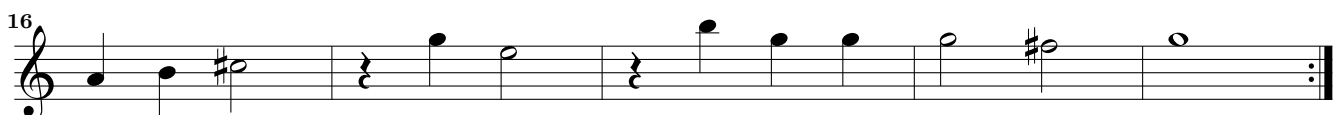


Terza parte



Quarta parte come stà



Quinta parte Corrente Presto**Balletto Secondo à 3. & à 4.***Entrata grave**Balletto allegro*

6 *Gagliarda* Marini Op. 22 – Balletto Secondo à 3. & à 4. – Violino Secondo

Musical score for *Gagliarda*, Violino Secondo, measures 1-18. The piece is in 3/2 time and D major. The score consists of six staves of music. Measure numbers 1, 5, 8, 11, 14, and 18 are indicated at the start of their respective staves. The music features a mix of eighth and sixteenth notes, with some rests and a final double bar line at the end of measure 18.

Corrente

Musical score for *Corrente*, Violino Secondo, measures 1-20. The piece is in 3/4 time and D major. The score consists of five staves of music. Measure numbers 1, 5, 10, 15, and 20 are indicated at the start of their respective staves. The music is characterized by a steady eighth-note rhythm with some sixteenth-note passages and a final double bar line at the end of measure 20.

Pretirata

Musical score for *Pretirata*, Violino Secondo, measures 1-6. The piece is in common time (C) and D major. The score consists of two staves of music. Measure numbers 1 and 6 are indicated at the start of their respective staves. The music features a simple, rhythmic pattern of quarter notes with some rests, ending with a double bar line at the end of measure 6.

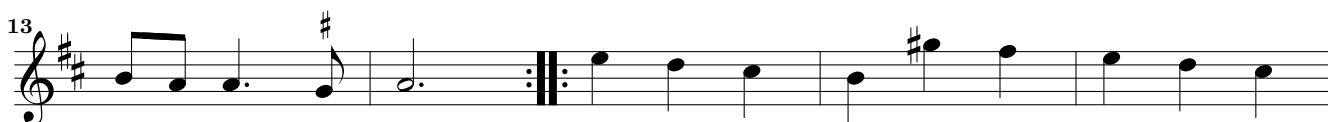
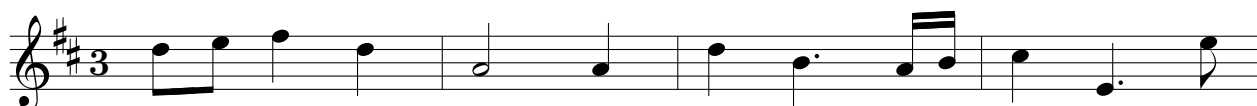
Balletto Terzo à 3. & à 4.

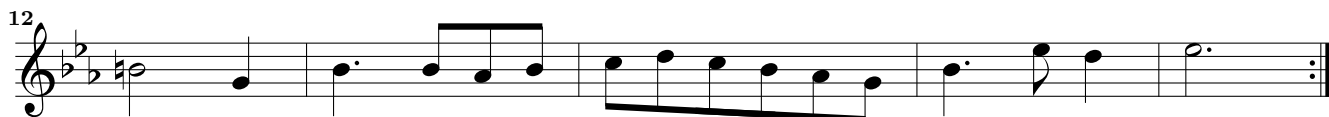
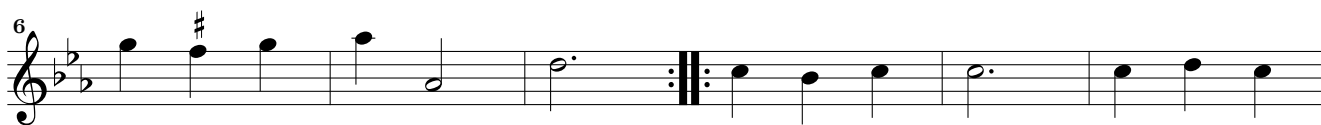
Musical score for Balletto Terzo à 3. & à 4. in C major, common time. The score consists of four staves of music. The first staff starts with a treble clef and a common time signature. The second staff begins with a measure rest of 4. The third staff begins with a measure rest of 6. The fourth staff begins with a measure rest of 10. The key signature has one sharp (F#) and the time signature is common time (C).

Balletto Quarto. à 3 & à 4

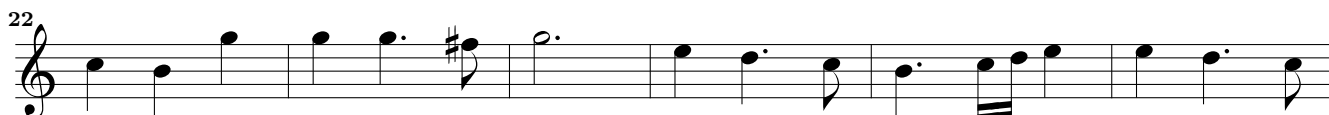
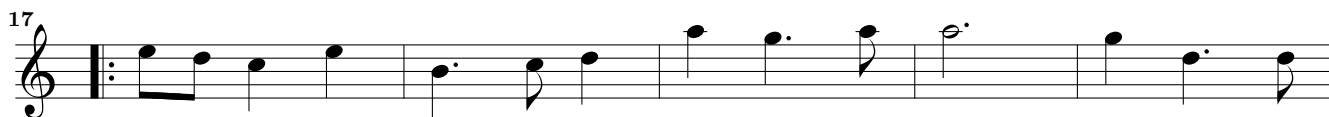
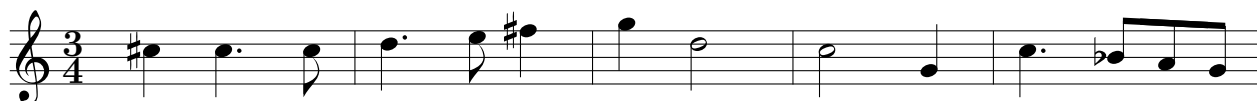
Allemano

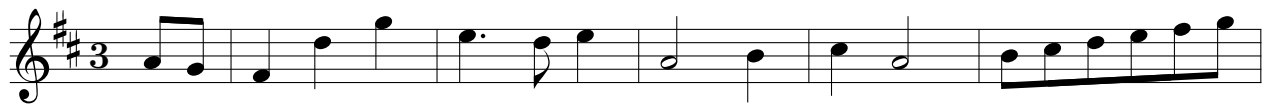
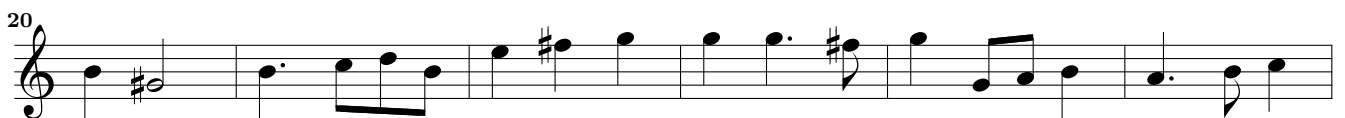
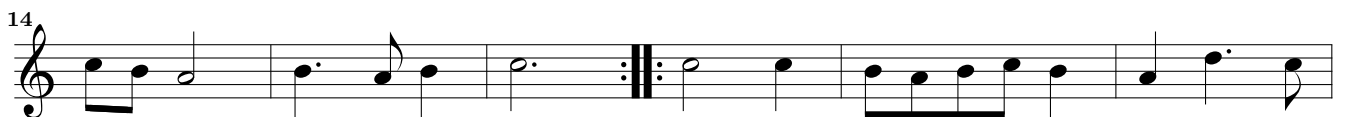
Musical score for Balletto Quarto. à 3 & à 4 in C major, common time. The score consists of three staves of music. The first staff starts with a treble clef and a common time signature. The second staff begins with a measure rest of 4. The third staff begins with a measure rest of 7. The key signature has one sharp (F#) and the time signature is common time (C).

Zarabanda Prima*Zarabanda Seconda*



Zarabanda Quarta

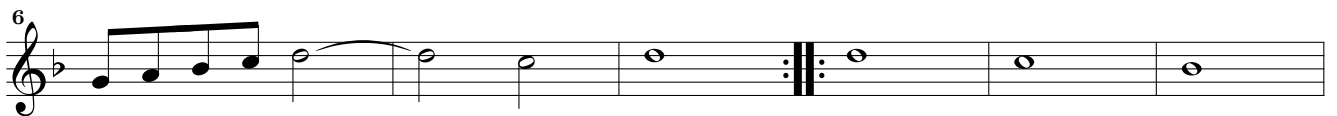


Corrente Prima*Corrente Seconda*

Musical score for *Corrente Terza*, Violino Secondo, measures 1-30. The score is written in treble clef with a 3/4 time signature. It consists of six staves of music. The first staff (measures 1-4) begins with a treble clef, a 3/4 time signature, and a key signature of one flat (B-flat). The second staff (measures 5-10) continues the melody. The third staff (measures 11-15) includes a repeat sign at the end. The fourth staff (measures 16-22) starts with a repeat sign and a key signature change to two sharps (D major). The fifth staff (measures 23-29) continues in D major. The sixth staff (measures 30-30) ends with a repeat sign and a double bar line.

Corrente Quarta

Musical score for *Corrente Quarta*, Violino Secondo, measures 1-23. The score is written in treble clef with a 3/4 time signature. It consists of five staves of music. The first staff (measures 1-4) begins with a treble clef, a 3/4 time signature, and a key signature of two flats (B-flat major). The second staff (measures 5-10) continues the melody. The third staff (measures 11-16) includes a repeat sign. The fourth staff (measures 17-22) continues the melody. The fifth staff (measures 23-23) ends with a repeat sign and a double bar line.

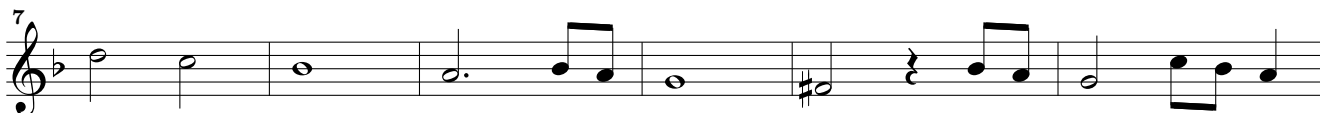
Sinfonia *Primo Tuono*Sinfonia *Secondo Tuono*Sinfonia *Terzo Tuono*



Sinfonia *Quinto Tuono*

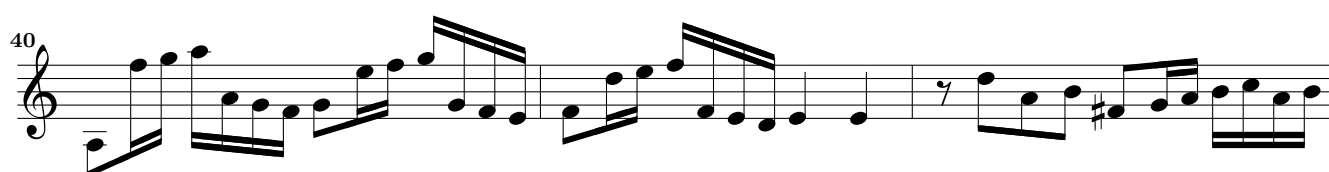
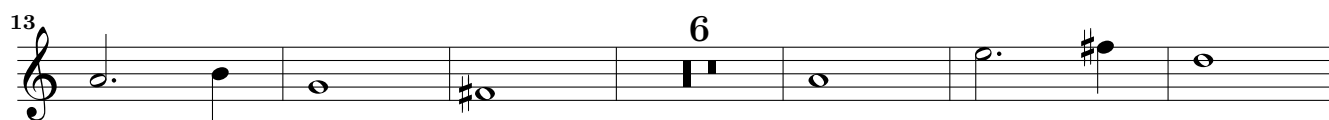
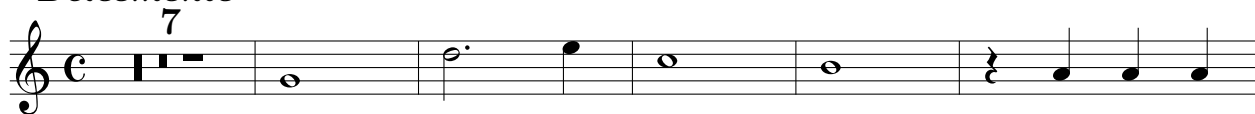


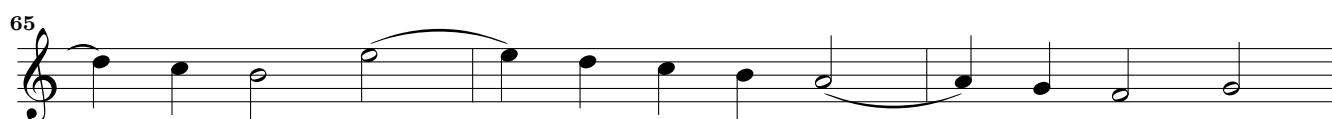
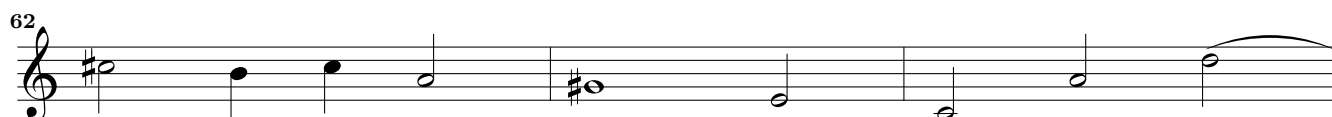
Sinfonia *Sesto Tuono*



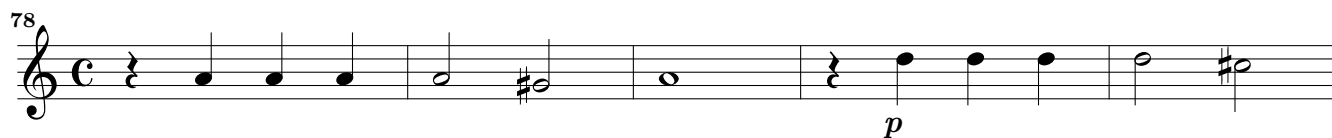
Sonata per due Violini ò Cornetti

Dolcemente

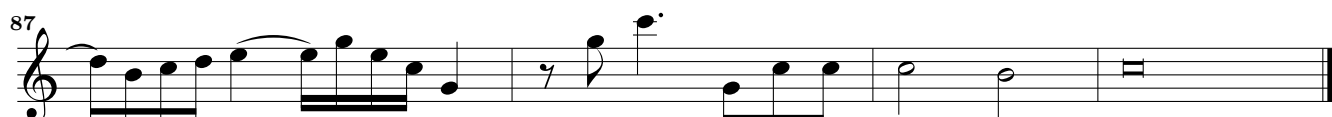
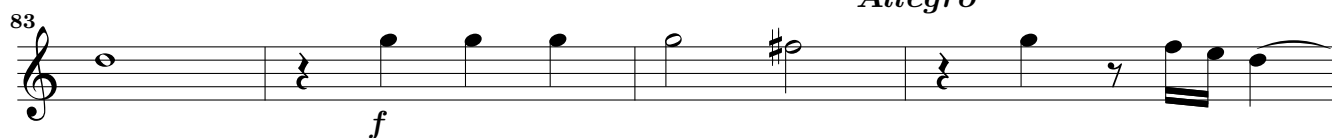




Dolcemente

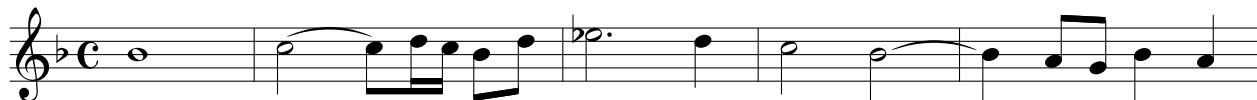


Allegro

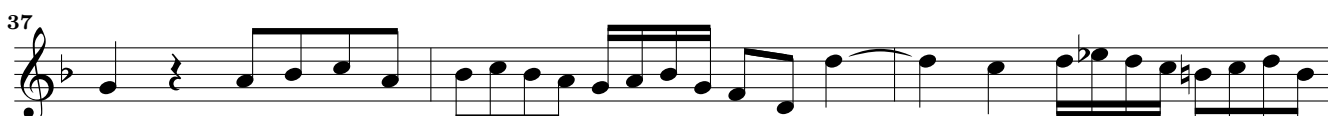
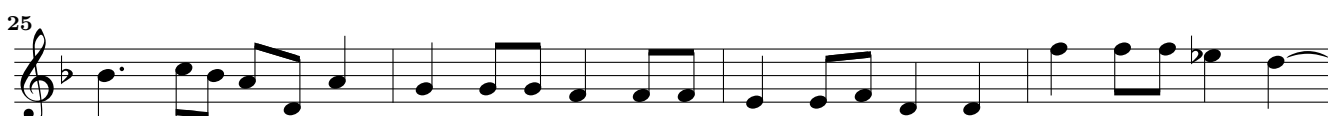


Sonata Sopra fuggi dolente

Grave



Allegro



44

47

50

54

58

62

65

69

73

78

82

Sonata Seconda à 3

Prima parte grave

7

13

19

25

30

35

40

45

49

2. Parte

Allegro

Musical score for the second part of the sonata, measures 55 to 72. The score is written in treble clef with a common time signature (C). The key signature has one sharp (F#). The tempo is marked 'Allegro'. The music consists of several lines of notes, including rests, eighth notes, and sixteenth notes, with some slurs and accents.

Terza Parte

Musical score for the third part of the sonata, measures 79 to 92. The score is written in treble clef with a common time signature (C). The key signature has one sharp (F#). The music consists of several lines of notes, including eighth notes, sixteenth notes, and quarter notes, with some slurs and accents.

Sonata Terza. Per 3 violini

Seconda parte
*Terza parte**Presto*

Sonata à 4

Allegro tutti

28

32

36

39

42

47

51

55

59

63

67

71

76

81

Passacalio à 3. & à 4.

Introdutione



Prima parte

6

13

19

26

Seconda parte

32

38

Terza parte

44

50

57

63

69

Finale

75

This page intentionally left blank.