

# PER OGNI SORTE D'STRUMENTO

Sonate da Chiesa e da Camera  
A Due, Trè, & à quattro.

Opera XXII, Venetia 1655

Biagio Marini

1594 – 1663

Published by Johan Tufvesson.

Non-commercial copying welcome

*Revision : 1.2*



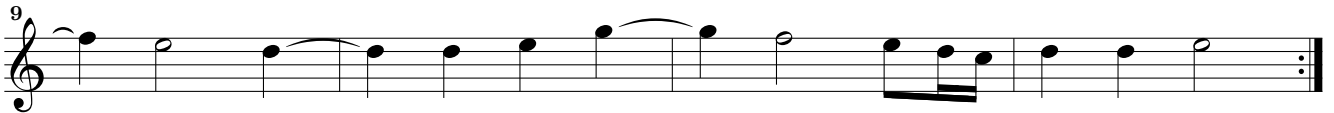
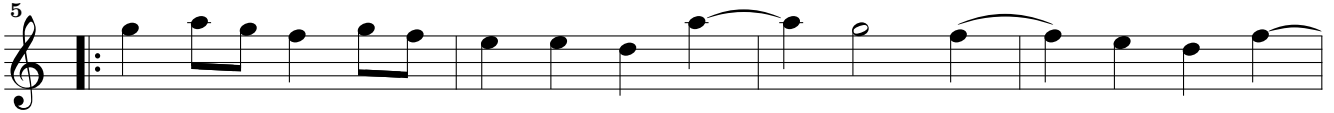
<b>Name</b>	<b>Instr.</b>	<b>Page</b>
Balletto Primo .....	2vl,b,bc	4
Balletto Secondo .....	2vl,(va),bc	5
Balletto Terzo .....	2vl,(va),bc	7
Balletto Quarto .....	2vl,(va),bc	7
Zarabanda Prima .....	2vl,va,bc	8
Zarabanda Seconda .....	2vl,va,bc	8
Zarabanda Terza .....	2vl,va,bc	9
Zarabanda Quarta .....	2vl,va,bc	9
Corrente Prima .....	2vl,va,bc	10
Corrente Seconda .....	2vl,va,bc	10
Corrente Terza .....	2vl,va,bc	11
Corrente Quarta .....	2vl,va,bc	11
Sinfonia Primo Tuono .....	2vl,va,bc	12
Sinfonia Secondo Tuono .....	2vl,va,bc	12
Sinfonia Terzo Tuono .....	2vl,va,bc	12
Sinfonia Quarto Tuono .....	2vl,va,bc	13
Sinfonia Quinto Tuono .....	2vl,va,bc	13
Sinfonia Sesto Tuono .....	2vl,va,bc	13
Sonata per due Violini ò Cornetti ....	2vl,bc	14
Sonata à Basso è Violino ò Cornetto ..	vl/c,b,bc	16
Sonata Sopra fuggi dolente .....	2vl,b,bc	18
Sonata Seconda .....	2vl,b,bc	20
Sonata Terza .....	3vl,bc	22
Sonata à 4 .....	2vl,va/tb,b,bc	23
Passacalio .....	2vl,(va),bc	24

4  
Violino Primo

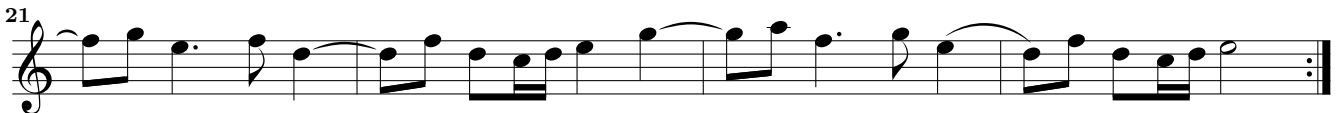
# Balletto Primo à 3

Biagio Marini (1594–1663)

*Prima parte*



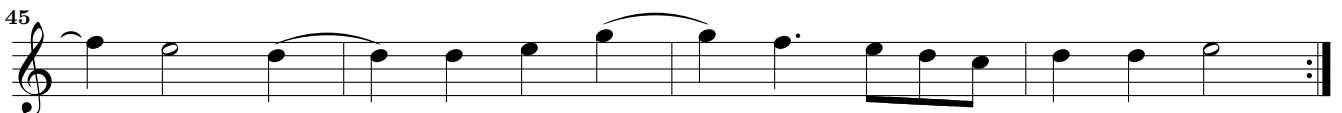
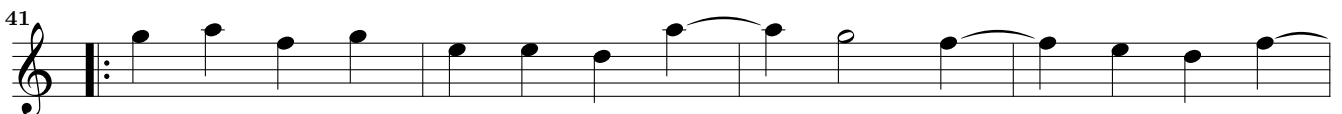
*Sec. parte*

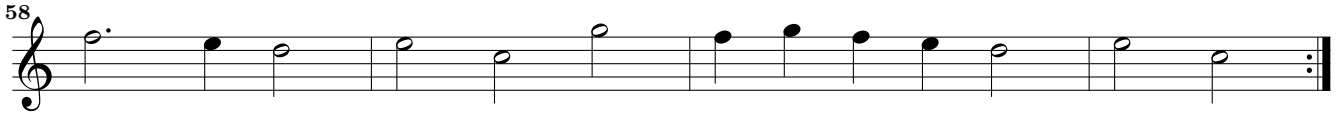
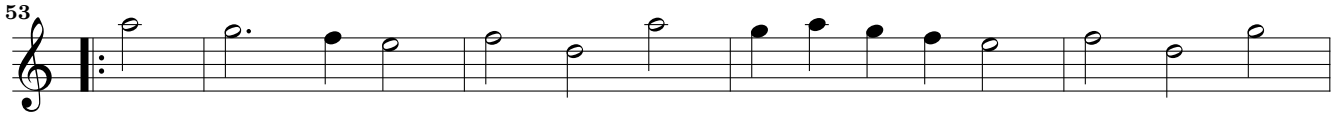
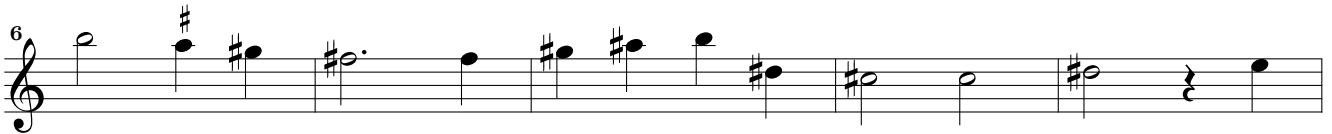
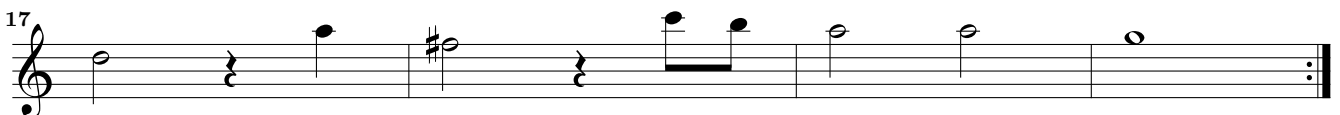
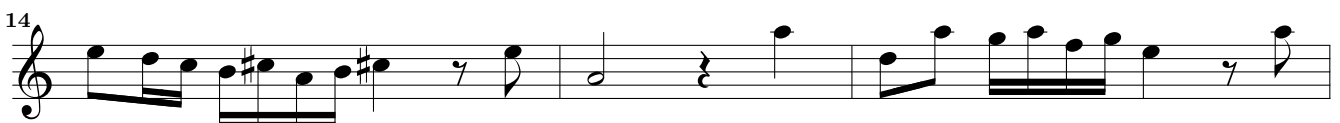


*Terza parte*



*Quarta parte come stà*



*Quinta parte* Corrente Presto**Balletto Secondo à 3. & à 4.***Entrata grave**Balletto allegro*

Musical score for *Gagliarda*, measures 6-18. The piece is in 3/2 time and G major. The notation consists of six staves of music. Measure 6 starts with a treble clef and a 3/2 time signature. The melody is written in a single line. Measures 7-18 continue the piece, with measure 18 ending with a double bar line and repeat dots.

*Corrente*

Musical score for *Corrente*, measures 1-20. The piece is in 3/4 time and G major. The notation consists of five staves of music. Measure 1 starts with a treble clef and a 3/4 time signature. The melody is written in a single line. Measures 2-20 continue the piece, with measure 20 ending with a double bar line and repeat dots.

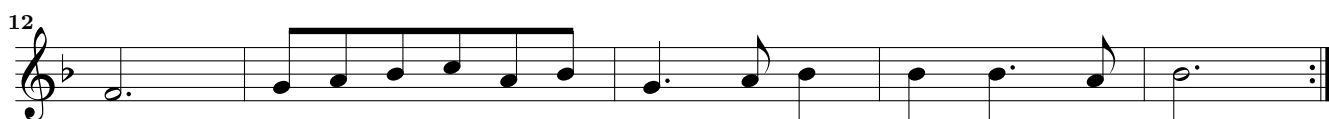
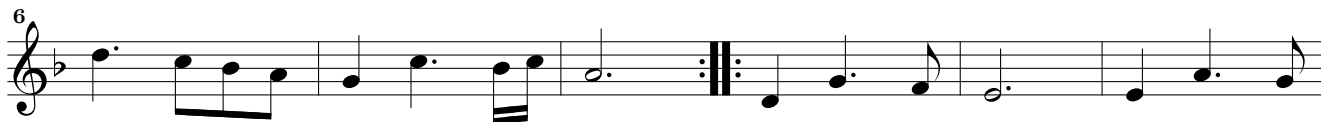
*Pretirata*

Musical score for *Pretirata*, measures 1-6. The piece is in common time (C) and B-flat major. The notation consists of two staves of music. Measure 1 starts with a treble clef and a common time signature. The melody is written in a single line. Measures 2-6 continue the piece, with measure 6 ending with a double bar line and repeat dots.

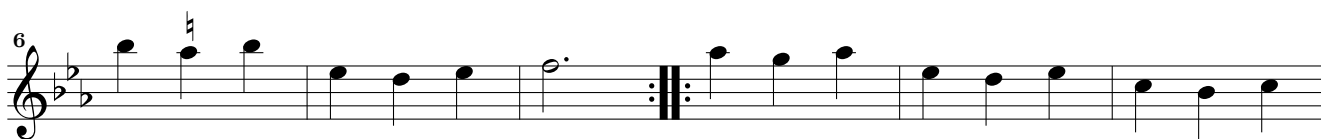
## Balletto Terzo à 3. & à 4.

## Balletto Quarto. à 3 & à 4

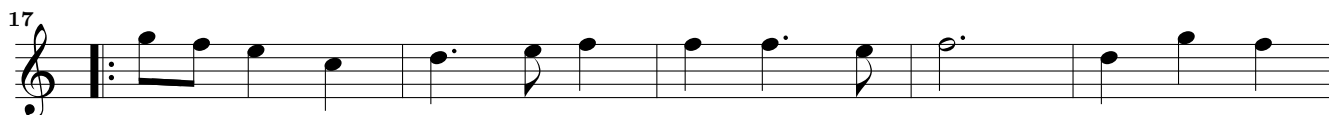
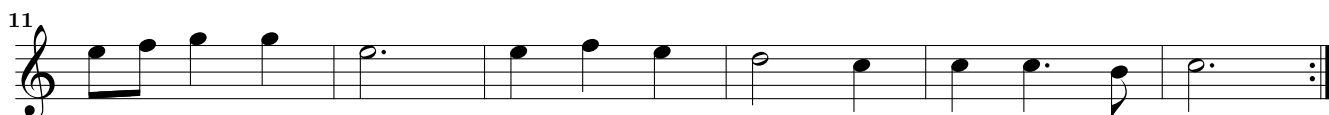
*Allemano*

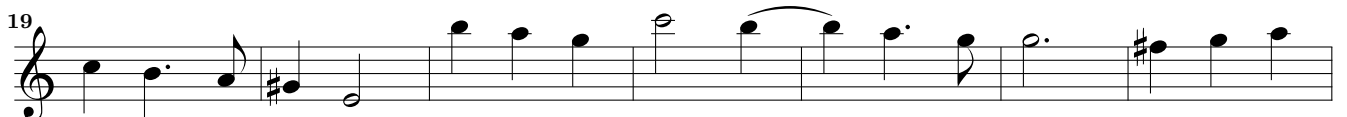
*Zarabanda Prima**Zarabanda Seconda*

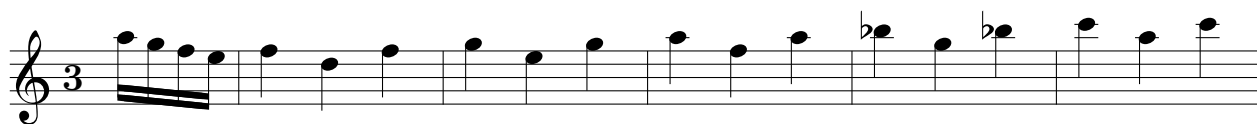




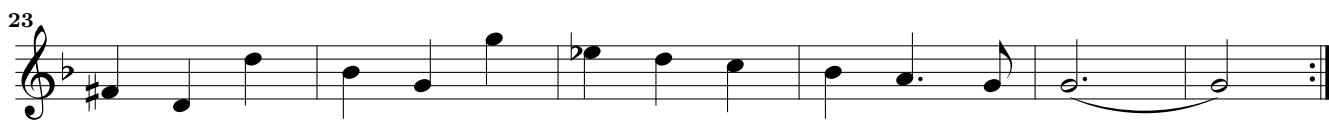
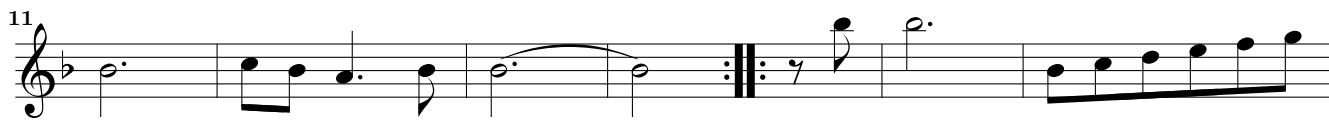
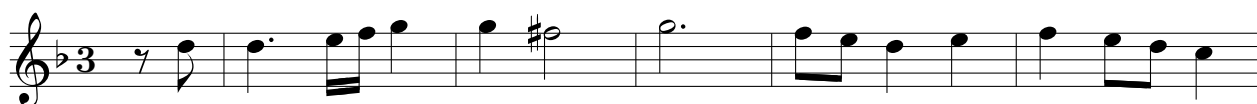
*Zarabanda Quarta*

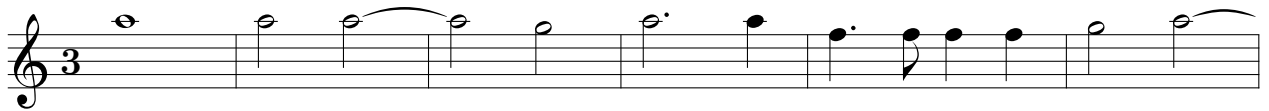
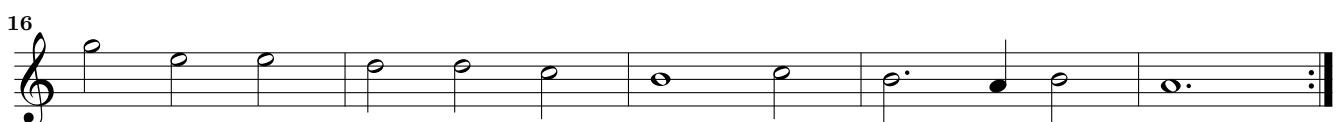
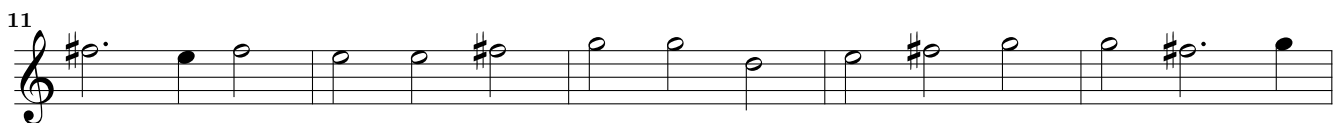


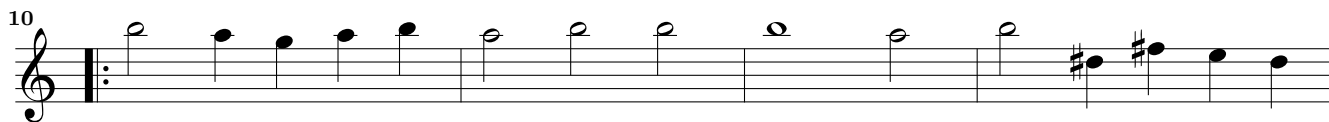
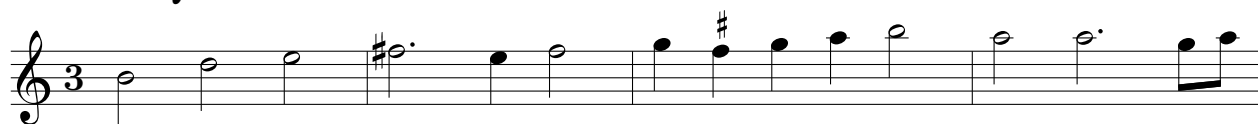
*Corrente Prima**Corrente Seconda*



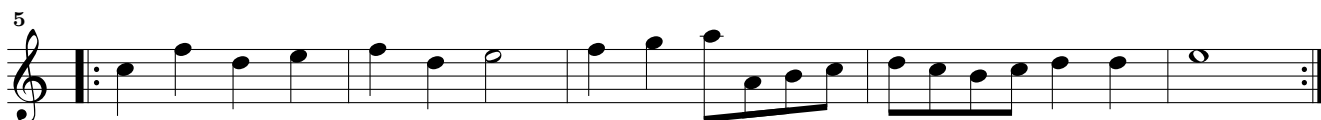
*Corrente Quarta*



Sinfonia *Primo Tuono*Sinfonia *Secondo Tuono*Sinfonia *Terzo Tuono*



Sinfonia *Quinto Tuono*

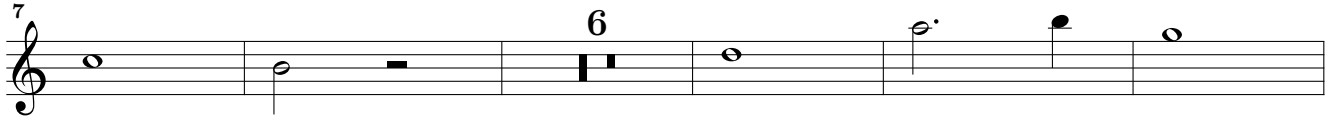


Sinfonia *Sesto Tuono*

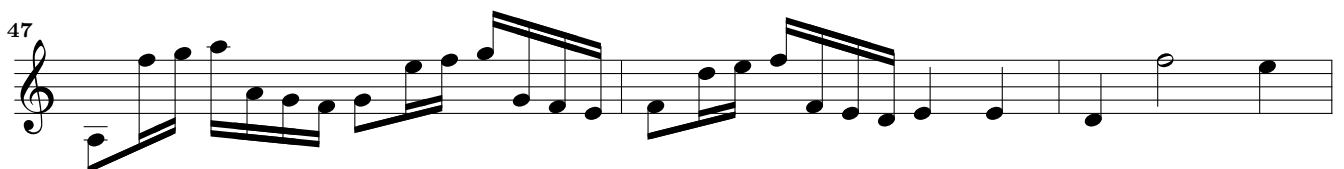
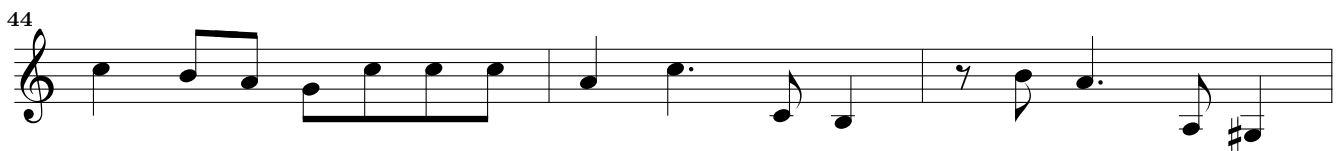
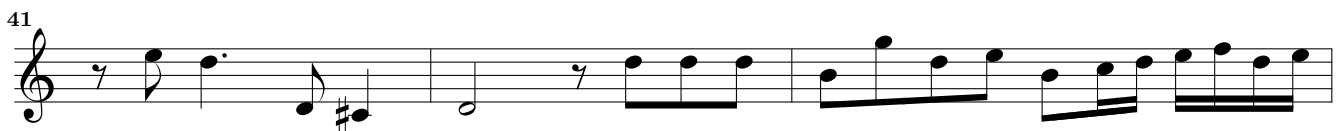
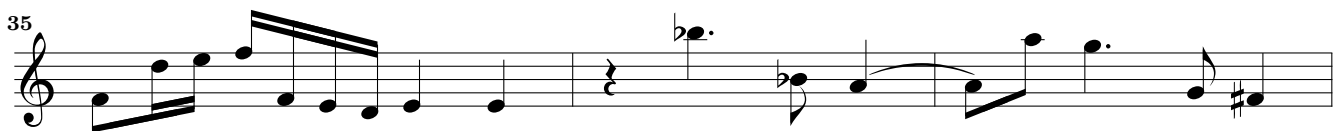


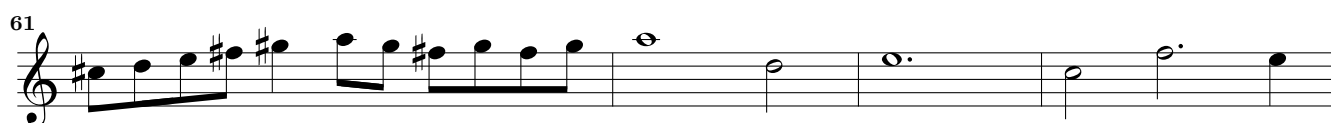
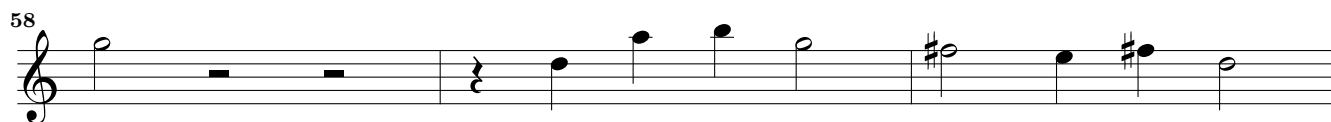
# Sonata per due Violini ò Cornetti

*Dolcemente*

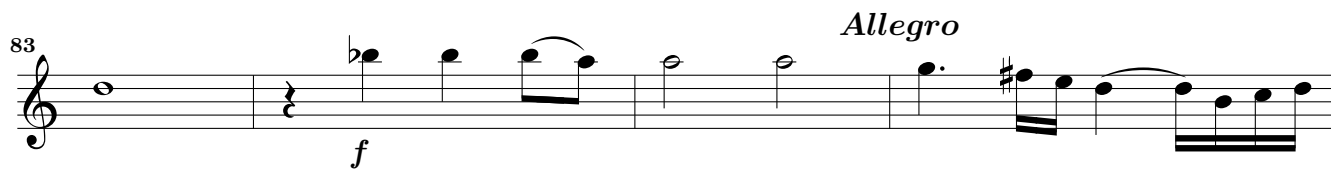
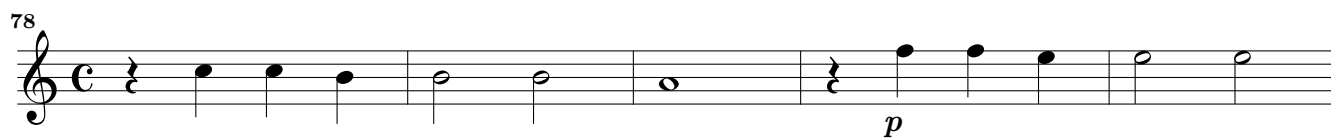


*Allegro*



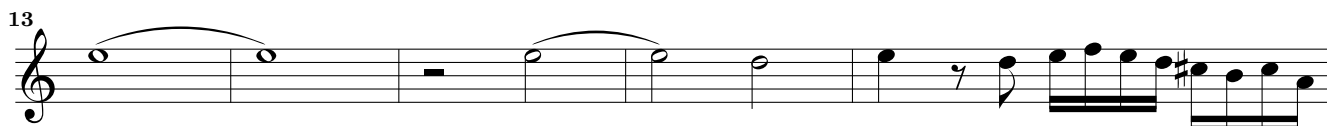


*Dolcemente*



# Sonata à Basso è Violino ò Cornetto

## *Prima Parte*



## *Seconda parte. Allegra*





17 6 Affetti

solo

28

34

*Terza Parte*

4

7

10

12

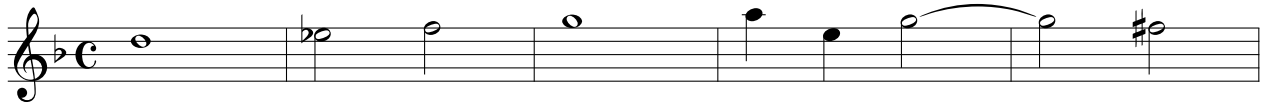
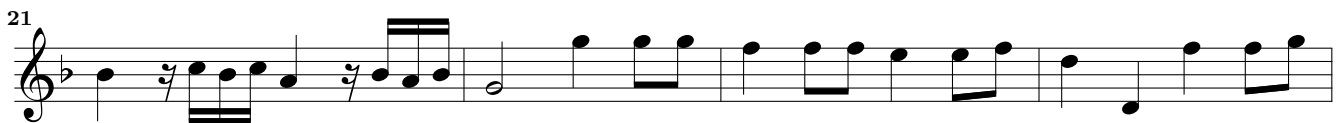
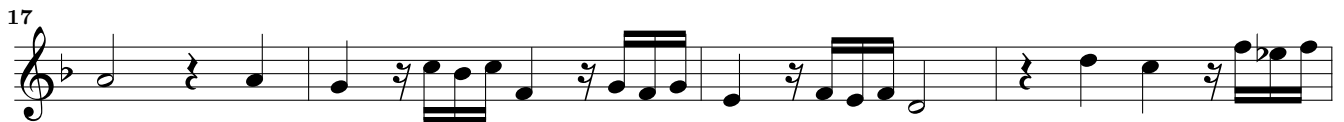
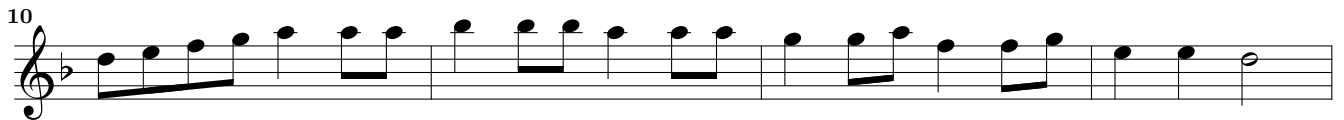
14

18

22

26

## Sonata Sopra fuggi dolente

*Grave**Allegro*

44

3

51

55

60

63

67

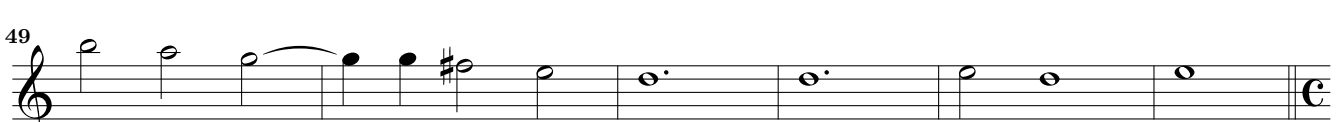
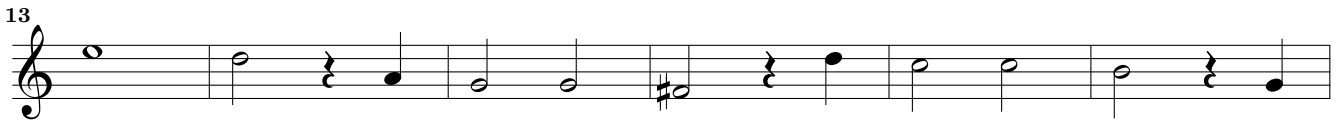
70

73

78

83

## Sonata Seconda à 3

*Prima parte* grave

## 2. Parte

*Allegro**Terza Parte*

## Sonata Terza. Per 3 violini

2

6

11

15

*Seconda parte*

20

23

27

*Terza parte* *Presto*

32

38

42

48

53

58

63

## Sonata à 4

4 Solo 2

12

18

24

*Allegro tutti*

29

33

38

42

47

53

59

65

71

76

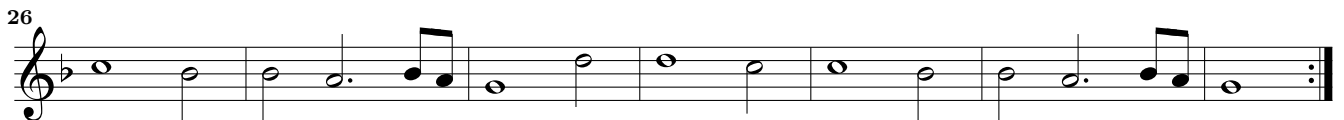
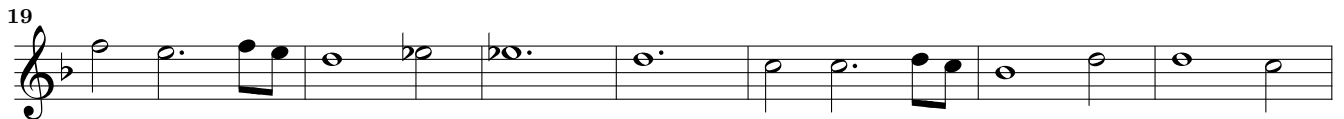
81

# Passacalio à 3. & à 4.

## Introdutione



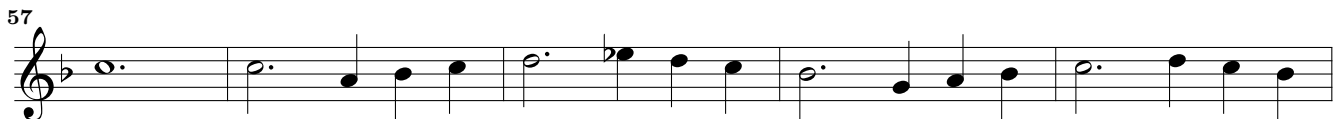
## Prima parte



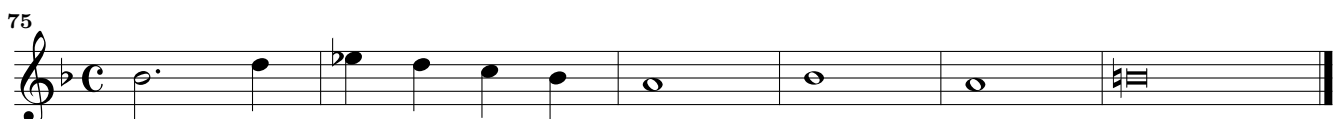
## Seconda parte



## Terza parte



## Finale





This page intentionally left blank.