

PER OGNI SORTE D'STRUMENTO

Sonate da Chiesa e da Camera
A Due, Trè, & à quattro.

Opera XXII, Venetia 1655

Biagio Marini
1594 – 1663

Published by Johan Tufvesson.

Non-commercial copying welcome

Revision : 1.3

Name	Instr.	Page
Balletto Primo	2vl,b,bc	3
Balletto Secondo	2vl,(va),bc	4
Balletto Terzo	2vl,(va),bc	6
Balletto Quarto	2vl,(va),bc	6
Zarabanda Prima	2vl,va,bc	8
Zarabanda Seconda	2vl,va,bc	8
Zarabanda Terza	2vl,va,bc	9
Zarabanda Quarta	2vl,va,bc	9
Corrente Prima	2vl,va,bc	10
Corrente Seconda	2vl,va,bc	10
Corrente Terza	2vl,va,bc	11
Corrente Quarta	2vl,va,bc	11
Sinfonia Primo Tuono	2vl,va,bc	12
Sinfonia Secondo Tuono	2vl,va,bc	12
Sinfonia Terzo Tuono	2vl,va,bc	12
Sinfonia Quarto Tuono	2vl,va,bc	13
Sinfonia Quinto Tuono	2vl,va,bc	13
Sinfonia Sesto Tuono	2vl,va,bc	13
Sonata per due Violini ò Cornetti	2vl,bc	14
Sonata à Basso è Violino ò Cornetto ..	vl/c,b,bc	16
Sonata Sopra fuggi dolente	2vl,b,bc	18
Sonata Seconda	2vl,b,bc	20
Sonata Terza	3vl,bc	22
Sonata à 4	2vl,va/tb,b,bc	23
Passacalio	2vl,(va),bc	24

Balletto Primo à 3

Biagio Marini (1594–1663)

Prima parte

1 B E B G A E D
 4 G A B Z G H O I I C E B G
 8 O I C E B G A. A B E B G A B

Sec. parte

13 B E B G A E D G A B
 17 Z G H O I I C E B G O I C E
 21 B G A. A B E B G A B

Terza parte

25 B E B G A E D G A B
 29 Z G H O I I C E B G O I C E
 33 B G A. A B E B G A B

Quarta parte come stà

37 B E B G A E D G A B
 41 Z G H O I I C E B G O I C E
 45 B G A. A B E B G A B

Quinta parte Corrente Presto

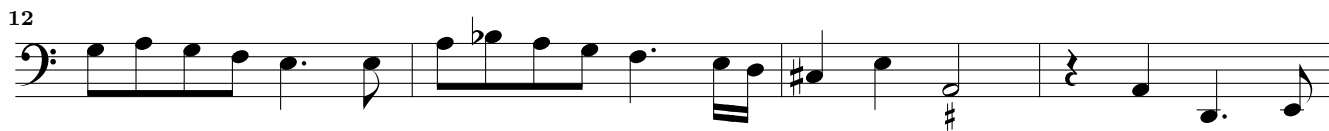
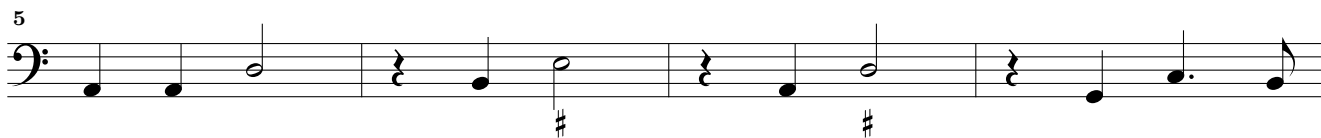
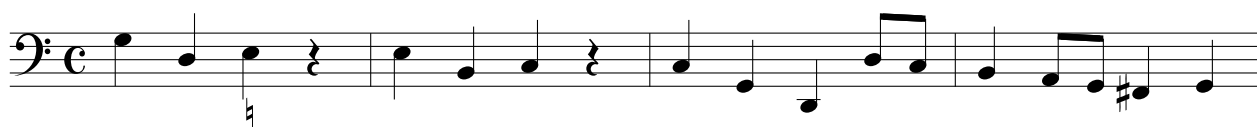
49 B A B G A B G O I G
 56 O I E B G A B 6 6 G # A b4 B 6

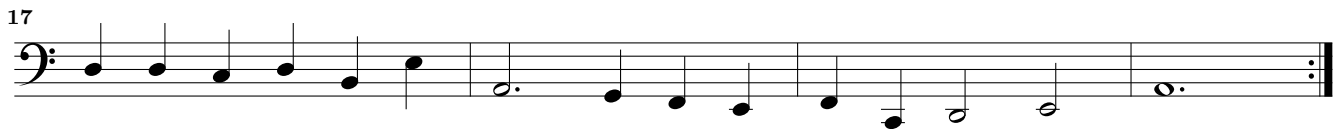
Balletto Secondo à 3. & à 4.

Entrata grave

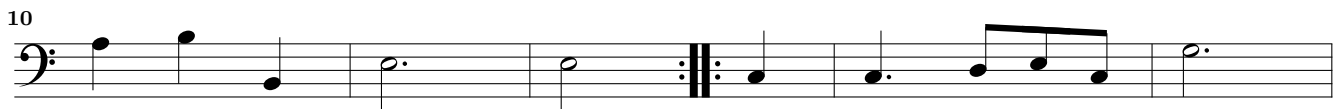


Balletto allegro

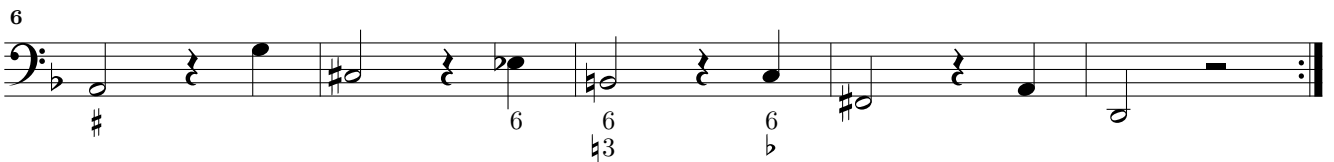




Corrente



Pretirata



Balletto Terzo à 3. & à 4.

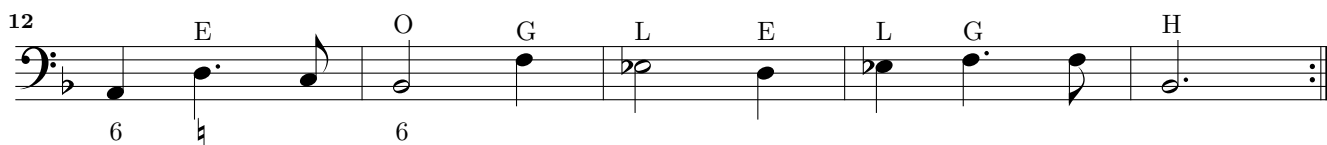
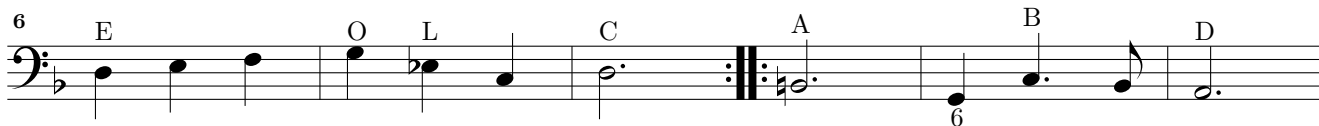
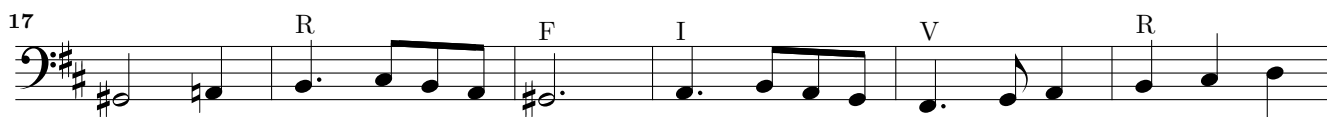
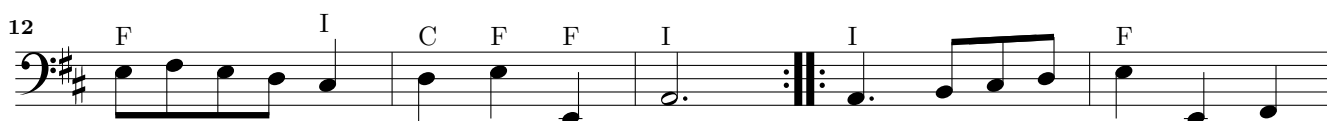
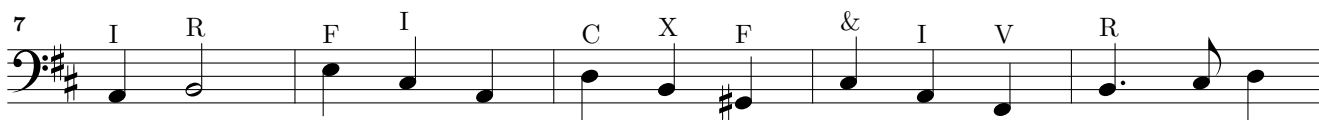
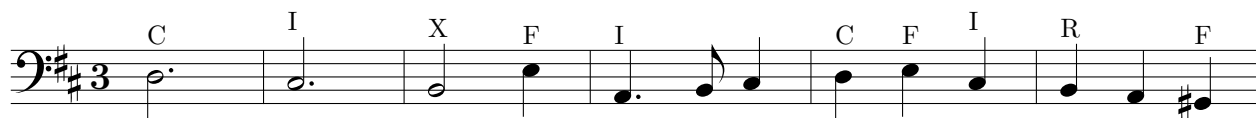
Musical score for Balletto Terzo à 3. & à 4. in bass clef, common time. The score consists of four staves of music with various notes and rests. Above the notes are letters A, B, C, G, F, I, G, O, I, C, A, B, I, C, I, I, C, F., F., I, C, A, B, A, D, A, D, A, B, C, A.

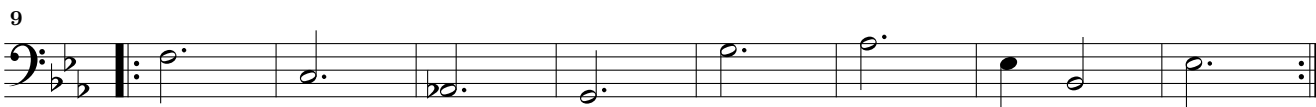
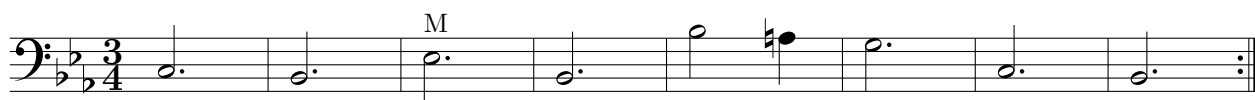
Balletto Quarto. à 3 & à 4

Allemano

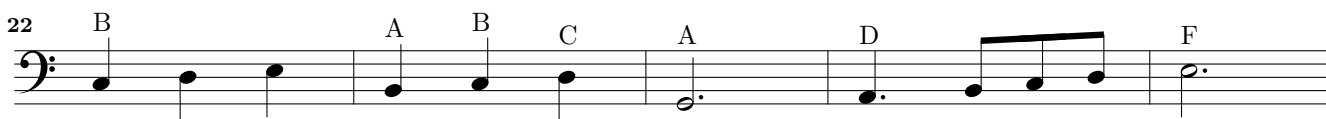
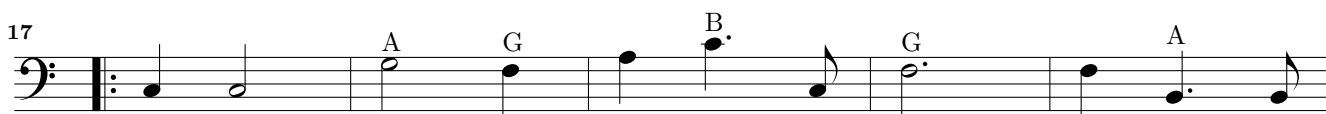
Musical score for Balletto Quarto. à 3 & à 4. in bass clef, common time. The score consists of three staves of music with various notes and rests. Above the notes are letters B, G, B, E, B, A, B, A, B, B, C, A, C, A, C, A, C, A, C, A, B, A, B.

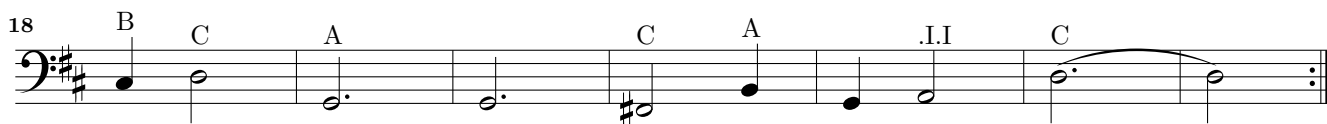
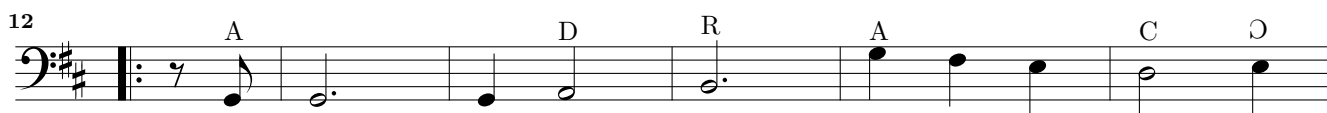
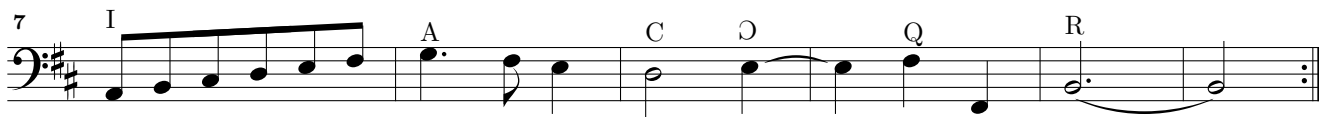
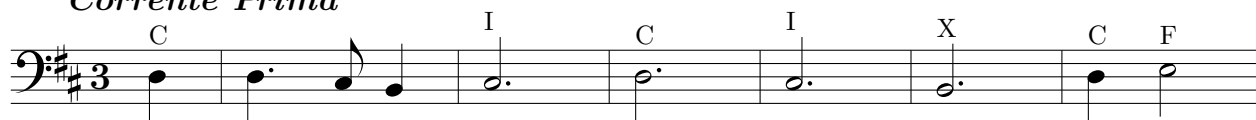
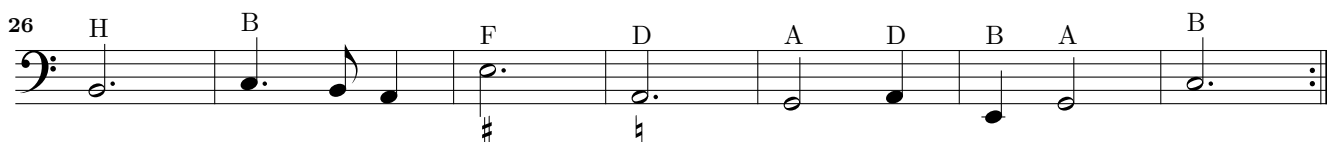
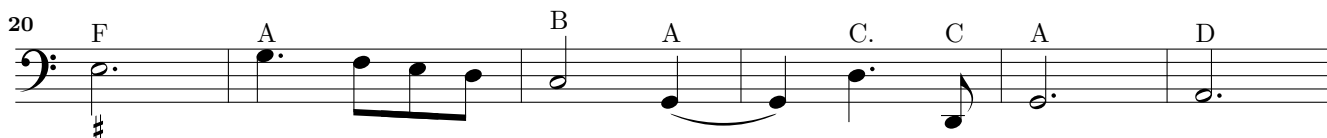
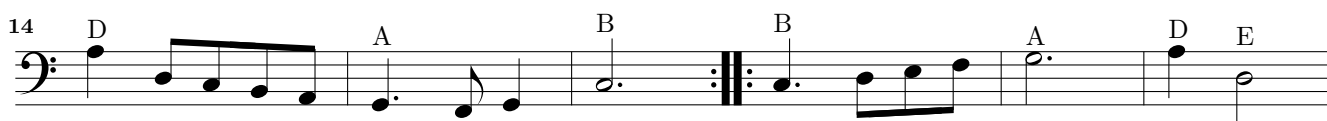
This page intentionally left blank.

Zarabanda Prima*Zarabanda Seconda*



Zarabanda Quarta



Corrente Prima*Corrente Seconda*

Musical score for *Corrente Terza*, Basso Continuo part, measures 1-30. The score is in 3/4 time and features a series of notes with various accidentals and fingerings. The notes are: 1. E, 2. B, 3. G, 4. O, 5. D, 6. G, 7. B, 8. G, 9. E, 10. B, 11. A, 12. D, 13. B, 14. E, 15. F, 16. I, 17. #F, 18. I, 19. #C, 20. A, 21. B, 22. G, 23. E, 24. H.B., 25. B, 26. G, 27. C, 28. I, 29. C, 30. A. The piece concludes with a double bar line and repeat dots.

Corrente Quarta

Musical score for *Corrente Quarta*, Basso Continuo part, measures 1-22. The score is in 3/4 time and features a series of notes with various accidentals and fingerings. The notes are: 1. O, 2. L, 3. C, 4. A, 5. E, 6. B, 7. G, 8. M, 9. H, 10. M, 11. H, 12. O, 13. G, 14. O, 15. C, 16. A, 17. G, 18. I, 19. C, 20. A, 21. M, 22. C, 23. O, 24. C.C, 25. A. The piece concludes with a double bar line and repeat dots.

Sinfonia *Primo Tuono*

Measures 1-12 of Sinfonia *Primo Tuono*. The score is in bass clef with a 3/4 time signature. The notes are: E, I, E, O, I, H, G, O, G (measures 1-6); BB., G, B, I, E, F, G, O (measures 7-12). Fingering numbers 4, 6, 5 are shown under the first measure of the second line. A double bar line with repeat dots is at the end of measure 10. A sharp sign is at the beginning of measure 13.

Sinfonia *Secondo Tuono*

Measures 1-11 of Sinfonia *Secondo Tuono*. The score is in bass clef with a common time signature. The notes are: H, L, G, O (measures 1-4); L, C, A, F, G, E, L (measures 5-11). Fingering numbers 6, 6, #6 are shown under the first measure of the first line. A sharp sign is at the beginning of measure 5. A double bar line with repeat dots is at the end of measure 6. A 7-measure rest is shown under measure 7. A double bar line with repeat dots is at the end of measure 11.

Sinfonia *Terzo Tuono*

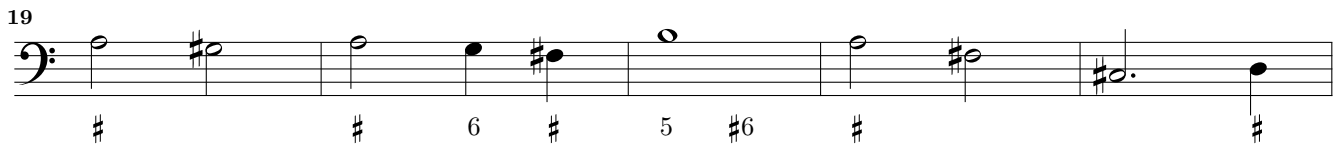
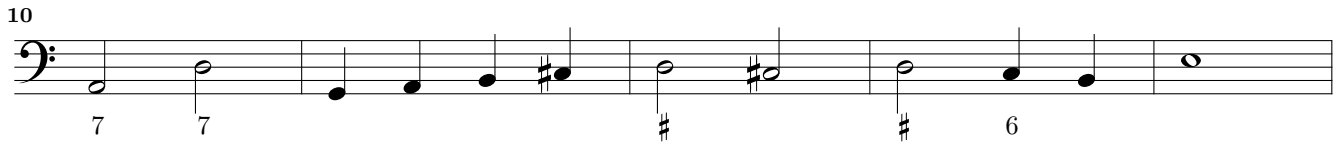
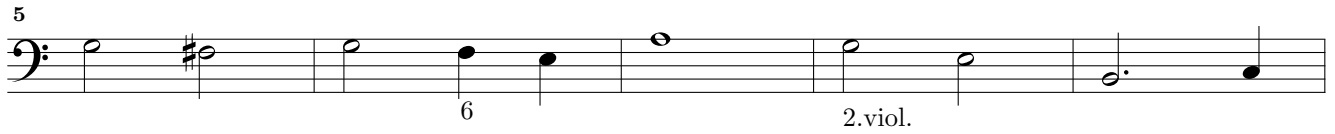
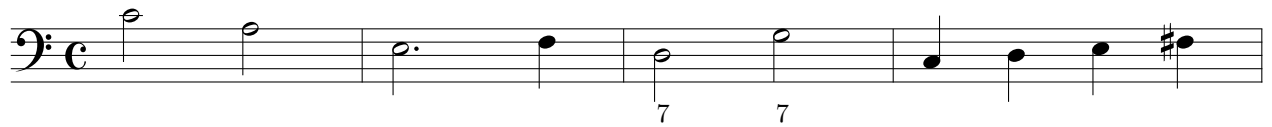
Measures 1-15 of Sinfonia *Terzo Tuono*. The score is in bass clef with a 3/4 time signature. The notes are: D., E., A., B, G, E, FF., I (measures 1-8); +, R, +, A, B, CC. (measures 9-15). A sharp sign is at the beginning of measure 16. A double bar line with repeat dots is at the end of measure 15.

Sinfonia *Quinto Tuono*

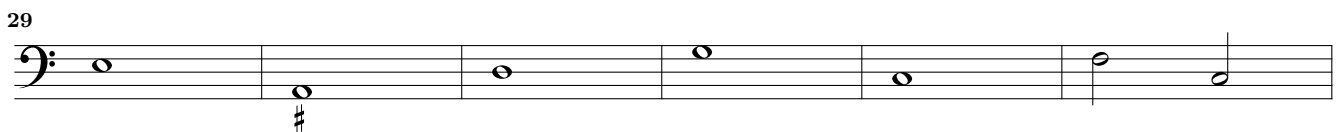
Sinfonia *Sesto Tuono*

Sonata per due Violini ò Cornetti

Dolcemente



Allegro



50

55

58

61

64

67

71

74

Dolcemente

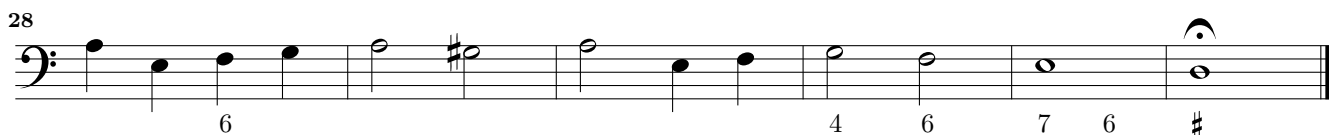
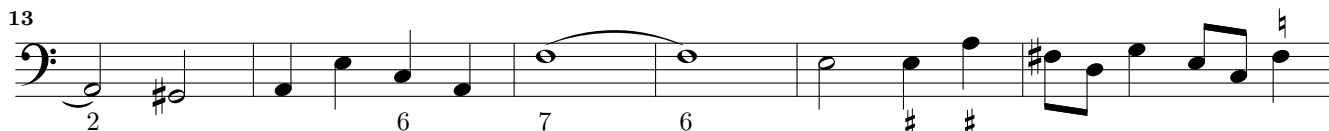
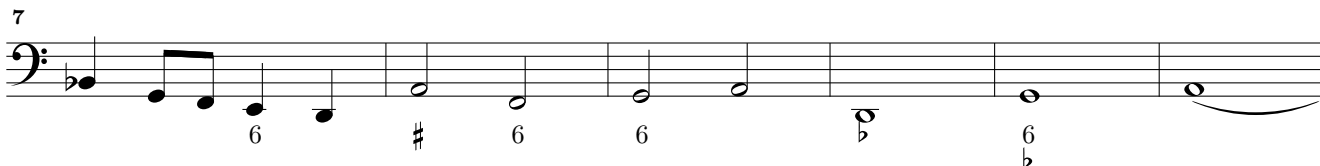
78

Allegro

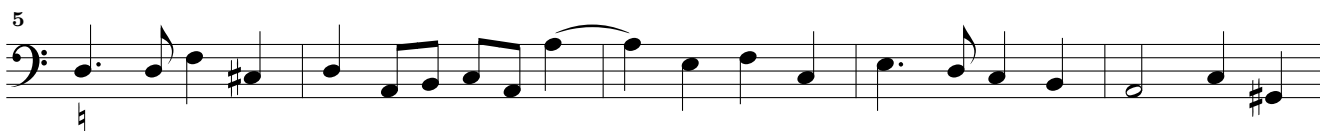
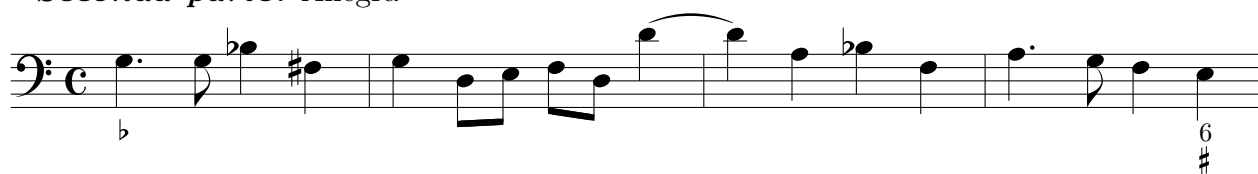
84

Sonata à Basso è Violino ò Cornetto

Prima Parte



Seconda parte. Allegra



19

Basso solo

Viol. solo

27

33

5 6

Terza Parte

4

8

12

6

17

6

4 3

22

6 #

26

Sonata Sopra fuggi dolente

Grave

6 6 b6 6 6 5

Allegro

6 b

2

6

6

6

44

48

51

55

58

63

68

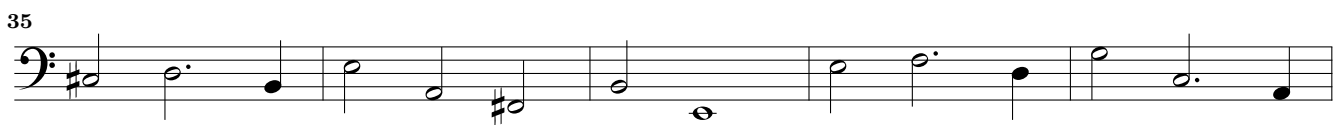
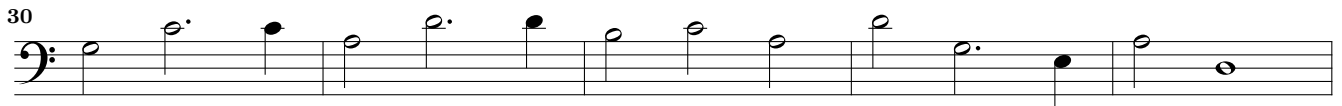
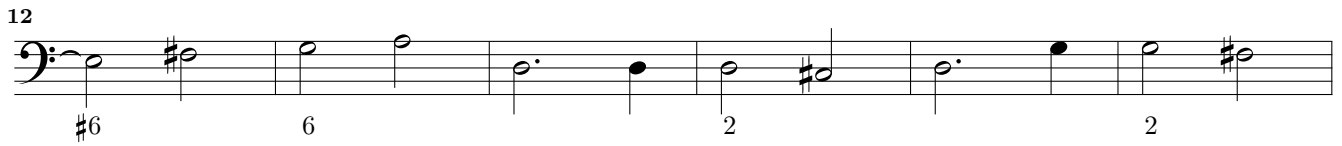
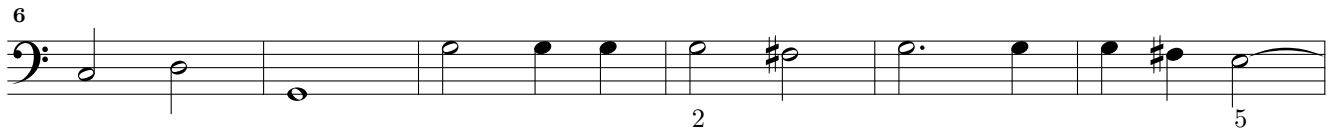
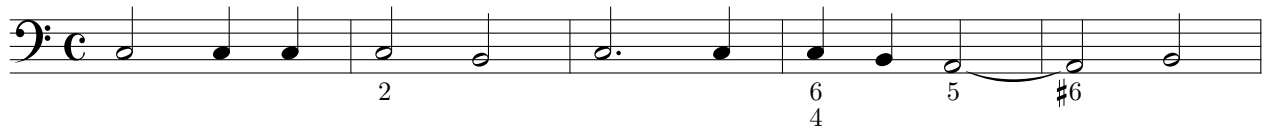
73

78

82

Sonata Seconda à 3

Prima parte grave



2. Parte

Allegro

55

59

62

66

70

73

Terza Parte

79

83

88

92

Sonata Terza. Per 3 violini

4

9

14

Seconda parte

20

25

Terza parte

32

37

41

46

50

55

59

63

Presto

Sonata à 4

B. solo

viol.

8

15

22

Allegro tutti

29

35

40

47

52

57

62

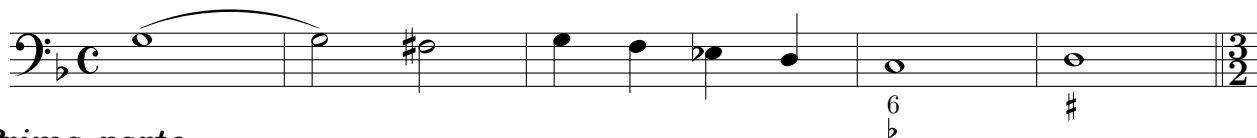
66

71

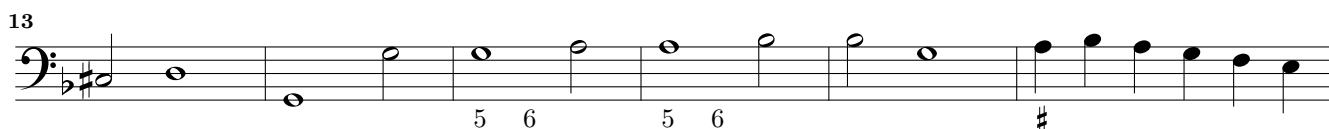
78

Passacalio à 3. & à 4.

Introdutione



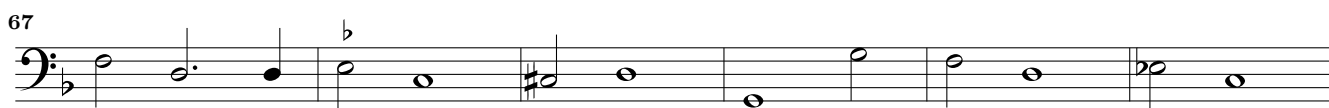
Prima parte



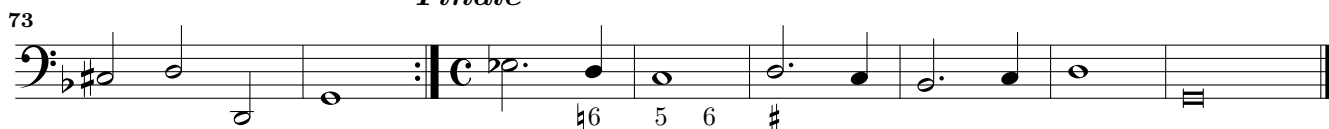
Seconda parte



Terza parte



Finale



This page intentionally left blank.