

# N O E L S

EN TRIO

Avec un Carillon

Pour Les Flûtes, Violons et Hautbois

Premier Livre

Paris

Michel-Richard de Lalande

1657 – 1726

Published by Johan Tufvesson.

Non-commercial copying welcome

*Revision : 1.1*



<b>Name</b>	<b>Page</b>
Symphonie - Ou s'en vont ces gays Bergers .....	4
Ritournelle - Une jeune pucelle .....	6
Voyey le jour Solemnel .....	7
Laissez paître vos bêtes .....	8
Les Bourgeois de Châtres .....	9
Ah ma voysine .....	10
Sortons de nos chaumieres .....	11
Elle alloit au Temple .....	12
C'est a la venue de Noel .....	12
Or nous dites Marie .....	13
Josephe est bien Marie .....	14
Je me suis levé par une matiné .....	15
A minuit fut fait un Reveil .....	16
Vous qui désiré sans fin .....	18
Notre bon pere Noé .....	19
Carillon .....	20

# Noels en Trio

Michel-Richard de Lalande  
(1657–1726)

## Symphonie

Musical score for the first section of "Noels en Trio". The score is written for a single melodic line in treble clef, key of D major, and common time. It consists of seven staves of music. The first staff begins with a whole note G4, followed by a quarter rest, then a quarter note A4, and a quarter note B4. The second staff starts with a quarter note C5, followed by a quarter note D5, and a quarter note E5. The third staff begins with a quarter note F5, followed by a quarter note G5, and a quarter note A5. The fourth staff starts with a quarter note B5, followed by a quarter note C6, and a quarter note D6. The fifth staff begins with a quarter note E6, followed by a quarter note F6, and a quarter note G6. The sixth staff starts with a quarter note A6, followed by a quarter note B6, and a quarter note C7. The seventh staff begins with a quarter note D7, followed by a quarter note E7, and a quarter note F7. The piece concludes with a double bar line and a 2-measure rest.

*Tous*

6 *Trio*

11

15 *Tous*

19 *Trio*

23

27 *Tous*

## Ou s'en vont ces gays Bergers

Musical score for the second section of "Noels en Trio". The score is written for a single melodic line in treble clef, key of D major, and 2/4 time. It consists of five staves of music. The first staff begins with a quarter note G4, followed by a quarter note A4, and a quarter note B4. The second staff starts with a quarter note C5, followed by a quarter note D5, and a quarter note E5. The third staff begins with a quarter note F5, followed by a quarter note G5, and a quarter note A5. The fourth staff starts with a quarter note B5, followed by a quarter note C6, and a quarter note D6. The fifth staff begins with a quarter note E6, followed by a quarter note F6, and a quarter note G6. The piece concludes with a double bar line and a 3-measure rest.

*Gay*

32 *Trio* *Tous*

37 *Trio*

42 *p*

47 *Tous*

52 *p*

57 *Gay*

63

69

75

80 *Double*

84

89

92

96

100

?

**Ritournelle**

Lalande - Noels en Trio - Premier Dessus

*Lentement*

105 

*Trio*

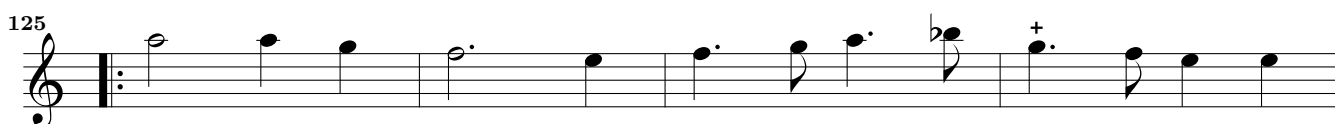
110 

**Une jeune pucelle***un peut gay*

116 

*Tous*

121 

125 

129 

*Double*

133 

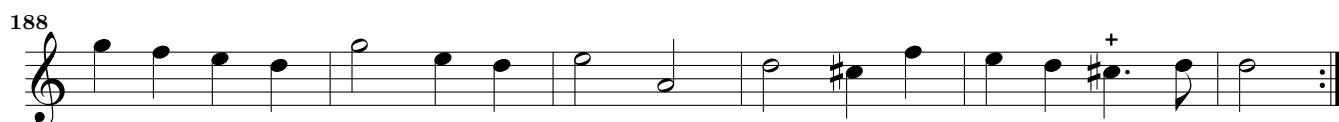
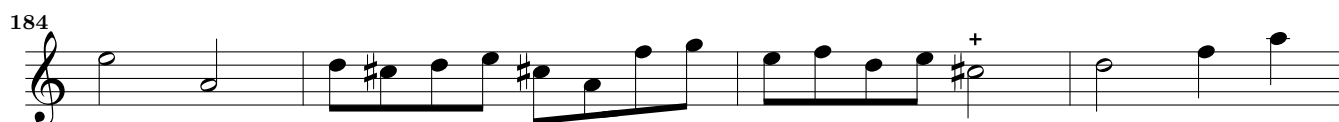
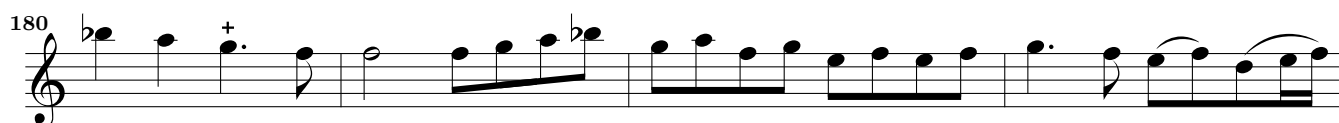
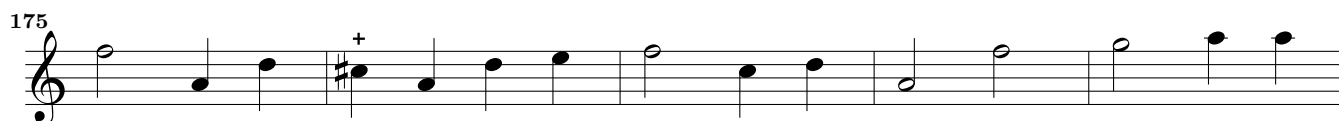
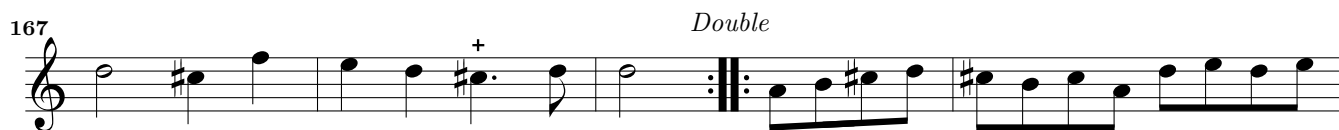
137 

142 

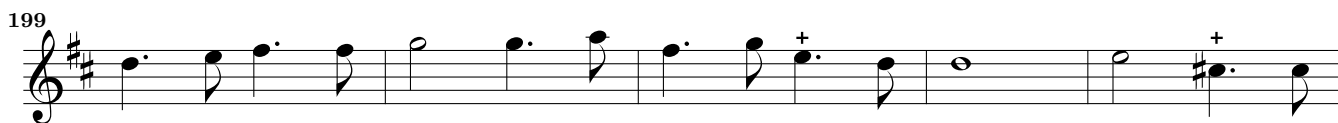
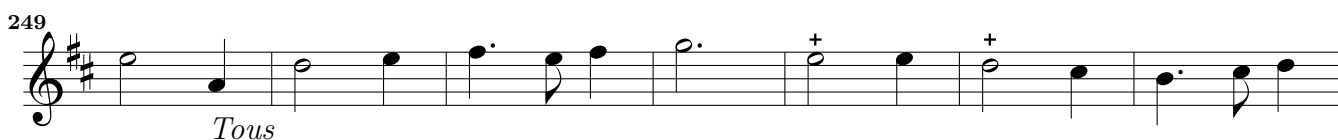
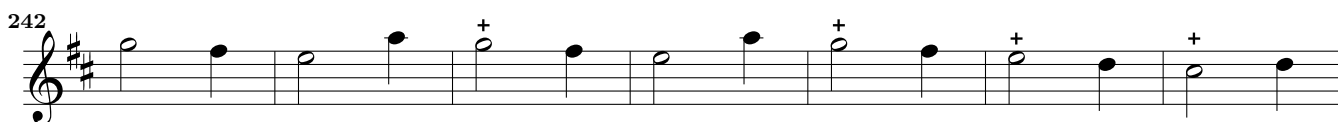
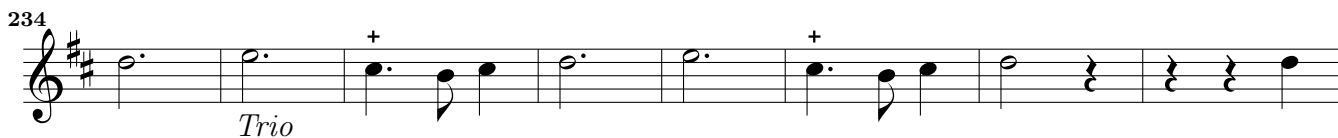
146 

151 

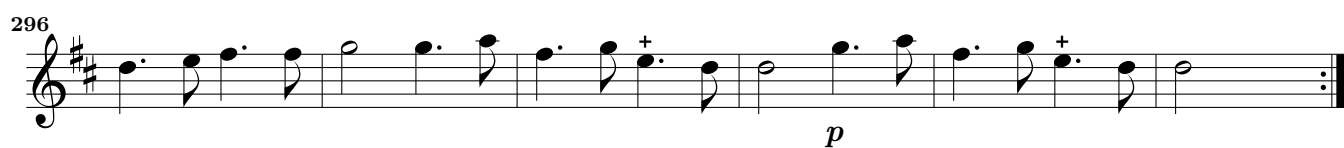
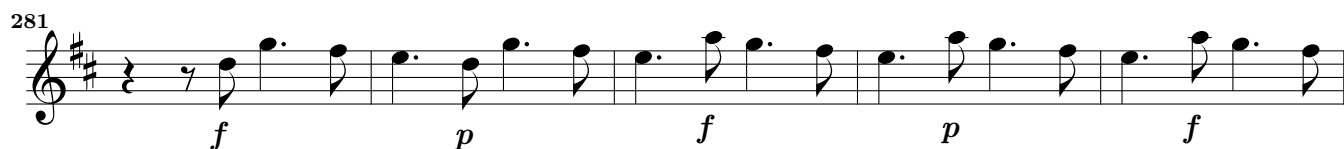
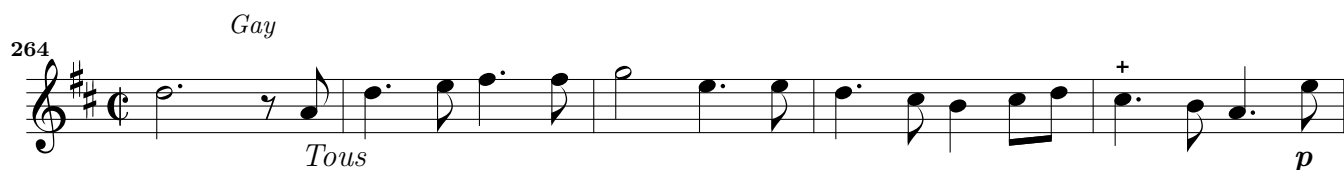
## Voyey le jour Solemnel

*Gay*

## Laissez paître vos bêtes

*Gay**Un peut Gay*

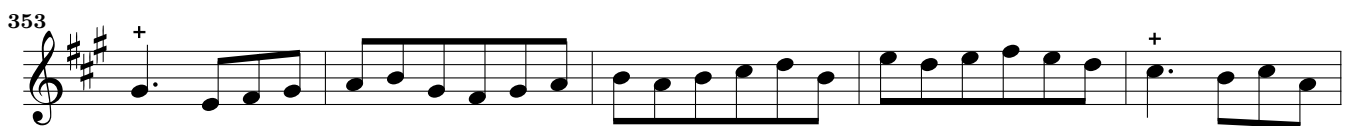
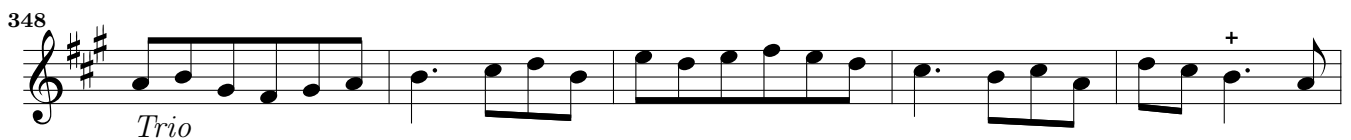
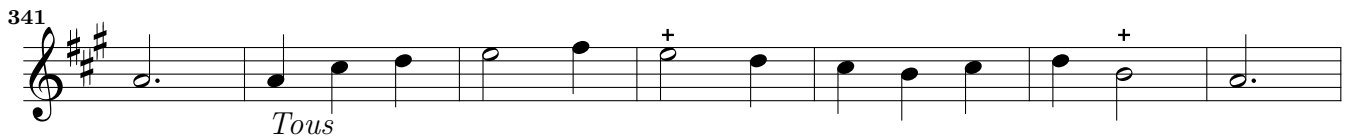
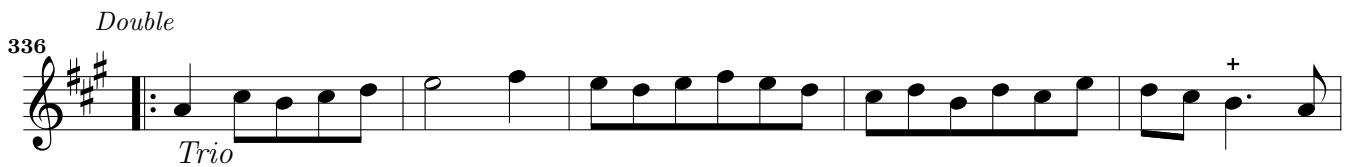
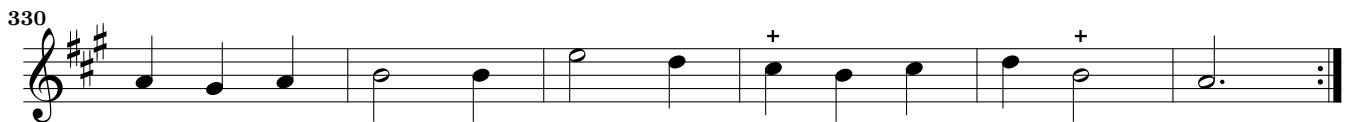




### Les Bourgeois de Châtres



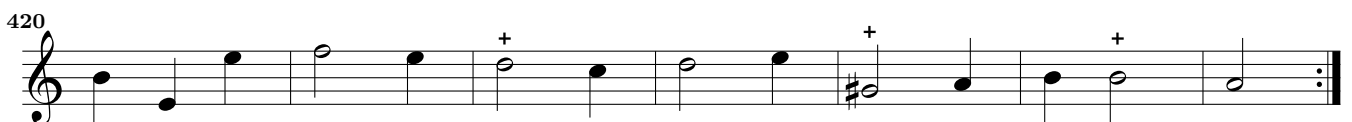
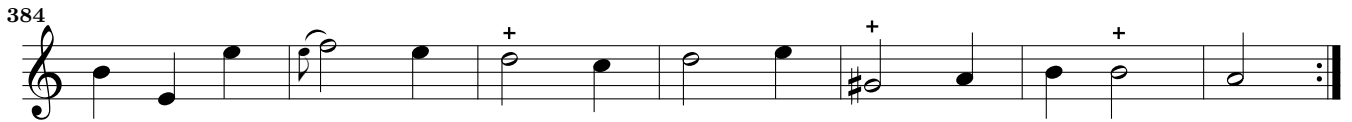
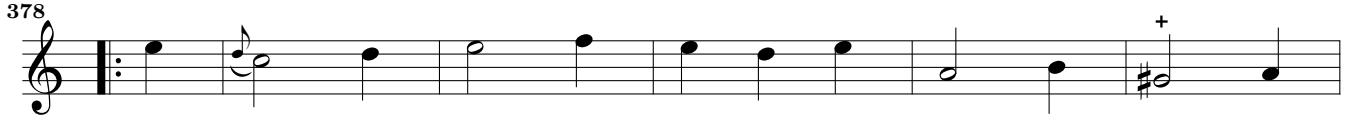
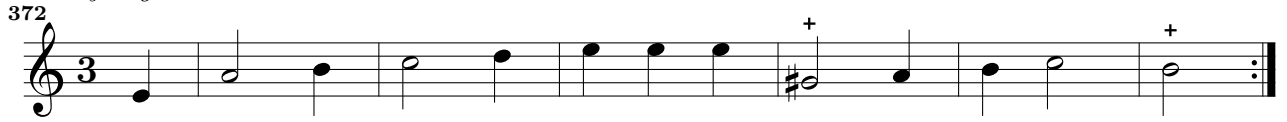
## Ah ma voisine

*Lalande - Noels en Trio - Premier Dessus**Gay*

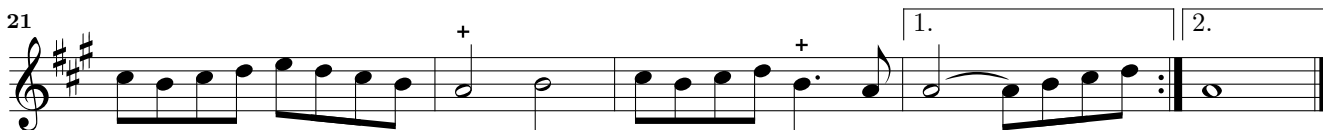
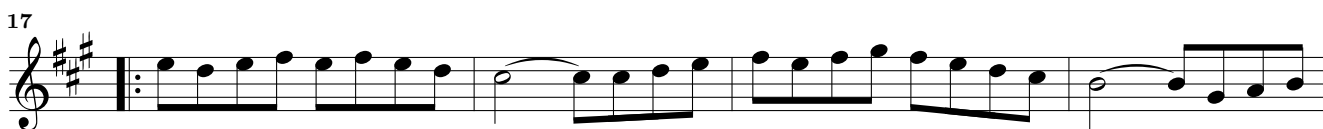
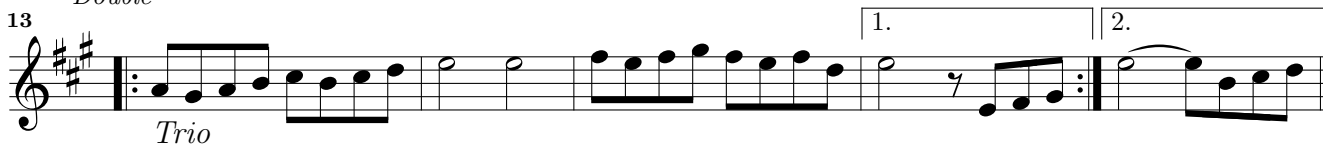
Lalande - Noels en Trio - Premier Dessus

Sortons de nos chaumières

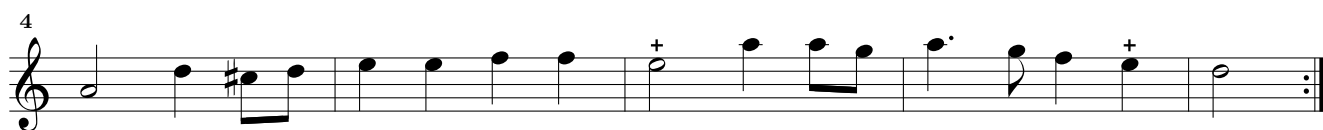
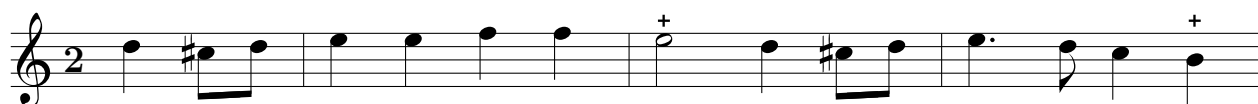
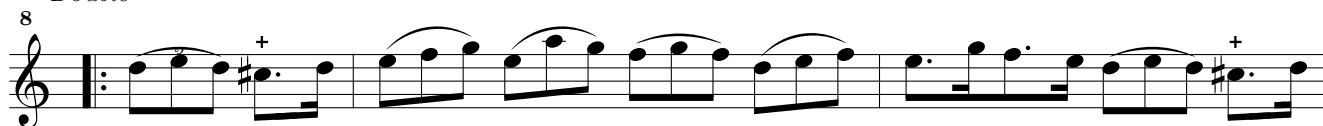
Gay et gracieux



## Elle alloit au Temple

*Gay**Double*

## C'est a la venue de Noel

*Double*

14

*Trio*

17

*Trio*

21

*Trio*

24

*Tous*

28

*Trio*

## Or nous dites Marie

*Lentement*

*Tous* *Trio*

6

*Tous*

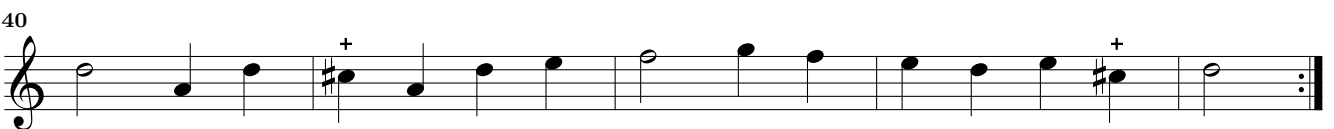
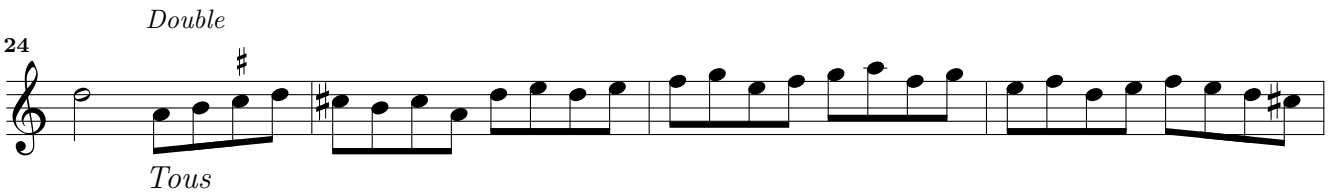
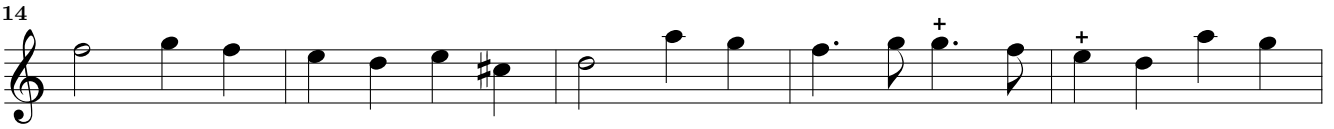
12

*Trio*

18

*Trio*

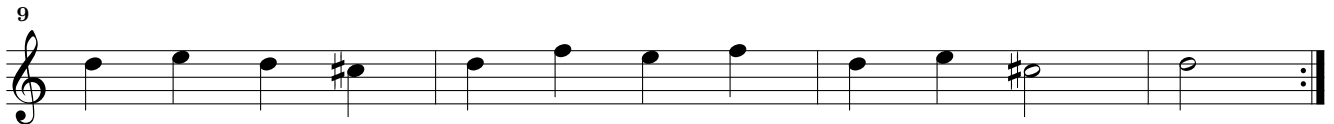
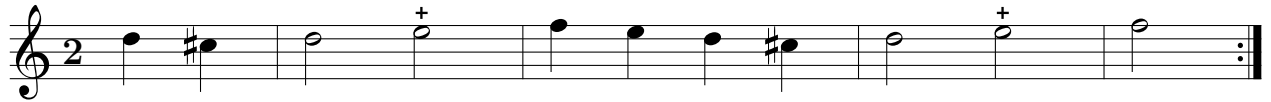
*Lalande - Noels en Trio - Premier Dessus*  
**Joseph est bien Marie**  
*Gay*



Je me suis levé par une matiné  
*Un peut Gay*

*Lalande - Noels en Trio - Premier Dessus*

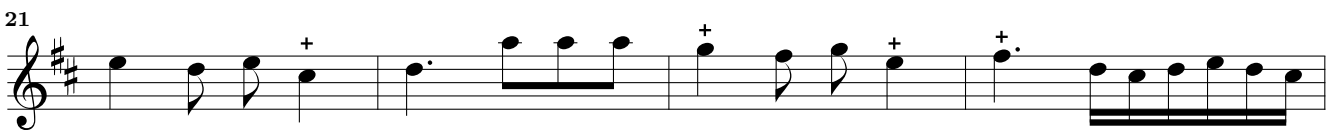
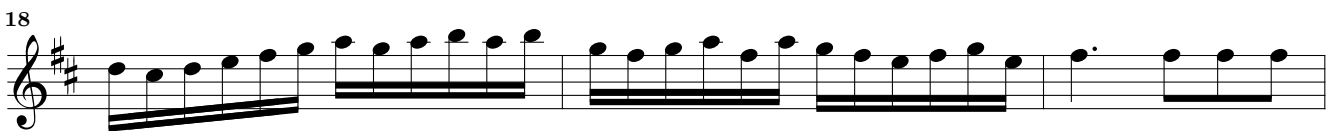
15



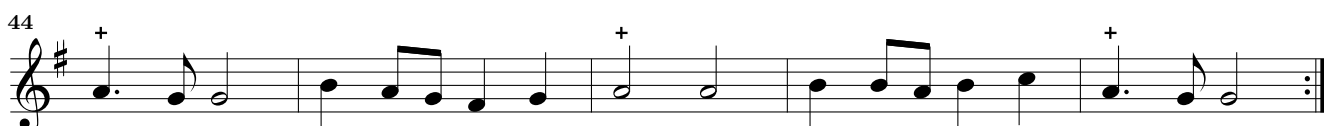
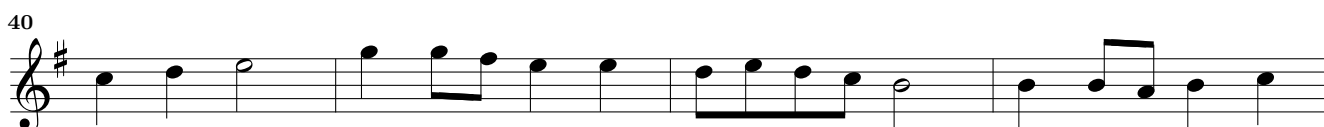
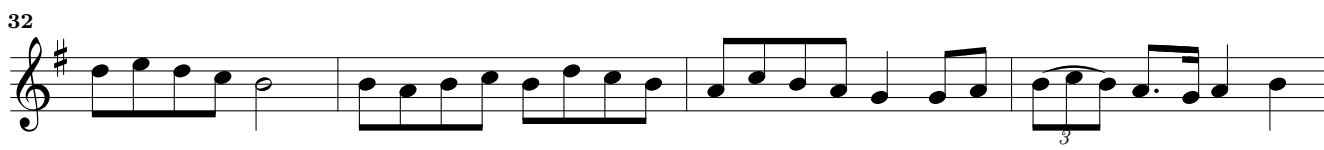
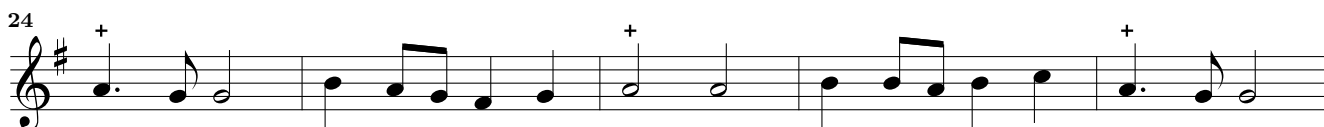
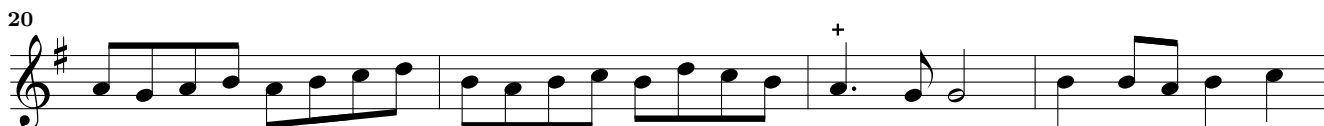
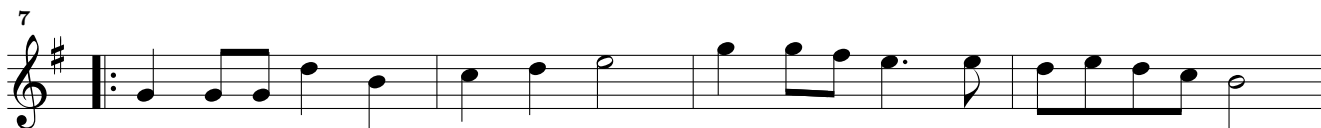
*Double*



## A minuit fut fait un Reveil





*Un peut gay**Trio*

*Lalande - Noels en Trio - Premier Dessus*  
**Vous qui désiré sans fin**

*Gay*

8 *Tous*

16 *Trio* *f*

24 *Trio* *p*

31 *Double*

38 *Double*

44

50 *p*

57 *f*

62

66

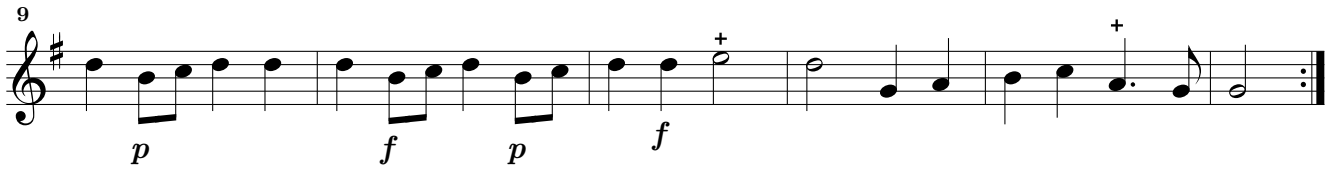
73

Notre bon pere Noe

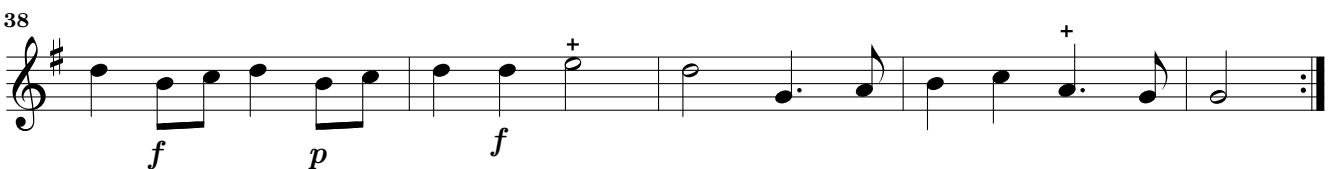
Lalande - Noels en Trio - Premier Dessus

19

Gay



Double



# Carillon

*Un peu Gay*

*Lalande - Noels en Trio - Premier Dessus*

6

12

18

23

28

34

40

45

50

55

60

64