

Musicalische Frühlings-Früchte

In drei- vier- und fünff-stimmiger
Instrumental-Harmonia
mit Basso Continuo

Hamburg 1668

Dietrich Becker
1623 – 1679

Published by Johan Tufvesson.

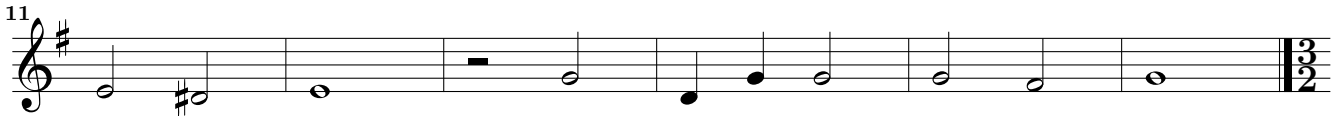
Non-commercial copying welcome

Revision : 1.4

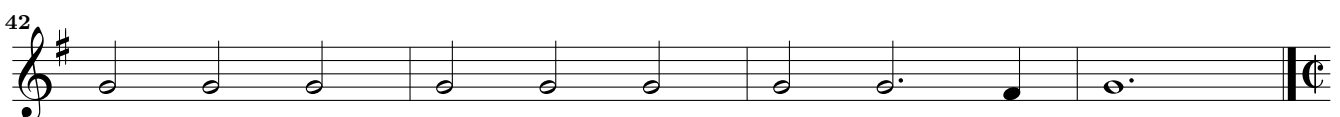
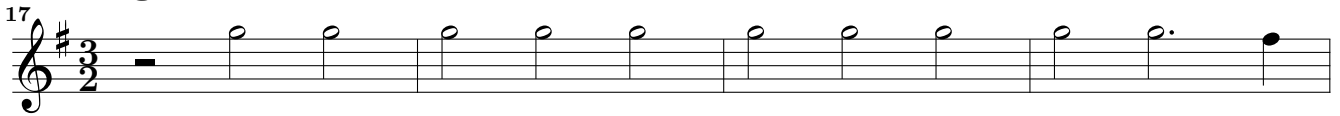
Sonata – Suite à 5

Dietrich Becker (1623?-1679)

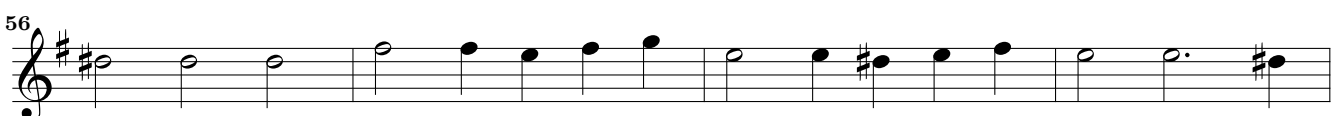
23. Sonata Adagio



Allegro



Adagio



64

68

72 *p*

76

81

86

90

93

95

98

101

104

107

110

113 orig.

The image shows a musical score for Violino II, measures 64 to 113. The score is written in treble clef with a key signature of one sharp (F#). The time signature is 6/4. The music consists of a single melodic line. Measure 64 starts with a half note G4. Measures 65-67 continue with quarter notes. Measure 68 has a half note G4. Measures 69-71 have quarter notes. Measure 72 has a half note G4, marked with a piano (*p*) dynamic. Measures 73-75 have quarter notes. Measure 76 has a half note G4. Measures 77-79 have quarter notes. Measure 80 has a half note G4. Measure 81 has a half note G4. Measures 82-84 have quarter notes. Measure 85 has a half note G4. Measure 86 has a half note G4. Measures 87-89 have quarter notes. Measure 90 has a half note G4. Measures 91-93 have quarter notes. Measure 94 has a half note G4. Measures 95-97 have quarter notes. Measure 98 has a half note G4. Measures 99-101 have quarter notes. Measure 102 has a half note G4. Measures 103-105 have quarter notes. Measure 106 has a half note G4. Measures 107-109 have quarter notes. Measure 110 has a half note G4. Measures 111-113 have quarter notes. The score ends with a double bar line and repeat sign.

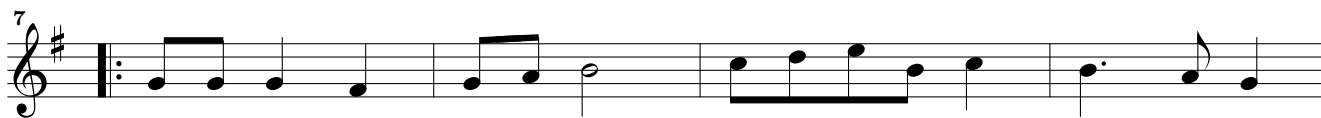
24. Allmand

Musical score for '24. Allmand' in G major, 2/4 time. The score consists of five staves of music. The first staff starts with a treble clef and a key signature of one sharp (F#). The melody begins with a quarter note G4, followed by a dotted quarter note A4, and continues with eighth and quarter notes. The second staff starts at measure 4. The third staff starts at measure 7 and includes a repeat sign at the beginning. The fourth staff starts at measure 11. The fifth staff starts at measure 14 and ends with a double bar line and repeat dots.

25. Courant

Musical score for '25. Courant' in G major, 3/4 time. The score consists of five staves of music. The first staff starts with a treble clef and a key signature of one sharp (F#). The time signature is 3/4. The melody begins with a quarter note G4, followed by a quarter note A4, and continues with quarter and eighth notes. The second staff starts at measure 4. The third staff starts at measure 9 and includes a repeat sign at the beginning. The fourth staff starts at measure 15. The fifth staff starts at measure 20 and ends with a double bar line and repeat dots.

26. Sarband



27. Gique

