

Geistlicher Harmonien

Erster Teil

20 Deutsche Concerten

2, 3, 4 und 5 Stimmen

Dresden 1665

Christoph Bernhard

1628 – 1692

Published by Johan Tufvesson.

Non-commercial copying welcome

Revision : 1.12

2 Bassus Continuus

Ach mein herzliebes Jesulein

Christoph Bernhard (1628-1692)

Adagio

6 # 6 5 7 6 5 # 6 6

5 # 6 # 6 4 # # # 6 # # 6

9 4 # 5 6 # 6 4 # # # 6 6

13 6 # 6 # 4 # # 6

17 5 6 # 6 4 # # 5 6 5 6 # # # 6

21 5 6 4 # # # # # 5 6 4 # #

25 5 6 6 # 7 # 6 5 6 6

29 7 # 6 # # 5 6 6 5 6 7 6

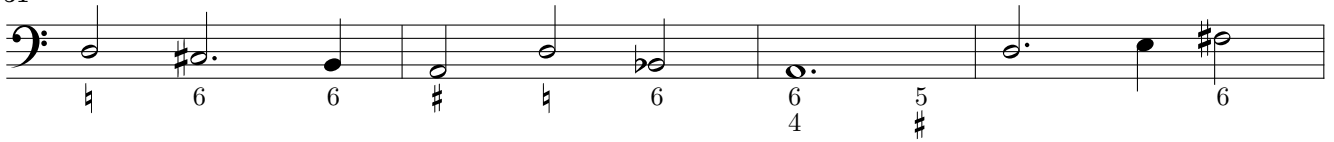
33

38 6 6 # # 6

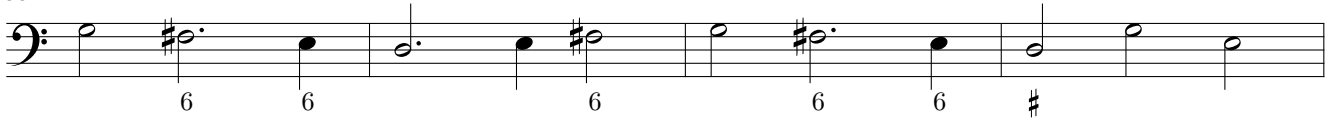
43 6 # 6 # 6 # 6 # 6 # 6 #

47 5 6 6 # 6 6 # 6

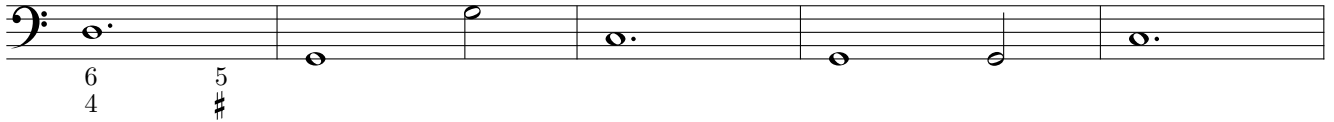
51



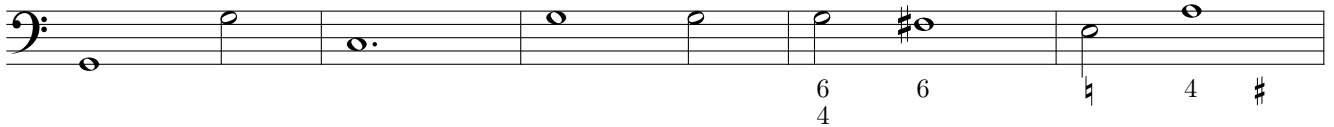
55



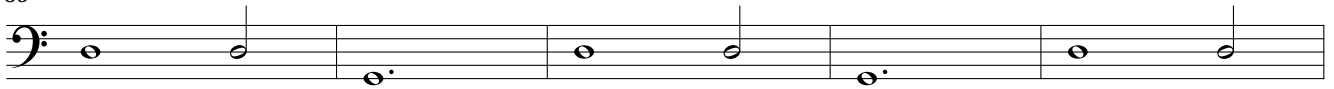
59



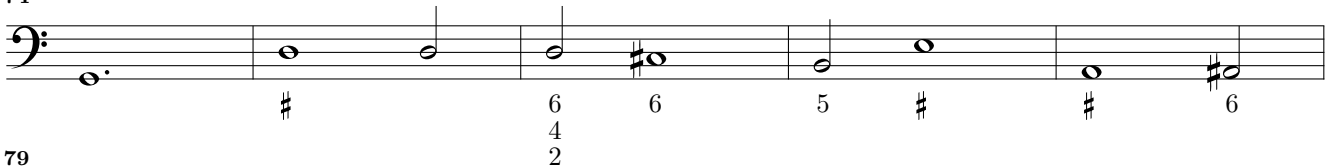
64



69



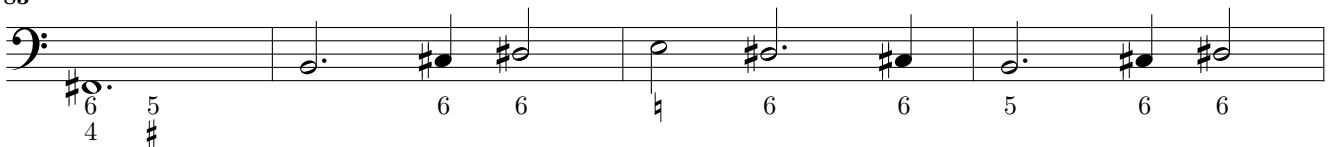
74



79



83



87



91



94



98

