

# Geistlicher Harmonien

Erster Teil

20 Deutsche Concerten

2, 3, 4 und 5 Stimmen

Dresden 1665

Christoph Bernhard

1628 – 1692

Published by Johan Tufvesson.

Non-commercial copying welcome

*Revision : 1.11*

2  
Bassus Continuus

# Aus der Tieffen

Christoph Bernhard (1628-1692)

Adagio

Musical score for Bassus Continuus, 'Aus der Tieffen' by Christoph Bernhard. The score is in bass clef with a common time signature. It consists of ten staves of music, each with a measure number (5, 8, 12, 15, 19, 23, 27, 30, 35, 39) and a key signature of one sharp (F#). The music features various ornaments and dynamics such as 'Solo.', 'Sinf.', and 'a 3'. The final measure is a double bar line with a 3/2 time signature.

43

*Sinf.* 6 7 6 4 # a 3 6

49

7 6 b3 6 7 6 #

55

5 6 7 6 6 5 5 6  
4 3 4 # 4 3

61

7 6 6 5 5 6 7 6  
4 #

66

# 6 4 # 6 7 6  
#

71

#5 #3 6 7 6 #  
#

76

5 6 7 6 6 5 5 6  
4 # 4 # 4 #

82

6 5 6 5 5 6 7 6 6  
4 #

87

7 #6 5 6 5 6 5  
4 3 4 3 4 3 4 #

93

93

7 7 6 6 4 3 6

97

97

7 6 7 6 4 3 6 7 6 4 3 6 7 6 4 3 6 7 4 3 6

101

101

7 6 7 6 7 6 7 6 7 6 7 6 4 3 6 7 6 4 3

105

105

*Solo.* 6 7 7 6 # 7 6 6 5 7 6 b 5 # 5

109

109

7 7 4 # # 6 7 6 7 4 # *Sinf.*

112

112

7 6 7 # 7 #5 7 #5 b3 7 6 # 7 4 #

116

116

*Sinf.* 3 7 6 6

120

120

7 6 4 3 # 6 7 5 # #

124

124

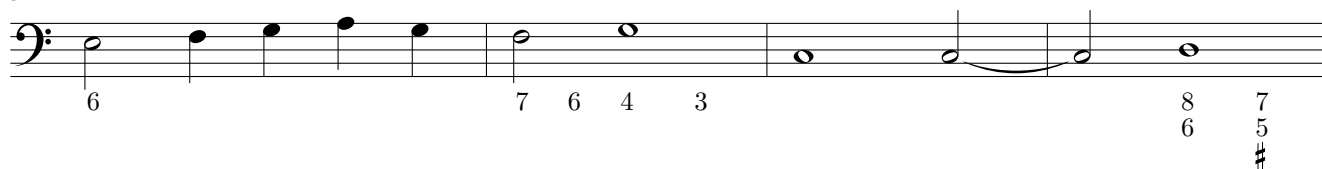
6 6 7 6 # 5 6

128

128

4 # *Solo.* 6 7 6

132



136



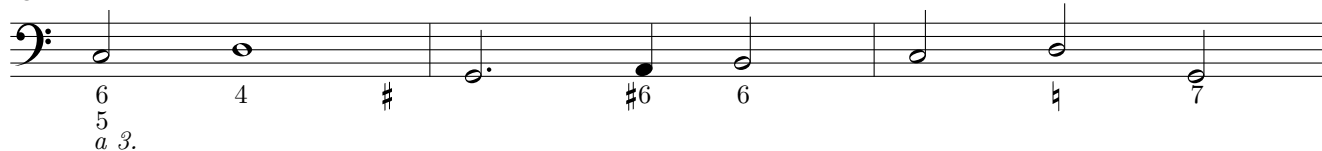
140



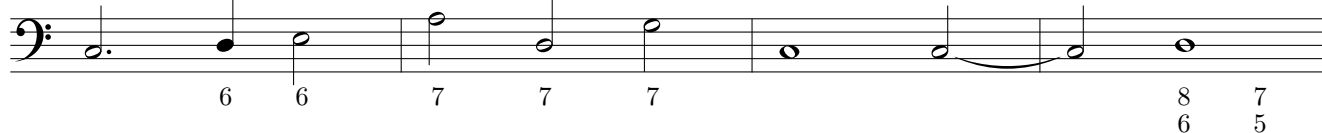
144



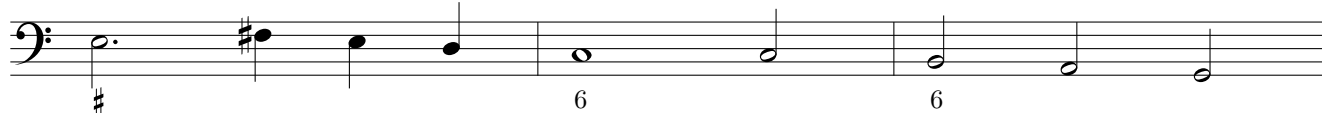
148



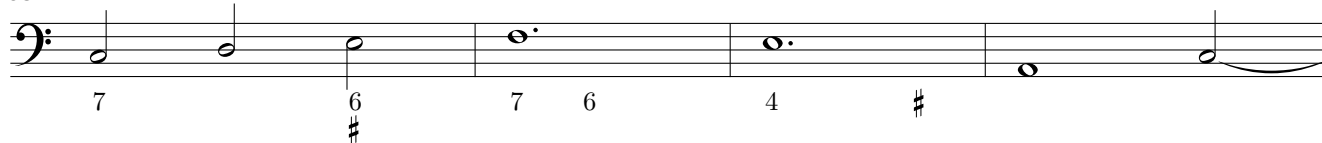
151



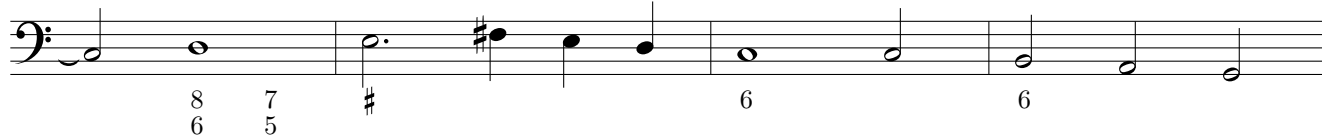
155



158



162



166

