

Zwey-stimmiger  
Sonaten und Suiten

Hamburg 1674

Dietrich Becker  
1623 – 1679

Published by Johan Tufvesson.

Non-commercial copying welcome

*Revision : 1.2*

# 1. Sonata

Dietrich Becker  
(1623-1679)

## 1. *Allegro*

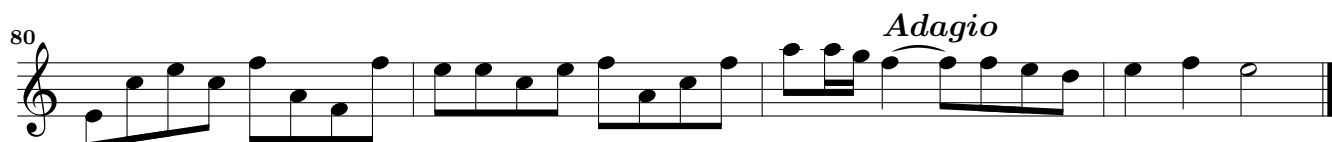
Musical score for the first movement, *Allegro*, measures 1-21. The score is written in treble clef with a common time signature (C). It consists of seven staves of music. The first staff begins with a treble clef and a common time signature. The music features a mix of eighth and sixteenth notes, with some rests and accidentals. The second staff starts at measure 5, the third at measure 8, the fourth at measure 11, the fifth at measure 15, and the sixth at measure 18. The piece concludes with a double bar line at the end of the seventh staff.

## *Adagio piano*

Musical score for the second movement, *Adagio piano*, measures 22-36. The score is written in treble clef. It consists of three staves of music. The first staff begins at measure 22 and ends at measure 25. The second staff begins at measure 26 and ends at measure 30. The third staff begins at measure 31 and ends at measure 36 with a double bar line and a repeat sign. The music is characterized by a slower tempo and a more melodic, flowing quality.

## *Allegro*

Musical score for the third movement, *Allegro*, measures 37-43. The score is written in treble clef with a 6/4 time signature. It consists of two staves of music. The first staff begins at measure 37 and ends at measure 40. The second staff begins at measure 41 and ends at measure 43. The music features a mix of eighth and sixteenth notes, with some rests and accidentals.

*Adagio**Allegro*

## Suite

2. *Allmandt*

3

5

8

11

15

1. 2.

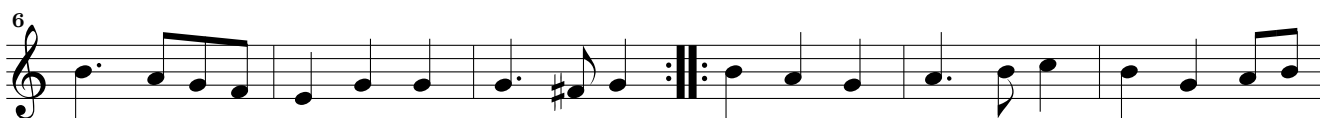
3. *Courant*

6

11



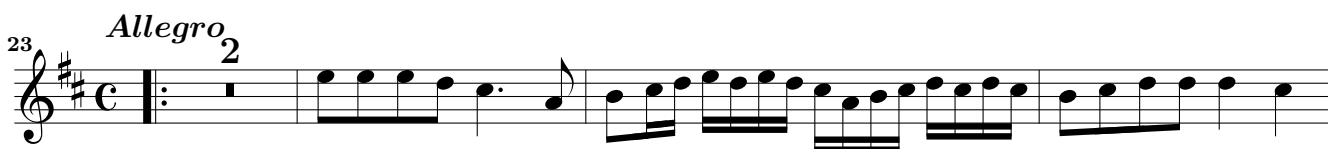
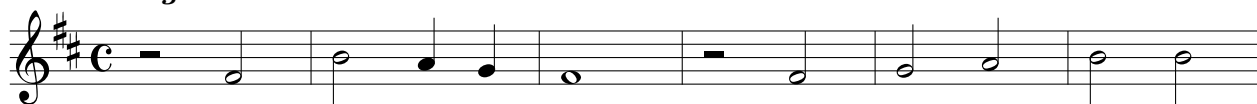
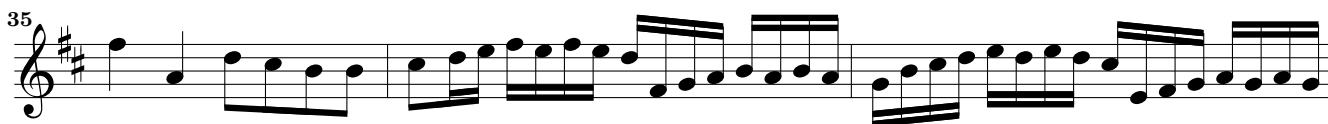
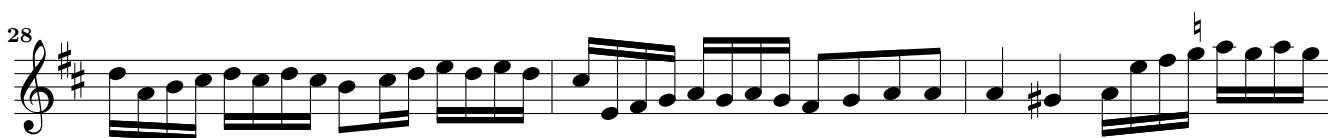
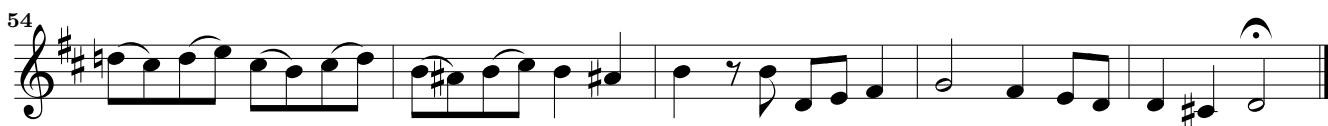
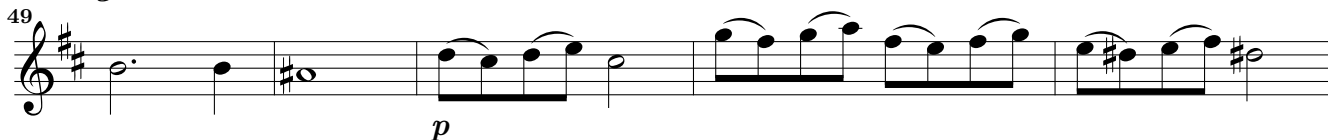
#### 4. Sarabanda

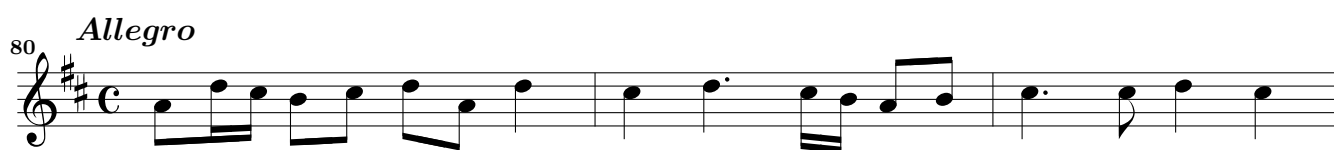
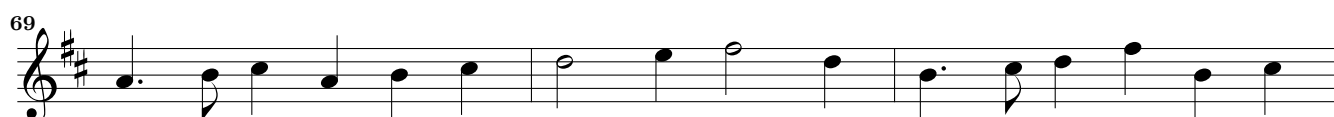


#### 5. Giguæ



## 6. Sonata

6. *Adagio**Allegro*  
2*Adagio*



## Suite

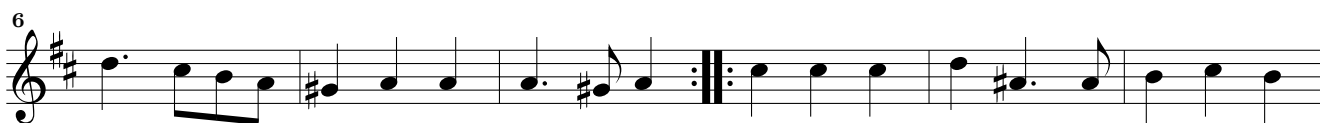
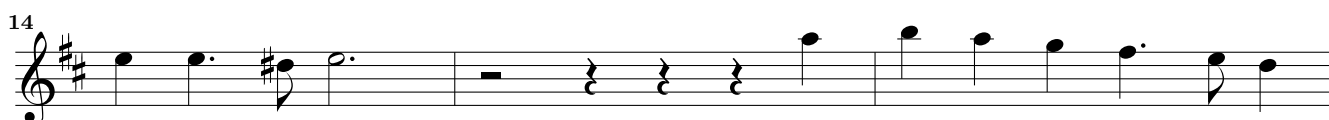
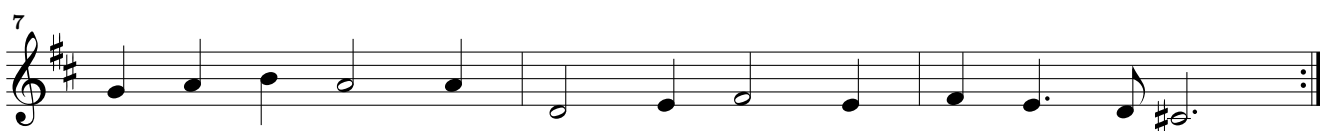
7. *Allmandt*

Musical score for '7. Allmandt' in G major, common time (C). The piece consists of 17 measures. The notation is on a single treble clef staff. Measure numbers 4, 8, 13, and 17 are indicated at the start of their respective lines. The score includes various rhythmic values such as eighth, sixteenth, and quarter notes, as well as rests and accidentals.

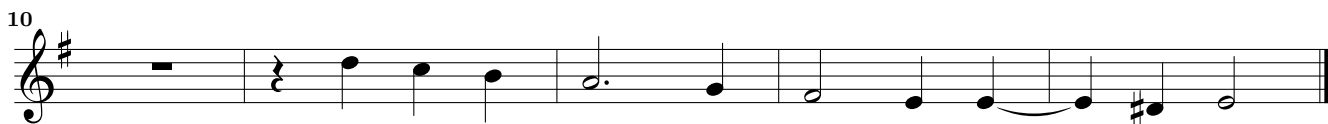
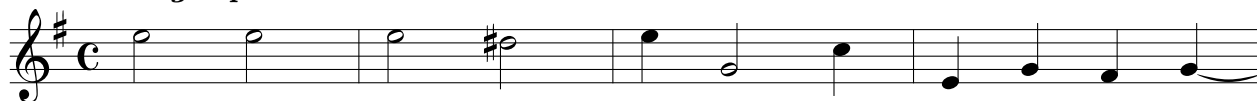
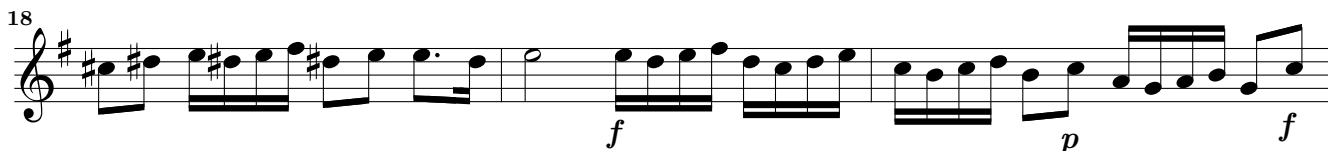
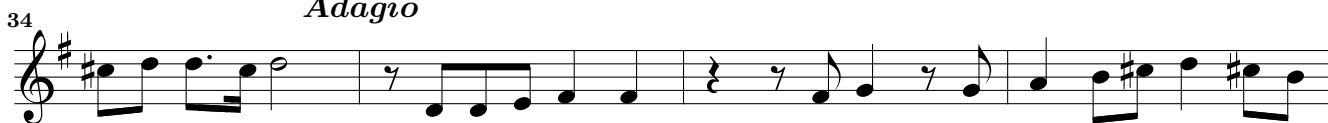
8. *Courant*

Musical score for '8. Courant' in G major, 3/4 time. The piece consists of 23 measures. The notation is on a single treble clef staff. Measure numbers 6, 12, 18, and 23 are indicated at the start of their respective lines. The score includes various rhythmic values such as eighth, sixteenth, and quarter notes, as well as rests and accidentals.



9. *Saraband*10. *Gigue*

## 11. Sonata

11. *Adagio piano**Allegro**Adagio**Allegro**Adagio*

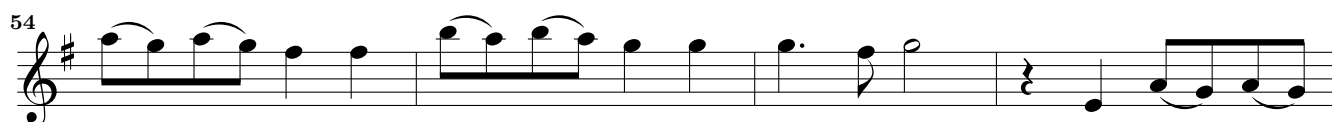
*Allegro*

42  *p*

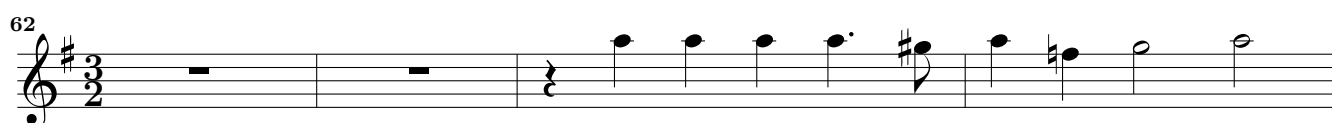
*Adagio piano*

45 

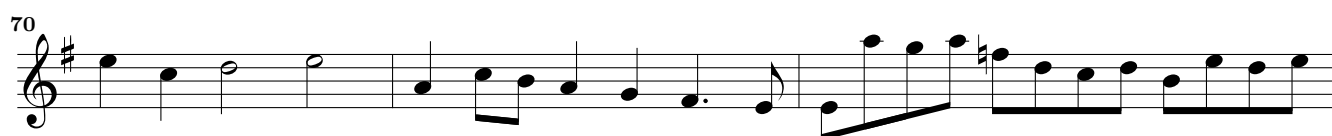
50 

54 

58 

62 

66 

70 

73 

76 

79  6

87

90

93

96

100

103

107

*p*

113

## Suite

### 12. Allmandt

4

7

11

13. *Courant*

Musical score for Courant, measures 1-25. The piece is in G major and 3/4 time. It consists of five staves of music. The first staff starts with a treble clef, a key signature of one sharp (F#), and a 3/4 time signature. The melody is written in a single voice. The second staff begins at measure 6. The third staff begins at measure 12 and contains a repeat sign followed by a 7-measure section. The fourth staff begins at measure 19. The fifth staff begins at measure 25 and ends with a double bar line and repeat dots.

14. *Sarabanda*

Musical score for Sarabanda, measures 1-12. The piece is in G major and 3/4 time. It consists of three staves of music. The first staff starts with a treble clef, a key signature of one sharp (F#), and a 3/4 time signature. The melody is written in a single voice. The second staff begins at measure 6 and contains a repeat sign. The third staff begins at measure 12 and ends with a double bar line and repeat dots.

15. *Gigue*

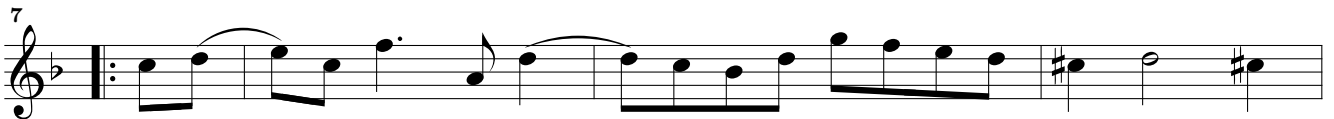
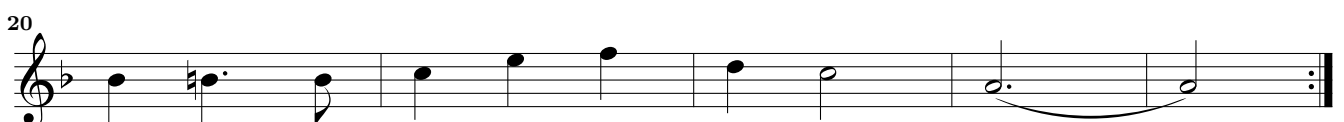
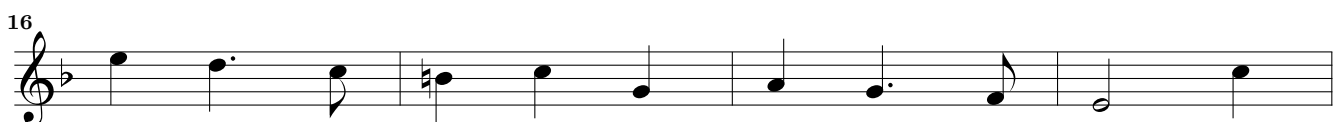
Musical score for Gigue, measures 1-19. The piece is in G major and 6/4 time. It consists of six staves of music. The first staff starts with a treble clef, a key signature of one sharp (F#), and a 6/4 time signature. The melody is written in a single voice. The second staff begins at measure 4. The third staff begins at measure 7 and ends with a double bar line and repeat dots. The fourth staff begins at measure 11 and starts with a repeat sign. The fifth staff begins at measure 15. The sixth staff begins at measure 19 and ends with a double bar line and repeat dots.

## 16. Sonata

The image displays a musical score for a sonata, consisting of two movements. The first movement, *Allegro*, begins at measure 17 and ends at measure 44. It is written in a single system with a treble clef, a key signature of one flat (B-flat), and a common time signature (C). The tempo is marked *Allegro*. The second movement, *Adagio*, begins at measure 45 and ends at measure 53. It is also written in a single system with a treble clef, a key signature of one flat, and a common time signature. The tempo is marked *Adagio*. The score includes various musical notations such as notes, rests, accidentals, and dynamic markings.

Musical score for Violino Secundo, measures 57-99. The score is written in treble clef with a key signature of one flat (B-flat) and a time signature of 3/2. The music consists of a single melodic line. Measures 57-62 are in 3/2 time. At measure 63, the time signature changes to common time (C). The piece concludes with a double bar line at measure 99.

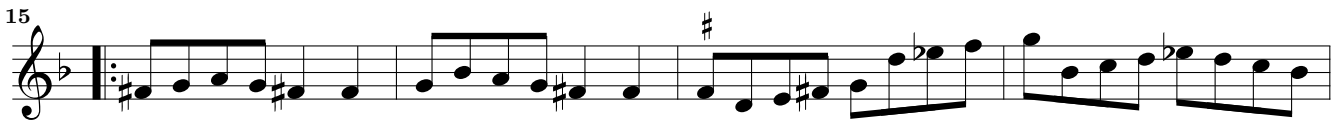
## Suite

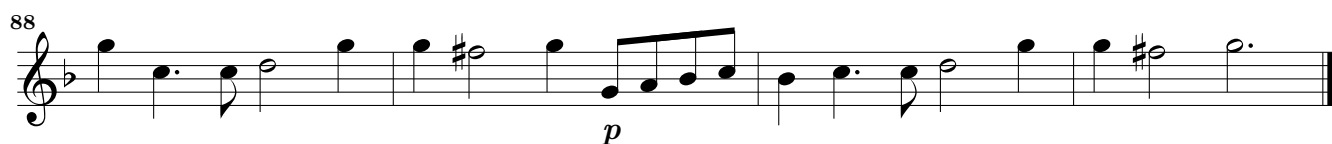
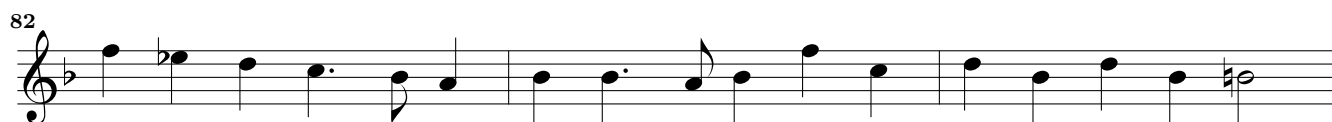
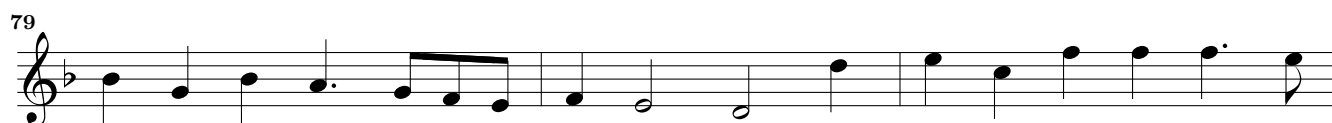
17. *Allmandt*18. *Courant*



19. *Saraband*20. *Giguæ*

## 21. Sonata



*Adagio*

## Suite

22. *Bandle Simple*

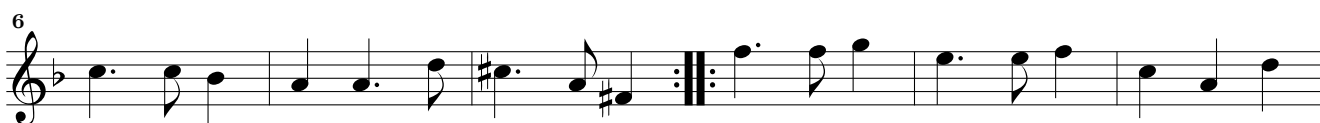
Musical score for "Bandle Simple" in 7/8 time, key of B-flat major. The score consists of five staves of music. The first staff starts with a treble clef, a key signature of one flat, and a 7/8 time signature. The melody begins with a quarter note G4, followed by a dotted quarter note A4, and an eighth note B4. The piece concludes with a double bar line and repeat dots.

*Gay*

Musical score for "Gay" in 3/8 time, key of B-flat major. The score consists of three staves of music. The first staff starts with a treble clef, a key signature of one flat, and a 3/8 time signature. The melody begins with a quarter note G4, followed by a quarter note A4, and a quarter note B4. The piece concludes with a double bar line and repeat dots.

*Amener*

Musical score for "Amener" in 3/8 time, key of B-flat major. The score consists of five staves of music. The first staff starts with a treble clef, a key signature of one flat, and a 3/8 time signature. The melody begins with a quarter note G4, followed by a quarter note A4, and a quarter note B4. The piece concludes with a double bar line and repeat dots.

*Gavott**23. Courant Simple**24. Courant Simple**25. Sarabanda*

## 26. Sonata

## 26. Adagio

5

9 12

*Solo*

24

27

29

31

34

37

40 *Adagio piano*

44

48

53

57

Musical score for Violino Secundo, measures 60-90. The score is written in treble clef with a key signature of three sharps (F#, C#, G#). The music features a variety of rhythmic patterns, including eighth and sixteenth notes, and rests. Trills are indicated by a '7' above the notes in measures 71 and 74. Triplet markings (the number '3') are present in measures 78, 80, 83, 85, 87, and 89. The piece concludes with a *p* (piano) dynamic marking in measure 90.

## Suite

27. *Allmandt*

Musical score for '27. Allmandt' in G major (one sharp) and common time (C). The piece consists of 21 measures. The notation is on a single treble clef staff. Measure numbers 5, 9, 13, 17, and 21 are indicated at the start of their respective lines. The score includes various rhythmic values such as eighth and sixteenth notes, and rests. The piece concludes with a double bar line and repeat dots.

28. *Courant*

Musical score for '28. Courant' in G major (one sharp) and 3/4 time. The piece consists of 26 measures. The notation is on a single treble clef staff. Measure numbers 5, 10, 15, 20, and 26 are indicated at the start of their respective lines. The score includes various rhythmic values such as eighth and sixteenth notes, and rests. The piece concludes with a double bar line and repeat dots.



29. *Saraband*30. *Giguæ*

## 31. Sonata

31. *Adagio piano*

5 *Allegro*

10

14

17

21

25

28

32

35

40 *Adagio*

45

52

56

60

65

70

74

80

84

87

90

93

96

99

102

105

108

111 *Adagio piano*

115

## Suite

32. *Ariae*

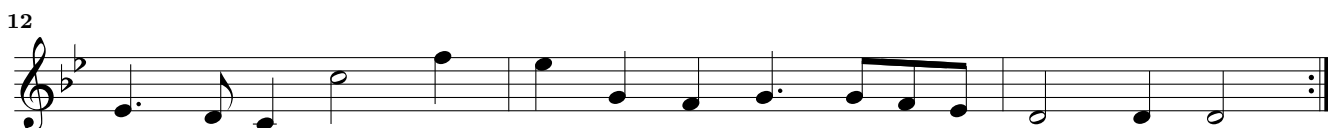
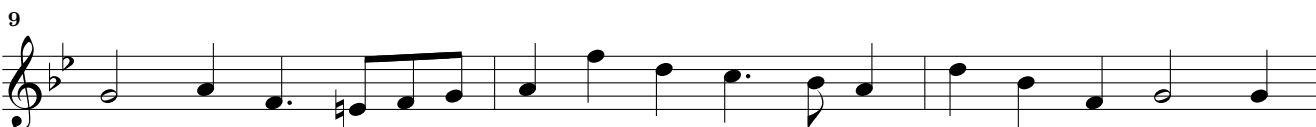
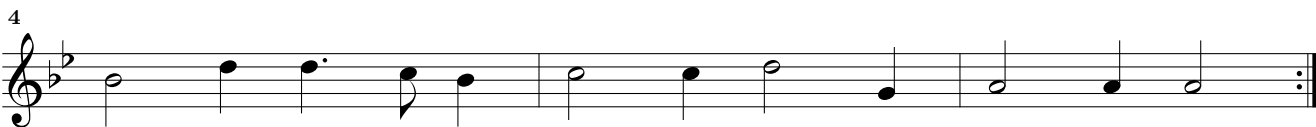
Musical score for 32. *Ariae*. The piece is in G minor (one flat) and common time (C). It consists of three staves of music. The first staff begins with a treble clef and a common time signature. The second staff starts with a measure rest of 4 measures. The third staff starts with a measure rest of 7 measures. The piece concludes with a double bar line and repeat dots.

33. *Courant*

Musical score for 33. *Courant*. The piece is in G minor (one flat) and 3/4 time. It consists of three staves of music. The first staff begins with a treble clef and a 3/4 time signature. The second staff starts with a measure rest of 6 measures. The third staff starts with a measure rest of 12 measures. The piece concludes with a double bar line and repeat dots.

34. *Saraband*

Musical score for 34. *Saraband*. The piece is in G minor (one flat) and 3/8 time. It consists of three staves of music. The first staff begins with a treble clef and a 3/8 time signature. The second staff starts with a measure rest of 6 measures. The third staff starts with a measure rest of 11 measures. The piece concludes with a double bar line and repeat dots.



## 36. Sonata

36. *Adagio piano*

Musical score for the first section, marked *Adagio piano*. It consists of five staves of music in a single system. The key signature has two flats (B-flat and E-flat), and the time signature is common time (C). The music features a slow, melodic line with some chromaticism and rests.

20 *Allegro*

Musical score for the second section, marked *Allegro*. It consists of ten staves of music in a single system. The key signature remains two flats, and the time signature is common time. The music is more rhythmic and features many sixteenth and thirty-second notes. A first ending bracket labeled '12' spans the final two staves of this section. The section concludes with the word *Solo* written below the final staff.

64

68

72

76 *Adagio piano piano*

82

89

93

96

100

104

107

111

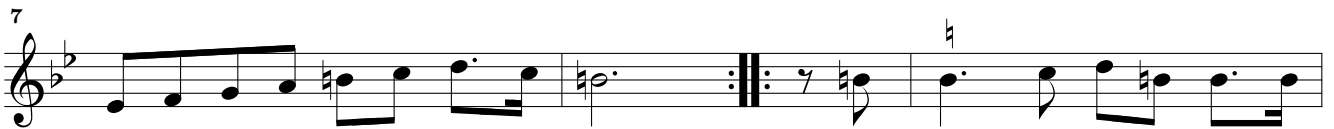
115

119

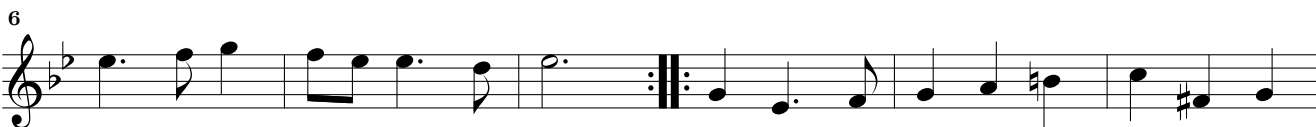
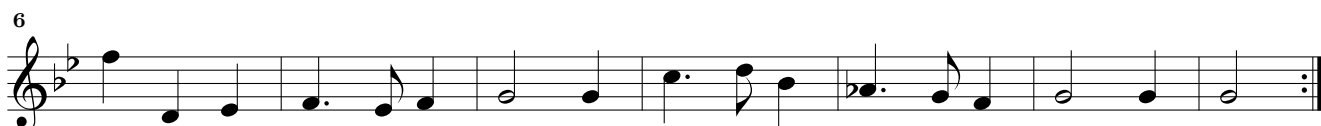
122

Detailed description: This page contains a musical score for the second violin part of a sonata. It consists of 12 staves of music, numbered 64 to 122. The key signature is B-flat major (two flats). The tempo and dynamics are marked 'Adagio piano piano' starting at measure 76. The notation includes various rhythmic values such as eighth, sixteenth, and thirty-second notes, as well as rests and accidentals. A time signature change to 6/4 is indicated at measure 82. The score concludes with a double bar line at measure 122.

## Suite

37. *Allmandt*38. *Courant*



39. *Saraband*40. *Gigue*Sonata, Suite 41-47  
Tacet