

Suites

Anonymous

ca 1680–1699

Düben collection IMHS 64:13

Published by Johan Tufvesson.

Non-commercial copying welcome

Revision : 1.1

Bass

Suite 1

Ouverture

Anonymous (ca. 1680-1699)

5

9

13

17

26

34

37

44

47

50

55

Allemande

2

6

9

13

19

24

28

1.

2.

3

Menuet

6

fin

11

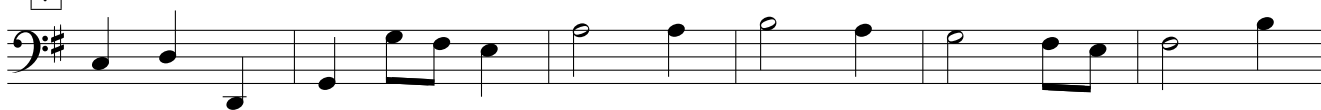
(D.C.)

Air

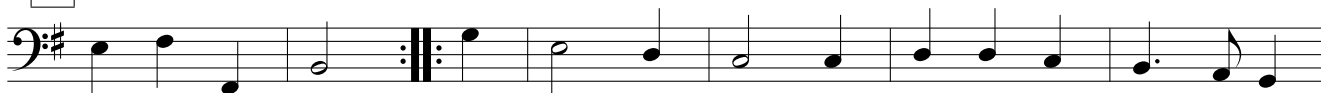
Suite 1 – Bass



7



13



19



25



Chaconne



6



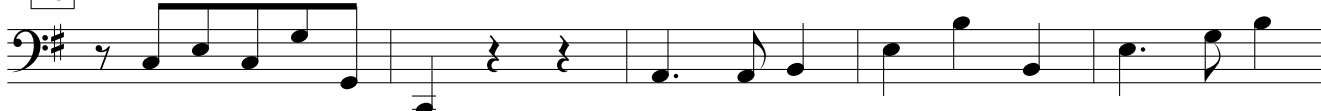
11



16



20



25



31



Musical score for Suite 1 – Bass, measures 37 to 94. The score is written in bass clef with a key signature of one sharp (F#). The music consists of several lines of notation, including rests, eighth notes, quarter notes, and half notes. Measures 60-71 and 72-76 feature slurs over eighth-note patterns. Measure 94 includes first and second endings.

37

43

49

55

60

64

68

72

77

82

88

94

1. | 2.

Entrée

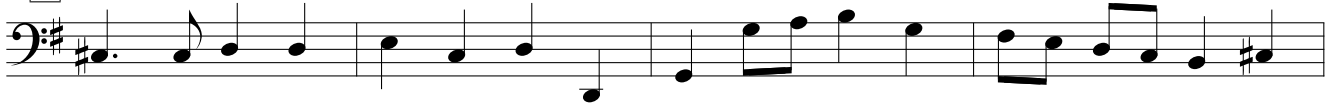
Suite II



4



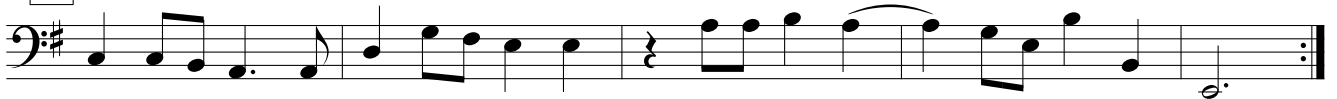
9



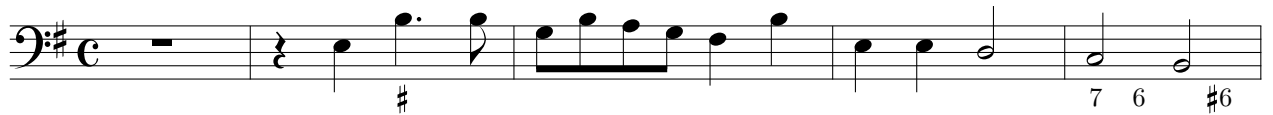
13



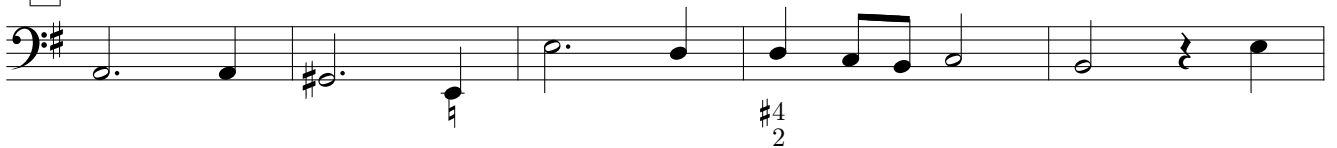
17



Tombeau



5



10



15



21



Suite II – Bass

7

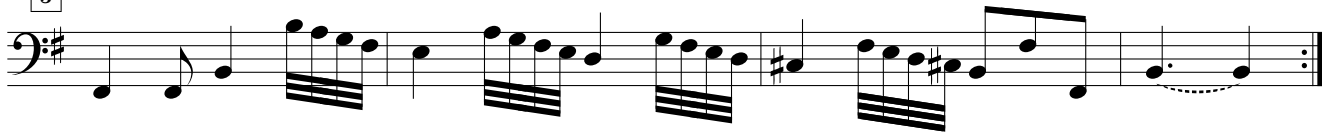
Musical score for Suite II – Bass, measures 24 to 69. The score is written in bass clef with a key signature of one sharp (F#). The music consists of ten staves of notation. Measures 24-36 are in 4/4 time, while measures 40-69 are in 3/4 time. The notation includes various rhythmic values (quarter, eighth, and sixteenth notes), rests, and phrasing slurs. Measure 36 ends with a repeat sign and a '3' indicating a triplet. Measure 40 begins with a '3' indicating the start of the 3/4 time signature. Measure 52 contains two measures of whole rests. The score concludes with a double bar line at the end of measure 69.

Gigue

Suite II – Bass



5



8



12



16



Anglois



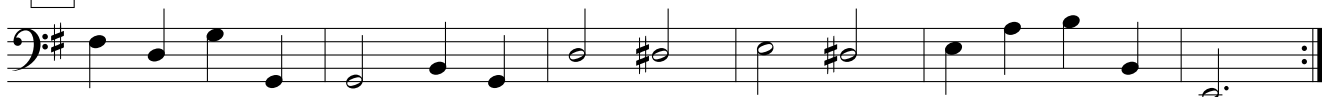
5



10



15



Menuet



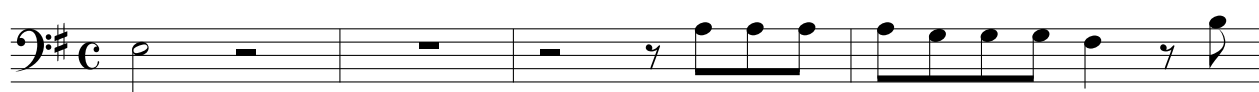
9



15



Final



5

