

SONATE DA CHIESA

a Violino Solo e Violoncello o Basso Continuo

AMSTERDAM 1708

TOMASO ALBINONI

1671 – 1750

Published by Johan Tufvesson.

Non-commercial copying welcome

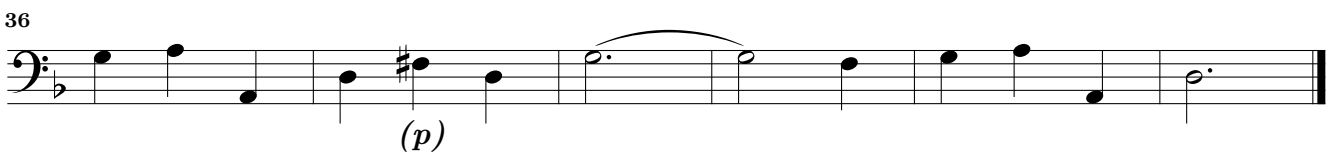
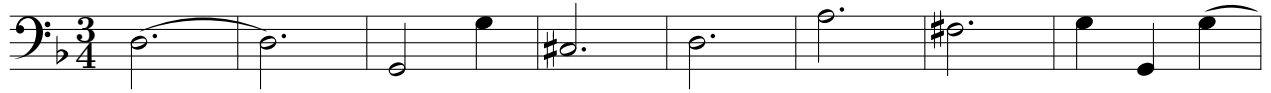
Revision : 1.1

Basso

Sonata I

Tomaso Albinoni (1671–1750)

Adagio



Allegro



13

16

(p)

19

23

26

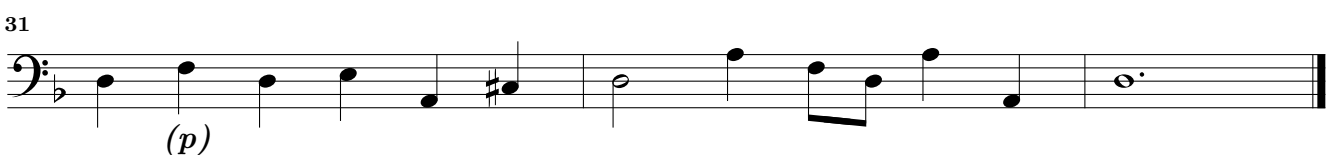
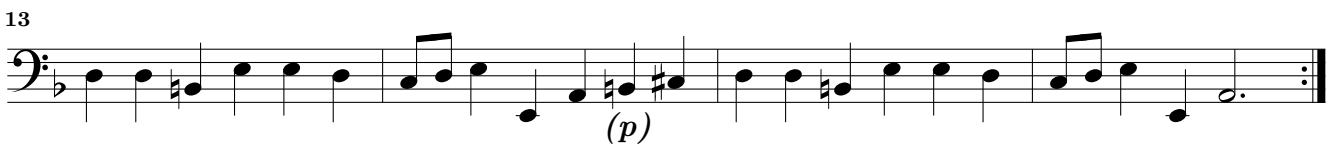
29

(p)

Largo

6

11



This page intentionally left blank.

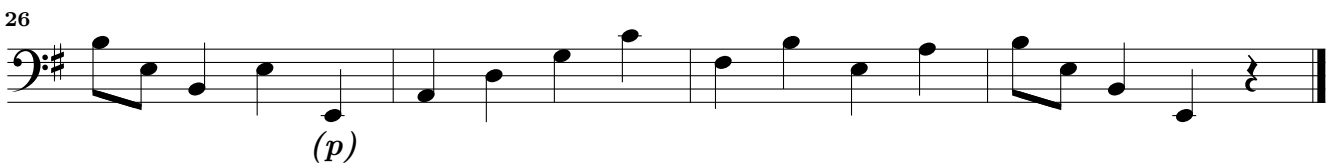
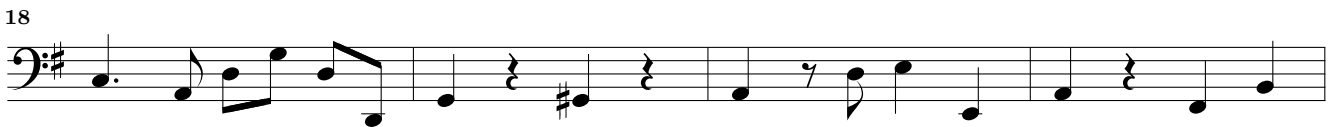
Basso

Sonata II

Tomaso Albinoni (1671-1750)

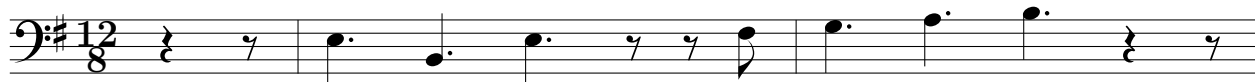
Adagio





Largo





3



6



9



12



15



17



21



25



29



32



36



This page intentionally left blank.

Basso

Sonata III

Tomaso Albinoni (1671-1750)

Largo

4

7

10

(p)

Allegro

5

9

13

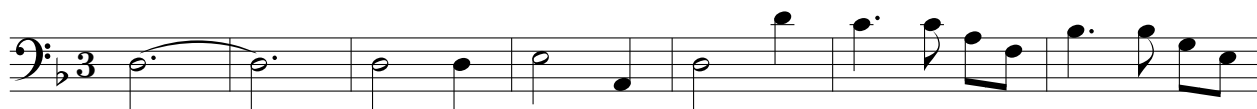
16

19

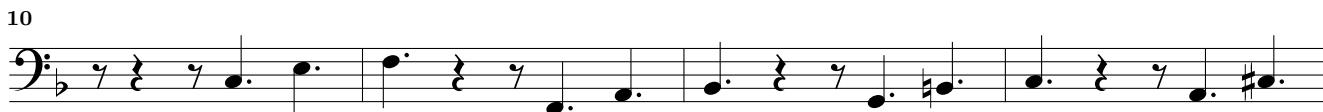
(p)

Adagio

Sonata III Basso



Giga



Basso

Sonata IV

Tomaso Albinoni (1671-1750)

Adagio

4

7

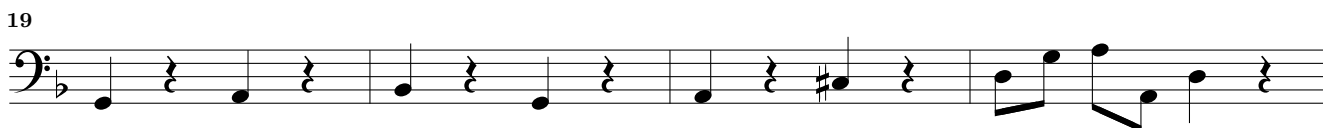
10

13

15

Allegro

Sonata IV Basso



Adagio



6



11



15



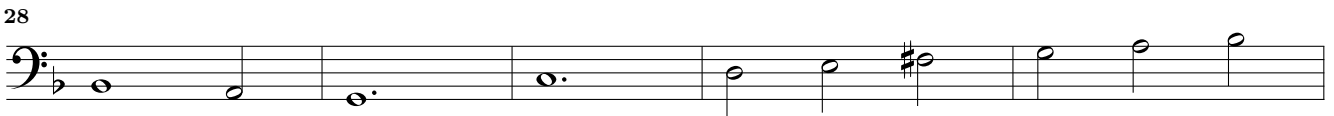
19



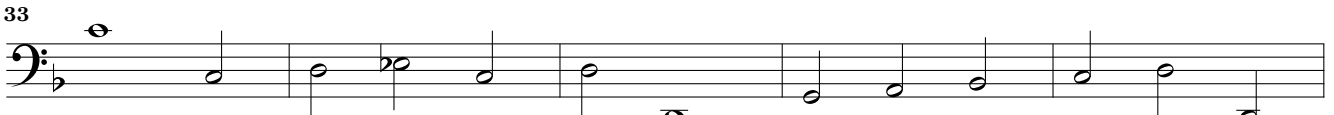
24



28



33

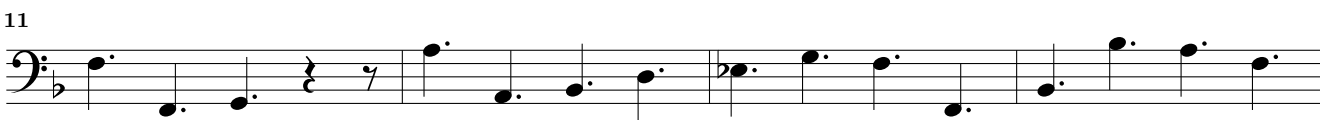


38



42





Basso

Sonata V

Tomaso Albinoni (1671-1750)

Adagio



6



11



15



20



25



29



33



37



42



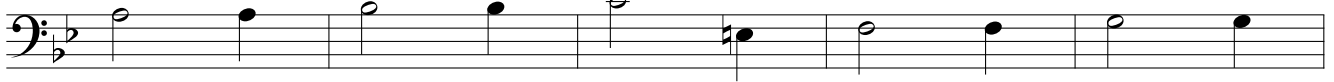
17



21



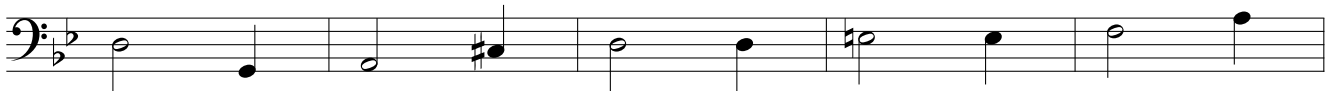
26



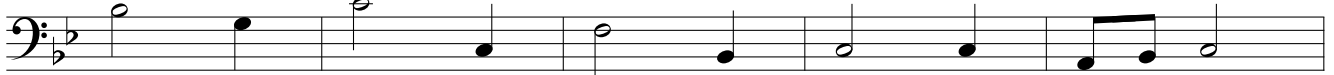
31



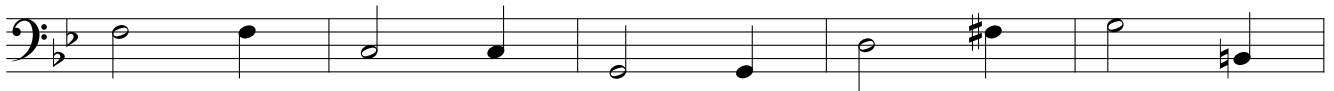
36



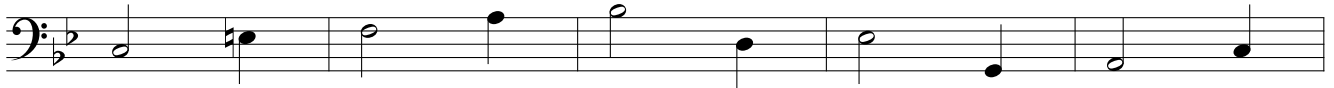
41



46



51



56



62



Basso

Sonata VI

Tomaso Albinoni (1671-1750)

Largo

Musical score for the Largo section of Sonata VI in G major by Tomaso Albinoni, Bassoon part. The score is written in bass clef with a key signature of one sharp (F#) and a common time signature (C). It consists of six staves of music, with measure numbers 4, 7, 10, 12, and 15 indicated at the beginning of their respective staves. The music features a slow, melodic line with various rhythmic values including quarter, eighth, and sixteenth notes, as well as rests and accidentals.

Allegro

Musical score for the Allegro section of Sonata VI in G major by Tomaso Albinoni, Bassoon part. The score is written in bass clef with a key signature of one sharp (F#) and a common time signature (C). It consists of five staves of music, with measure numbers 2, 5, 7, 9, and 12 indicated at the beginning of their respective staves. The music is characterized by a faster tempo and includes a variety of rhythmic patterns such as eighth and sixteenth notes, often beamed together, and rests.

15



17



19



21



24



26



28



31



34



37



39



Adagio

Sonata VI Basso



Allegro

