

SONATE DA CHIESA

a Violino Solo e Violoncello o Basso Continuo

AMSTERDAM 1708

TOMASO ALBINONI

1671 – 1750

Published by Johan Tufvesson.

Non-commercial copying welcome

Revision : 1.12

Violino

Sonata IV

Tomaso Albinoni (1671-1750)

Adagio

Musical score for the Adagio section of Sonata IV by Tomaso Albinoni. The score is written for Violino in G minor, common time (C). It consists of six staves of music. The first staff begins with a treble clef, a key signature of one flat (B-flat), and a common time signature. The tempo is marked 'Adagio'. The music features a series of eighth and sixteenth notes, with some rests and accidentals. The second staff starts at measure 4, the third at measure 7, the fourth at measure 10, the fifth at measure 13, and the sixth at measure 15. The piece concludes with a double bar line at the end of the sixth staff.

Allegro

Musical score for the Allegro section of Sonata IV by Tomaso Albinoni. The score is written for Violino in G minor, common time (C). It consists of four staves of music. The first staff begins with a treble clef, a key signature of one flat (B-flat), and a common time signature. The tempo is marked 'Allegro'. The music features a series of eighth and sixteenth notes, with some rests and accidentals. The second staff starts at measure 4, the third at measure 6, and the fourth at measure 8. The piece concludes with a double bar line at the end of the fourth staff.

10

12

15

17

19

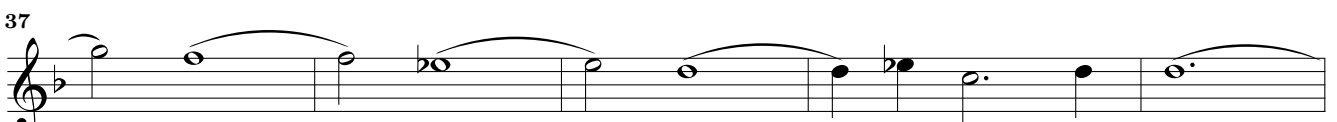
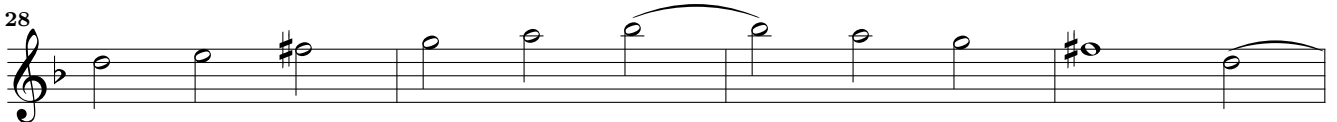
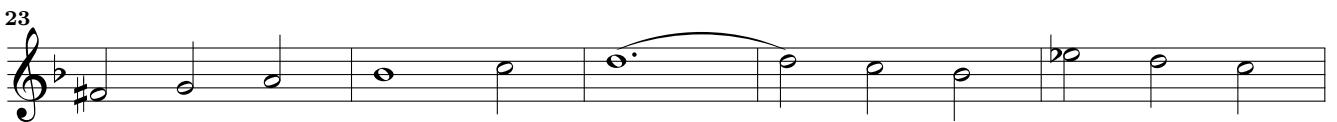
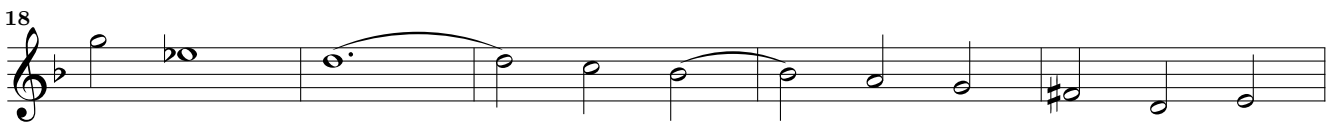
21

23

25

27

29



Allegro

Sonata IV Violino

3

5

7

10

12

14

17

19