

SONATÆ
UNARUM FIDIUM
Violino Solo

Norimbergæ 1664

Johann Heinrich Schmelzer
c. 1620 – 1680

Published by Johan Tufvesson.

Non-commercial copying welcome

Revision : 1.17

Violino

Sonata Sexta

J. H. Schmelzer (c. 1620–1680)

6

10

14

19

23

26

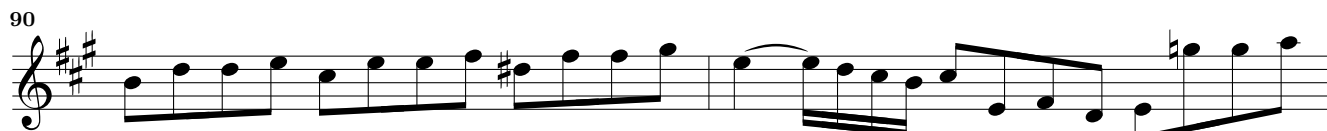
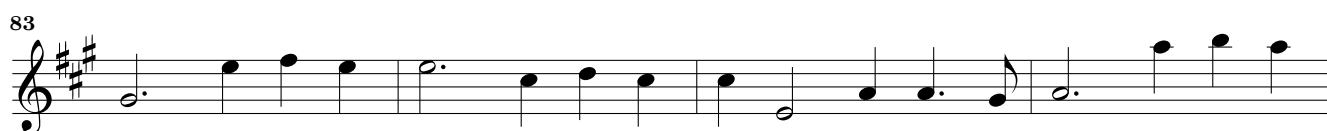
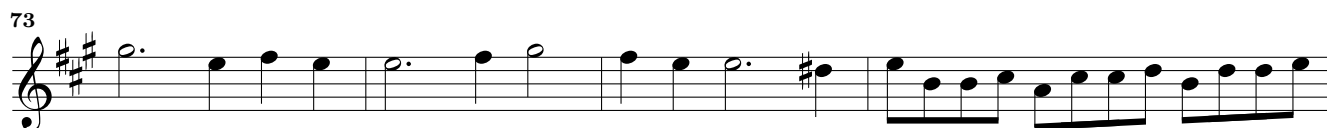
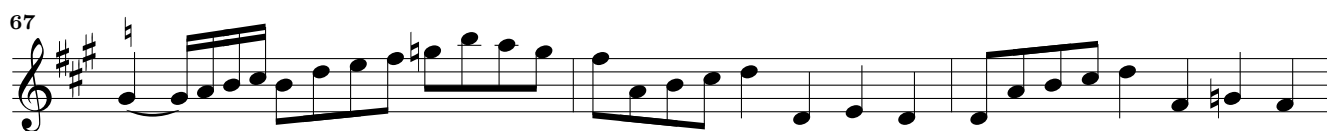
29

32

34

12
8

Musical score for Violino, Sonata Sexta, measures 38-65. The score is written in treble clef with a key signature of three sharps (F#, C#, G#). The time signature is 12/8. The score consists of ten staves of music. Measure 38 starts with a treble clef, a key signature of three sharps, and a 12/8 time signature. The music features a series of eighth and sixteenth notes. Measure 40 shows a change in the time signature to 12/8. Measure 42 continues with the 12/8 time signature. Measure 44 features a series of eighth notes. Measure 46 shows a change in the time signature to 3/2. Measure 49 features a series of quarter notes. Measure 53 shows a triplet of eighth notes. Measure 59 features a series of quarter notes. Measure 63 features a series of eighth notes. Measure 65 features a series of quarter notes.



26
Adagio

Sonatæ Unarum Fidium – Sonata Sexta – Violino

96

99

103

105

108

111

113

115 Adagio

118 *tr.*

121

125

Musical score for Violino, Sonata Sexta, measures 128-154. The score is written in treble clef with a key signature of three sharps (F#, C#, G#). The music consists of ten staves of notation. Measure 128 starts with a quarter note G4. Measure 131 features a half note G4. Measure 134 begins with a quarter note G4. Measure 136 starts with a quarter note G4. Measure 138 begins with a quarter note G4. Measure 141 starts with a quarter note G4. Measure 144 begins with a quarter note G4. Measure 146 starts with a quarter note G4. Measure 149 begins with a quarter note G4. Measure 152 starts with a quarter note G4. Measure 154 begins with a quarter note G4, followed by a measure with a whole note G4 and a fermata, and a final measure with a quarter note G4 and a fermata. The score includes various musical notations such as slurs, ties, and triplets.