

Recueil de pièces
pour la Viola d'Amour

London 1718?

Attilio Ariosti
1666 – 1729?

Published by Johan Tufvesson.

Non-commercial copying welcome

Revision : 1.1

Sonata 1

Attilio Ariosti (1666–1729?)

1. Largo

4

7

11

15

19

22

2. Adagio

5

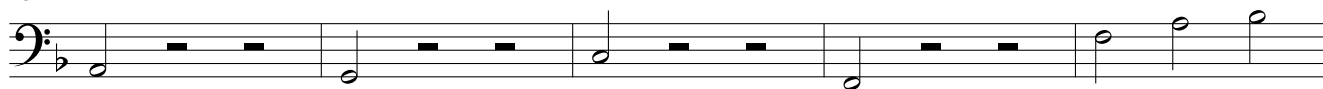
9

14

18

22

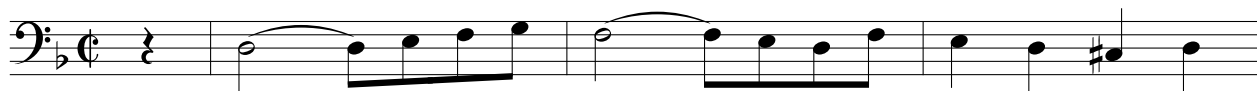
26



31



3. Tempo di Gavotta



4



8



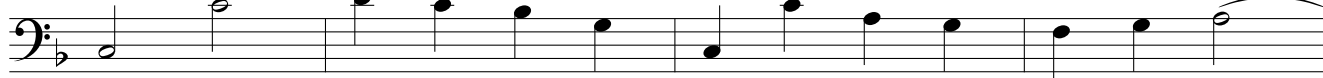
12



16



22



26



30



36



41



46



50

*Fine*

Sonata 2

4. Andante

4

7

10

13

17

20

23

27

30

33

36

5. Adagio

6

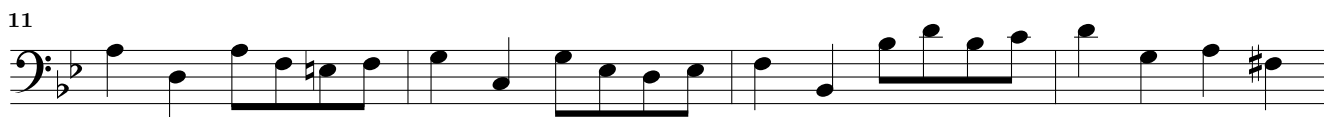
12



19

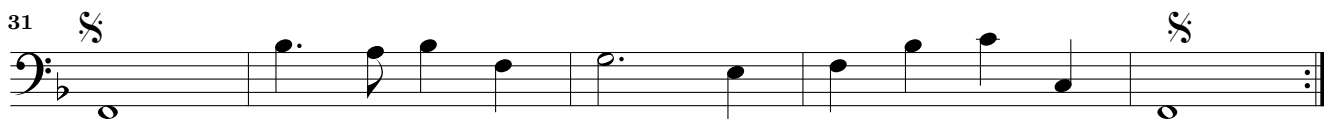
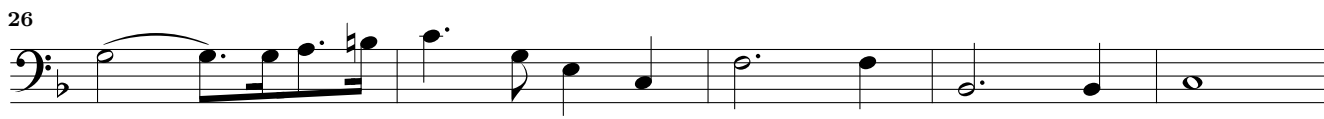
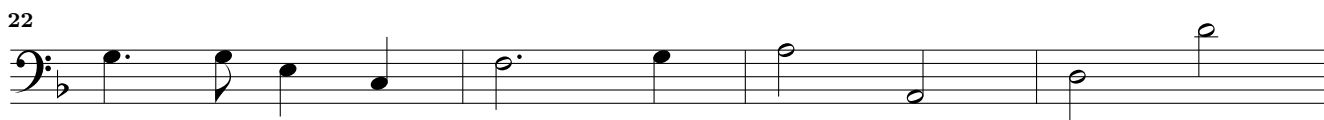
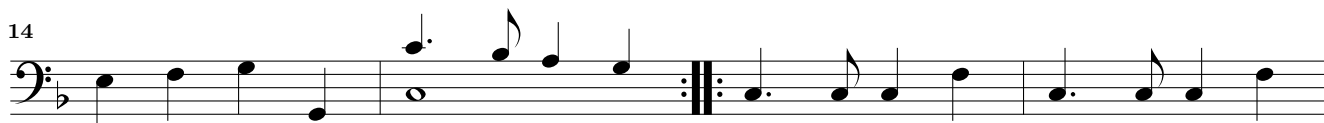
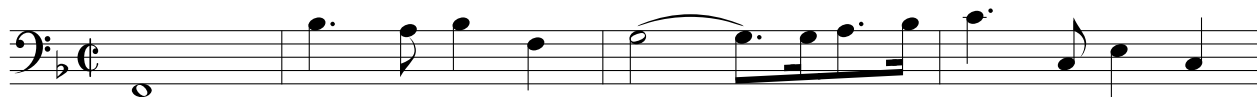


6. Tempo di Gavotta

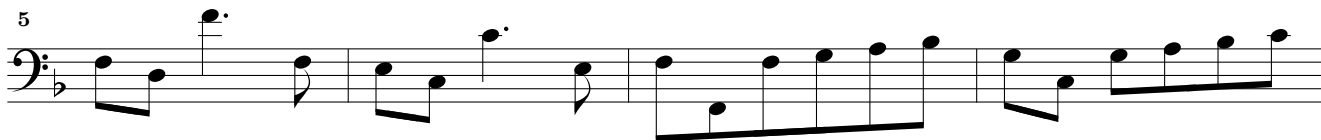


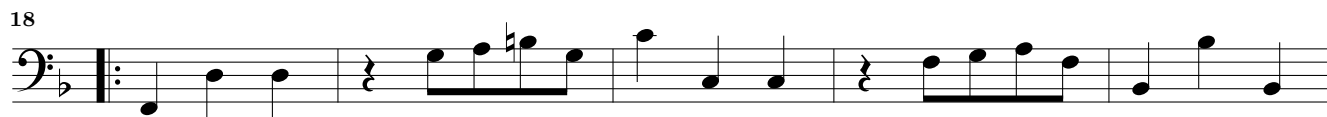
Sonata 3

7. —

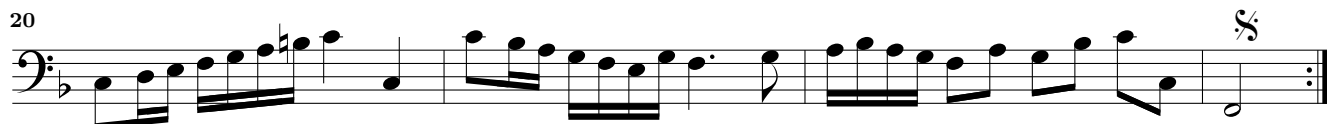
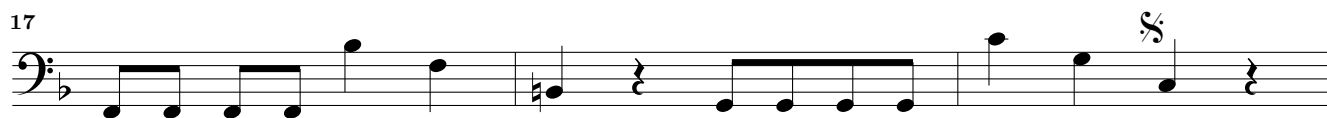
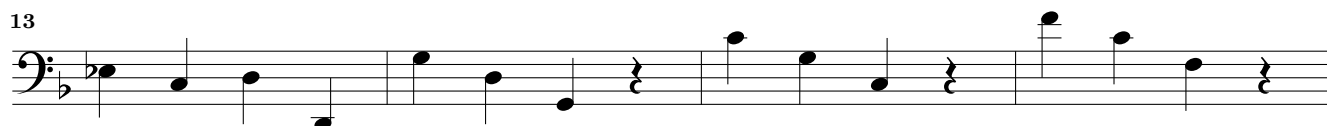


8. Largo





9. Allegro



Sonata 4

10. Pozato

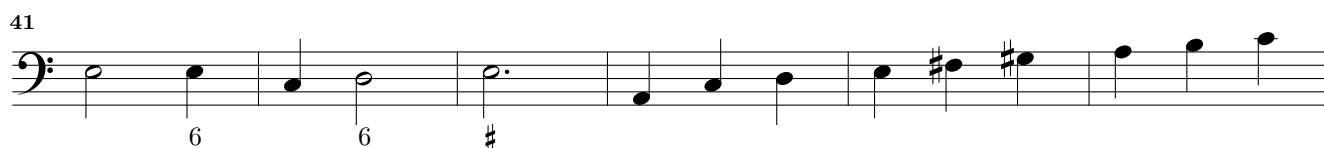
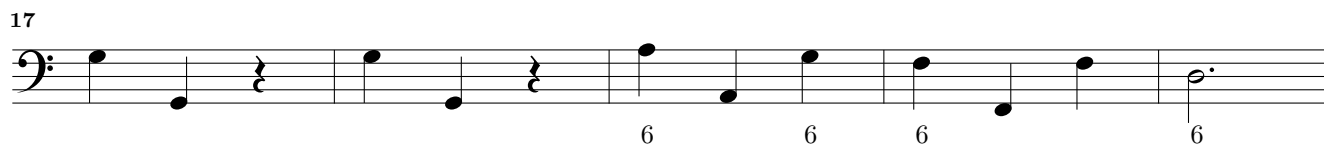
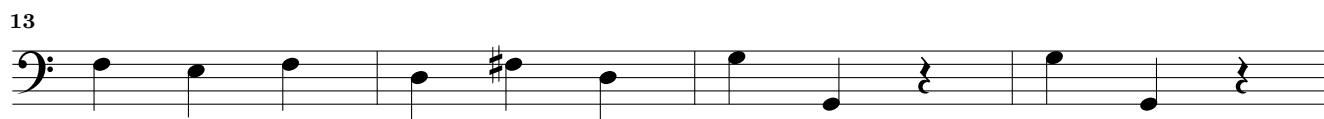
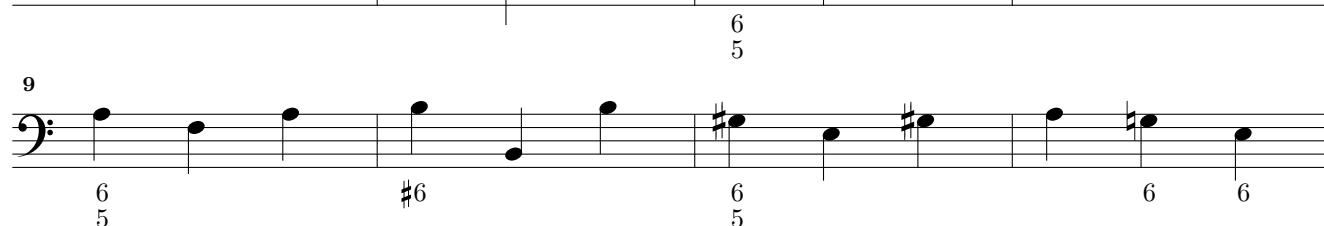
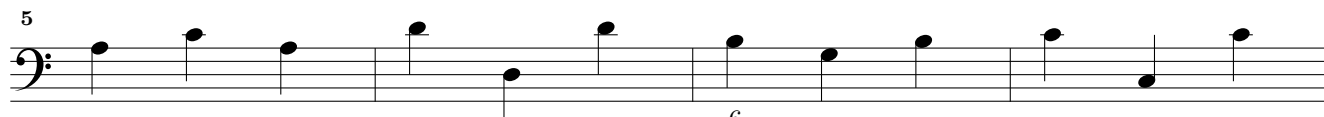
Musical score for '10. Pozato' in bass clef, common time (C). The piece consists of six staves of music. The first staff begins with a treble clef and a common time signature. The music features a series of eighth and sixteenth notes, with some accidentals (sharps and naturals). The piece concludes with a double bar line.

11. Andante

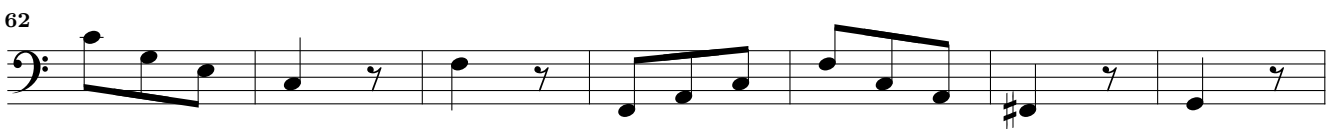
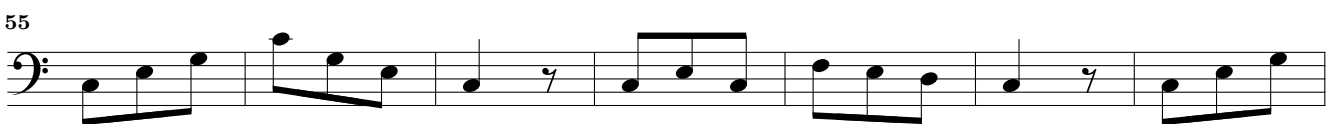
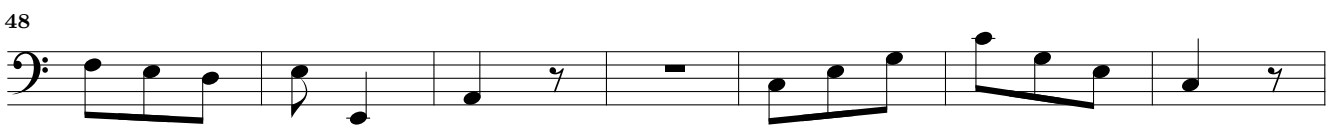
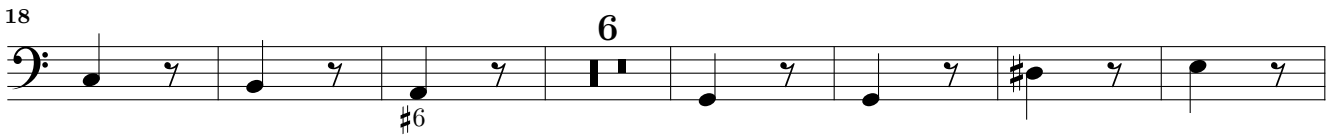
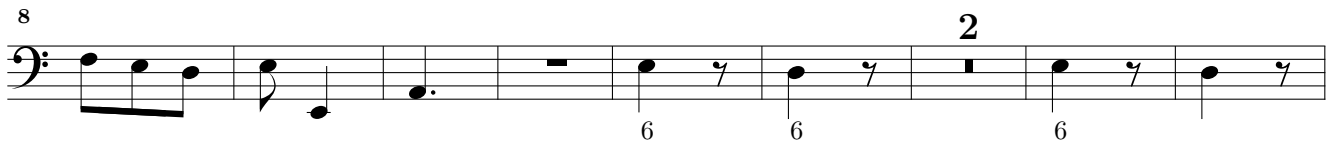
Musical score for '11. Andante' in bass clef, common time (C). The piece consists of six staves of music. The first staff begins with a treble clef and a common time signature. The music features a series of eighth and sixteenth notes, with some accidentals (sharps and naturals). The piece concludes with a double bar line.



12. Corrente



13. Air en Rondeau

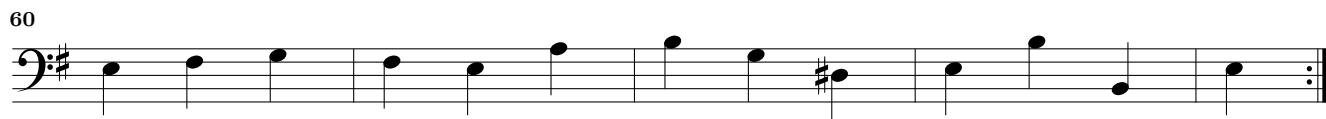
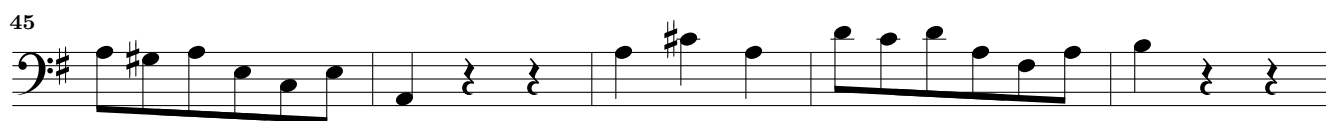


This page intentionally left blank.

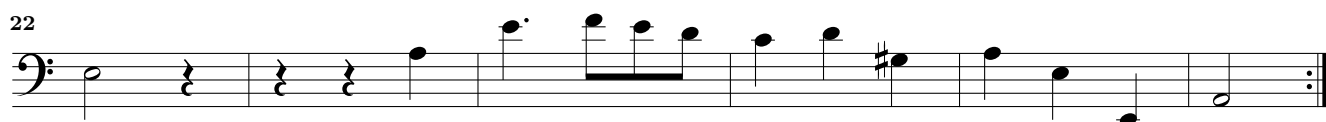
Sonata 5

14. Adagio

15. Corente



16. Sarabande



17. Andante

5

9

12

16

20

24

27

30

34

Sonata 6

18. Grave

3

6

9

12

19. Non presto

3

6

9

12

15

18

21

23

26

20. Ciciliane

6

11

16

21

26

31

36

41

46

21. Ecco

8

17

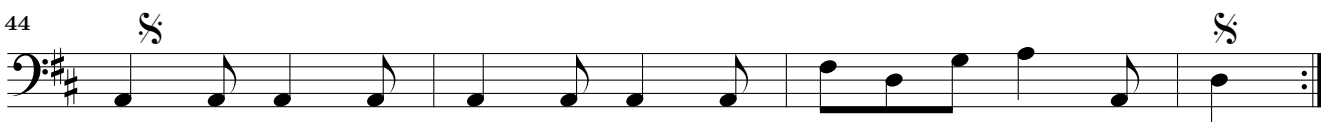
Musical score for Sonata 7, Basso, measures 24-61. The score is written in bass clef with a key signature of one sharp (F#) and a common time signature (C). The piece features a variety of rhythmic patterns, including eighth and sixteenth notes, and rests. Measure numbers 24, 32, 40, 46, 53, and 61 are indicated at the beginning of their respective staves. A '2' above the first staff indicates a second ending or measure repeat. A '3' above the second staff indicates a triplet. A '4' above the sixth staff indicates a fourth ending or measure repeat.

Sonata 7

22. —

Musical score for Sonata 7, Basso, measures 22-18. The score is written in bass clef with a key signature of one sharp (F#) and a common time signature (C). The piece features a variety of rhythmic patterns, including eighth and sixteenth notes, and rests. Measure numbers 4, 7, 11, 14, and 18 are indicated at the beginning of their respective staves.

23. —



24. —

3

6

9

12

15

19

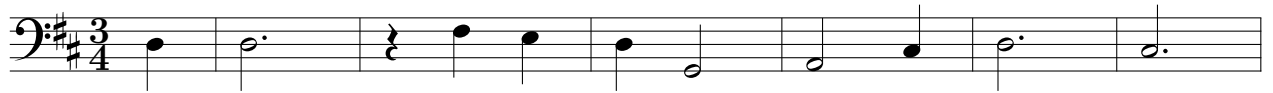
22

25

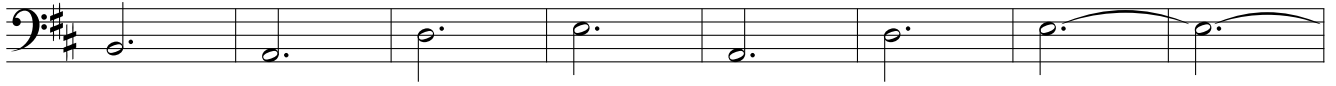
28

31

25. —



7



15



21



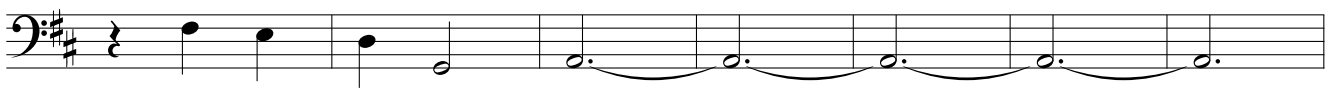
27



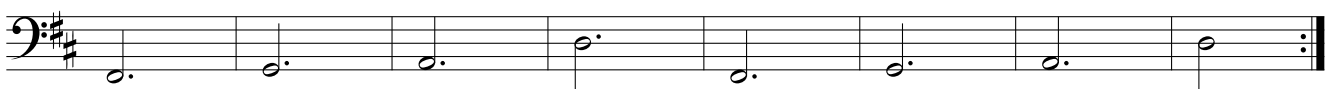
33



40



47



Sonata 8

26. Allegro

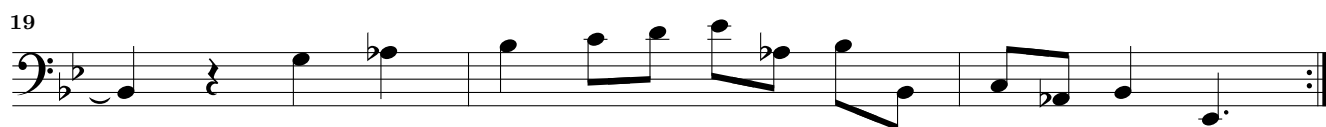


4

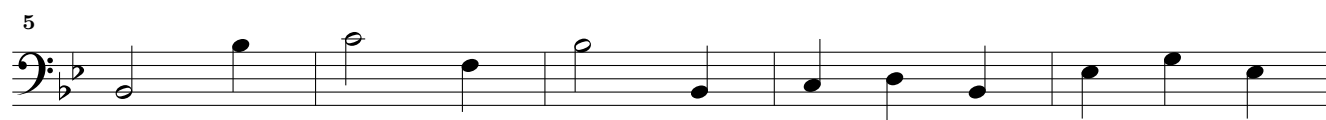


7

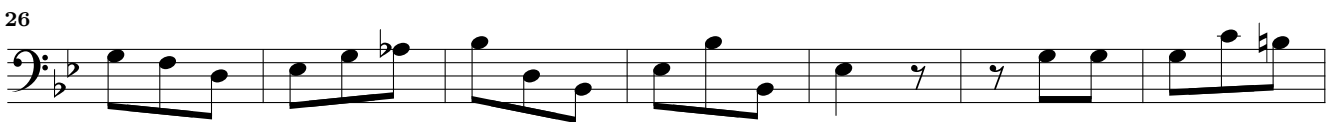




27. Adagio



28. —



29a. (Gigue)



16

22

27

31

36

Musical notation for measures 16-36, bass clef, key signature of two flats, 8/8 time signature. Measure 16 starts with a repeat sign. Measure 36 ends with a double bar line and repeat dots.

29b. Gigue

Musical notation for measures 1-21 of the Gigue, bass clef, key signature of two flats, 12/8 time signature. Measure 1 starts with a treble clef and a 12/8 time signature. Measure 10 contains a repeat sign. Measure 21 ends with a double bar line and repeat dots.

Sonata 9

30. —

Musical score for piece 30, measures 1-11. The score is written in bass clef with a key signature of two flats (B-flat and E-flat) and a common time signature (C). The melody consists of eighth and quarter notes, with some rests. Measure 11 ends with a double bar line.

31. —

Musical score for piece 31, measures 1-32. The score is written in bass clef with a key signature of two flats (B-flat and E-flat) and a common time signature (C). The melody is more complex, featuring sixteenth and thirty-second notes in some measures. Measure 32 ends with a double bar line.

32. —

6

12

16

22

25

29

33

Detailed description: This is the musical score for piece 32, written for bass clef in 3/4 time. The key signature has two flats (B-flat and E-flat). The score consists of seven staves of music. The first staff begins with a 7-measure rest followed by a melodic line. The second staff contains a single half note. The third staff continues the melodic line with some chromaticism. The fourth staff features a half note followed by two measures of rests. The fifth staff starts with a repeat sign and continues the melodic line. The sixth staff continues the melodic line with a half note. The seventh staff concludes the piece with a repeat sign and a final half note.

33. —

5

9

14

19

Detailed description: This is the musical score for piece 33, written for bass clef in 3/4 time. The key signature has two flats (B-flat and E-flat). The score consists of four staves of music. The first staff begins with a melodic line. The second staff continues the melodic line with a half note. The third staff continues the melodic line with some chromaticism. The fourth staff concludes the piece with a repeat sign and a final half note.

Sonata 10

34. Presto

Musical score for Sonata 10, Presto, Bassoon part. The score is written in bass clef with a key signature of one sharp (F#) and a common time signature (C). The piece consists of 34 measures, divided into systems of four measures each. The notation includes various rhythmic values such as eighth and sixteenth notes, rests, and dynamic markings like accents and slurs. The piece concludes with a double bar line and repeat dots at the end of the 34th measure.

35. Grave

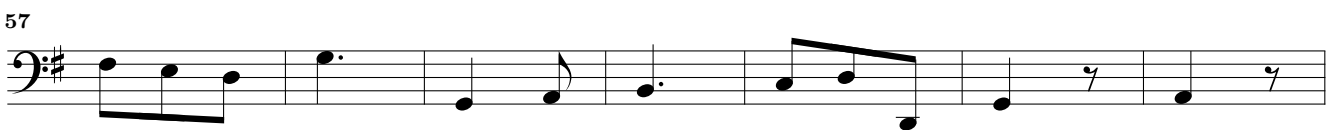
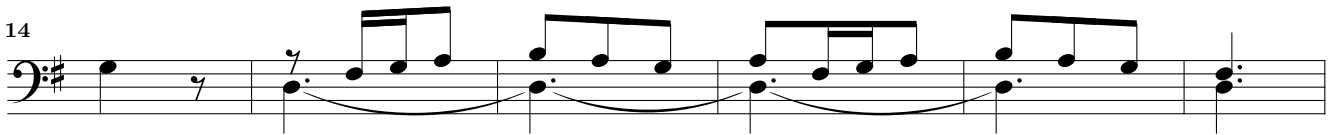
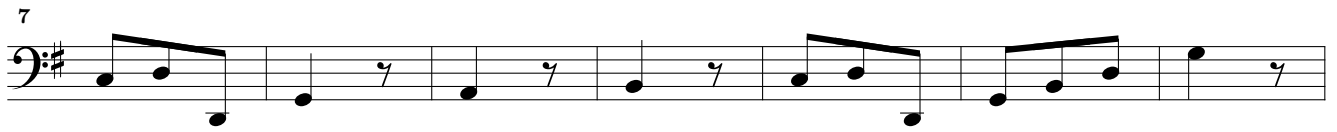
3

6

9

12

36. —



This page intentionally left blank.

Sonata 11

37. —



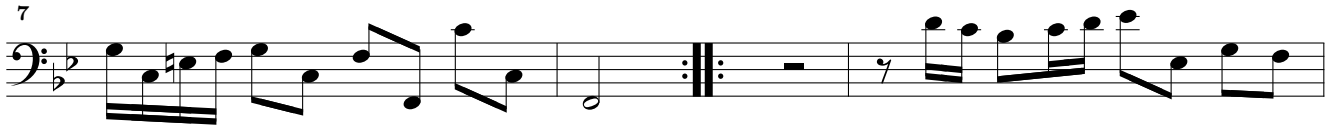
3



5



7



10



13



16

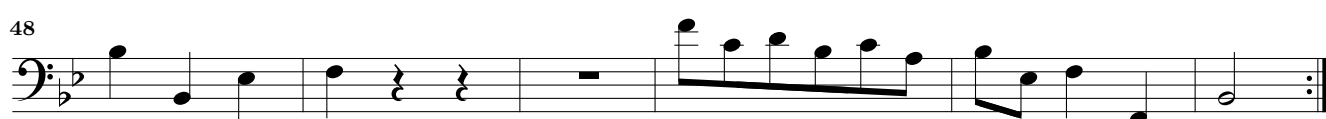
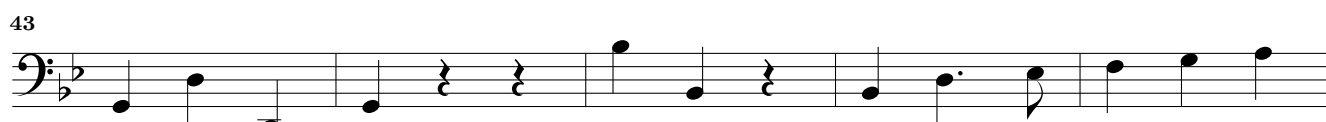
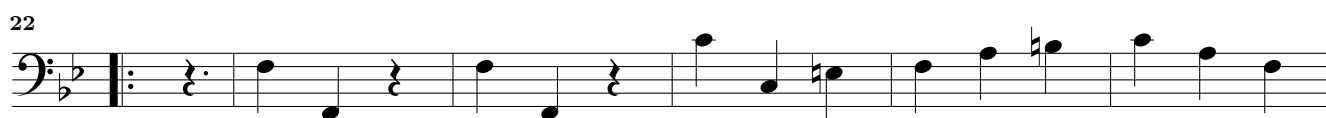
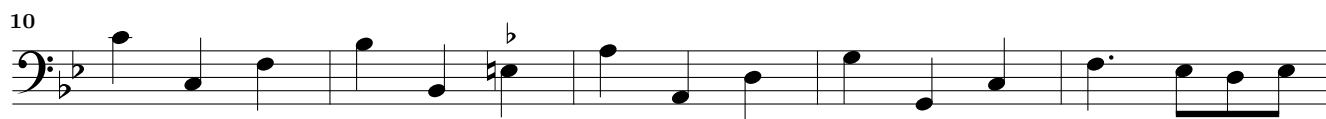


38. —

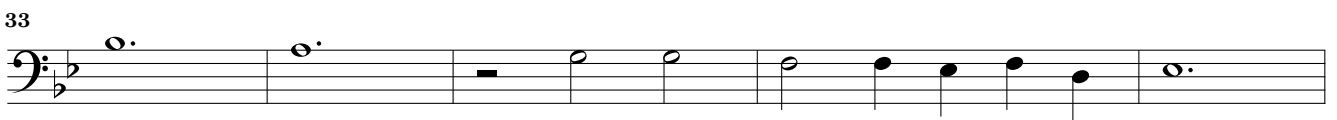
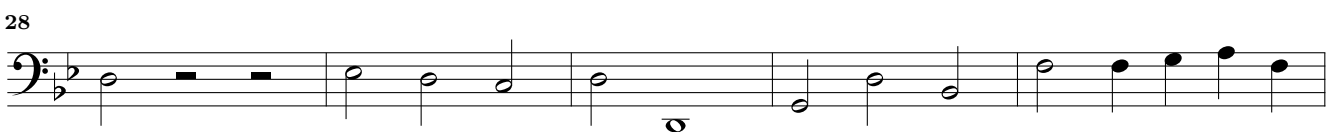
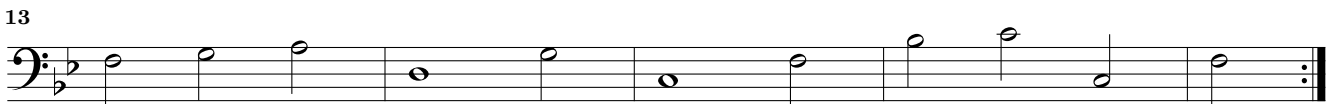
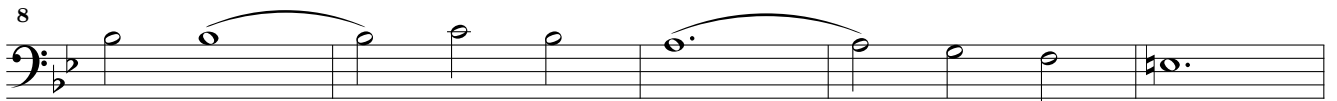
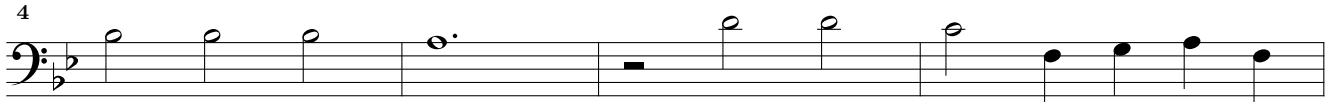


5

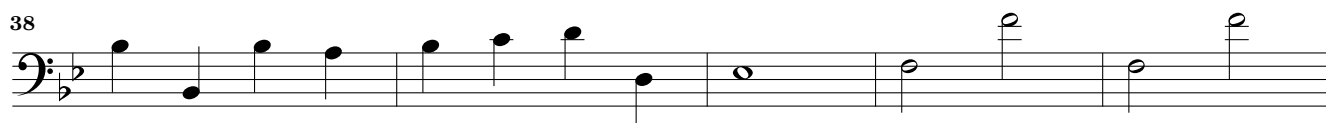
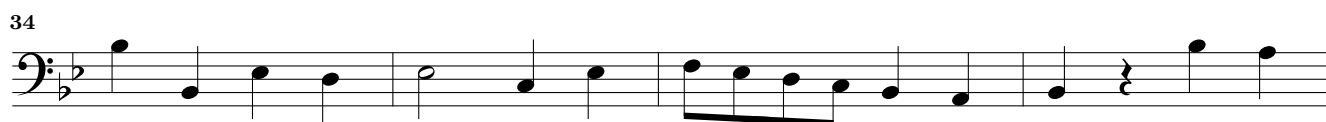
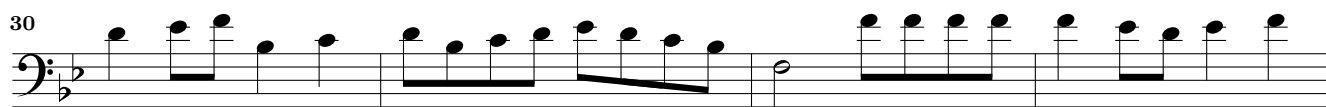
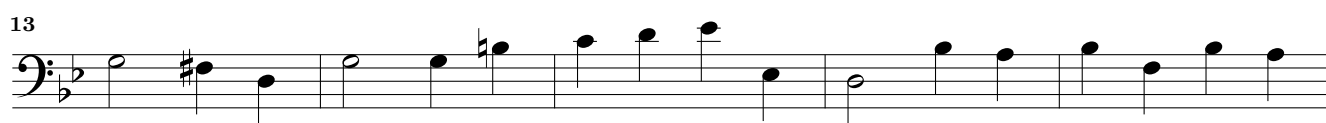
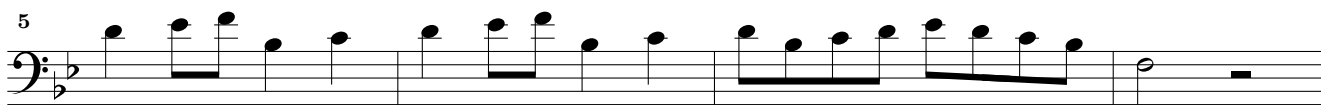
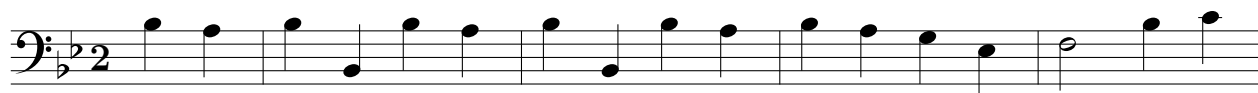




39. —

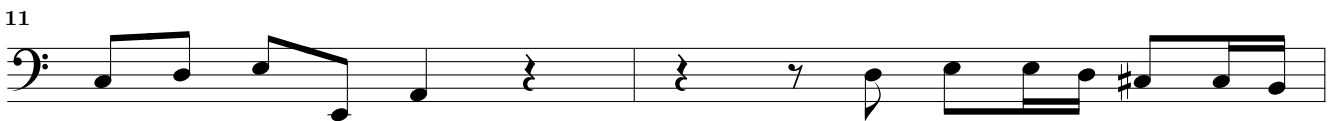
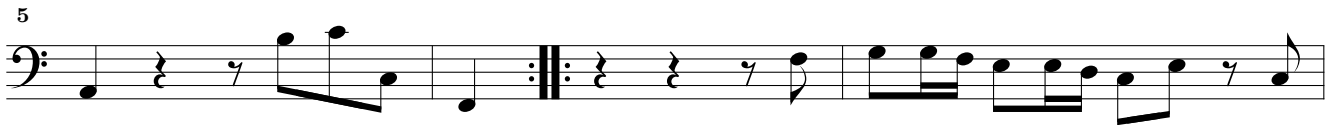
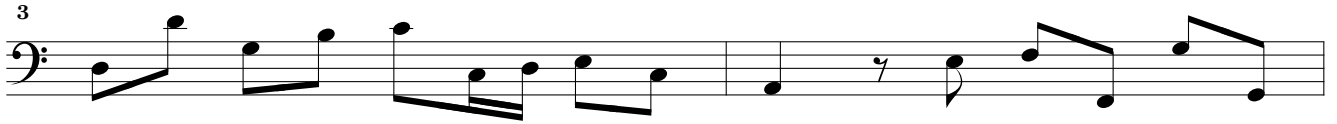


40. —



Sonata 12

41. —



42. —



7

9

12

14

17

20

22

24

26

43. —



44. —



This page intentionally left blank.

Sonata 13

45. Adagio

3

6

8

10

46. Allegro

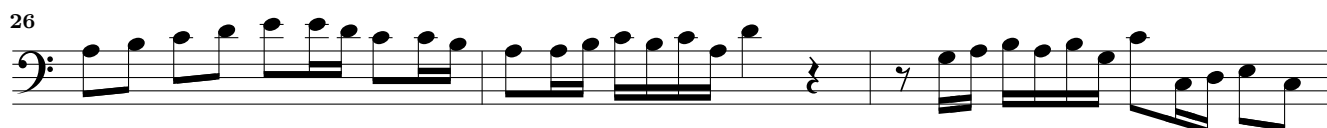
3

6

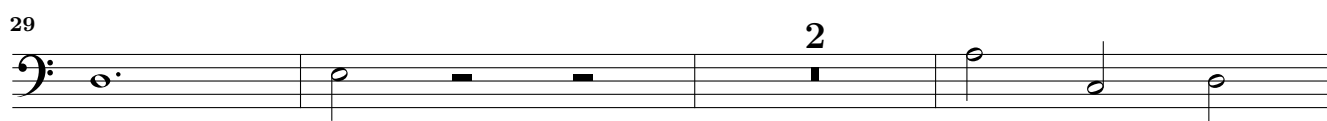
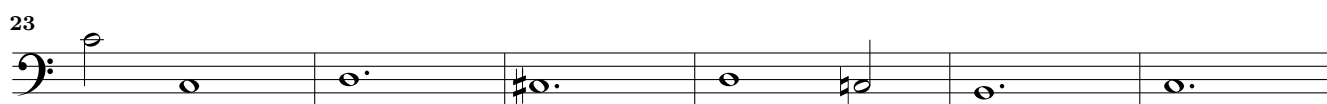
9

13

16



47. —



48. —

8

16

23

30

37

45

Sonata 14

49. —

3

6

10

13

16

19

(p)

50. —

3

6

9

12

15

18

21

24

27

31

51. Sarabande

6

10

15

20

25

Detailed description: This block contains the first 25 measures of the Sarabande. It is written in bass clef, 3/4 time, and B-flat major. The music features a slow, graceful melody with frequent rests and a steady bass line. Measure numbers 6, 10, 15, 20, and 25 are indicated at the start of their respective staves. The piece concludes with a double bar line and repeat dots at the end of measure 25.

52. —

6

13

19

25

32

38

44

50

57

Detailed description: This block contains the next 57 measures of the Sarabande. It is written in bass clef, 3/8 time, and B-flat major. The tempo is noticeably faster than the previous piece. The melody is more active, with many eighth and sixteenth notes. Measure numbers 6, 13, 19, 25, 32, 38, 44, 50, and 57 are indicated at the start of their respective staves. A first ending bracket with a '3' above it spans measures 10-12, with a first ending line above and a second ending line below. The piece concludes with a double bar line and repeat dots at the end of measure 57.

64

70

Sonata 15

53. — 2

8

13

21

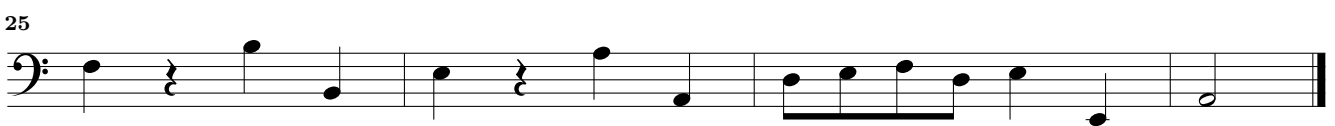
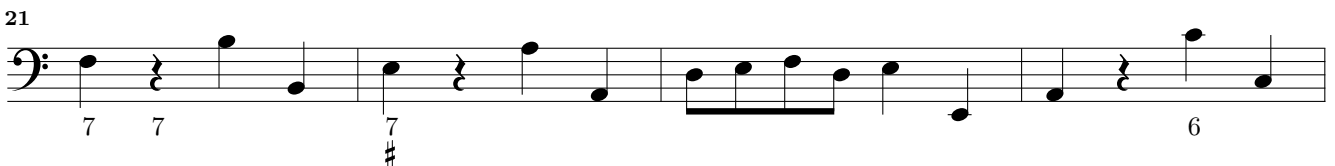
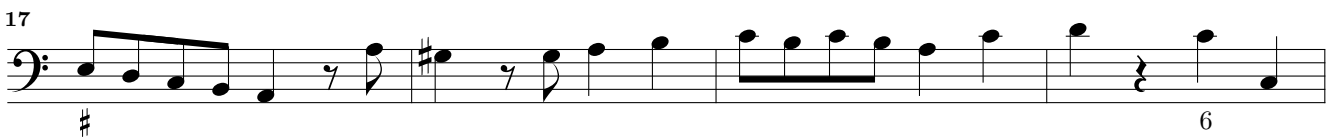
27

33

39

47

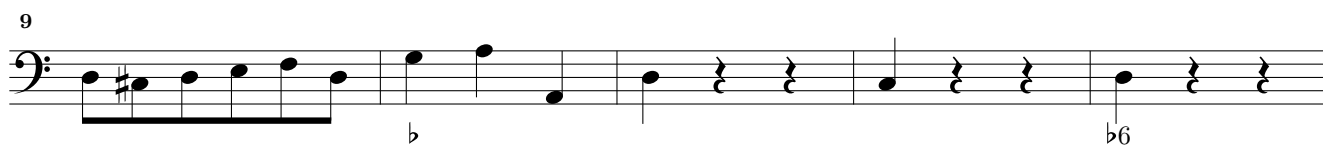
54. —



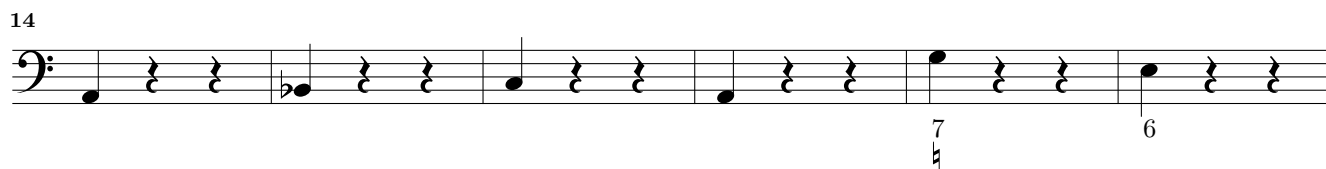
55. Courante



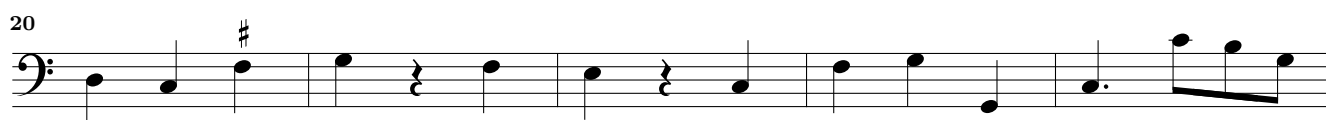
9



14



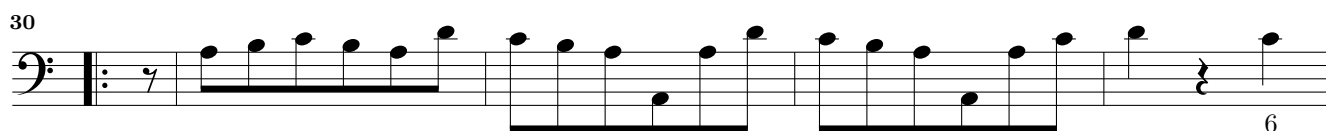
20



25



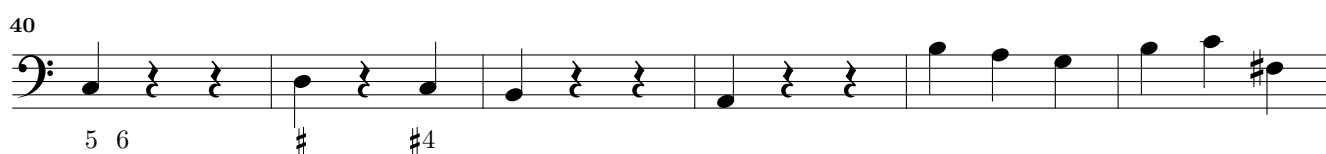
30



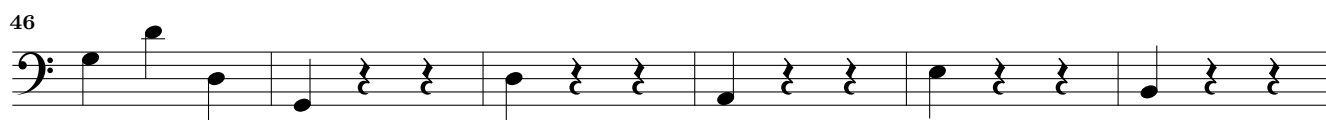
35



40



46



52



58



56. —

6

10

14

19

25

30

35

#7

#3

#4

#6

#

b7

#3

57. —

7

13

19

2

2

This page intentionally left blank.