

SONATE

à 3. 4. e 5.

Con alcune Allemand, Correnti e Balletti

à 3

Innsbruck 1653

William Young

?? – 1662

Published by Johan Tufvesson.

Non-commercial copying welcome

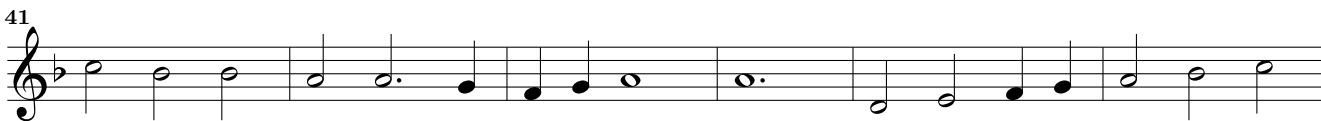
Revision : 1.2

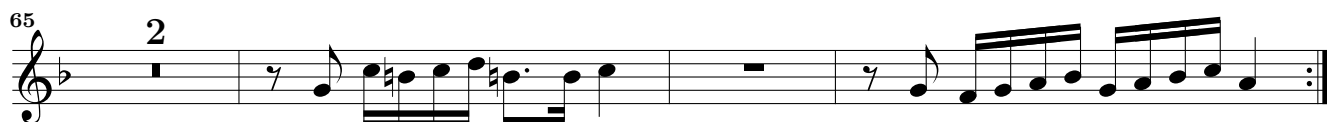
Name	Instr.	Page
Sonata Prima	2vl,viol,bc	<i>Tacet</i>
Sonata Secunda	2vl,viol,bc	<i>Tacet</i>
Sonata Terza	2vl,viol,bc	<i>Tacet</i>
Sonata Quarta	3vl,viol,bc	4
Sonata Quinta	3vl,viol,bc	6
Sonata Sesta	3vl,viol,bc	8
Sonata Settima	3vl,viol,bc	10
Sonata Ottava	3vl,viol,bc	12
Sonata Nona	3vl,viol,bc	14
Sonata Decima	3vl,viol,bc	15
Sonata Undecima	4vl,viol,bc	16
Allemand 1	2vl,viol,bc	<i>Tacet</i>
Allemand 2	2vl,viol,bc	<i>Tacet</i>
Corrente 1	2vl,viol,bc	<i>Tacet</i>
Allemand 3	2vl,viol,bc	<i>Tacet</i>
Corrente 2	2vl,viol,bc	<i>Tacet</i>
Allemand 4	2vl,viol,bc	<i>Tacet</i>
Allemand 5	2vl,viol,bc	<i>Tacet</i>
Corrente 3	2vl,viol,bc	<i>Tacet</i>
Corrente 4	2vl,viol,bc	<i>Tacet</i>
Saraband 1	2vl,viol,bc	<i>Tacet</i>
Corrente 5	2vl,viol,bc	<i>Tacet</i>
Allemand 6	2vl,viol,bc	<i>Tacet</i>
Corrente 6	2vl,viol,bc	<i>Tacet</i>
Saraband 2	2vl,viol,bc	<i>Tacet</i>
Allemand 7	2vl,viol,bc	<i>Tacet</i>
Corrente 7	2vl,viol,bc	<i>Tacet</i>
Balletto	2vl,viol,bc	<i>Tacet</i>
Corrente 8	2vl,viol,bc	<i>Tacet</i>
Corrente 9	2vl,viol,bc	<i>Tacet</i>

Violino Terzo

Sonata Quarta. à 4

William Young
(??-1662)

Adagio*Allegro**Adagio**Allegro*

Allegro*Canzona*

Sonata Quinta. à 4

2

6/4

6/4

7

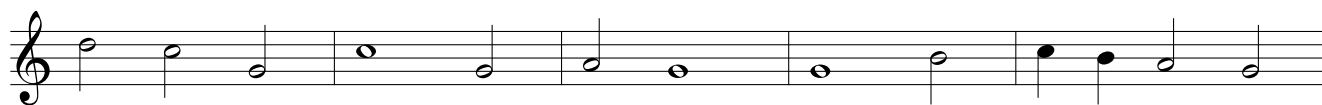
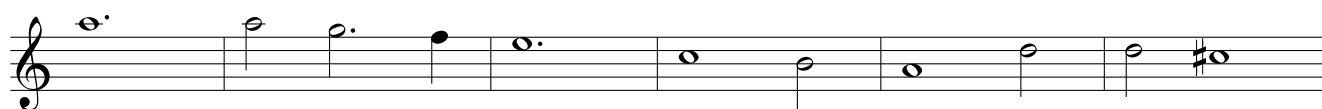
p

The first two staves of the musical score. The first staff begins with a treble clef, a common time signature (C), and a repeat sign. It contains a sequence of notes: a half note G4, a quarter note A4, a half note B4, a quarter note C5, a half note B4, a quarter note A4, a half note G4, and a quarter rest. The second staff continues with a half note G4, a quarter note F4, a half note E4, a quarter note D4, a half note C4, and a quarter rest, ending with a repeat sign.

Canzona

The musical notation for the *Canzona* section, consisting of eight staves. The first staff starts with a treble clef, a common time signature, and a repeat sign, followed by a series of eighth and sixteenth notes. The second staff continues with similar rhythmic patterns. The third staff introduces a key signature change to one sharp (F#) and continues with eighth notes. The fourth staff features a key signature change to two sharps (F# and C#) and includes a grace note (gamma symbol) over a sixteenth note. The fifth staff continues with eighth notes and a key signature change to one sharp. The sixth staff has a key signature change to two sharps and includes a fermata over a half note. The seventh staff continues with eighth notes and a key signature change to one sharp. The eighth staff concludes the piece with a half note, a fermata, and a double bar line.

Sonata Sesta. à 4

*Allegro*

6

p

p

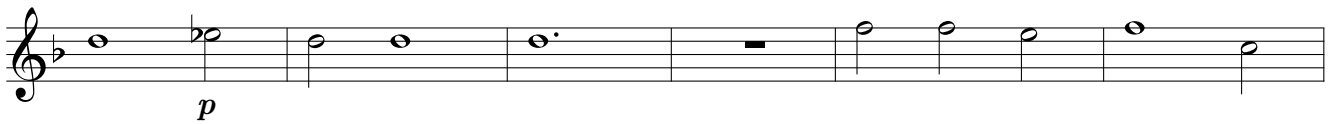
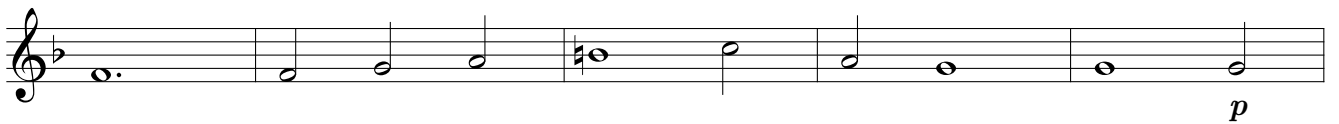
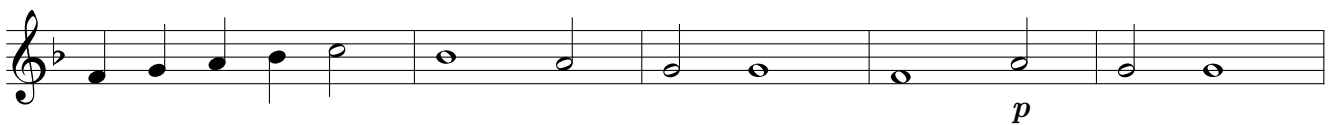
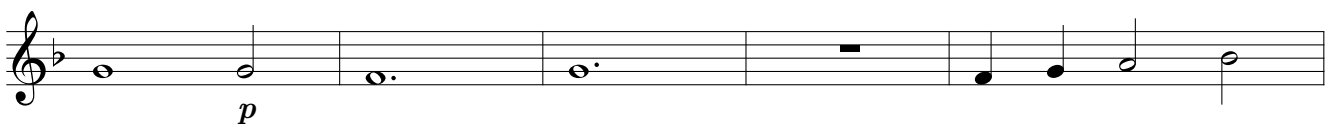
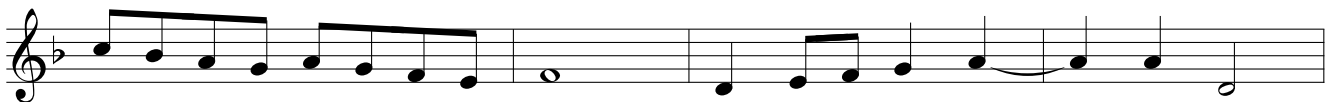
p

C

Canzona

C

Sonata Settima. à 4

*Allegro*

p

p

p

p

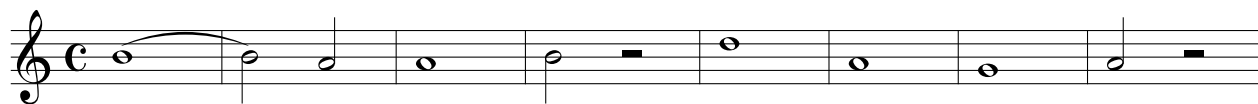
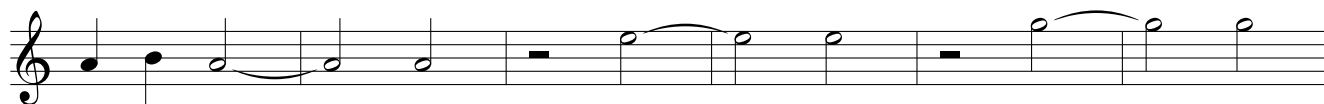
p

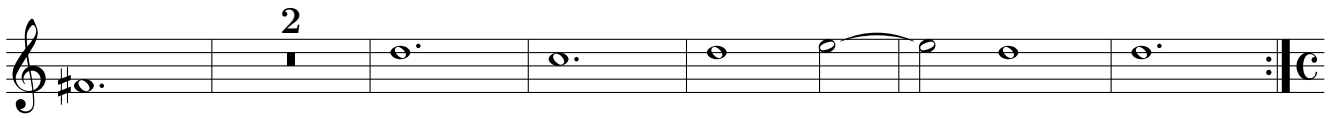
p

Canzona

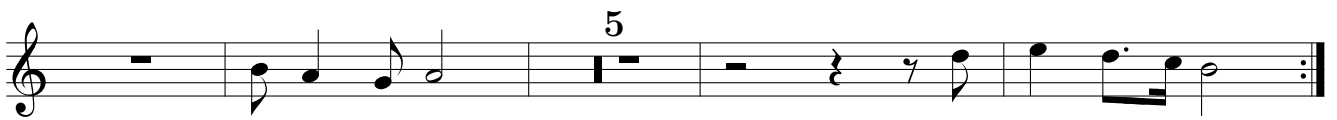
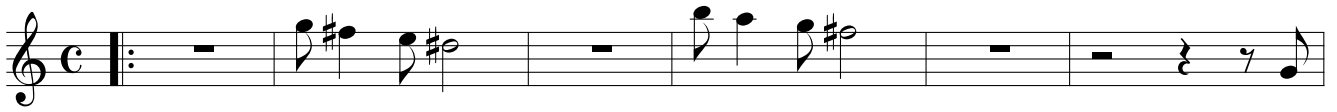
p

Sonata Ottava. à 4

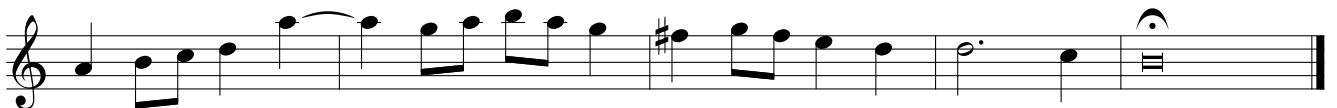
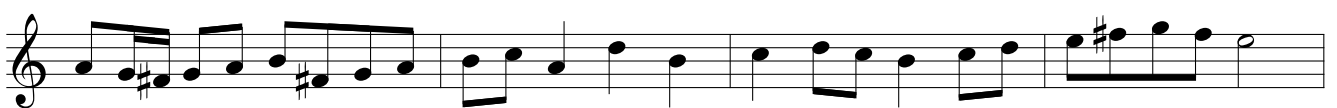
*Allegro*



Allegro



Canzona



Sonata Nona. à 4

Musical score for the first section of Sonata Nona. à 4, consisting of nine staves of music in G major and common time. The score includes various rhythmic values, including eighth and sixteenth notes, and rests. It concludes with a double bar line and a common time signature.

Canzona

Musical score for the *Canzona* section of Sonata Nona. à 4, consisting of six staves of music in G major and common time. The section begins with a repeat sign and a first ending bracket. It features a prominent eighth-note pattern in the lower staves, with a piano (*p*) dynamic marking. The section concludes with a double bar line.

Sonata Decima. à 4

Musical score for the first section of Sonata Decima. à 4, measures 1-12. The score is written in treble clef with a key signature of one flat (B-flat) and a time signature of 3/2. It consists of six staves. The first staff begins with a treble clef, a key signature of one flat, and a time signature of 3/2. The music features a series of eighth and quarter notes, with some rests. A second ending bracket is present at the end of the first staff, leading to a repeat sign. A second ending bracket is also present at the end of the sixth staff, leading to a repeat sign. A fermata is placed over the final note of the sixth staff.

Allegro

Musical score for the second section of Sonata Decima. à 4, measures 13-24. The score is written in treble clef with a key signature of one flat and a time signature of common time (C). It consists of four staves. The first staff begins with a treble clef, a key signature of one flat, and a time signature of common time. The music features a series of eighth and quarter notes, with some rests. A fermata is placed over the final note of the fourth staff.

Canzona

Musical score for the third section of Sonata Decima. à 4, measures 25-36. The score is written in treble clef with a key signature of one flat and a time signature of common time. It consists of six staves. The first staff begins with a treble clef, a key signature of one flat, and a time signature of common time. The music features a series of eighth and quarter notes, with some rests. A fermata is placed over the final note of the sixth staff.

Sonata Undecima. à 5

Musical notation for the first section of the Sonata Undecima. à 5, measures 1-18. The notation is in treble clef with a common time signature (C). It features a series of eighth and sixteenth notes, with some notes beamed together. The key signature has one sharp (F#). The section concludes with a double bar line and repeat dots.

Allegro

29

18

Resposte

Musical notation for the *Resposte* section of the Sonata Undecima. à 5, measures 19-28. The notation is in treble clef with a common time signature (C). It features a series of eighth and sixteenth notes, with some notes beamed together. The key signature has one sharp (F#). The section concludes with a double bar line and repeat dots.

Canzona

Musical notation for the *Canzona* section of the Sonata Undecima. à 5, measures 29-38. The notation is in treble clef with a common time signature (C). It features a series of eighth and sixteenth notes, with some notes beamed together. The key signature has one sharp (F#). The section concludes with a double bar line and repeat dots.