

Studenten-Music

Leipzig 1654

Johann Rosenmüller
c.1619 – 1684

Published by Johan Tufvesson.

Non-commercial copying welcome

Revision : 1.2

Studenten-Music

Leipzig 1654

Johann Rosenmüller

(c.1619–1684)

1-7 Paduan à 3

Tacet

8. Paduan à 5

6

11

16

21

25

29

32

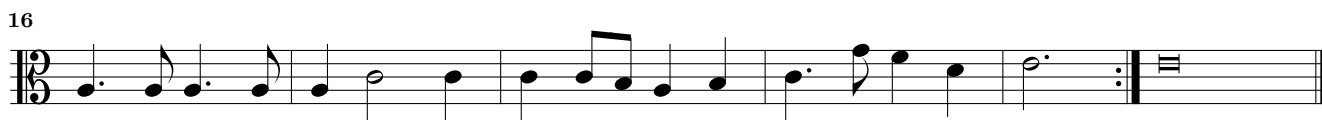
37

42

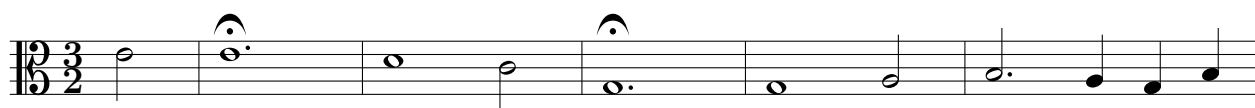
46

50

9. Alemanda



10. Courant Adagio



11. Courant Allegro



12. Alemanda



5



9



14



13. Courant



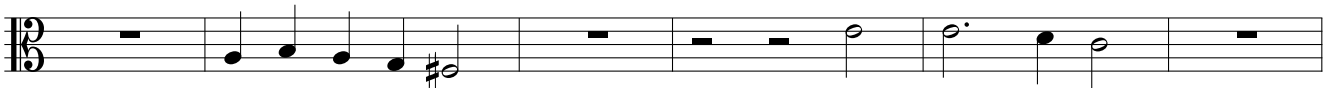
7



13



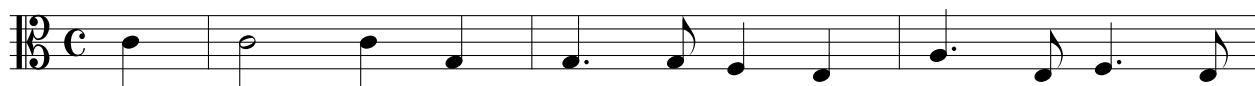
19



25



14. Ballo



4

Adagio



8

Allegro



12



15. Sarabanda



5



9



13



16. Paduan



6



11



17



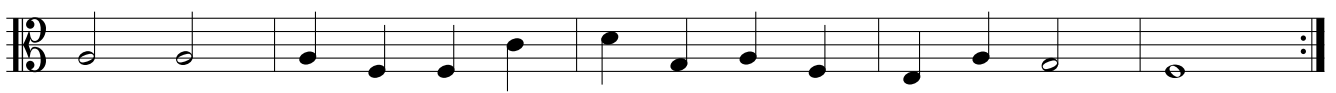
23



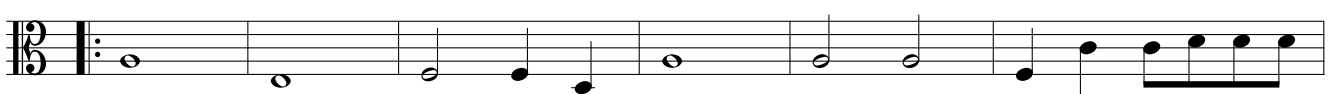
28



32



37



43



47



53



17. Alemanda

Musical score for 17. Alemanda, Tenor part. The piece is in common time (C) and G major. It consists of four staves of music. The first staff starts with a treble clef and a common time signature. The second staff begins at measure 6. The third staff begins at measure 10 and contains a first ending bracket. The fourth staff begins at measure 16 and contains a second ending bracket. The key signature changes to A major (one sharp) at the end of the piece.

18. Courant

Musical score for 18. Courant, Tenor part. The piece is in 3/2 time and G major. It consists of three staves of music. The first staff starts with a treble clef and a 3/2 time signature. The second staff begins at measure 6 and features a long note with a fermata. The third staff begins at measure 12 and contains a first ending bracket. The fourth staff begins at measure 19 and contains a second ending bracket.

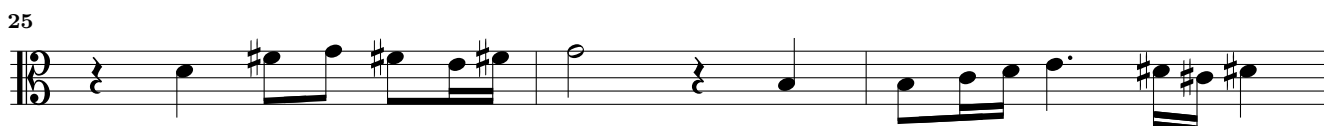
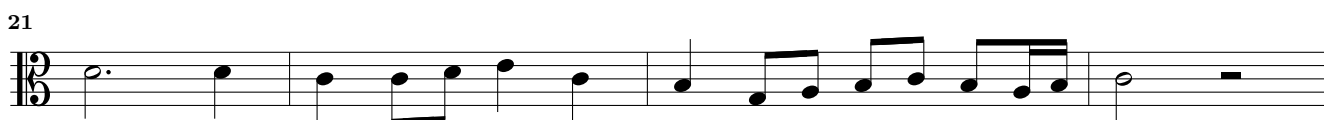
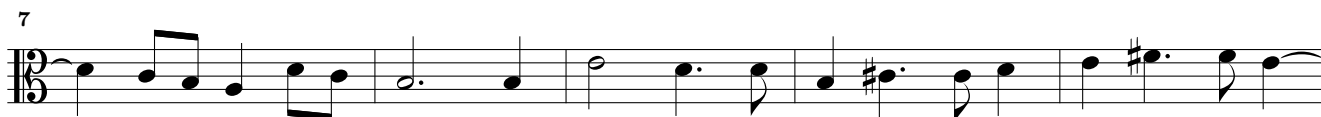
19. Ballo Adagio

Musical score for 19. Ballo Adagio, Tenor part. The piece is in common time (C) and G major. It consists of two staves of music. The first staff starts with a treble clef and a common time signature. The second staff begins at measure 5 and is marked *Allegro*. It contains a first ending bracket. The third staff begins at measure 9 and contains a second ending bracket. A flat (b) is placed above the staff at measure 9.

20. Sarabanda

Musical score for 20. Sarabanda, Tenor part. The piece is in 3/2 time and G major. It consists of three staves of music. The first staff starts with a treble clef and a 3/2 time signature. The second staff begins at measure 7 and contains a first ending bracket. The third staff begins at measure 12 and contains a second ending bracket.

21. Paduan



22. Ballo



5



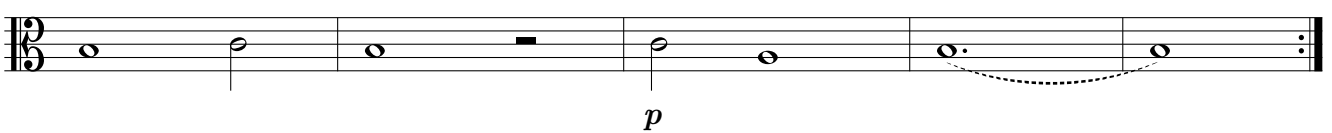
23. Courant



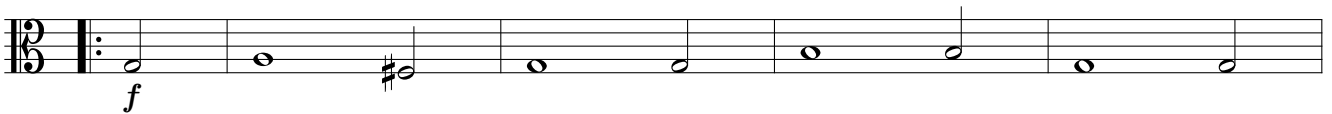
5



10



14



19



23



24. Paduan



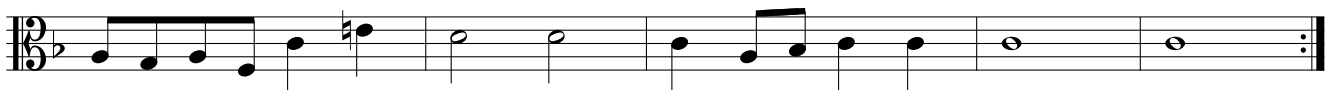
6



10



14



19



24



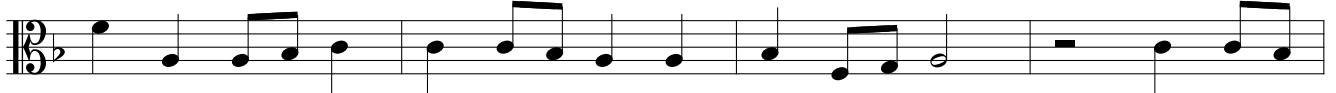
29



33



38



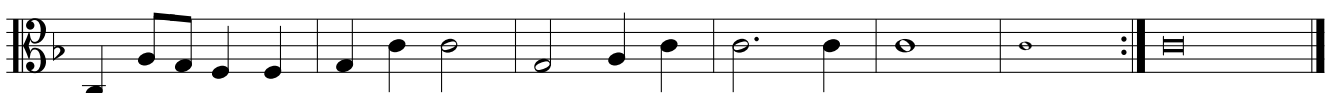
42



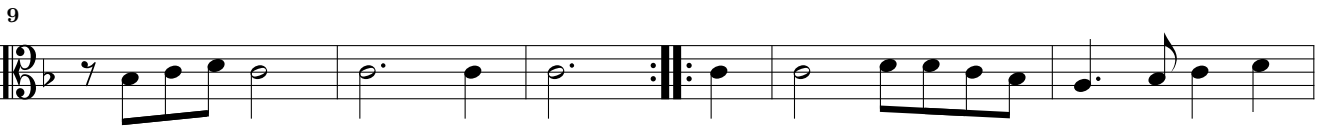
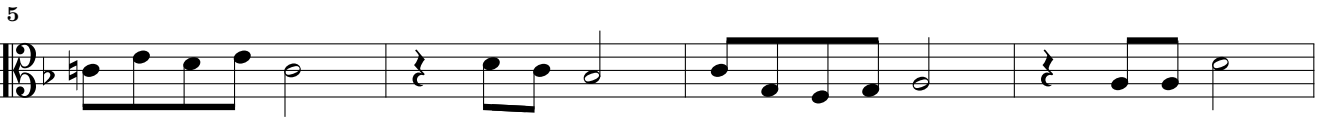
46



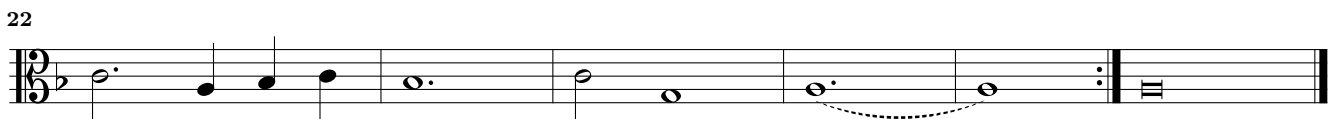
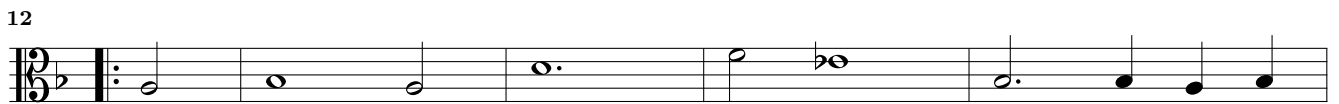
51



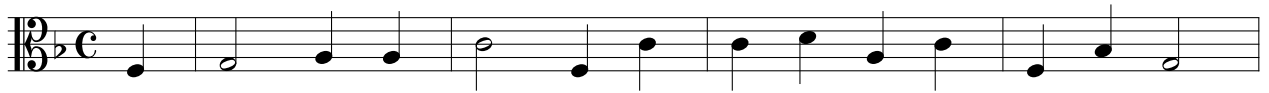
25. Alemanda



26. Courant



27. Alemanda

Studenten-Music – 29. Sarabanda – Tenor

5



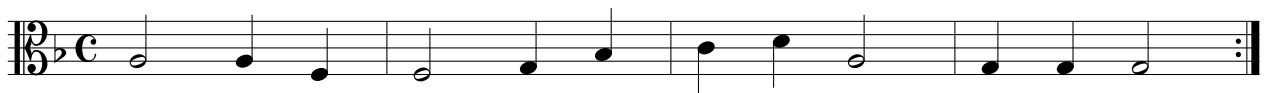
8



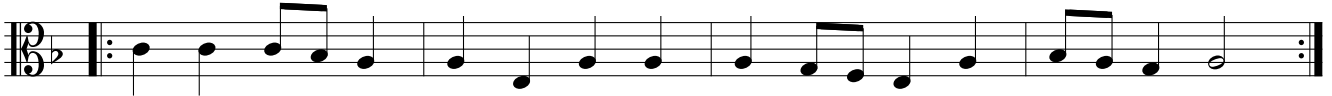
13



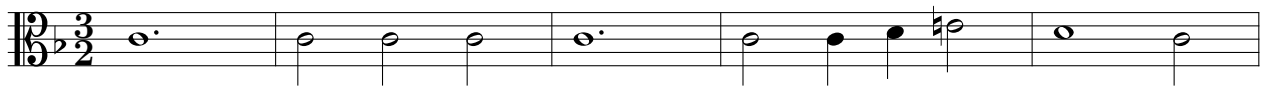
28. Ballo



5



29. Sarabanda



6



12



This page intentionally left blank.

30. Paduan



5



9



12



17



22



25



29



33



37



40



45



31. Alemanda

Musical score for 31. Alemanda, Tenor. The piece is in C major and common time (C). It consists of 13 measures. The notation is in bass clef. The first measure starts with a C4 note. The second measure has a G4 note. The third measure has a B4 note. The fourth measure has an A4 note. The fifth measure has a G4 note. The sixth measure has a F#4 note. The seventh measure has an E4 note. The eighth measure has a D4 note. The ninth measure has a C4 note. The tenth measure has a B4 note. The eleventh measure has an A4 note. The twelfth measure has a G4 note. The thirteenth measure has a C4 note. The score includes repeat signs and a double bar line at the end.

32. Courant

Musical score for 32. Courant, Tenor. The piece is in C major and 3/2 time. It consists of 17 measures. The notation is in bass clef. The first measure starts with a C4 note. The second measure has a G4 note. The third measure has a B4 note. The fourth measure has an A4 note. The fifth measure has a G4 note. The sixth measure has a F#4 note. The seventh measure has an E4 note. The eighth measure has a D4 note. The ninth measure has a C4 note. The tenth measure has a B4 note. The eleventh measure has an A4 note. The twelfth measure has a G4 note. The thirteenth measure has a F#4 note. The fourteenth measure has an E4 note. The fifteenth measure has a D4 note. The sixteenth measure has a C4 note. The seventeenth measure has a C4 note. The score includes repeat signs and a double bar line at the end.

33. Ballo *Allegro*

Musical score for 33. Ballo *Allegro*, Tenor. The piece is in C major and common time (C). It consists of 5 measures. The notation is in bass clef. The first measure starts with a C4 note. The second measure has a G4 note. The third measure has a B4 note. The fourth measure has an A4 note. The fifth measure has a G4 note. The score includes repeat signs and a double bar line at the end.

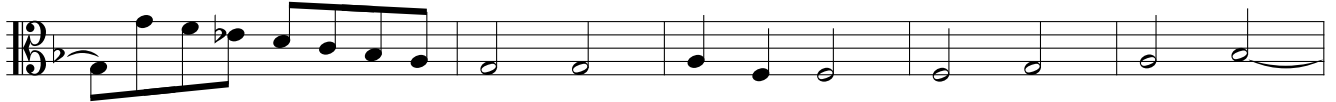
34. Sarabanda

Musical score for 34. Sarabanda, Tenor. The piece is in C major and 3/2 time. It consists of 12 measures. The notation is in bass clef. The first measure starts with a C4 note. The second measure has a G4 note. The third measure has a B4 note. The fourth measure has an A4 note. The fifth measure has a G4 note. The sixth measure has a F#4 note. The seventh measure has an E4 note. The eighth measure has a D4 note. The ninth measure has a C4 note. The tenth measure has a B4 note. The eleventh measure has an A4 note. The twelfth measure has a C4 note. The score includes repeat signs and a double bar line at the end.

35. Paduan



6



11



15



20



25



29



33



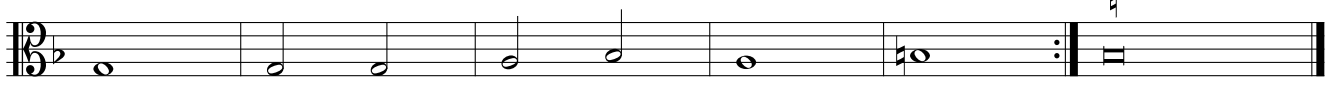
37



41



46



36. Alemanda

Musical score for 36. Alemanda, Tenor part. The piece is in 2/4 time and B-flat major. It consists of three staves of music. The first staff starts with a treble clef, a key signature of one flat, and a common time signature. The second staff begins with a measure rest labeled '5'. The third staff begins with a measure rest labeled '8'. The piece concludes with a double bar line and repeat dots.

37. Courant

Musical score for 37. Courant, Tenor part. The piece is in 3/2 time and B-flat major. It consists of three staves of music. The first staff starts with a treble clef, a key signature of one flat, and a 3/2 time signature. The second staff begins with a measure rest labeled '6'. The third staff begins with a measure rest labeled '12'. The piece concludes with a double bar line and repeat dots.

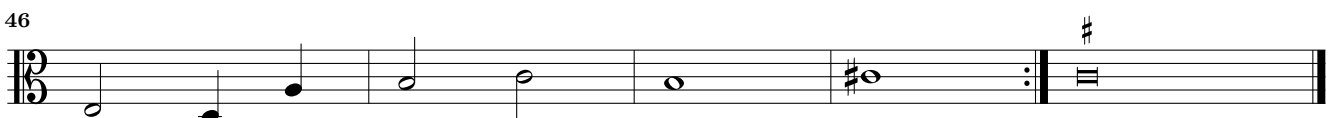
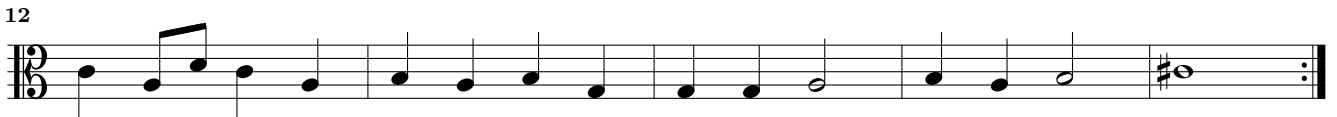
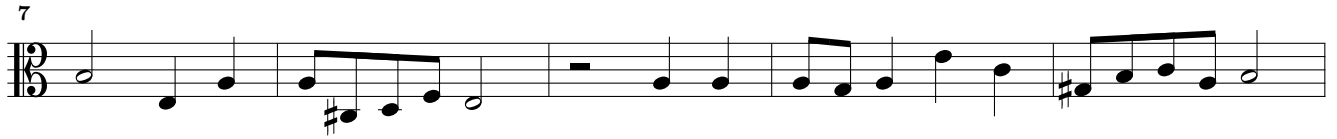
38. Ballo Adagio

Musical score for 38. Ballo Adagio, Tenor part. The piece is in 2/4 time and B-flat major. It consists of three staves of music. The first staff starts with a treble clef, a key signature of one flat, and a common time signature. The second staff begins with a measure rest labeled '5'. The tempo marking *Allegro* is placed above the second staff. The third staff begins with a measure rest labeled '9'. The piece concludes with a double bar line and repeat dots.

39. Sarabanda

Musical score for 39. Sarabanda, Tenor part. The piece is in 3/2 time and B-flat major. It consists of three staves of music. The first staff starts with a treble clef, a key signature of one flat, and a 3/2 time signature. The second staff begins with a measure rest labeled '6'. The third staff begins with a measure rest labeled '12'. The piece concludes with a double bar line and repeat dots.

40. Paduan



41. Alemanda

Musical score for Alemanda, measures 1-12. The piece is in C major and common time (C). The notation is in bass clef. Measure 1 starts with a half note C4, followed by quarter notes D4, E4, F4, G4, A4, B4, C5. Measure 2 has a half note C5, followed by quarter notes B4, A4, G4, F4, E4, D4, C4. Measure 3 has a half note C4, followed by quarter notes D4, E4, F4, G4, A4, B4, C5. Measure 4 has a half note C5, followed by quarter notes B4, A4, G4, F4, E4, D4, C4. Measure 5 has a half note C4, followed by quarter notes D4, E4, F4, G4, A4, B4, C5. Measure 6 has a half note C5, followed by quarter notes B4, A4, G4, F4, E4, D4, C4. Measure 7 has a half note C4, followed by quarter notes D4, E4, F4, G4, A4, B4, C5. Measure 8 has a half note C5, followed by quarter notes B4, A4, G4, F4, E4, D4, C4. Measure 9 has a half note C4, followed by quarter notes D4, E4, F4, G4, A4, B4, C5. Measure 10 has a half note C5, followed by quarter notes B4, A4, G4, F4, E4, D4, C4. Measure 11 has a half note C4, followed by quarter notes D4, E4, F4, G4, A4, B4, C5. Measure 12 has a half note C5, followed by quarter notes B4, A4, G4, F4, E4, D4, C4. The piece ends with a double bar line and repeat sign.

42. Courant

Musical score for Courant, measures 1-20. The piece is in D major and 3/2 time. The notation is in bass clef. Measure 1 starts with a half note D3, followed by quarter notes E3, F3, G3, A3, B3, C4. Measure 2 has a half note D3, followed by quarter notes E3, F3, G3, A3, B3, C4. Measure 3 has a half note D3, followed by quarter notes E3, F3, G3, A3, B3, C4. Measure 4 has a half note D3, followed by quarter notes E3, F3, G3, A3, B3, C4. Measure 5 has a half note D3, followed by quarter notes E3, F3, G3, A3, B3, C4. Measure 6 has a half note D3, followed by quarter notes E3, F3, G3, A3, B3, C4. Measure 7 has a half note D3, followed by quarter notes E3, F3, G3, A3, B3, C4. Measure 8 has a half note D3, followed by quarter notes E3, F3, G3, A3, B3, C4. Measure 9 has a half note D3, followed by quarter notes E3, F3, G3, A3, B3, C4. Measure 10 has a half note D3, followed by quarter notes E3, F3, G3, A3, B3, C4. Measure 11 has a half note D3, followed by quarter notes E3, F3, G3, A3, B3, C4. Measure 12 has a half note D3, followed by quarter notes E3, F3, G3, A3, B3, C4. Measure 13 has a half note D3, followed by quarter notes E3, F3, G3, A3, B3, C4. Measure 14 has a half note D3, followed by quarter notes E3, F3, G3, A3, B3, C4. Measure 15 has a half note D3, followed by quarter notes E3, F3, G3, A3, B3, C4. Measure 16 has a half note D3, followed by quarter notes E3, F3, G3, A3, B3, C4. Measure 17 has a half note D3, followed by quarter notes E3, F3, G3, A3, B3, C4. Measure 18 has a half note D3, followed by quarter notes E3, F3, G3, A3, B3, C4. Measure 19 has a half note D3, followed by quarter notes E3, F3, G3, A3, B3, C4. Measure 20 has a half note D3, followed by quarter notes E3, F3, G3, A3, B3, C4. The piece ends with a double bar line and repeat sign.

43. Ballo

Musical score for Ballo, measures 1-5. The piece is in C major and common time (C). The notation is in bass clef. Measure 1 starts with a half note C4, followed by quarter notes D4, E4, F4, G4, A4, B4, C5. Measure 2 has a half note C5, followed by quarter notes B4, A4, G4, F4, E4, D4, C4. Measure 3 has a half note C4, followed by quarter notes D4, E4, F4, G4, A4, B4, C5. Measure 4 has a half note C5, followed by quarter notes B4, A4, G4, F4, E4, D4, C4. Measure 5 has a half note C4, followed by quarter notes D4, E4, F4, G4, A4, B4, C5. The piece ends with a double bar line and repeat sign.

44. Sarabanda

Musical score for Sarabanda, measures 1-11. The piece is in D major and 3/2 time. The notation is in bass clef. Measure 1 starts with a half note D3, followed by quarter notes E3, F3, G3, A3, B3, C4. Measure 2 has a half note D3, followed by quarter notes E3, F3, G3, A3, B3, C4. Measure 3 has a half note D3, followed by quarter notes E3, F3, G3, A3, B3, C4. Measure 4 has a half note D3, followed by quarter notes E3, F3, G3, A3, B3, C4. Measure 5 has a half note D3, followed by quarter notes E3, F3, G3, A3, B3, C4. Measure 6 has a half note D3, followed by quarter notes E3, F3, G3, A3, B3, C4. Measure 7 has a half note D3, followed by quarter notes E3, F3, G3, A3, B3, C4. Measure 8 has a half note D3, followed by quarter notes E3, F3, G3, A3, B3, C4. Measure 9 has a half note D3, followed by quarter notes E3, F3, G3, A3, B3, C4. Measure 10 has a half note D3, followed by quarter notes E3, F3, G3, A3, B3, C4. Measure 11 has a half note D3, followed by quarter notes E3, F3, G3, A3, B3, C4. The piece ends with a double bar line and repeat sign.

45. Paduan



6



10



14



19



23



26



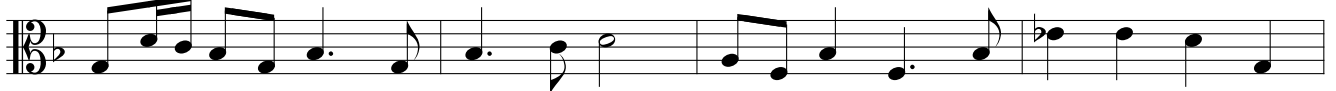
30



35



40



44



48



46. Alemanda

Musical score for 46. Alemanda, Tenor part. The score is in 2/4 time and B-flat major. It consists of four staves of music. The first staff starts with a treble clef and a common time signature. The second staff has a measure rest of 4. The third staff has a measure rest of 7. The fourth staff has a measure rest of 12. The piece ends with a double bar line and repeat dots.

47. Courant

Musical score for 47. Courant, Tenor part. The score is in 3/2 time and B-flat major. It consists of three staves of music. The first staff starts with a treble clef and a 3/2 time signature. The second staff has a measure rest of 7. The third staff has a measure rest of 12. The fourth staff has a measure rest of 19. The piece ends with a double bar line and repeat dots.

48. Ballo Adagio

Musical score for 48. Ballo Adagio, Tenor part. The score is in 2/4 time and B-flat major. It consists of three staves of music. The first staff starts with a treble clef and a common time signature. The second staff has a measure rest of 5. The third staff has a measure rest of 9. The piece ends with a double bar line and repeat dots.

49. Sarabanda

Musical score for 49. Sarabanda, Tenor part. The score is in 3/2 time and B-flat major. It consists of three staves of music. The first staff starts with a treble clef and a 3/2 time signature. The second staff has a measure rest of 7. The third staff has a measure rest of 12. The piece ends with a double bar line and repeat dots.

50. Paduan



6



11



17



22



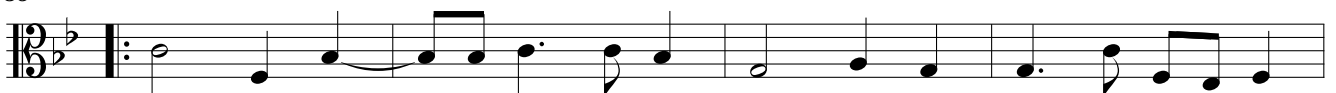
26



30



35



39



43



46



49



51. Alemanda

Musical score for 51. Alemanda, Tenor part. The piece is in 2/4 time, key of B-flat major. It consists of four staves of music. The first staff starts with a treble clef, a key signature of two flats, and a common time signature. The melody is written in a simple, rhythmic style. The second staff continues the melody. The third staff has a repeat sign at the beginning. The fourth staff ends with a double bar line and repeat dots.

52. Courant

Musical score for 52. Courant, Tenor part. The piece is in 3/2 time, key of B-flat major. It consists of six staves of music. The first staff starts with a treble clef, a key signature of two flats, and a 3/2 time signature. The melody is written in a simple, rhythmic style. The second staff continues the melody. The third staff has a repeat sign at the beginning. The fourth staff has a repeat sign at the end. The fifth staff continues the melody. The sixth staff ends with a double bar line and repeat dots.

53. Ballo *Adagio Adagio*

Musical score for 53. Ballo *Adagio Adagio*, Tenor part. The piece is in 2/4 time, key of B-flat major. It consists of two staves of music. The first staff starts with a treble clef, a key signature of two flats, and a common time signature. The melody is written in a simple, rhythmic style. The second staff continues the melody and ends with a double bar line and repeat dots. The tempo marking *Allegro* is placed above the second staff.

54. Sarabanda

Musical score for 54. Sarabanda, Tenor part. The piece is in 3/2 time, key of B-flat major. It consists of three staves of music. The first staff starts with a treble clef, a key signature of two flats, and a 3/2 time signature. The melody is written in a simple, rhythmic style. The second staff continues the melody. The third staff ends with a double bar line and repeat dots.

55. Paduan

The image displays a musical score for a piece titled "55. Paduan". The score is written in a single system with ten staves. The key signature is one sharp (F#), and the time signature is common time (C). The notation includes various rhythmic values such as quarter, eighth, and sixteenth notes, as well as rests and repeat signs. The piece concludes with a double bar line and repeat dots.

56. Alemanda

Musical score for 'Alemanda' in G major, common time (C). The piece consists of four staves of music. The first staff begins with a treble clef, a key signature of one sharp (F#), and a common time signature. The melody is written in a simple, rhythmic style. The second staff contains a first ending with a repeat sign and a double bar line. The third staff contains a second ending with a repeat sign and a double bar line. The fourth staff concludes the piece with a final double bar line.

57. Courant

Musical score for 'Courant' in G major, 3/2 time. The piece consists of eight staves of music. The first staff begins with a treble clef, a key signature of one sharp (F#), and a 3/2 time signature. The melody is written in a simple, rhythmic style. The second staff contains a first ending with a repeat sign and a double bar line. The third staff contains a second ending with a repeat sign and a double bar line. The fourth staff contains a third ending with a repeat sign and a double bar line. The fifth staff contains a fourth ending with a repeat sign and a double bar line. The sixth staff contains a fifth ending with a repeat sign and a double bar line. The seventh staff contains a sixth ending with a repeat sign and a double bar line. The eighth staff concludes the piece with a final double bar line.

58. Ballo

Musical score for Ballo, Tenor part. The score consists of four staves of music in G major (one sharp) and common time (C). The first staff begins with a treble clef and a common time signature. The music features a series of eighth and quarter notes, with some beamed eighth notes. The second staff ends with a repeat sign and a double bar line. The third staff begins with a repeat sign and a double bar line. The fourth staff ends with a repeat sign, a double bar line, and a final double bar line.

59. Courant

Musical score for Courant, Tenor part. The score consists of five staves of music in G major (one sharp) and 3/2 time. The first staff begins with a treble clef and a 3/2 time signature. The music features a series of quarter and half notes. The second staff ends with a repeat sign and a double bar line. The third staff begins with a repeat sign and a double bar line. The fourth staff ends with a repeat sign and a double bar line. The fifth staff ends with a repeat sign, a double bar line, and a final double bar line.

60. Sarabanda

Musical score for Sarabanda, Tenor part. The score consists of four staves of music in G major (one sharp) and 3/2 time. The first staff begins with a treble clef and a 3/2 time signature. The music features a series of quarter and half notes. The second staff ends with a repeat sign and a double bar line. The third staff begins with a repeat sign and a double bar line. The fourth staff ends with a repeat sign, a double bar line, and a final double bar line.