

Pieces en Trio

Pour les Flutes, Violon, & Dessus de Viole
Paris 1692

Marin Marais
1656 – 1728

Published by Johan Tufvesson.

Non-commercial copying welcome

Revision : 1.10

2me Dessus

Suite III

Marin Marais (1656-1728)

Prelude

2

6

10

14

17

21

25

29

Sarab^{de} Grave

5

9

Musical notation for measure 9, starting with a repeat sign. The melody consists of quarter notes: G4, A4, B4, C5, D5, E5, F#5, G5, A5, B5, C6, B5, A5, G5, F#4, E4, D4, C4. There are plus signs above the notes G4, A4, and B5.

13

Musical notation for measure 13, starting with a repeat sign. The melody consists of quarter notes: G4, A4, B4, C5, D5, E5, F#5, G5, A5, B5, C6, B5, A5, G5, F#4, E4, D4, C4.

17

Musical notation for measure 17, starting with a repeat sign. The melody consists of quarter notes: G4, A4, B4, C5, D5, E5, F#5, G5, A5, B5, C6, B5, A5, G5, F#4, E4, D4, C4.

21

Musical notation for measure 21, starting with a repeat sign. The melody consists of quarter notes: G4, A4, B4, C5, D5, E5, F#5, G5, A5, B5, C6, B5, A5, G5, F#4, E4, D4, C4.

25

Musical notation for measure 25, starting with a repeat sign. The melody consists of quarter notes: G4, A4, B4, C5, D5, E5, F#5, G5, A5, B5, C6, B5, A5, G5, F#4, E4, D4, C4.

pte reprise

Fantaisie champêtre

Musical notation for the start of Fantaisie champêtre, in 3/4 time. The melody consists of quarter notes: G4, A4, B4, C5, D5, E5, F#5, G5, A5, B5, C6, B5, A5, G5, F#4, E4, D4, C4.

6

Musical notation for measure 6, starting with a repeat sign. The melody consists of quarter notes: G4, A4, B4, C5, D5, E5, F#5, G5, A5, B5, C6, B5, A5, G5, F#4, E4, D4, C4. There is a plus sign above the note B5.

11

Musical notation for measure 11, starting with a repeat sign. The melody consists of quarter notes: G4, A4, B4, C5, D5, E5, F#5, G5, A5, B5, C6, B5, A5, G5, F#4, E4, D4, C4. There are plus signs above the notes F#5, G5, and B5.

16

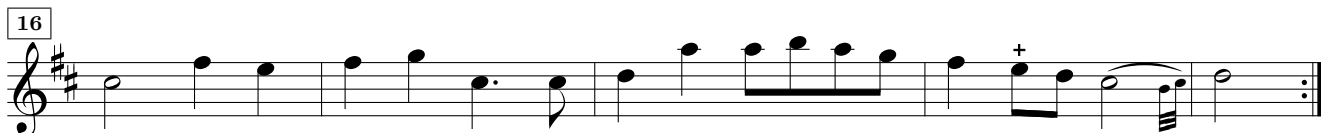
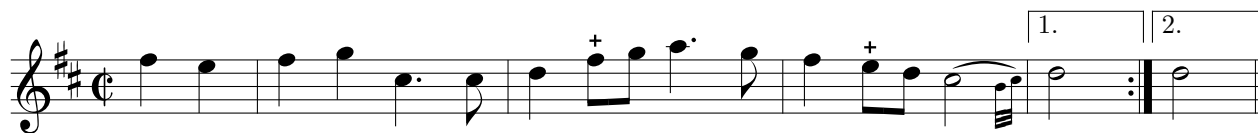
Musical notation for measure 16, starting with a repeat sign. The melody consists of quarter notes: G4, A4, B4, C5, D5, E5, F#5, G5, A5, B5, C6, B5, A5, G5, F#4, E4, D4, C4.

21

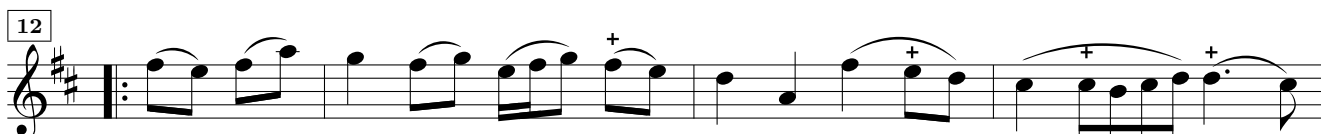
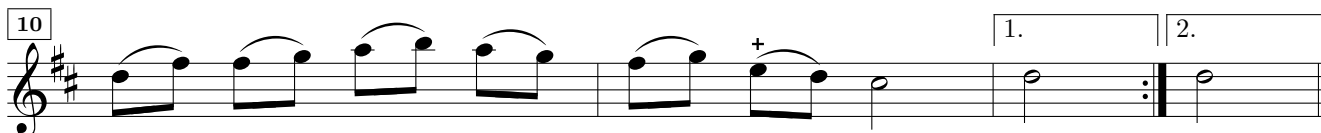
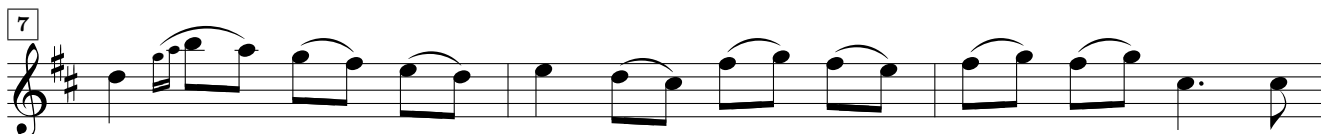
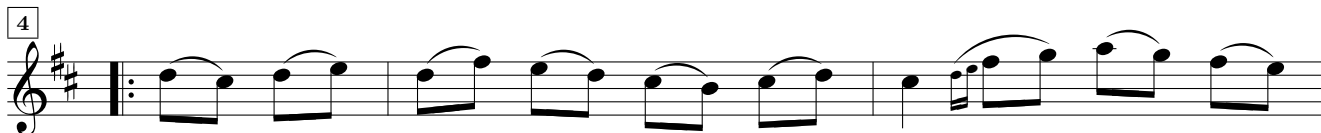
Musical notation for measure 21, starting with a repeat sign. The melody consists of quarter notes: G4, A4, B4, C5, D5, E5, F#5, G5, A5, B5, C6, B5, A5, G5, F#4, E4, D4, C4. There are plus signs above the notes G4, A4, and B5. The measure ends with a first ending (1.) and a second ending (2.).

Gavotte en rondeau

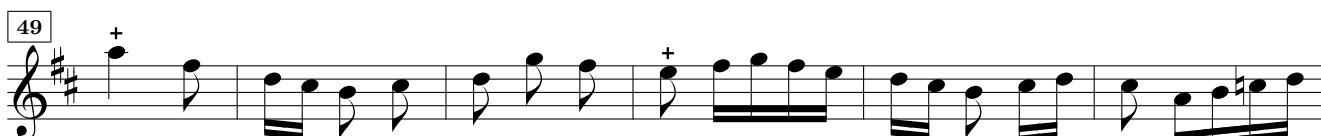
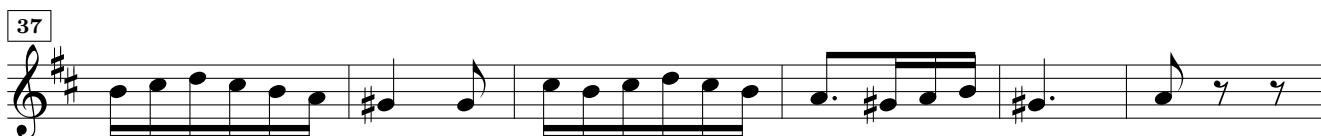
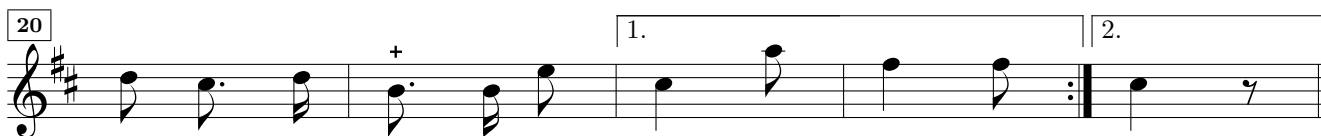
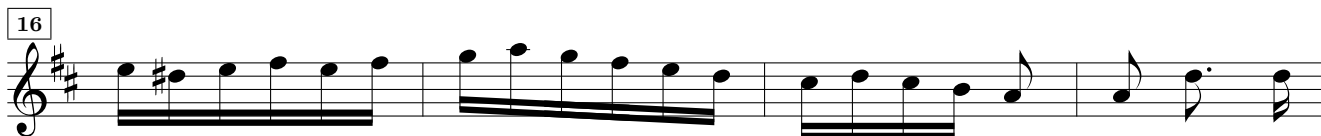
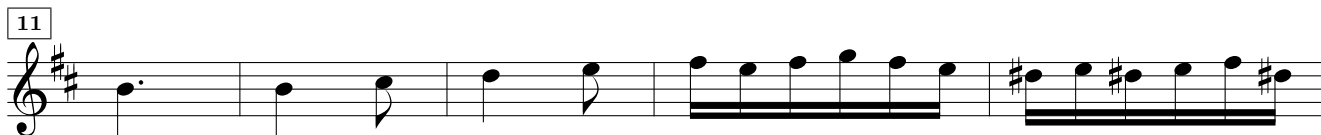
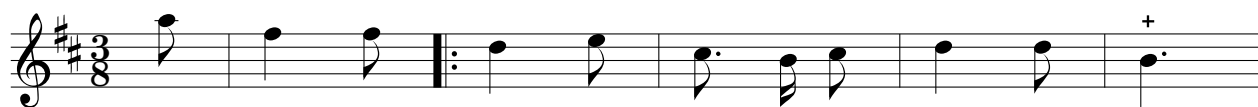
Pieces en trio — Suite III



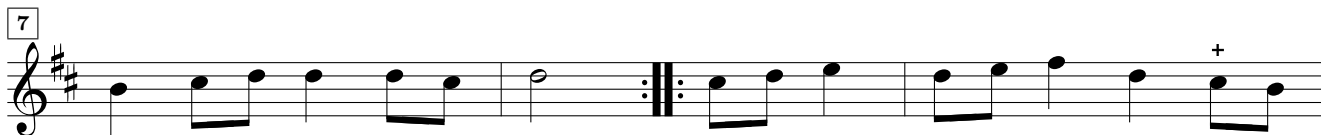
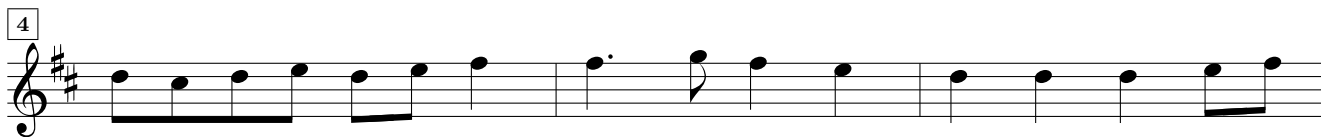
Double



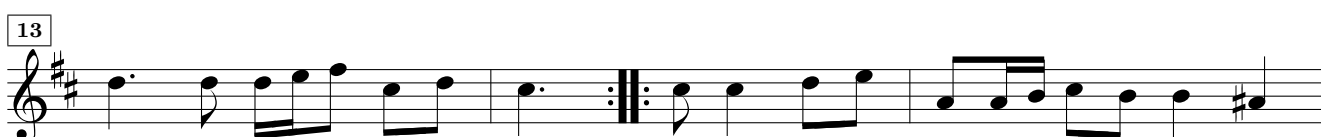
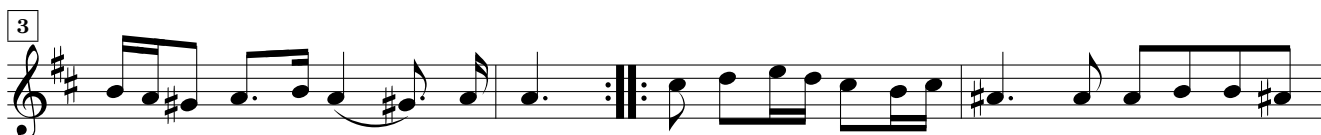
Gigue



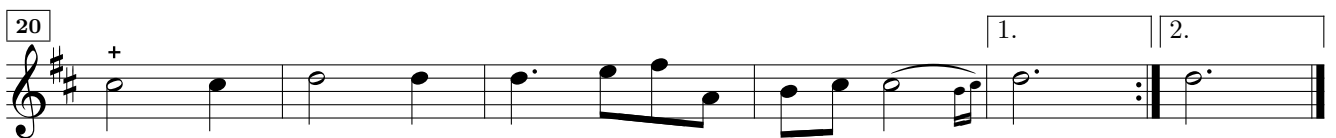
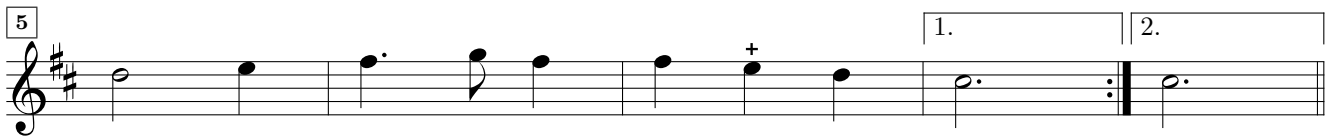
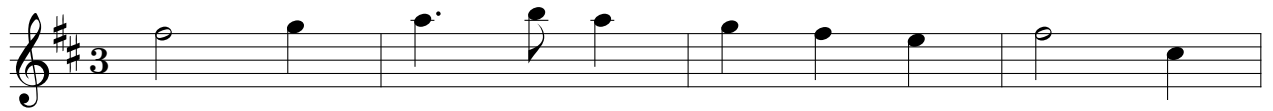
Bransle de village *Pieces en trio — Suite III*
 gay



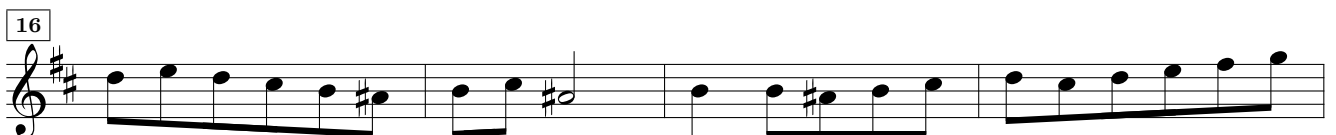
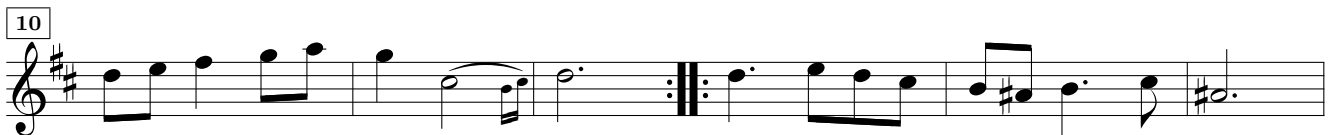
Rigaudon

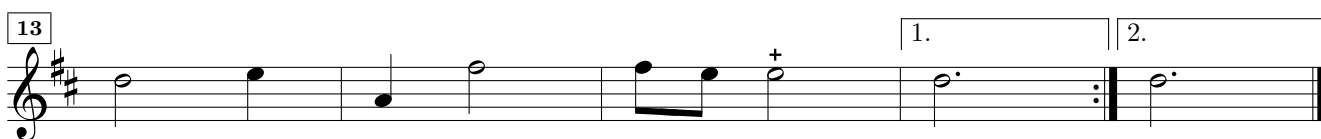
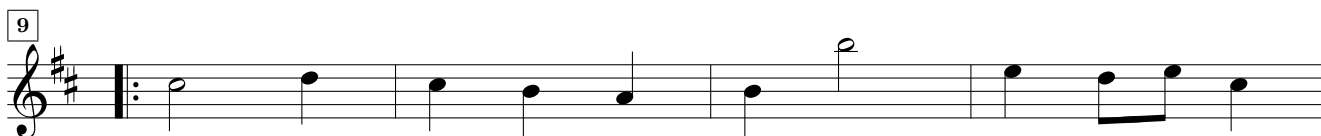
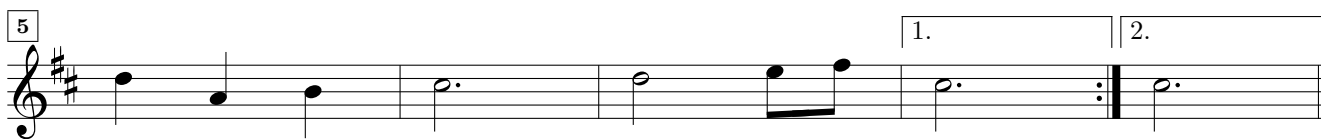
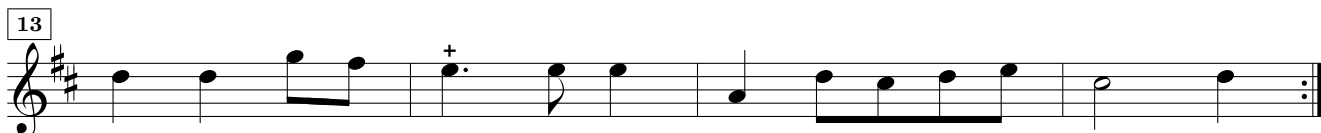
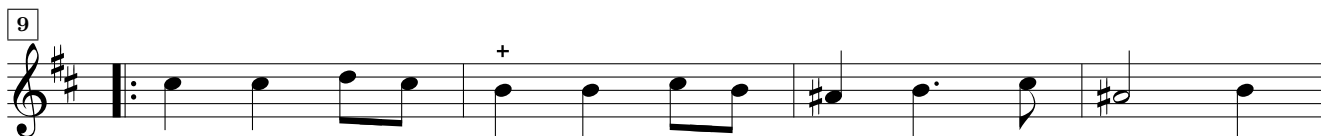


1^{er} Menuet



2^e Menuet



3^e Menuet*Pieces en trio — Suite III*4^e Menuet

Simphonie lentement



8

11

14

17

21

25

29

33

36

39

41