

PER OGNI SORTE D'STRUMENTO

Sonate da Chiesa e da Camera
A Due, Trè, & à quattro.

Opera XXII, Venetia 1655

Biagio Marini

1594 – 1663

Published by Johan Tufvesson.

Non-commercial copying welcome

Revision : 1.3

Name	Instr.	Page
Balletto Primo	2vl,b,bc	3
Balletto Secondo	2vl,(va),bc	4
Balletto Terzo	2vl,(va),bc	6
Balletto Quarto	2vl,(va),bc	6
Zarabanda Prima	2vl,va,bc	8
Zarabanda Seconda	2vl,va,bc	8
Zarabanda Terza	2vl,va,bc	9
Zarabanda Quarta	2vl,va,bc	9
Corrente Prima	2vl,va,bc	10
Corrente Seconda	2vl,va,bc	10
Corrente Terza	2vl,va,bc	11
Corrente Quarta	2vl,va,bc	11
Sinfonia Primo Tuono	2vl,va,bc	12
Sinfonia Secondo Tuono	2vl,va,bc	12
Sinfonia Terzo Tuono	2vl,va,bc	12
Sinfonia Quarto Tuono	2vl,va,bc	13
Sinfonia Quinto Tuono	2vl,va,bc	13
Sinfonia Sesto Tuono	2vl,va,bc	13
Sonata per due Violini ò Cornetti	2vl,bc	14
Sonata à Basso è Violino ò Cornetto ..	vl/c,b,bc	16
Sonata Sopra fuggi dolente	2vl,b,bc	18
Sonata Seconda	2vl,b,bc	20
Sonata Terza	3vl,bc	22
Sonata à 4	2vl,va/tb,b,bc	23
Passacalio	2vl,(va),bc	24

Balletto Primo à 3

Biagio Marini (1594–1663)

Prima parte

1 B E B G A E D
 4 G A B Z G H O I I C E B G
 8 O I C E B G A. A B E B G A B

Sec. parte

13 B E B G A E D G A B
 17 Z G H O I I C E B G O I C E
 21 B G A. A B E B G A B

Terza parte

25 B E B G A E D G A B
 29 Z G H O I I C E B G O I C E
 33 B G A. A B E B G A B

Quarta parte come stà

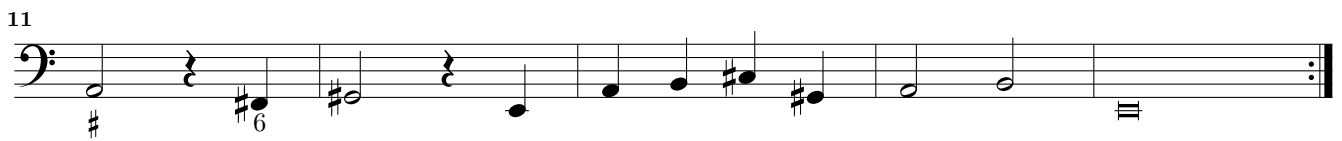
37 B E B G A E D G A B
 41 Z G H O I I C E B G O I C E
 45 B G A. A B E B G A B

Quinta parte Corrente Presto

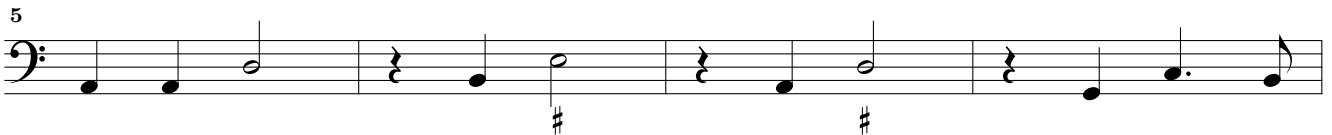
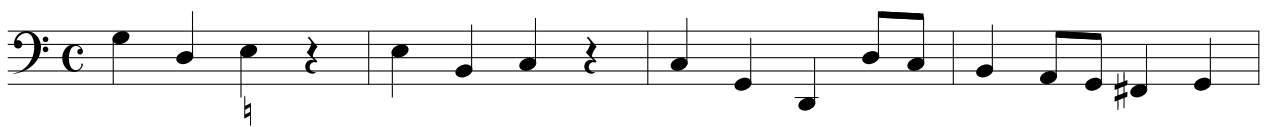
49 B A B G A B G O I G
 56 O I E B G A B 6 6 G # A b4 B 6
 6

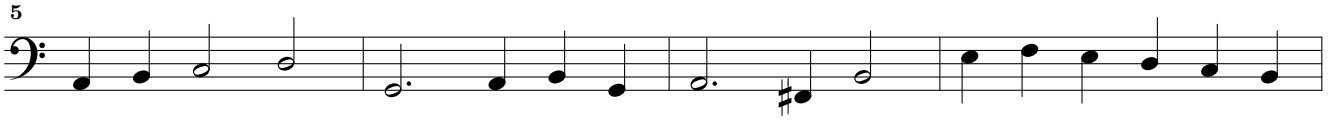
Balletto Secondo à 3. & à 4.

Entrata grave

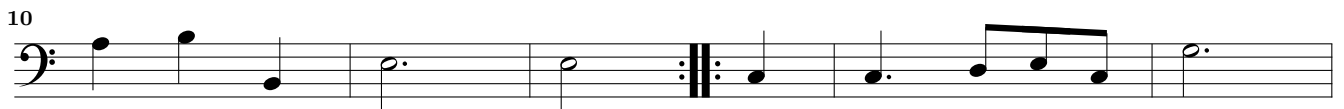


Balletto allegro

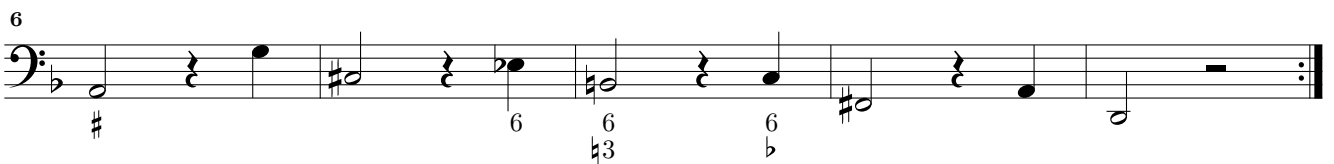
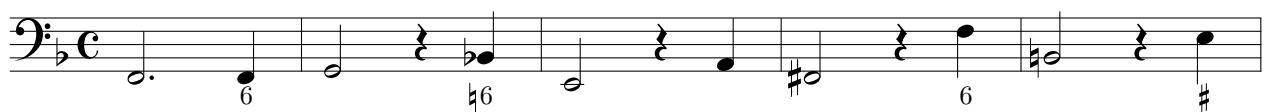




Corrente



Pretirata



Balletto Terzo à 3. & à 4.

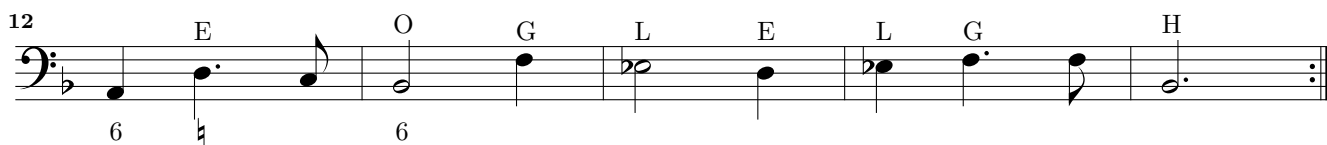
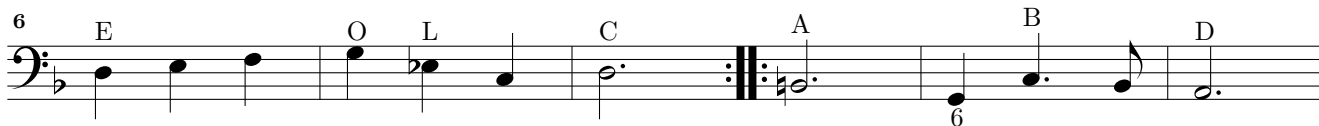
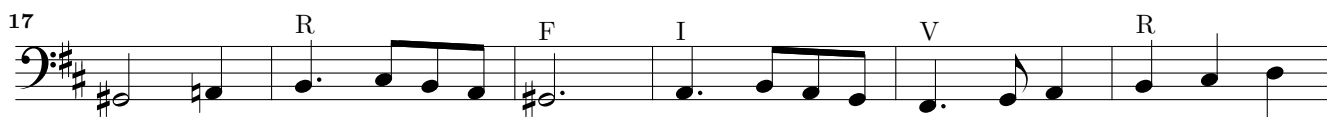
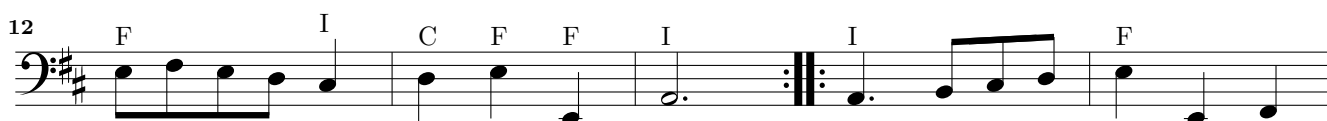
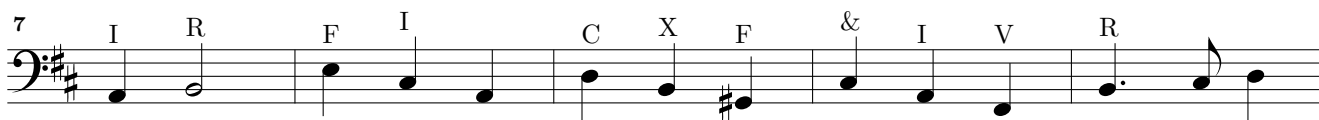
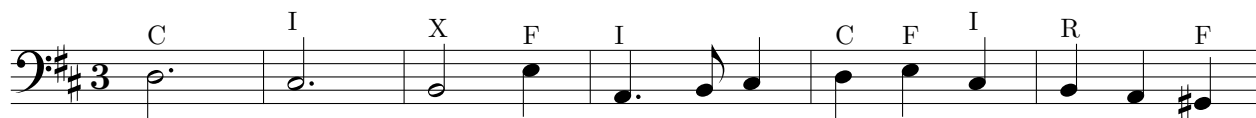
Musical score for Balletto Terzo à 3. & à 4. in bass clef, common time. The score consists of four staves of music with various notes and rests. Above the notes are letters A, B, C, G, A, B, C, F, I, G, O, I, C, A, B, I, C, I, I, C, F, F, I, C, A, B, A, D, A, D, A, B, C, A.

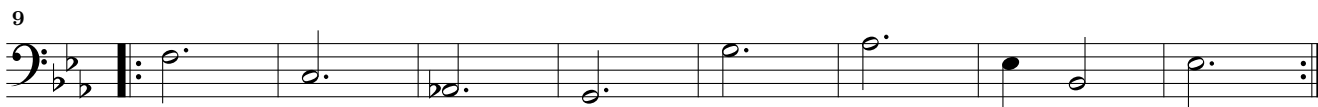
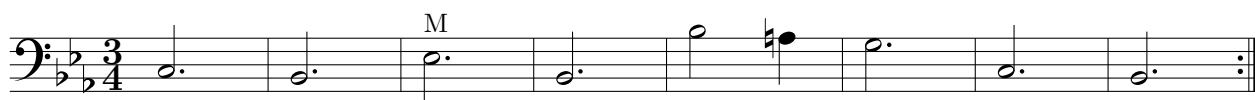
Balletto Quarto. à 3 & à 4

Allemano

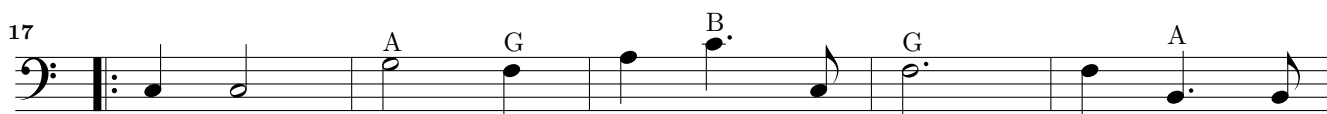
Musical score for Balletto Quarto. à 3 & à 4. in bass clef, common time. The score consists of three staves of music with various notes and rests. Above the notes are letters B, G, B, E, B, A, B, A, B, B, C, A, C, A, C, A, C, A, C, A, B, A, B.

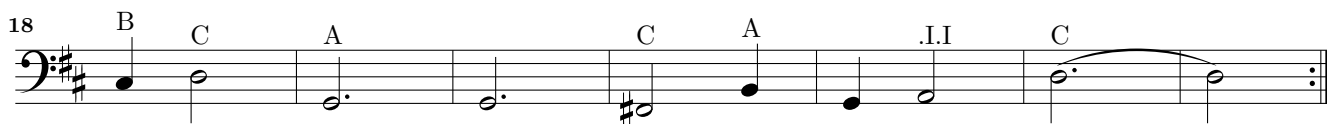
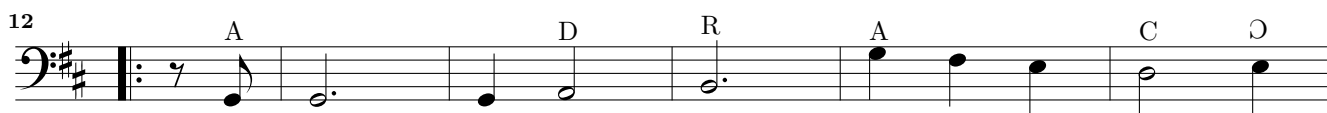
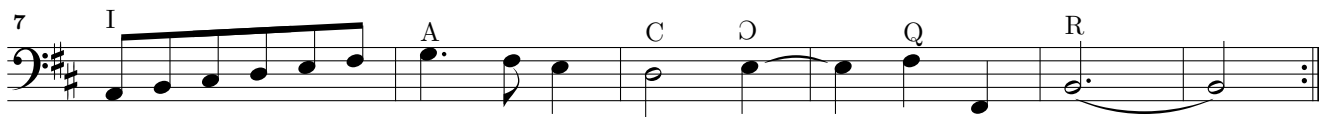
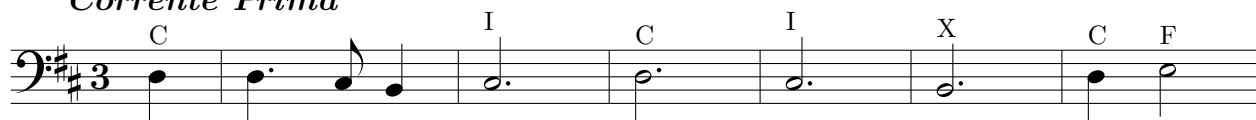
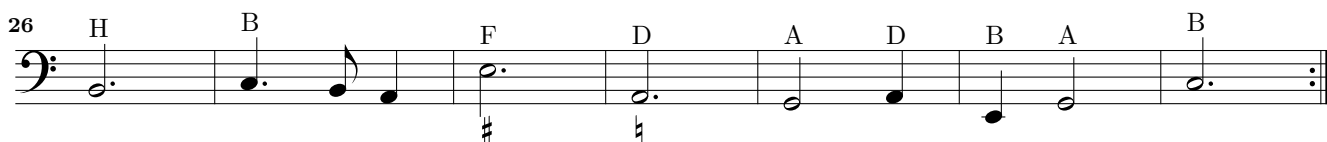
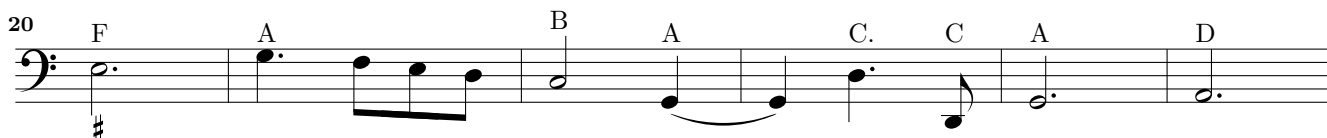
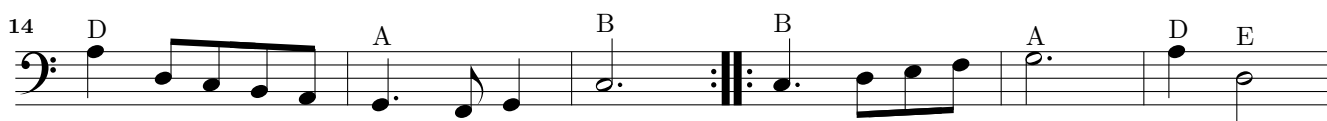
This page intentionally left blank.

Zarabanda Prima*Zarabanda Seconda*



Zarabanda Quarta



Corrente Prima*Corrente Seconda*

5 E B G O D

6 G B G E B

12 A D B E F I

16 F I C A B G

23 E H.B. B G C I C A

30 B D O .I.I D

Corrente Quarta

1 O L C A E

6 B G M H M

11 H O

17 G O C A G I C A

22 M C O C.C A.

Sinfonia *Primo Tuono*

Musical notation for Sinfonia *Primo Tuono*, measures 1-12. The score is in bass clef with a 3/4 time signature. It features various notes and rests, with dynamic markings like *ff.* and *ff.*. Fingerings are indicated by numbers 1-5. A double bar line with repeat dots is present at measure 7. Measure numbers 7, 13, and 13 are indicated at the start of their respective lines.

Sinfonia *Secondo Tuono*

Musical notation for Sinfonia *Secondo Tuono*, measures 1-11. The score is in bass clef with a common time signature. It features various notes and rests, with dynamic markings like *ff.* and *ff.*. Fingerings are indicated by numbers 1-5. A double bar line with repeat dots is present at measure 7. Measure numbers 7, 12, and 12 are indicated at the start of their respective lines.

Sinfonia *Terzo Tuono*

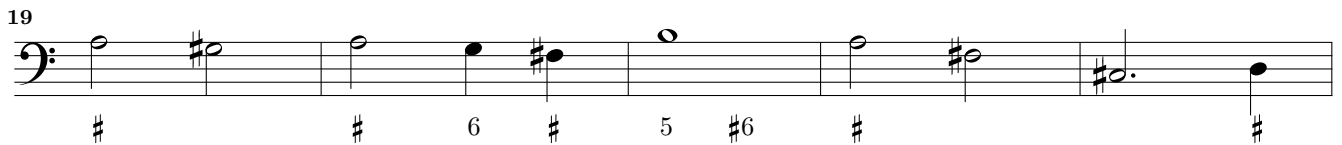
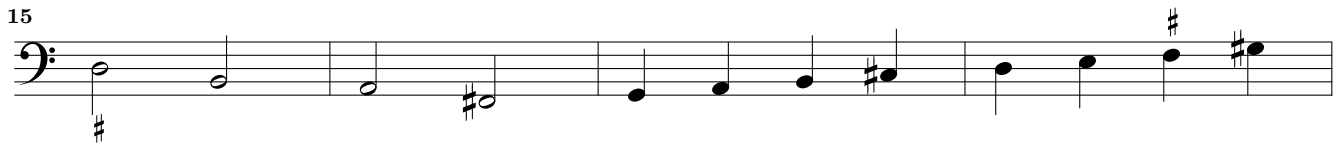
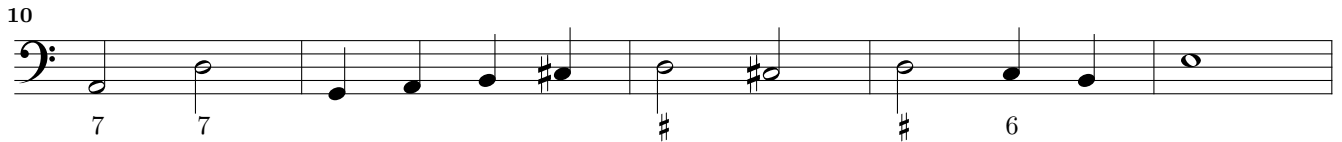
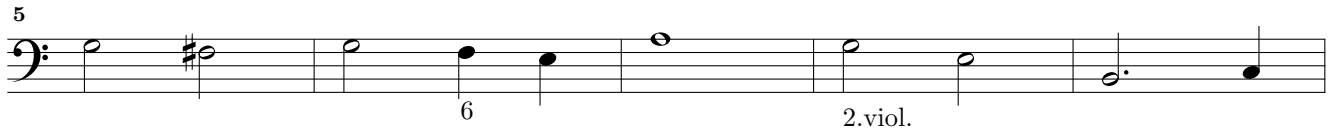
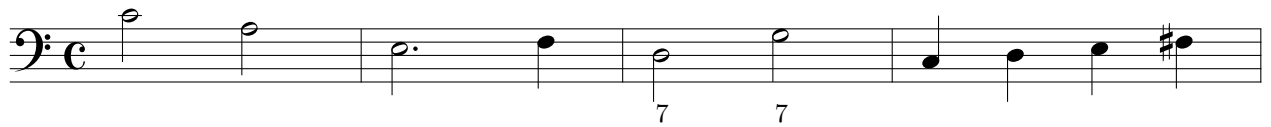
Musical notation for Sinfonia *Terzo Tuono*, measures 1-15. The score is in bass clef with a 3/4 time signature. It features various notes and rests, with dynamic markings like *ff.* and *ff.*. Fingerings are indicated by numbers 1-5. A double bar line with repeat dots is present at measure 9. Measure numbers 9, 16, and 16 are indicated at the start of their respective lines.

Sinfonia *Quinto Tuono*

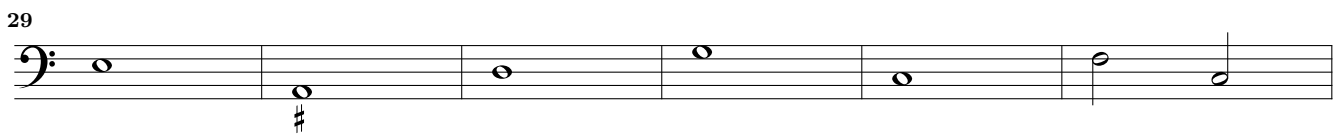
Sinfonia *Sesto Tuono*

Sonata per due Violini ò Cornetti

Dolcemente



Allegro



50

55

58

61

64

67

71

74

Dolcemente

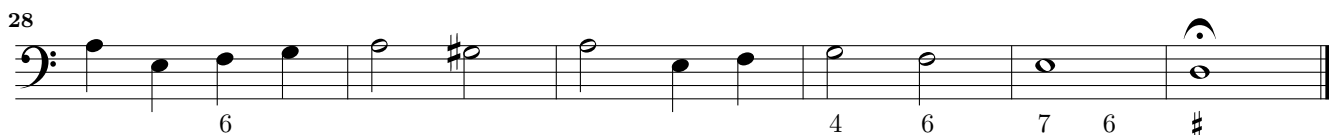
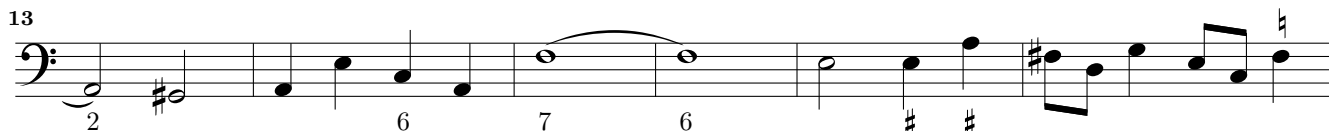
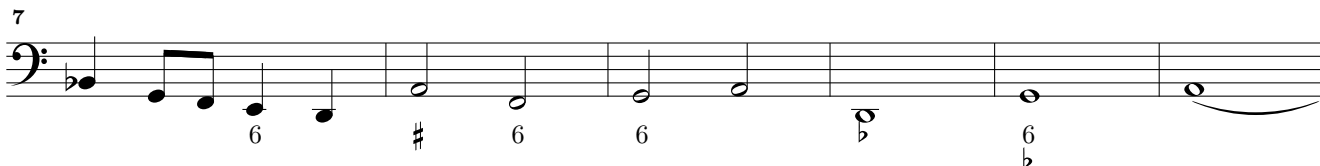
78

Allegro

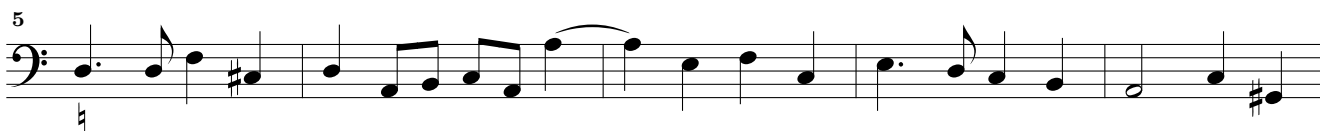
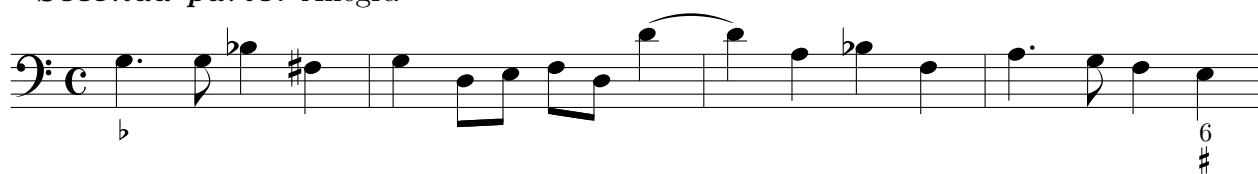
84

Sonata à Basso è Violino ò Cornetto

Prima Parte



Seconda parte. Allegra



19

Basso solo

Viol. solo

27

33

5 6

Terza Parte

4

8

12

6

17

6

4 3

22

6 #

26

Sonata Sopra fuggi dolente

Grave

6 6 $b6$ 6 6 5

Allegro

6 b

2

6

6

6

44

48

51

55

58

63

68

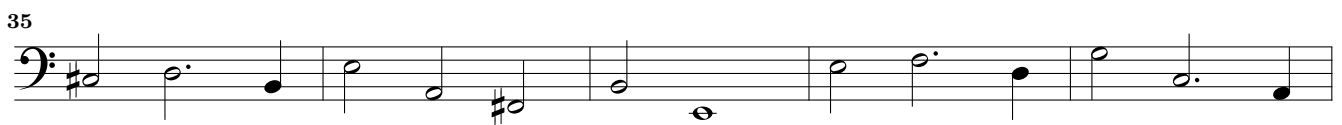
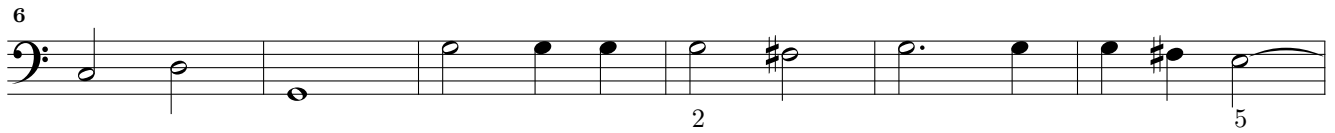
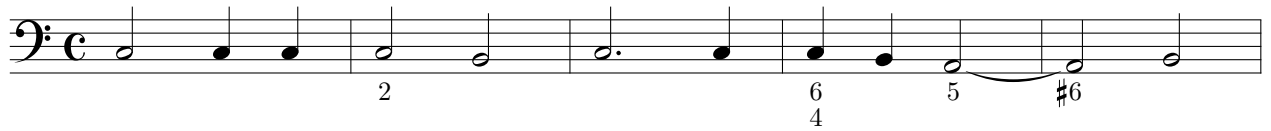
73

78

82

Sonata Seconda à 3

Prima parte grave



2. Parte

Allegro

55

59

62

66

70

73

Detailed description: This section contains the musical notation for the second part of the sonata, measures 55 through 78. It is written in bass clef with a common time signature (C). The notation includes various rhythmic values such as quarter, eighth, and sixteenth notes, as well as rests and accidentals. Fingerings are indicated by numbers 4, 6, and 7. The piece concludes at measure 78 with a double bar line and a common time signature.

Terza Parte

79

83

88

92

Detailed description: This section contains the musical notation for the third part of the sonata, measures 79 through 95. It is written in bass clef with a common time signature (C). The notation includes various rhythmic values and accidentals. Fingerings are indicated by numbers 6, 7, and 8. The piece concludes at measure 95 with a double bar line.

Sonata Terza. Per 3 violini

4
9
14

Seconda parte

20
25

Terza parte

32
37
41
46
50
55
59
63

Presto

Sonata à 4

B. solo

viol.

8

15

22

Allegro tutti

29

35

40

47

52

57

62

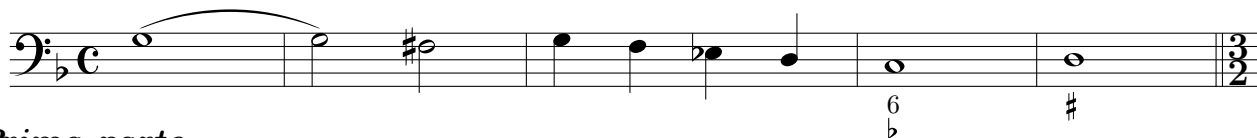
66

71

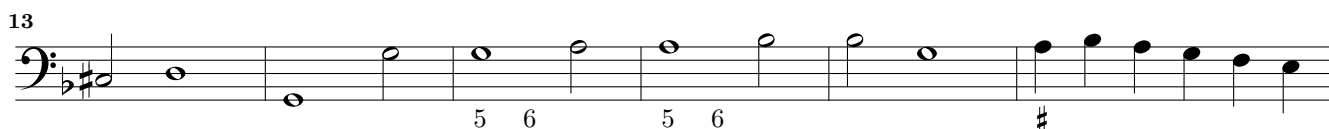
78

Passacalio à 3. & à 4.

Introdutione



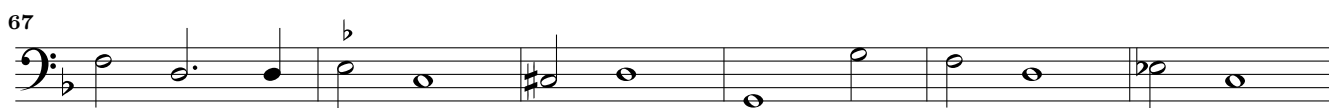
Prima parte



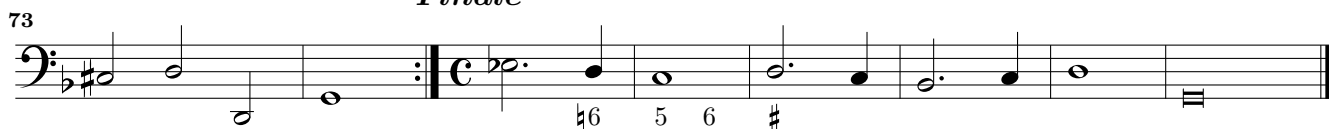
Seconda parte



Terza parte



Finale



This page intentionally left blank.