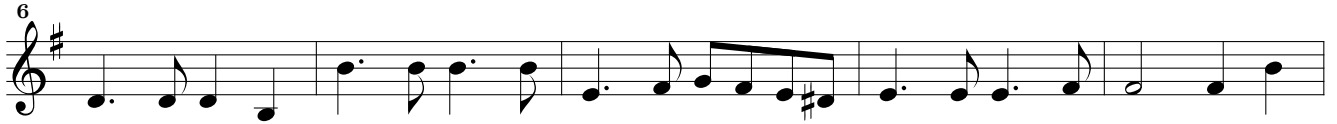


(Haute Contre)

Ouverture V

Johann Caspar Ferdinand Fischer
(1656–1746)

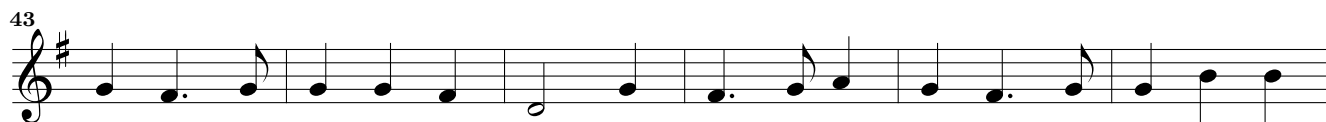
Entrée

Fischer – Le journal de printemps – Overture V – (Haute Contre)

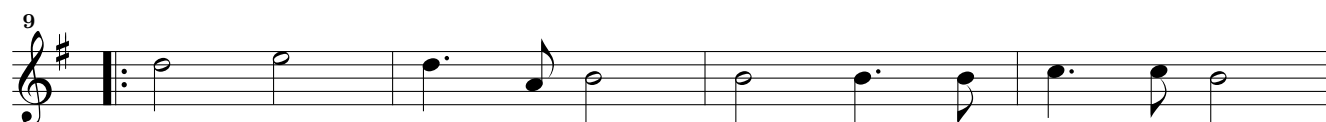
Musical score for 'Entrée' in G major, 2/4 time. The score consists of seven staves of music. The first staff starts with a treble clef, a key signature of one sharp (F#), and a 2/4 time signature. The music features a series of eighth and quarter notes, with some rests and a repeat sign at the end of the fourth staff. The piece concludes with a final cadence on the seventh staff.

Chaconne

Musical score for 'Chaconne' in G major, 3/4 time. The score consists of seven staves of music. The first staff starts with a treble clef, a key signature of one sharp (F#), and a 3/4 time signature. The music features a series of quarter and eighth notes, with some rests and a repeat sign at the beginning. The piece concludes with a final cadence on the seventh staff, marked with 'Fin' above the final note.



Traquenard



Menuet

